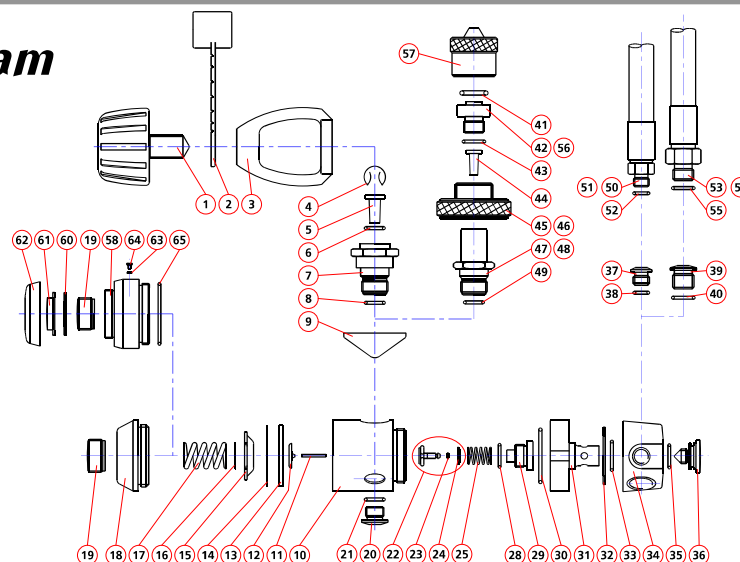


## Exploded diagram



### Parts list

Part	Reference	Description	Part	Reference	Description
1	7035	YOKE SCREW	35	7004	'O' RING (12.42x1.78) 70Sh
2	7100	DUST CAP	36	7928	TURRET RETAINING SCREW
3	7037	YOKE	37	7045	LP SCREW 3/8"
4	7041	FILTER CIRCLIP	38	7046	'O' RING (6.75x1.78) 70Sh
5	7077	YOKE CONE FILTER	39	7931	LP SCREW 1/2"
6	7025	'O' RING (9.25x1.78) 90Sh	40	7044	'O' RING (10.82x1.78) 70Sh
7	7145	YOKE RETAINER	41	7076	'O' RING (11.92x2.62) 90Sh
8	7025	'O' RING (9.25x1.78) 90Sh	42	6700	3000 PSI DIN SEAT
9	7934	SADDLE	43	7930	'O' RING (10.82x1.78) 90Sh
10	7910	MAIN BODY	44	6701	DIN CONE FILTER
11	7114	V10 THRUST PIN	45	6702	3000 PSI DIN WHEEL
12	7113	PRESSURE TRANSFER PAD	46	6703	4300 PSI DIN WHEEL
13	7916	LP DIAPHRAGM	47	6708	3000 PSI DIN CONNECTOR
14	7915	WASHER	48	6709	4300 PSI DIN CONNECTOR
15	7914	EXTERIOR CUP WASHER	49	7025	'O' RING (9.25x1.78) 90Sh
16	7918	FRICTION WASHER	50	16778	LP HOSE 3/8"
17	7913	LP SPRING	51	7202	HOSE PROTECTOR
18	7911	DIAPHRAGM COVER	52	7046	'O' RING (6.75x1.78) 70Sh
19	7912	LP REGULATING SCREW	53	16878	LP HOSE 1/2"
20	7068	HP PLUG 7/16"	54	7202	HOSE PROTECTOR
21	7025	'O' RING (9.25x1.78) 90Sh	55	7044	'O' RING (10.82x1.78) 70Sh
22	7061	HP VALVE ASSEMBLY (valve + rep 23 + rep 24)	56	6600	4300 PSI DIN SEAT
23	7907	'O' RING (1.5x1) 80Sh	57	9251	DIN DUST CAP
24	7965	WASHER	58	7938	ANTI-FREEZE CAP
25	7921	SPRING	60	7941	ANTI-FREEZE DIAPHRAGM
28	7923	'O' RING (12.1x1.6) 70Sh	61	7940	SHIELD
29	7917	VALVE GUIDE	62	7939	RETAINING RING
30	7933	'O' RING (30x2) 70Sh	63	7943	'O' RING (2.75x1.6) 70Sh
31	7926	TURRET SWIVEL	64	7944	SCREW
32	7932	FRICTION RING	65	7947	'O' RING (33x1.5) 70Sh
33	7936	'O' RING (15.6x1.78) 70Sh			
34	7927	TURRET			

'O' rings

Exploded diagram

Dis-assembly

Assembly

Technical information

Maintenance kit

Repair