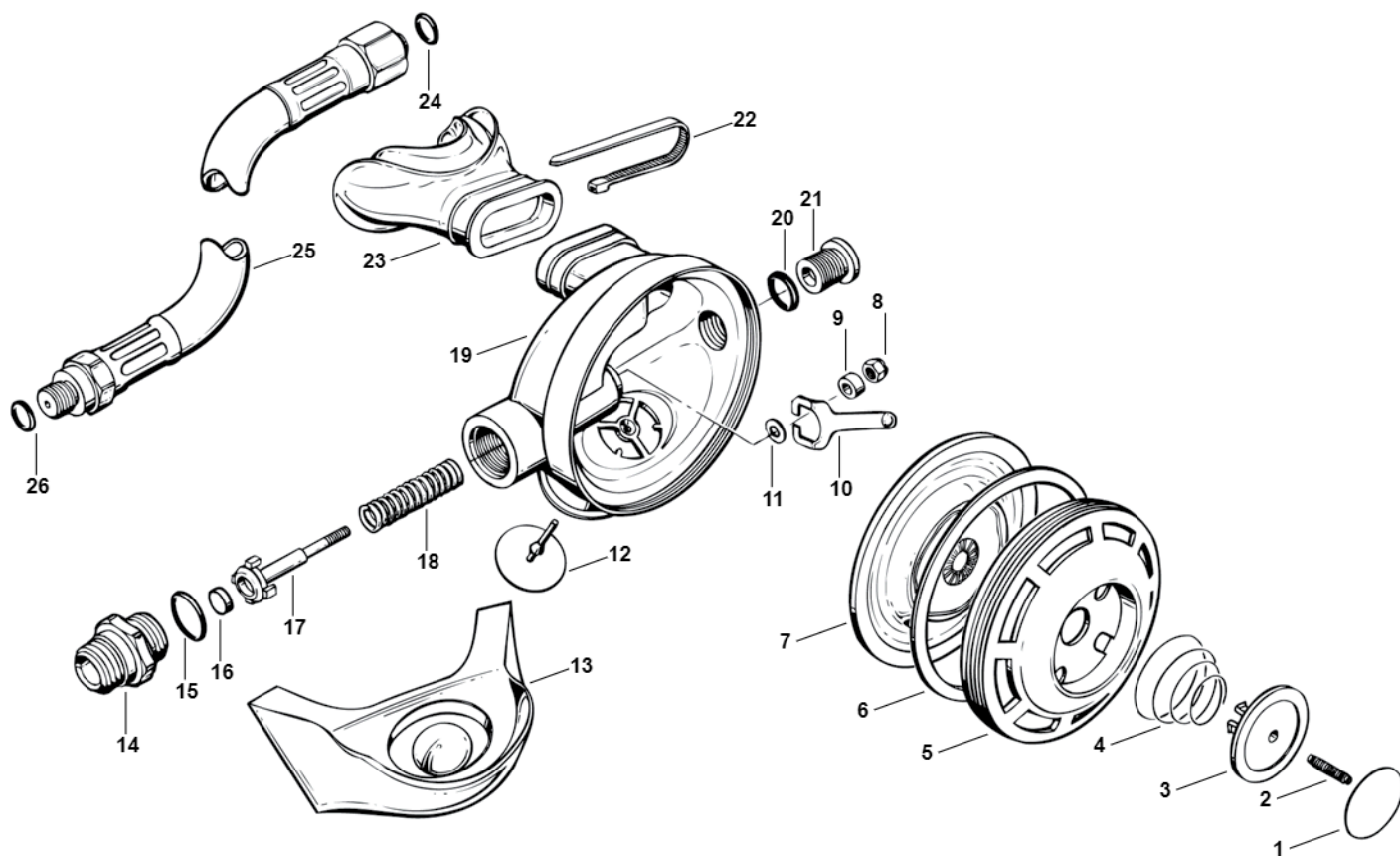


Conshelf 21/SE2/SEA • Pro Diver • Octopus



Key #	Part #	Description
-----	900013	Overhaul Parts Kit
1 ----	107485	Purge Button Decal, SE2
-----	106485	Purge Button Decal, Conshelf 21
-----	106188	Purge Button Decal, Octopus
2 ----	101623	Adjustment Screw (1983-1987 models)
3 ----	101445	Purge Button
4 ----	101436	Purge Spring
5 ----	107432	Box Top, Black
-----	102139	Box Top, Neon Yellow
6 ----	821032	Thrust Washer
7 ----	100571	Demand Diaphragm
-----	103732	Demand Diaphragm (Military Only)
8 ----	102510	Locknut
9 ----	102517	Spacer
9 ----	107606	Spacer (Cold Water)
10 ----	108513	Lever
-----	107605	Lever (Cold Water)
11 ----	845022	Washer
-----	107607	Washer (Cold Water)
12 ----	105139	Exhaust Valve
13 ----	101919	Exhaust Tee
14 ----	100444	Inlet Fitting

Key #	Part #	Description
15 ----	820014	O-ring
16 ----	108510	LP Seat
17 ----	104903	Poppet
18 ----	108515	Spring, Standard
-----	108514	Spring, Octopus
19 ----	107445	Box Bottom, Black
-----	107447	Box Bottom, Neon Yellow
20 ----	957025	O-ring
21 ----	101924	Port Plug
22 ----	104940	Clamp, Clear
-----	104913	Clamp, Octopus
23 ----	105884	Comfo Bite Mouthpiece, Clear, Standard
-----	105885	Comfo Bite Mouthpiece, Black, Standard
-----	105889	Standard Mouthpiece, Clear
-----	105879	Standard Mouthpiece, Black
24 ----	820010	O-ring
25 ----	090015	Hose Assy, 3/8" x 30"
-----	APF124565	Hose Assy, 1/2" x 30", w/Protector
-----	APF124566	Hose Assy, Octo, 3/8" x 39", w/Protector, Yellow
26 ----	957025	O-ring (SE2/SEA/Pro Diver)
-----	820011	O-ring (Con 21/Octopus)
n/s ----	102165	Box Bottom Kit, SE2/Conshelf 21, N. Yellow (includes matching NY box top)

Part numbers in **BOLD ITALICS** indicate standard overhaul replacement part.