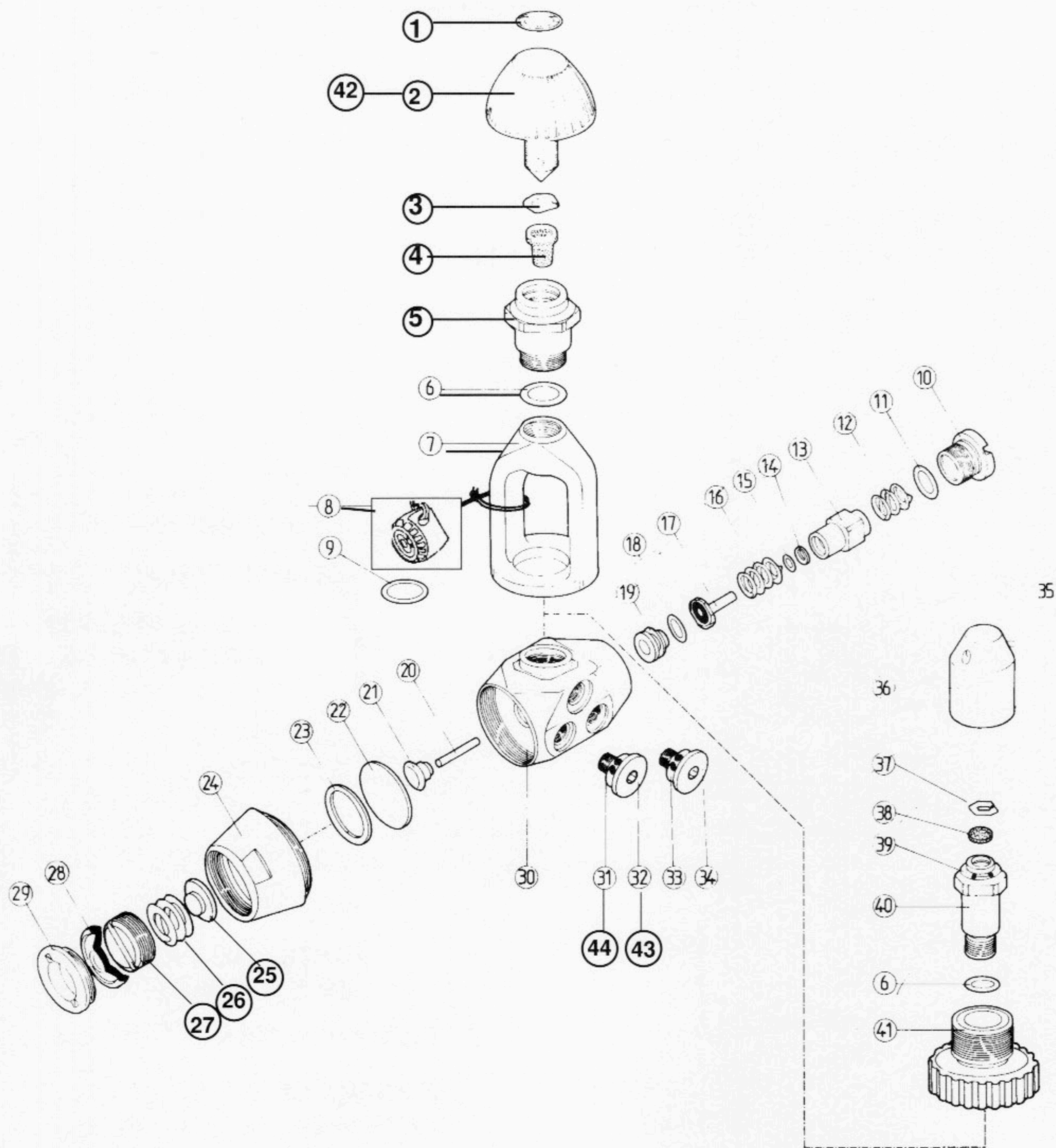


PREMIER ETAGE SUPRA ARCTIC 1991 / SUPRA ARCTIC 1991 FIRST STAGE



**PREMIER ETAGE SUPRA ARCTIC 1991
SUPRA ARCTIC 1991 FIRST STAGE**

VERSION 17,8 : 122605
VERSION DIN : 122705



24 05 91

**DETENDEUR SUPRA ARCTIC 1991
SUPRA ARCTIC REGULATOR 1991**

VERSION 17,8 : 122350
VERSION DIN : 122755

NOMENCLATURE DU PREMIER ETAGE SUPRA ARCTIC 1991
SUPRA ARCTIC 1991 FIRST STAGE PARTS LIST
VERSION 17,8 : 122605 - VERSION DIN : 122705

REP . N°	REF . N°	DESIGNATION	DESCRIPTION
1	120640	Sticker SUPRA ARCTIC	Sticker
2	120145	Vis d'étrier	Yoke screw
3	116124	Cerclam	Circlip
4	121129	Filtre conique	Conical filter
5	122207	Siège SUPRA 2 17,8	Seat SUPRA 2 17,8
"	122211	Siège SUPRA 2 18,5	Seat SUPRA 2 18,5
6	850219	Bague	O-ring
7	120142	Etrier 5/8 (234 bars)	5/8 yoke (3400 PSI)
8	122218	Bouchon complet	Dust cap complet
9	228157	Bague	O-ring
10	122234	Bouchon SUPRA	Cap
11	213714	Bague	O-ring
12	122243	Ressort	Spring
13	122227	Barillet SUPRA	Spring block
14	119129	Bague anti-extrusion	Anti-extrusion washer
15	119135	Bague	O-ring
16	122244	Ressort clapet SUPRA	Spring valve
17	122230	Clapet	Valve
18	840163	Bague	O-ring
19	122224	Siège HP SUPRA	HP Seat
20	122225	Aiguille SUPRA	Pin
21	122236	Support d'aiguille	Pin support
22	119159	Membrane	Diaphragm
23	119143	Rondelle	Washer
24	122242	Ecrou d'étanchéité S	Body screw S
25	119155	Embase	Spring pad
26	119156	Ressort	Spring
27	122219	Ecrou de réglage	Adjusting screw
28	122245	Membrane	Diaphragm
29	122248	Ecrou de membrane	Screw
30	122203	Corps HP	HP body
31	116881	Bague	O-ring
32	122208	Vis MP 3/8"	MP screw blank
33	116174	Bague	O-ring
34	122209	Vis HP 7/16"	HP screw blank
35	690073	Cordonnet nylon noir	Cord black nylon
36	117217	Bouchon DIN	DIN plug
37	119320	Cerclam	Circlip
38	113166	Filtre	Filter
39	228157	Bague	O-ring
40	122316	Siège DIN	DIN seat
41	122331	Volant DIN 200 bars	Handwheel DIN 200 bars
42	120225	Vis d'étrier longue	Long yoke screw
43	122216	Vis MP 1/2"	LP 1/2" screw
44	120658	Bague	O-ring
			25 05 91