



SCUBAPRO



SEAWING SUPERNOVA

WINTER 2022

new

SCUBAPRO's Seawing Supernova represents the next generation of powerful SCUBAPRO fins. Winner of the prestigious, internationally-recognised Red Dot Award for product design, the **NEW** Seawing Supernova is a step up from the Seawing Nova in performance, construction, fit and versatility. The proven Pivot Control Technology (PCT) works in tandem with the unique Auto-Adjust central panel to always provide the optimal angle of attack for the blade. The PCT hinges pre-set the blade in the 40° to 50° range that is ideal for converting kicks into forward motion. The flexible Auto-Adjust central panel then fine-tunes the angle of attack according to the strength of kick by counter-pivoting, providing a milder angle of attack for comfort when kicking gently, a more aggressive angle of attack when kicking at full strength, and anything in between. When it comes to frog and alternate kicks, the **NEW** twin-tip winglets increase control and markedly improve maneuverability. The Seawing Supernova's innovative two-piece design, with blade and foot pocket molded separately, makes transport easy, and with the optional full foot pocket the fin can be modified to handle any warm-water dive scenario. The new Seawing Supernova is the essential high-performance fin for avid recreational and professional divers seeking maximum speed, power and control in all diving conditions.



PRICES	€
MSRP	219,00

PART NUMBER	SIZE
BLACK	
25.505.100	XS
25.505.200	S
25.505.300	M
25.505.400	L
25.505.500	XL
WHITE	
25.506.100	XS
25.506.200	S
25.506.300	M
25.506.400	L
25.506.500	XL

- Innovative blade shape produces more power, more speed and better maneuverability.
- Blade's central panel membrane auto-adjusts the angle of attack based on kicking strength, providing easier kicking when cruising and maximum power when needed.
- Central panel Hydra Loop channels water flow rearwards for increased efficiency and thrust.
- Pivot Control Technology ensures that the most efficient 40° to 50° range of angle of attack is maintained.
- Twin-tip winglets improve control and maneuverability for excellent frog and alternate kicks.
- Two-piece design makes transport easy and increases versatility to handle any dive scenario.
- Blade and foot pocket are molded separately with a durable Socket-Lock Connecting System that allows for easy assembly and disassembly.
- Key fob-style multi-purpose tool is included [25.550.001] for assembly and disassembly of the foot pocket and blade, along with a travel-friendly storage bag.
- Made of premium Monprene® for long-lasting durability.
- Sold as an open heel set with open heel foot pocket and blade pre-assembled.
- Open heel foot pocket features an upgraded heavy-duty bungee strap that allows for micro-adjustments to accommodate different boot types.
- Full foot pocket (sold separately) is available for warm-water conditions that don't require the wearing of a boot.
- Full foot pocket's re-profiled heel-retention cup prevents slipping and chafing.
- Extended grip pads on open heel foot pockets provide an improved non-skid grip on wet surfaces.
- Compatible with coloured Scuba Skegs - 25.328.x00 - see page 142

Size	XS	S	M	L	XL
Weight in kg	1,48	1,49	1,50	1,90	1,95
Length [cm]	55,80	57,00	57,70	63,60	65,10
Width [cm]	22,00	22,00	22,00	23,80	23,80
Height [cm]	9,40	9,90	10,40	11,00	12,00
Blade size	MIDI			MAXI	

WHAT'S IN THE BOX

- 1 Pair of Seawing Supernova fins
- MFS Multi Tool
- 2 sets of Lock Plates
- SCUBAPRO Boat Bag



reddot winner 2021



SEAWING

SUPERNOVA



SEAWING SUPERNOVA FULL FOOT POCKET

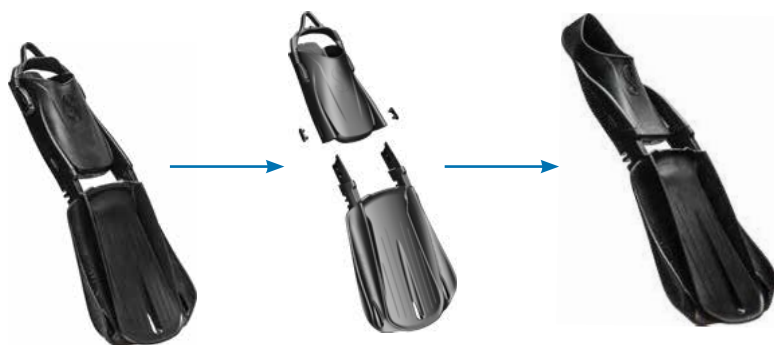


WINTER 2022

new


Want to take your new Seawing Supernova to the tropics for some warm-water diving? No problem.

SCUBAPRO's Seawing Supernova's innovative two-piece design, with blade and foot pocket molded separately, makes it possible to replace the standard open heel foot pocket with an optional full foot pocket for barefoot diving. Simply disassemble the fin's Socket-Lock Connecting System, switch out the open heel foot pocket with a full foot pocket, reassemble and you're ready to hit the water. The full foot pocket is made of premium Monprene and features a re-profiled heel-retention cup to prevent slipping and chafing.



WHAT'S IN THE BOX

- 1 pair of full foot pockets
- 1 set of Lock Plates

Switch footpockets for different environments
– Tropical / Temperate / Boat / Shore.

Two-piece design makes transport easy and increases versatility to handle any dive scenario.



PRICES		€
MSRP		49,00

PART NUMBER	SIZE
BLACK	
25.555.100	XS
25.555.200	S
25.555.300	M
25.555.400	L
25.555.500	XL
WHITE	
25.556.100	XS
25.556.200	S
25.556.300	M
25.556.400	L
25.556.500	XL

Size	XS	S	M	L	XL
Weight in kg	0,43	0,46	0,50	0,59	0,63
Length [cm]	25,40	26,40	27,50	28,80	30,00
Width [cm]	14,40	14,40	14,40	15,60	15,60
Height [cm]	7,50	7,80	8,10	8,50	9,00

SEAWING SUPERNOVA ACCESSORIES

new

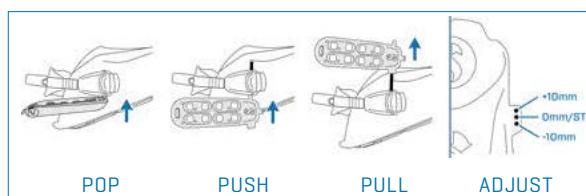
PART NUMBER	DESCRIPTION	MSRP
25.557.001	HEAVY DUTY BUNGEE STRAP SET [PAIR]	28,00
25.558.001	LOCK PLATE SET [2 X PAIRS]	8,00
25.550.001	MULTI-TOOL	11,00



25.550.001

25.558.001

Key fob-style multi-purpose tool is included for assembly and disassembly of the foot pocket and blade.

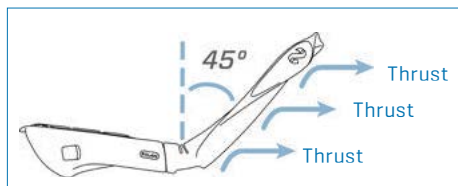


SEAWING SUPERNOVA - PREMIUM PLUS HIGH PERFORMANCE FIN

A NEW LEVEL OF PERFORMANCE:

- Outstanding Speed, Power & Acceleration.
- Outstanding Comfort.
- Excellent frog kick & manoeuvrability.
- Evolution of the successful SEAWING concept.

SEAWING SUPERNOVA



PIVOT CONTROL TECHNOLOGY:

- Comfortable & Efficient Hinged blade design.
- Made famous by the SEAWING NOVA.
- Aims to pre-set Angle of Attack (AOA) to 45°.
- Blade is effective at all kick strengths.



CLEAN WATER BLADE:

- Areas of blade with bad AOA are eliminated.
- Reduces drag and increases thrust.



AUTO-ADJUST-THRUST:

CENTRAL PANEL has a membrane around the sides and front: Allows it to react to water pressure and change angle independently of the rest of the fin.

COUNTER PIVOTS – Opposite to normal fin blades! Normal fins reduce AOA as you kick harder. SUPERNOVA increases AOA as you kick harder!

AUTO-ADJUSTS the AOA based on kick strength. Provides easier kicking when cruising. Maximum power when you need it.



HYDRA-LOOP REINFORCED CENTRAL PANEL:

- Improves lateral rigidity for vastly improved alternate kicks.
- Creates a hydrofoil profile for better thrust.
- Channels water flow rearwards for increased efficiency & thrust



TWIN-TIP WINGLETS

improve control and maneuverability for excellent frog and alternate kicks.

DISASSEMBLY

