



SERVICE MANUAL



FIRST STAGE LEGEND LEGEND LX LEGEND LUX

INDEX

COPYRIGHT.....	3
INTRODUCTION.....	3
WARNINGS, ATTENTION, NOTE.....	3
MAINTENANCE.....	3
GENERAL INSTRUCTIONS.....	4
GENERAL CONVENTIONS.....	4
DISASSEMBLY PROCEDURE.....	5
REASSEMBLY PROCEDURE.....	10
ADJUSTING THE FIRST STAGE	15
FINAL ASSEMBLY.....	17
Table 1. Troubleshooting guide.....	18
Table 2. List of tools and service kits	19
Table 3. Recommended cleaners and lubricants.....	20
Procedure A. Cleaning and lubricating.....	21
Table 4. Torque settings.....	22
Table 5. Checking specifications.....	22
Exploded view of Legend First Stage.....	24

Revision	Description
12/2011	Update of all the exploded views

COPYRIGHT

This manual is the property of Aqualung France. Any copying, photocopying, reproduction, translation, electronic distribution (email, Internet...), even partial, and in whatever format, is expressly forbidden without the written consent of Aqualung France.

©2011 Aqua Lung France.

INTRODUCTION

This manual gives the instructions and the recommendations for the disassembly, the cleaning, the checking, the reassembly and the adjustment of an Aqualung regulator.

This manual is not an instruction manual for unqualified personnel. The procedures described in this manual are intended only for qualified personnel who have been trained in the servicing of Aqualung equipment during a specialised course.

If you do not understand certain procedures in this manual you should contact an Aqualung service consultant before undertaking any operation.

WARNINGS, ATTENTION, NOTES

Certain icons have been used to facilitate the reading and understanding of this manual. They have the following meanings :



ATTENTION: Indicates a situation or action that could cause serious damage to the product, making it dangerous if the advice given is not followed correctly.



WARNING: Indicates situations that could result in serious or fatal accidents if the advice given is not followed correctly.



NOTE : Notes are used to emphasize important points as well as information which needs to be remembered.

MAINTENANCE



Attention: Whatever the number of dives carried out during a year, the regulator should receive a complete service each year. If the regulator is used in a chlorinated or aggressive environment the service period should be reduced to six months.

In order to conform with the Aqualung Regulator Lifetime Guarantee, all servicing (inspection, servicing and repairs) should be recorded in the Service Record incorporated in the regulator User Manual.

GENERAL INSTRUCTIONS

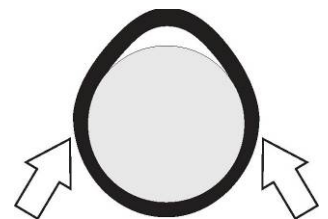
1. In order to carry out the procedures described in this manual correctly it is important that you follow the steps in the exact order indicated. Read the manual through completely so that you become familiar with all the procedures, the special tools and the replacement parts, before starting to disassemble the product. Keep this manual open near to you so that you can refer to it step by step. Do not rely on your memory..
2. All servicing and repair procedures should be carried out in a workshop that is clean, well lit, easy to access and specially fitted for the purpose.
3. The regulator body should never be directly held in the jaws of a vice. To hold the body, screw the tool 006230 into the HP port and then grip the tool with the vice.
4. Once the regulator has been disassembled, the re-usable components should be separated from the components that need to be replaced. Fragile items with seats or crowns with critical sealing surfaces should be separated and protected during servicing in order to prevent any damage.
5. Use only spare parts from Aqualung service kits. Never replace an Aqualung part with one from another manufacturer, even if it appears similar.
6. Never re-use regulator parts which should be replaced on the pretext that the regulator has seen little use since its manufacture or since its last service.
7. When reassembling, check that the torque used conforms with that shown in Table 4, Torque. Some parts can be irretrievably damaged if the acceptable torque is exceeded.

GENERAL CONVENTIONS

The conventions described below define the actions to be carried out when an instruction is given.

1. **Unscrew:** to unscrew a threaded part, turn it anti-clockwise.
2. **Screw:** to screw a threaded part, turn it clockwise.
3. **Remove the O-ring:** To remove an O-ring follow the method below, using the special tool provided for this purpose. Any tool that could damage the O-ring should be avoided. In every case, replace the O-ring removed with a new one.

*Press simultaneously on the two sides of the O-ring in order to form an 'eye'.
Insert the special tool into this eye to remove the O-ring.*



4. The acronyms used:
LP: Low Pressure
MP: Medium Pressure
HP: High Pressure
5. Numbers in brackets indicate the part number of the component shown on the exploded view attached.

DISASSEMBLY PROCEDURE



Note: Before commencing disassembly, consult the exploded view to check the reference numbers of all parts requiring replacement. These parts should all be replaced by new parts and should not be re-used on the pretext that the regulator has seen little use since its manufacture or since its last service.



Attention: Use only the special tool when removing O-rings in order to avoid damaging the seal recess. The slightest scratch on a sealing surface could cause a leak. If a surface should be damaged then this part should be replaced with a new one. Do not use any pointed instrument or metal tool to remove O-rings.

1. Unscrew the hoses from the first stage using the appropriate spanner. Screw the HP and MP plugs into the open ports but leave one HP and one MP port free.
2. Use an 8mm Allen key to unscrew the plug (129603 / 129701 / 129744). Remove the ribbed washer (129611) and the ring (129623 / 129702 / 129747).



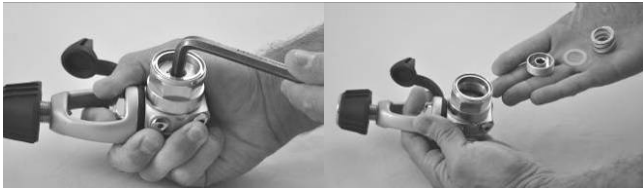
3. Manually remove the diaphragm (129126). Turn the body over to allow the piston (129606) to fall into your hand.



4. Remove the protector (129609).



5. Use an 8mm Allen key to unscrew the adjusting screw (127566). Remove the washer (127568) and then the spring (122244).



Note: The washer may stick in the inside of the adjusting screw. If this occurs, lightly tap the screw onto your palm to release it and allow the washer to drop out.



6. Screw the holding tool 116230 into the free HP port. Clamp the tool into a vice so that the dry chamber (129602) is positioned at the top. Use a 32mm flat spanner to unscrew the dry chamber from the body. Remove the spring pad (127565) and the diaphragm (119159). Remove the body from the vice.



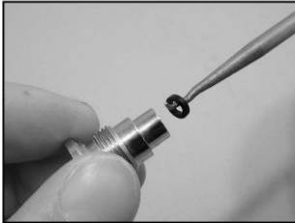
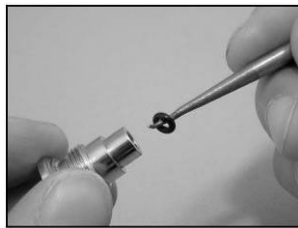
7. Turn the regulator over and allow the pin (A02002) to fall out into your hand.



8. Use an 8mm Allen key to remove the plug (129604 / 129709 / 129746). Turn the body over to allow the spring (122244) and the HP seat (124624) to fall into your palm. Separate the spring and the HP seat.

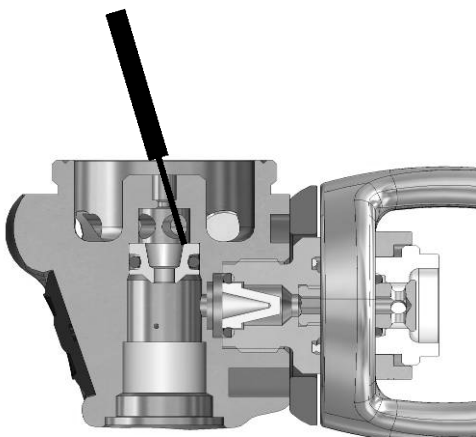


9. Remove the o-ring (213714) from the plug (129604 / 129709 / 129746). Remove the o-ring (124612) and the anti extrusion washer (119129) from the inside of the plug.



Attention: Before continuing, make sure that you **are working on a soft surface** in order to avoid damaging the seat (16) during disassembly.

10. Insert the extraction tool 116236 into the body's central hole, on the MP side (the same side as the diaphragm). Make sure that the tool is in contact with the seat. Hold the tool at a slight angle and press down to remove the seat (127585). Remove the O-ring (124704) from the seat.



If the regulator is an yoke version, go to step 11. If it is a DIN version, go to step 12.

11.

- a. Remove the yoke screw (129618 / 129721) and remove the dust cap (129607).



- b. Use the tool A11001 to unscrew the seat (129212 / 129719). Remove the body from the vice.



- c. Remove the o-ring (124703) and the filter (129209).



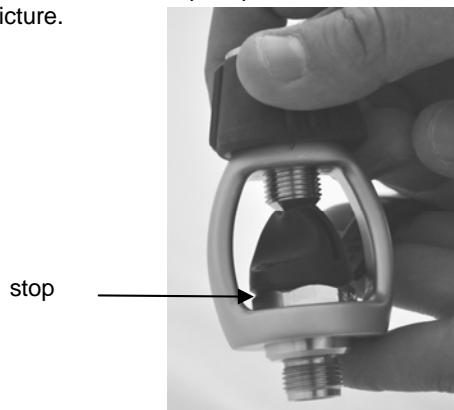
- d. Put the seat (129212 / 129719) on the yoke, thread the screw (129618 / 129721) on the yoke and put this assembly on a valve fitted with an insert.



- e. Unscrew 1 turn the shutter valve (129202 / 129716 / 129207) using a 3mm Allen key, **turn clockwise to unscrew the yoke shutter valve.**



- f. Disassemble the whole from the valve. Place and compress the dust cap (129607) on the yoke. Check the cap stops to the seat as shown on picture.



- g. Unscrew completely with a 3 mm Allen key the shutter valve, **turning clockwise (3 turns).**



- h. Remove the yoke screw and separate the parts.



- i. Remove the o-ring (473056). Then remove the shutter valve from the shutter crown (129614 / 129704 / 129205).



- j. Remove the o-ring (124703) inside the groove of the shutter crown (129614 / 129704 / 129205).



12.

- a. Clamp the tool into a vice so that the DIN connection is upwards. Remove the dust cap (129608).

Take a Din / Yoke adapter (p/n 125237) and thread it onto the hand wheel.



Use a 4 mm Allen key to unscrew the shutter valve (129202 / 129714 / 129207).



Unscrew the adapter. Remove the spring and the shutter crown



- b. Using a 7/16 socket, remove the DIN screw (129213).



- c. Remove the DIN screw (129213), the handwheel (129619 / 129722) and the cap (129608).



- d. Use a 17mm spanner to unscrew the filter holder (129214).



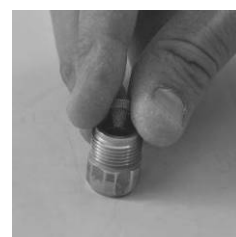
If the filter holder remains on the DIN screw, unscrew it using a 17mm flat spanner by holding the DIN screw with a 7/16" socket.



- e. Remove the o-ring (124703) and the filter (129209) from the filter holder.



- f. Remove the o-ring (444243) from the DIN screw.



- g. Remove the o-ring (124709) from the groove of the shutter crown (129203 / 129706 / 129616). Remove the o-ring (124709).



13. Remove the regulator from the vice and unscrew the tool 116230 from the body. Use a 4mm Allen key to unscrew the plugs (129612 / 129707 / 129613 / 129708) from their ports and remove their O-rings.



END OF DISASSEMBLY



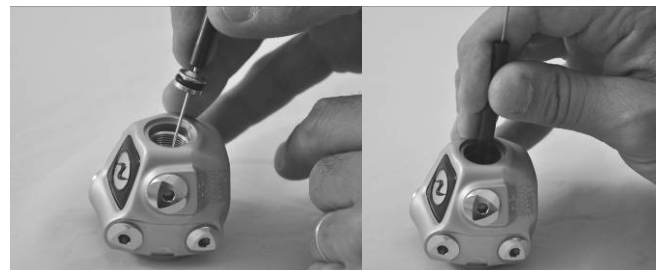
Before starting to re-assemble the regulator, make sure that all replacement parts have been cleaned and lubricated in accordance with Procedure A : Cleaning and Lubricating on page 22.

RE-ASSEMBLY PROCEDURE

1. Fit new lubricated O-rings (124703) to all the plugs (129612 / 129707). Fit new lubricated O-rings (124701) to all the plugs (129613 / 129708). Screw the plugs into all the ports except one HP port, and tighten them using a 4mm Allen key.



2. Fit a new lubricated O-ring (124704) on to the seat (127585). Slide the seat onto the tool 116236, with the sealing crown of the seat against the plastic part of the tool. Push the seat into the body to position it. Push on the plastic part behind the tool to make sure that it is in contact.



Note : Before continuing, closely examine the anti-extrusion washer (21). You will note that it has a flat side and a concave side. For correct assembly the concave side should be against the O-ring, as shown in the picture below.



3. Position the anti extrusion washer (119129) in the plug (129604 / 129709 / 129746) with its concave side facing out. Lubricate the new washer (124612) well and fit it into the plug, against the washer (119129). Visually check that the O-ring is correctly in contact. Lubricate the O-ring



4. Fit a new lubricated O-ring (213714) onto the plug (129604 / 129709 / 129746).



5. Fit a new HP seat (124624), with its blue face toward the interior of the body. Check that the seat sits upright inside the body. Position the spring (122244) around the seat.



6. Fit an 8mm Allen key into the plug (129604 / 129709 / 129746). Engage the plug into the regulator body. Push on the plug to compress the spring, at the same time screwing the plug into the body until it blocks. Using a torque wrench, tighten the plug to 0.5 m.Kg.



7. Turn the regulator over so that the MP side faces you. Insert the pin (A02002) into the central hole. Place the pin support (129121) over the pin. Press several times on the pin support. It should feel like a push-button.



8. Fit a new diaphragm (119159) into the fry chamber (body side). Make sure that the diaphragm is correctly positioned by pressing all around its edge with your finger.



9. Screw the holding tool 116230 into a HP port and clamp the tool in a vice, diaphragm upwards. Screw the dry chamber (129602) fully onto the body by hand. Place the tool 122152. Using a torque wrench, tighten the dry chamber at 2.5 m.kg.





10. Fit the spring pad (127565), flat side down, in the centre of the diaphragm. Engage the spring (127567) in the centre of the spring pad.



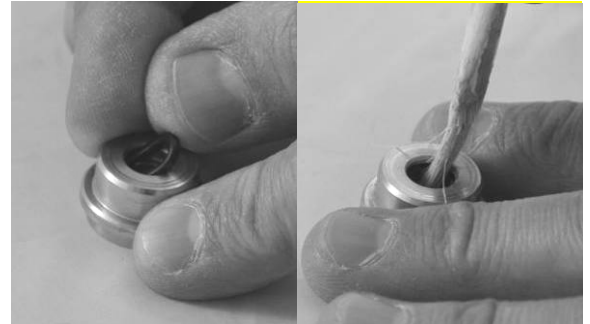
11. Fit the washer (127568) in the adjusting screw (127566). Fit it on the spring. Using an 8mm Allen key, screw the adjusting screw (127566) in the dry chamber, until 1 thread of the screw is still visible.



If the regulator is an yoke version, go to step 14. If it is a DIN version, go to step 15.

12. Assembling the yoke:

- a. Fit a new o-ring (124703) in the groove of the shutter crown (129614 / 129704 / 129205). Lubricate the o-ring (124703) with a brush when it's in the groove.



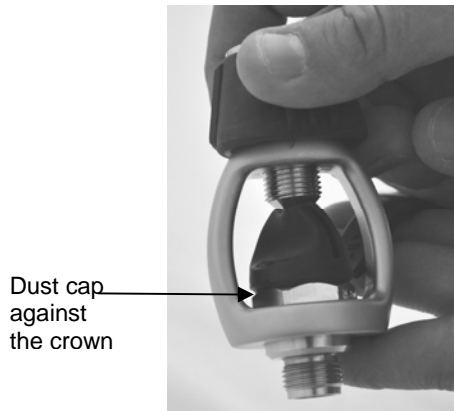
- b. Put the shutter valve (129202 / 129716 / 129207) in the shutter crown and then fit a new lubricated o-ring (473056) on the shutter valve.



- c. Place the yoke retainer (129719) in the yoke. Place the spring (129204) in the retainer, then put the shutter crown (fitted with the shutter valve) on the spring.



- d. Install the dust cap between the yoke and the shutter crown, then tighten the yoke screw so that the spring is compressed



- e. Using a 3mm hex key screw completely the shutter valve by turning the key counter clockwise until the crown begins to turn.
- f. Unscrew the yoke screw and connect the assembly on a cylinder valve equipped with an insert. Tighten the shutter valve up to 3Nm by turning counter clockwise. Remove the assembly from the cylinder valve.



- g. Fit a non lubricated O-ring (124703) inside the yoke retainer and fit the filter (129209) into the O-ring



- h. Fit the yoke ACD cap (129607) between the Body and the yoke (124611 / 129713 / 124610) and screw the ACD assembly into the body by holding the body with the entry downwards.



- i. Using the tool A11001, tighten the yoke retainer up to 2,5m.Kg.

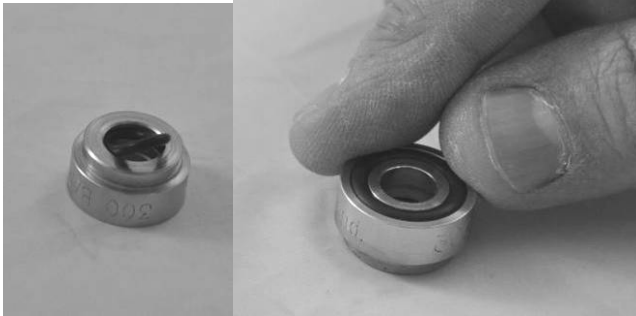


- j. Screw the Yoke screw (129618 / 129721) into the Yoke

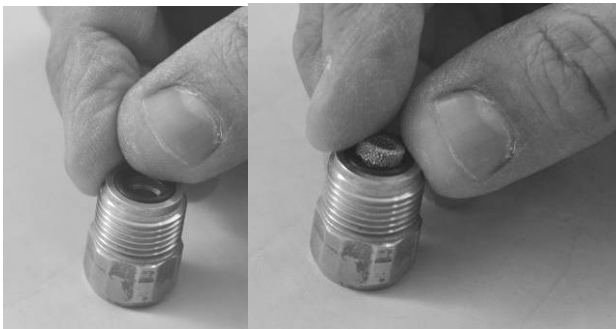


13. DIN connection assembly procedure :

- a. Fit a new lubricated O-ring (473057) inside the groove of the shutter crown (129203 / 129706 / 129616). Fit a new UN-lubricated O-ring (124709) inside the external groove of the crown.



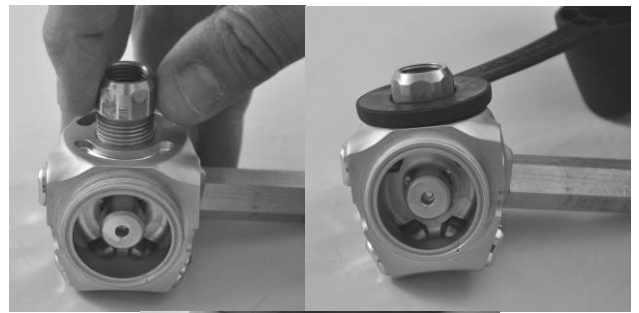
- b. Fit a new **non-lubricated** O-ring (124703) inside the filter holder (129214) then fit the filter (129209).



- c. Fit a new lubricated O-ring (444243) into the ACD DIN screw (129213).



- d. Screw the filter holder (129214) into the body. Slide the Din cap (129608) and the DIN handwheel (129619 / 129722) then screw the ACD DIN screw (129213) inside the filter holder.



- e. Using a torque wrench (with the 7/16 " tool) tighten the ACD DIN screw up to 2,5M.Kg.



- f. Fit the spring (129204) around the ACD DIN screw and put the shutter crown with its O-rings.



- g. Screw a DIN to Yoke Adapter on the DIN handwheel to compress the assembly.



- h. Tighten the DIN Shutter Valve (129202 / 129714 / 129207) up to 0,3 m.Kg (4mm Hex).



- i. Remove the DIN2Yoke Adapter from the Handwheel



- a. Remove the regulator from the clamp, remove the tool and fit a HP plug with its new lubricated O-ring.

ADJUSTING THE FIRST STAGE



Note : Please refer to **Table 5. Checking Specifications** for the adjustment values and the tolerances.

1. Screw an MP gauge (0-16 bar) into one of the MP ports. If the gauge is not fitted with an over-pressure valve, then it is vital that the second stage is fitted so that it can act as an over-pressure valve in the event of an HP leak.
2. Connect the first stage to a cylinder charged to 200bar. Slowly open the cylinder valve to put the regulator under pressure.



Attention: if the MP indicated rapidly exceeds 9.5bar then this indicates a HP leak. Close the cylinder valve immediately and purge the regulator. Refer to **Table 1. Troubleshooting Guide**.

3. After checking that there is no leak, adjust the MP by turning the adjusting screw: Screwing in increases the MP, unscrewing reduces the MP.



Turn the screw by increments of 1/8 of a turn and purge the regulator several times, using the second stage, after each increment. Adjust the MP as follows :

IP at 8.5 bar: ALL LEGEND VERSIONS

Once the MP has been adjusted, purge the second stage about ten times. When this is finished check the pressure gauge. The MP should be stable at the desired value (8.5b). Make any further adjustments that may be necessary. Leave the regulator under pressure for several minutes and check that the MP remains stable. If the MP rises more than 0.3 bar this indicates that there is a leak. Refer to **Table 1. Troubleshooting Guide**.

4. Close the cylinder valve and completely purge the regulator. Put the regulator under pressure once more and check that the MP is at 8.5 bar. If the MP is different, repeat steps 3 and 4 until a stable pressure is obtained.

FINAL ASSEMBLY

1. Slide the protector (129609) around the Dry chamber by ensuring the 2 notches of the protector corresponds with the notches of the body. Then slide the ring (129623 / 129702 / 129717) and the Washer (129611).



The washer (129611) is conical. Pay attention to its direction during the assembly, The cone should be pointing up.



Note : Step 2 and 3 must be done while keeping the regulator under pressure.

2. While the regulator is under pressure, put the piston (129606) inside the dry. Insert the diaphragm (129126) inside the groove of the dry (129602).



3. Using a Hex8 torque wrench, tighten the Dry chamber plug (129604 / 129709 / 129746) on the dry chamber up to 0.4 m.kg. Check the IP is still at 8,5 bar.



4. Turn off the cylinder valve and purge the regulator. Remove the IP gauge and fit the IP plug.

END OF REASSEMBLY

TEST IN WATER

Check that all the MP and HP plugs are in place and that a correctly adjusted second stage is connected to the first stage. Slowly open the cylinder valve to put the regulator under pressure.

Immerse the first stage completely in water to check that there are no leaks.



Note: Do not mistake any bubbles which are trapped in the regulator with a leak. If there is a leak there will be a constant stream of bubbles.

When you are sure that there is no leak, close the cylinder valve and purge the regulator. Remove the first stage from the cylinder and refit the dust cap.

If a leak has been detected then note its source and refer to **Table 1. Troubleshooting Guide.**

Table 1. Troubleshooting Guide

SYMPTOME	CAUSE POSSIBLE	TRAITEMENT
Incease in the IP (Can cause leaks on the 2 nd stage)	1. The HP seat (124624) is worn or damaged	1. Replace the HP seat
	2. Le crown (127585) is damaged.	2. Replace the crown
	3. The O-ring (124612) is worn or damaged.	3. Replace teh O-ring
	4. Plug (129604 / 129709 / 129746) damaged	4. Replace the plug (1)
	5. O-ring (124704) worn or damaged	5. Replace the O-ring
	6. On the body, the sealing area of the O-ring crown (127585) is damaged	6. Replace the body
external leaks	1. O-rings (124701 and/or 124703) are worn or damaged	1. Replace the O-rings
	2. the diaphragm (129126) is worn or damaged	2. Replace the diaphragm
	3. The diaphragm (119159) is worn or damaged	3. Replace the diaphragm
	4. On the body, the sealing area of the diaphragm is damaged	4. Replace the body
	5. The Dry chamber is loose (129602)	5. Tighten the Dry chamber
	6. O ring of the crown (127585) is damaged	6. Replace the O-ring
	7. O-ring (213714) is damaged	7. Replace the O-ring
Débit d'air réduit ou résistance inspiratoire importante du détendeur complet.	1. The cylinder valve is not fully open	1. Turn on the valve and check the tank pressure
	2. The valve needs servicing	2. Try an other cylinder
	3. Filter (129209) clogged	3. Replace the filter
	4. The tank is empty	4. Pressurize the tank at 200bar

Table 2. List of Tools and Service Kits



REF	DESCRIPTION	APPLICATION	US PART NO.
116222	IP gauge 0/16B	Checking the IP	111610
506001	O-ring Tool	Place and remove O-rings	n/a
116236	Crown/lever adjustment tool	Remove / assembly of the crown	109436
116230	Axis	To maintain the regulator in the vice	100395
A11001	Yoke retainer tool	To Tighten the Yoke retainer (129212 or 129719)	111001
N/C	Torque wrench 0.3 à 2.5 m.kg	Crown, dry chamber etc...	n/a
N/C	Extension tool	To Tighten the Yoke retainer (129212 or 129719)	n/a
N/C	Allen Key 3mm	Yoke shutter valve (129207 or 129716)	n/a
N/C	Allen Key 4mm	IP and HP plugs, DIN shutter valve (129202 or 129714)	n/a
N/C	Allen Key 8mm	IP adjustment, remove the plug (129604 or 129709 or 129746)	n/a
N/C	Hex 8mm socket	Plug (129604 or 129709 or 129746) (Use with torque wrench)	n/a
N/C	Wrench 32 mm	remove the dry chamber (129602)	n/a
N/C	Wrench 26 mm	Yoke retainer (129212 ou 129716)	n/a
N/C	Wrench 17 mm	Filter holder (129214)	n/a
122152	Dry Chamber socket	Dry chamber	129602
N/C	hex 3 mm socket	Yoke shutter valve (129207 ou 129716) (use with torque wrench)	n/a
N/C	Hex7/16" socket	DIN screw (129213) (use with torque wrench)	n/a

Réf. 116222 Mano de contrôle MP complet 0/16B non représenté

129797	HP maintenance kit	HP Legend – Legend LX – Legend LUX	129797
--------	--------------------	------------------------------------	--------



Table 3. Recommended cleaners and lubricants

LUBRICANT / CLEANER	APPLICATION	SOURCE
Christolube MCG 111	All O-rings	Aqualung, ref. 480025
 Attention: Silicone parts do not require lubrication. Do not grease them. Greasing silicone parts can change their molecular construction and cause premature degradation of the material.		
Oakite #31	Acid bath for cleaning brass and stainless steel parts.	Oakite Products, Inc.
NETALU	Acid bath for cleaning brass and stainless steel parts.	Aqualung, ref. 455001
Diluted white vinegar	Acid bath for cleaning brass and stainless steel parts.	Household stores
 Attention: Do not use hydrochloric acid for cleaning parts. Hydrochloric acid, even when well diluted, attacks the coating of metal parts and leaves a corrosive deposit that damages plastic parts and O-rings.		
Washing-up liquid (diluted with hot water)	Degreases brass and stainless steel parts; general cleaning of plastic and rubber parts.	Household stores

Procedure A

Cleaning and Lubricating (All Aqualung Regulators)

Cleaning brass and stainless steel parts.

1. Pre-clean by soaking in NETALU diluted to 25%.
2. Cleaning in an ultra-sonic bath filled with a mixture of washing-up liquid + hot water. If some resistant deposits remain then fill the ultrasonic bath with white vinegar and repeat. DO NOT put plastic, rubber, silicone or anodised aluminium parts in contact with vinegar.
3. Rinse in demineralised or fresh water to avoid calcium deposits. Soak for 10 minutes. Dry with filtered low pressure air and then check that their condition is now suitable for re-use.

Cleaning plastic, rubber and anodised aluminium parts.

For anodised aluminium parts : soak in a « NETALU diluted to 25% ». Rinse in fresh water and dry with low-pressure filtered air.
For plastic parts. (casings, plugs..) : clean in an ultrasonic bath containing a mixture of washing-up liquid and hot water. Use only a toothbrush with nylon bristles to remove any deposits. Rinse in fresh water and dry with low-pressure filtered air



Attention: Do not place plastic and rubber parts in contact with acid solutions. This could alter their physical properties and cause degradation and premature breakdown.

Cleaning parts for Nitrox/O2 use.

1. Metal parts : Pre-clean by soaking in NETALU diluted to 25%.
2. Ultrasonic cleaning in Promoclean TP108 diluted at 5% .
3. Rinse in demineralised water. Soak for 10 min.
4. Dry in the open air in a clean and dust-free atmosphere. Place the parts on a white cloth, allow to dry and check after drying that the cloth shows no grease deposits and that the condition of the parts is appropriate for re-use with Nitrox/O2.

Cleaning hoses.

If there is significant corrosion then it is permissible to soak only the ends in an ultrasonic bath, avoiding any possibility of the solution entering the hose. Rinse in fresh water and allow to dry with the connections hanging down. Dry the inside with filtered compressed air before reconnecting the hose to the regulator.

Wiping.

To wipe parts, use a white filter paper, a pure cotton cloth or any other material that **does not produce fluff**.

Inspection.

Visually check under a white light (day light or artificial light).
The parts are completely free of any traces of :

1. organic materials (oil, grease, paint, rust...)
2. cleaning agents
3. dust
4. humidity

Lubrication.

When handling O-rings wear unpowdered latex gloves. It is important not to allow contact between the internal components and the skin or any other source of contamination when the regulator is being prepared for Nitrox use. All seals should be lubricated with Christolube MCG111. Cover the seals with a light film of grease and remove any excess by rolling the seal between finger and thumb. Do not use an excess of grease, this can have the effect of accumulating particles which could damage the O-rings.

Table 4. Torque values

N° REFERENCE	DESCRIPTION	COUPLE
129604 / 129709 / 129746	Counter balance plug	0.5 m.kg.
129602	Dry Chamber	2.5 m.Kg
129603 / 129701 / 129744	Dry Chamber Plug	0.4 m.Kg
129212 / 129719	Yoke retainer	2.5 m.Kg
129202 / 129716 / 129207 / 129714	Shutter valve	0.3 m.Kg
129213	DIN screw	2.5 m.Kg

Table 5. Checking specifications

TEST	CONSIGNES	SPECIFICATIONS
Test d'étanchéité	160 bar < Pression de service < 200 bar	Pas de fuite
Moyenne Pression	160 bar < Pression de service < 200 bar	MP à 8.5 bar ± 0.5 bar : Tout modèle de Legend
Variation MP	160 bar < Pression de service < 200 bar	Après avoir purger plusieurs fois le détendeur, l'augmentation de MP ne doit pas dépasser 0.3 bar en 5-15 sec

Exploded view Legend ACD

No	Réf	Qté	Désignation	Description
1	129808	1	corps HP Legend 2 marqué	Legend 2 1st stage body marked
2	124624	1	Clapet HP	HP seat
3	127585	1	Siège	Crown
4	A02002	1	Aligulle	Pin
5	129121	1	Poussoir	Pin support
6	119159	1	Diaphragme	Diaphragm
7	129402	1	Ecras chambre sèche Legend	Legend dry chamber screw
8	129406	1	Piston Legend	Legend Piston
9	127567	1	Ressort MP	IP spring
10	127565	1	Embase Ressort MP	Spring Pad
11	129126	1	Membrane	Diaphragm
12	127568	1	Rondelle	Washer
13	127566	1	Ecras réglage MP	IP Adjusting screw
14	129209	1	Filtre Legend ACD	ACD Legend filter
15	129613	2	bouchon HP 7/16" Legend	Legend 7/16" HP plug
16	129612	3	Bouchon MP 3/8" Legend	Legend 3/8" IP plug
17	129603	1	Bouchon chambre sèche Legend	Legend dry chamber plug
18	129607	1	Bouchon ACD étrier	Yoke ACD Cap
19	129611	1	Rondelle chambre sèche Legend	Legend dry chamber washer
20	129609	1	Protecteur chambre sèche Legend	Legend dry chamber protector
21	129617	1	Sticker Legend encollé	Legend Slicker (with pasting)
22	129604	1	Chambre de compensation Legend 2	Legend 2 Counter balance cylinder
23	129212	1	siège d'étrier Legend ACD	ACD Legend Yoke retainer
24	129204	1	Ressort ACD	ACD spring
25	129205	1	Siège Obturateur Etrier	Yoke Shutter Crown
26	129207	1	Nez Obturateur Etrier	Yoke Shutter Valve
27	124611	1	Etrier 98 poli	Bright 98 yoke
28	129618	1	Vis d'étrier Legend 2	Legend 2 Yoke screw
29	122244	1	Ressort	Spring
30	124704	1	JT 1.9x7.2 EPDM 80ShA	OR 1.9x7.2 EPDM 80ShA
31	119129	1	Bague Anti Extrusion 1.35 x 3.56 NITRILE 90ShA	Anti Extrusion Washer 1.35 x 3.56 NITRILE 90ShA
32	124612	1	JT 1.78x2.9 EPDM 90ShA	OR 1.78x2.9 EPDM 90ShA
33	213714	1	JT 2x11 EPDM 80ShA	OR 2x11 EPDM 80ShA
34	124703	5	Bague	O-ring
35	473056	1	JT 1.78 x 5.28 EPDM 80ShA	O-ring 1.78 x 5.28 EPDM 80ShA
36	124701	2	Joint torique 1.78x8.74	O-ring 1.78x8.74
37	129623	1	Bague à Allettes	Ring

Ce plan est la propriété d'Aqualung. Il ne doit être ni copié ni diffusé sans autorisation écrite d'Aqualung.
This drawing is confidential. It shall not be copied or disclosed without the written consent of Aqualung.

(A)

Tous les composants en italiques / gras sont inclus dans le kit d'entretien.
All items in bold italics are to be replaced when servicing.
Kit d'entretien premier étage Legend / Legend 1st Stage service kit : 129797.
Kit d'entretien détendeur Legend / Legend regulator service kit : 129799.

Vis: TM	18/01/2011	Ind
180 Avenue 14ème arr. SP 146		
92100 Nanterre (France)		
Tel: (33) 04 97 08 28 88		
Fax: (33) 04 97 08 28 99		
AQUA LUNG®		
VE 129605/A		

Exploded view Legend ACD DIN

(A)

Ce plan est la propriété d'Aqualung. Il ne doit être ni copié ni diffusé sans autorisation écrite d'Aqualung.
This drawing is confidential. It shall not be copied or disclosed without the written consent of Aqualung.

Tous les composants en italiques / gras sont inclus dans le kit d'entretien.
All items in bold italics are to be replaced when servicing.
Kit d'entretien premier étage Legend / Legend 1st Stage service kit : 129797.
Kit d'entretien détenteur Legend / Legend regulator service kit : 129799.

No	Réf	Qté	Désignation	Description
1	129808	1	corps HP Legend 2 marqué	Legend 2 1st stage body marked
2	124624	1	Clapet HP	HP seat
3	127585	1	Siège	Crown
4	A02002	1	Aiguille	Pin
5	129121	1	Poussoir	Pin support
6	119159	1	Diaphragme	Diaphragm
7	129602	1	Ecrou chambre sèche Legend	Legend dry chamber screw
8	129606	1	Piston Legend	Legend Piston
9	127567	1	Ressort MP	IP spring
10	127565	1	Embase Ressort MP	Spring Pad
11	129126	1	Membrane	Diaphragm
12	127568	1	Rondelle	Washer
13	127566	1	Ecrou réglage MP	IP Adjusting screw
14	129209	1	Filtre Legend ACD	ACD Legend filter
15	129613	2	bouchon HP 7/16" Legend	Legend 7/16" HP plug
16	129612	3	Bouchon MP 3/8" Legend	Legend 3/8" IP plug
17	129603	1	Bouchon chambre sèche Legend	Legend dry chamber plug
18	129608	1	Bouchon ACD DIN	Din ACD Cap
19	129611	1	Rondelle chambre sèche Legend	Legend dry chamber washer
20	129609	1	Protecteur chambre sèche Legend	Legend dry chamber protector
21	129617	1	Sticker Legend encollé	Legend Sticker (with pasting)
22	129604	1	Chambre de compensation Legend	Legend 2 Counter balance cylinder
23	129204	1	Ressort ACD	ACD spring
24	122244	1	Ressort	Spring
25	124704	1	JT 1.9x7.2 EPDM 80ShA	OR 1.9x7.2 EPDM 80ShA
26	119129	1	Bague Anti Extrusion 1.35 x 3.56 NITRILE 90ShA	Anti Extrusion Washer 1.35 x 3.56 NITRILE 90ShA
27	124612	1	JT 1.78x2.9 EPDM 90ShA	OR 1.78x2.9 EPDM 90ShA
28	213714	1	JT 2x11 EPDM 80ShA	OR 2x11 EPDM 80ShA
29	129214	1	Porte filtre Legend ACD	ACD Din filter holder
30	129619	1	Volant DIN souple ACD	Soft DIN handwheel
31	129213	1	vis DIN ACD Legend	DIN screw ACD Legend
32	129203	1	Siège d'Obturateur Din	Din shutter crown
33	129202	1	Nex Obturateur DIN	DIN Shutter Valve
34	124703	4	Bague	O-ring
35	124709	1	JT 2.7 x 10.5 85ShA	OR 2.7 x 10.5 85ShA
36	444243	1	JT 1.78x6.07 EPDM 80ShA	OR 1.78x6.07 EPDM 80ShA
37	473057	1	bague	O-ring
38	124701	2	Joint torique 1.78x8.74	O-ring 1.78x8.74
39	129623	1	Bague à Ailettes	Ring

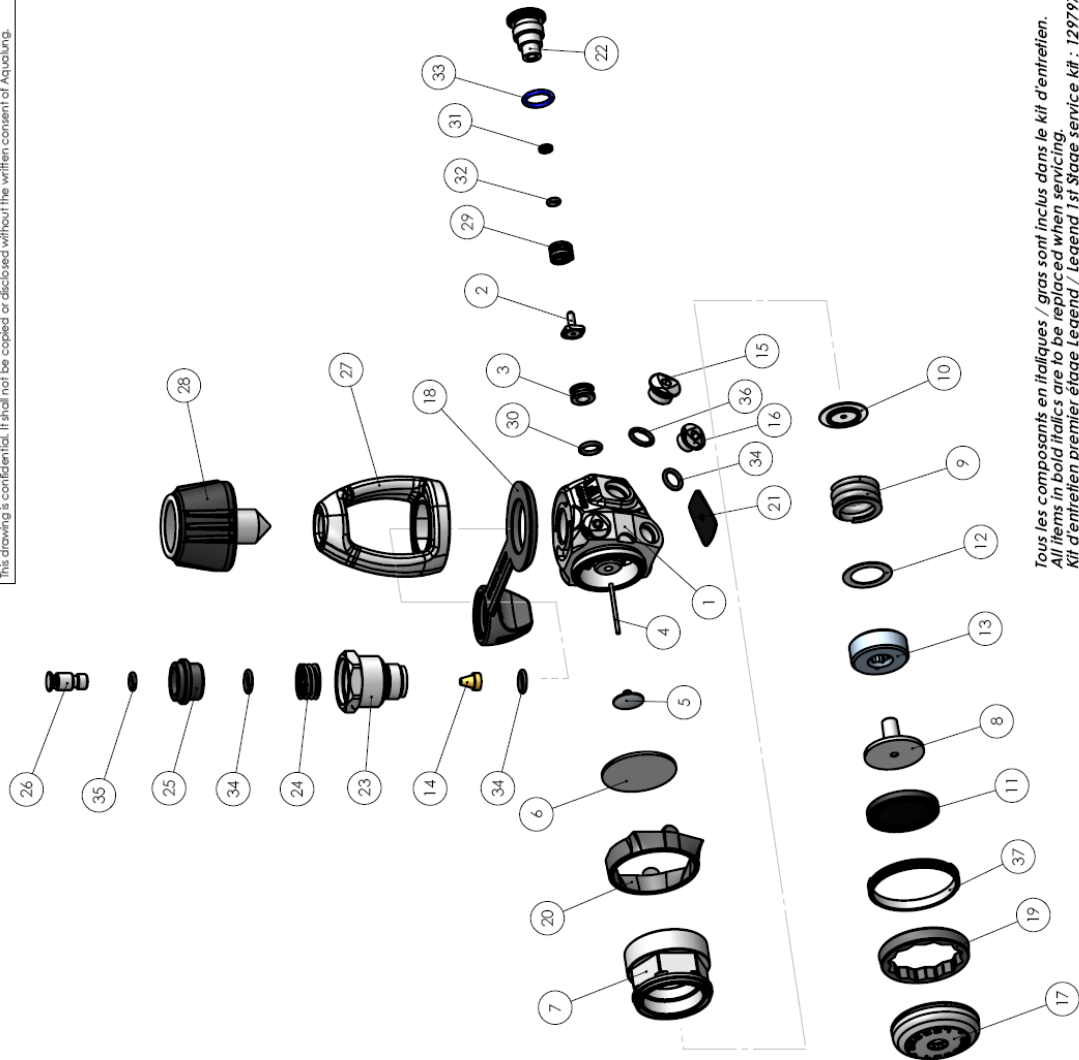
Designation	Premier étage Legend 2 DIN
Description	Legend 2 DIN First Stage
Notice	-----
Date	18/01/2011
N°	18/01/2011
Date Modif	18/01/2011
Ind	18/01/2011

VE 129615 A

Exploded view Legend LX ACD

Ce plan est la propriété d'Aqualung. Il ne doit être ni copié ni diffusé sans autorisation écrite d'Aqualung. This drawing is confidential. It shall not be copied or disclosed without the written consent of Aqualung.			
No	Réf	Désignation	Description
1	129808	1 corps HP Legend 2 marqué	Legend 2 1st stage body marked
2	124624	1 Clapet HP	HP seal
3	127585	1 Siège	Crown
4	A02002	1 Aiguille	Pin
5	129121	1 Poussoir	Pin support
6	119159	1 Diaphragme	Diaphragm
7	129602	1 Ecrou chambre sèche Legend	Legend dry chamber screw
8	129606	1 Piston Legend	Legend Piston
9	127567	1 Ressort MP	IP spring
10	127565	1 Embase Ressort MP	Spring Pad
11	129126	1 Membrane	Diaphragm
12	127568	1 Rondelle	Washer
13	127566	1 Ecrou réglage MP	IP Adjusting screw
14	129209	1 Filtre Legend ACD	ACD Legend filter
15	129613	2 bouchon HP 7/16" Legend	Legend 7/16" HP plug
16	129612	3 Bouchon MP 3/8" Legend	Legend 3/8" IP plug
17	129603	1 Bouchon chambre sèche Legend	Legend dry chamber plug
18	129607	1 Bouchon ACD éfrier	Yoke ACD Cap
19	129611	1 Rondelle chambre sèche Legend	Legend dry chamber washer
20	129609	1 Protecteur chambre sèche Legend	Legend dry chamber protector
21	129617	1 Sticker Legend encollé	Legend Sticker (with pasting)
22	129604	1 Chambre de compensation Legend 2	Legend 2 Counter balance cylinder
23	129212	1 siège d'étrier Legend ACD	ACD Legend Yoke retainer
24	129204	1 Ressort ACD	ACD spring
25	129614	1 Siège Obturateur Etrier Noir	Black Yoke Shutter Crown
26	129207	1 Nez Obturateur Etrier	Yoke Shutter Valve
27	124611	1 Etrier 98 poli	Bright 98 yoke
28	129618	1 Vis d'étrier Legend 2	Legend 2 Yoke screw
29	122244	1 Ressort	Spring
30	124704	1 JT 1.9x7.2 EPDM 80ShA	OR 1.9x7.2 EPDM 80ShA
31	119129	1 Bague Anti Extusion 1.35 x 3.56 NITRILE 90ShA	Anti Extusion Washer 1.35 x 3.56 NITRILE 90ShA
32	124612	1 JT 1.78x2.9 EPDM 90ShA	OR 1.78x2.9 EPDM 90ShA
33	213714	1 JT 2x11 EPDM 80ShA	OR 2x11 EPDM 80ShA
34	124703	5 Bague	O-ring
35	473056	1 JT 1.78 x 5.28 EPDM 80ShA	O-ring 1.78 x 5.28 EPDM 80ShA
36	124701	2 Joint torique 1.78x8.74	O-ring 1.78x8.74
37	129623	1 Bague à Allettes	Ring

(A)



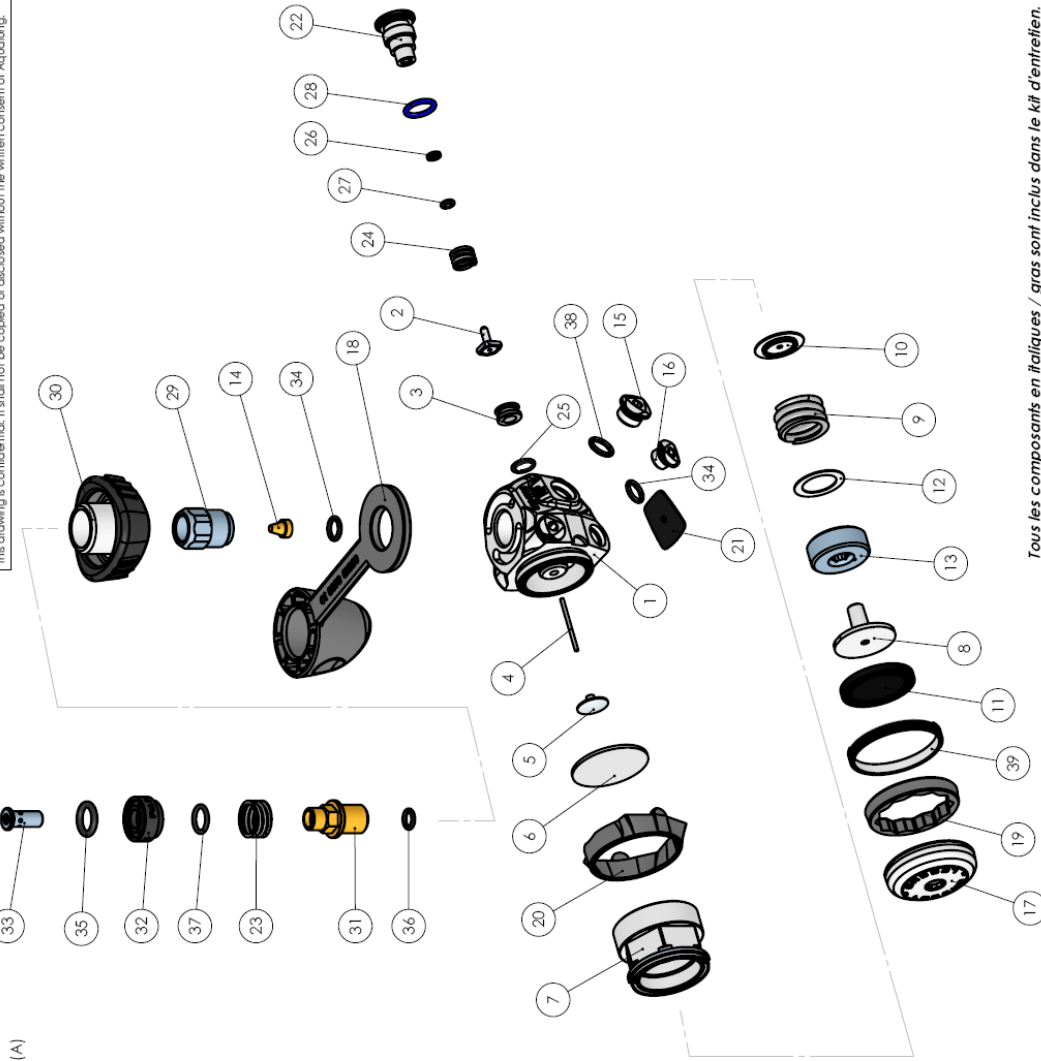
Tous les composants en italiques / gras sont inclus dans le kit d'entretien.
All items in bold italics are to be replaced when servicing.
Kit d'entretien premier étage Legend / Legend 1st Stage service kit : 129797.
Kit d'entretien détendeur Legend / Legend regulator service kit : 129799.

Visas: TM	Prémier étage Legend 2 LX éfrier
Nice Aqualung, 1 Avenue de la Paix - BP 148 06100 NICE Tél: (33) 04 92 08 28 88 Fax: (33) 04 92 08 28 99	Legend 2 LX Yoke First Stage
AQUA LUNG	Notice
VE 129635A	Date
	18/01/2011
	Ind
	Date Modif
	N°
	2063
	06/12/11
	A
	Ind

Exploded view Legend LX ACD DIN

No	Réf	Qté	Désignation	Description
1	129808	1	corps HP Legend 2 marqué	Legend 2 1st stage body marked
2	124624	1	Clapet HP	HP seat
3	127585	1	Siège	Crown
4	A02002	1	Aiguille	Pin
5	129121	1	Poussoir	Pin support
6	119159	1	Diaphragme	Diaphragm
7	129602	1	Ecrus chambre sèche Legend	Legend dry chamber screw
8	129606	1	Piston Legend	Legend Piston
9	127567	1	Ressort MP	IP spring
10	127565	1	Embase Ressort MP	Spring Pad
11	129126	1	Membrane	Diaphragm
12	127568	1	Rondelle	Washer
13	127566	1	Ecrus réglage MP	IP Adjusting screw
14	129209	1	Filtre Legend ACD	ACD Legend filter
15	129613	2	bouchon HP 7/16" Legend	Legend 7/16" HP plug
16	129612	3	Bouchon MP 3/8" Legend	Legend 3/8" IP plug
17	129603	1	Bouchon chambre sèche Legend	Legend dry chamber plug
18	129608	1	Bouchon ACD DIN	Din ACD Cap
19	129611	1	Rondelle chambre sèche Legend	Legend dry chamber washer
20	129609	1	Protecteur chambre sèche Legend	Legend dry chamber protector
21	129617	1	Sticker Legend encollé	Legend Sticker (with pasting)
22	129604	1	Chambre de compensation Legend	Legend 2 Counter balance cylinder
23	129204	1	Ressort ACD	ACD spring
24	122244	1	Ressort	Spring
25	124704	1	JT 1.9x7.2 EPDM 80ShA	OR 1.9x7.2 EPDM 80ShA
26	119129	1	Bague Anti Extrusion 1.35 x 3.56 NITRILE 90ShA	Anti Extrusion Washer 1.35 x 3.56 NITRILE 90ShA
27	124612	1	JT 1.78x2.9 EPDM 90ShA	OR 1.78x2.9 EPDM 90ShA
28	213714	1	JT 2x11 EPDM 80ShA	OR 2x11 EPDM 80ShA
29	129214	1	Porte filtre Legend ACD	ACD Din filter holder
30	129619	1	Volant DIN souple ACD	Soft DIN handwheel
31	129213	1	vis DIN ACD Legend	DIN screw ACD Legend
32	129616	1	Siège d'Obturateur Din Noir	Black Din shutter crown
33	129202	1	Nerz Obturateur DIN	DIN Shutter Valve
34	124703	4	Bague	O-ring
35	124709	1	JT 2.7 x 10.5 85ShA	OR 2.7 x 10.5 85ShA
36	444243	1	JT 1.78x6.07 EPDM 80ShA	OR 1.78x6.07 EPDM 80ShA
37	473057	1	bague	O-ring
38	124701	2	Joint torique 1.78x8.74	O-ring 1.78x8.74
39	129623	1	Bague à Ailettes	Ring

Ce plan est la propriété d'Aqualung. Il ne doit être ni copié ni diffusé sans autorisation écrite d'Aqualung.
This drawing is confidential. It shall not be copied or disclosed without the written consent of Aqualung.



Tous les composants en Italiques / gras sont inclus dans le kit d'entretien.
All items in bold italics are to be replaced when servicing.
Kit d'entretien premier étage Legend / Legend 1st Stage service kit : 129797.
Kit d'entretien détendeur Legend / Legend regulator service kit : 129799.

Vice: TM	Designation	Premier étage Legend 2 LX DIN
06313 CA 0803 CEDIX FRANCE	Description	Legend 2 LX DIN First Stage
Tel: (33) 04 92 08 28 88	Notice	-----
Fax: (33) 04 92 08 28 99	Date	18/01/2011
	N°	129645
	Date Modif	A
	Ind	A

Exploded view Legend ACD Supreme

No	Réf	Qté	Désignation	Description
1	129809	1	corps HP satin Legend 2 marqué	Legend 2 satin first stage body marked
2	124624	1	Clapet HP	HP seat
3	127585	1	Siège	Crown
4	A02002	1	Aiguille	Pin
5	129121	1	Poussoir	Pin support
6	119159	1	Diaphragme	Diaphragm
7	129402	1	Ecroutillage sèche Legend	Legend dry chamber screw
8	129406	1	Piston Legend	Legend Piston
9	127567	1	Ressort MP	IP spring
10	127565	1	Embase Ressort MP	Spring Pad
11	129126	1	Membrane	Diaphragm
12	127568	1	Rondelle	Washer
13	127566	1	Ecroutillage MP	IP Adjusting screw
14	129209	1	Filtre Legend ACD	ACD Legend filter
15	129613	2	bouchon HP 7/16" Legend	Legend 7/16" HP plug
16	129612	3	bouchon MP 3/8" Legend	Legend 3/8" IP plug
17	129744	1	Bouchon chambre sèche satin Legend 2	Legend 2 satin dry chamber plug
18	129407	1	Bouchon ACD étié	Yoke ACD Cap
19	129611	1	Rondelle chambre sèche Legend	Legend dry chamber washer
20	129609	1	Protecteur chambre sèche Legend	Legend dry chamber protector
21	129617	1	Sticker Legend encolle	Legend Sticker (with pasting)
22	129212	1	siège d'étié Legend ACD	ACD Legend Yoke retainer
23	129204	1	Ressort ACD	ACD spring
24	129205	1	Siège Obturateur Etié	Yoke Shutter Crown
25	129207	1	Nez Obturateur Etié	Yoke Shutter Valve
26	124611	1	Etié 98 poli	Bright 98 yoke
27	129618	1	Vis d'étié Legend 2	Legend 2 Yoke screw
28	122244	1	Ressort	Spring
29	124704	1	JT 1.9x7.2 EPDM 80ShA	OR 1.9x7.2 EPDM 80ShA
30	119129	1	Bague Anti Extrusion 1.35 x 3.56 NITRILE 90ShA	Anti Extrusion Washer 1.35 x 3.56 NITRILE 90ShA
31	124612	1	JT 1.78x2.9 EPDM 90ShA	OR 1.78x2.9 EPDM 90ShA
32	213714	1	JT 2x11 EPDM 80ShA	OR 2x11 EPDM 80ShA
33	124703	5	Bague	O-ring
34	473056	1	JT 1.78 x 5.28 EPDM 80ShA	O-ring 1.78 x 5.28 EPDM 80ShA
35	124701	2	Joint torique 1.78x8.74	O-ring 1.78x8.74
36	129747	1	Echangeur chambre sèche satin Legend 2	Legend 2 satin dry chamber Ring
37	129746	1	Chambre compensation satin Legend 2	Legend 2 satin counter balance cylinder

Ce plan est la propriété d'Aqualung. Il ne doit être ni copié ni diffusé sans autorisation écrite d'Aqualung.
This drawing is confidential. It shall not be copied or disclosed without the written consent of Aqualung.

(A)

Tous les composants en italiques / gras sont inclus dans le kit d'entretien.
All items in bold italics are to be replaced when servicing.
Kit d'entretien premier étage Legend / Legend 1st Stage service kit : 129797.
Kit d'entretien détenteur Legend / Legend regulator service kit : 129799.

Designation	Date	Ind
Legend 2 supreme ACD First Stage	29/06/11	
Notice		
N°	08/12/11	A
Date Modif		
N°	2063	

Vis: TM
180 Avenue 14ème rue, SP 148
94100 Nogent-sur-Marne (France)
Tel: (33) 04 97 08 28 86
Fax: (33) 04 97 08 28 99
AQUA LUNG
VE 129725A

Exploded view: Legend ACD Supreme DIN

Ce plan est la propriété d'Aqualung. Il ne doit être ni copié ni diffusé sans autorisation écrite d'Aqualung.
This drawing is confidential. It shall not be copied or disclosed without the written consent of Aqualung.

(A)

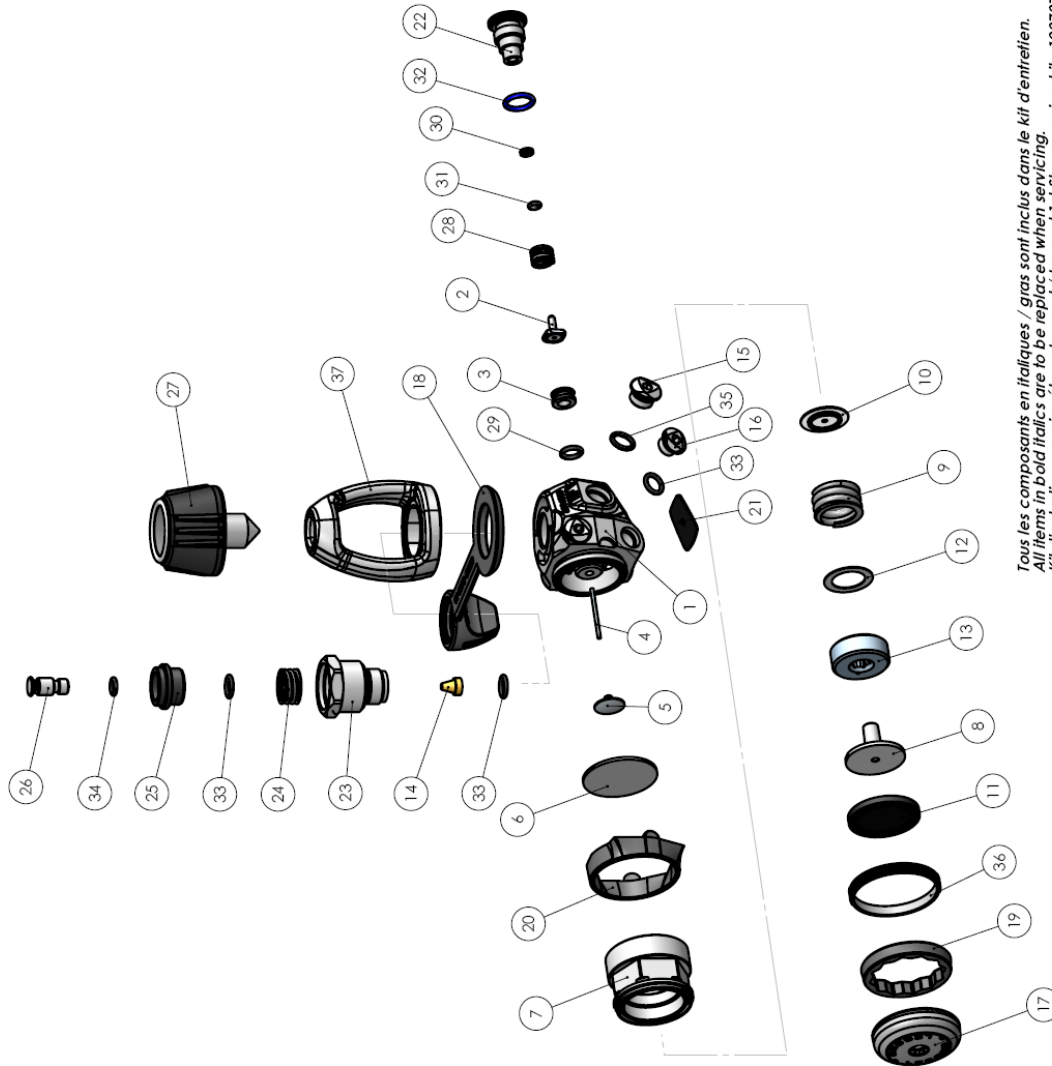
No	Réf	Qté	Désignation	Description
1	129809	1	corps HP satin Legend 2 marqué	Legend 2 satin first stage body marked
2	124624	1	Clapet HP	HP seal
3	127585	1	Siège	Crown
4	A02002	1	Aiguille	Pin
5	129121	1	Poussoir	Pin support
6	119159	1	Diaphragme	Diaphragm
7	129602	1	Ecrou chambre sèche Legend	Legend dry chamber screw
8	129606	1	Piston Legend	Legend Piston
9	127567	1	Ressort MP	IP spring
10	127565	1	Embase Ressort MP	Spring Pad
11	129126	1	Membrane	Diaphragm
12	127568	1	Rondelle	Washer
13	127566	1	Ecrou réglage MP	IP Adjusting screw
14	129209	1	Filtre Legend ACD	ACD Legend filter
15	129613	2	bouchon HP 7/16" HP plug	Legend 7/16" HP plug
16	129612	3	Bouchon MP 3/8" Legend	Legend 3/8" IP plug
17	129744	1	Bouchon chambre sèche satin Legend 2	Legend 2 satin dry chamber plug
18	129608	1	Bouchon ACD DIN	Din ACD Cap
19	129611	1	Rondelle chambre sèche Legend	Legend dry chamber washer
20	129609	1	Protecteur chambre sèche Legend	Legend dry chamber protector
21	129617	1	Sticker Legend encollé	Legend Sticker (with pasting)
22	129746	1	Chambre compensation satin Legend 2	LEGEND 2 satin counter balance cylinder
23	129204	1	Ressort ACD	ACD spring
24	122244	1	Ressort	Spring
25	124704	1	JT 1.9x7.2 EPDM 80ShA	OR 1.9x7.2 EPDM 80ShA
26	119129	1	Bague Anti Extrusion 1.35 x 3.56 NITRILE 90ShA	Anti Extrusion Washer 1.35 x 3.56 NITRILE 90ShA
27	124612	1	JT 1.78x2.9 EPDM 90ShA	OR 1.78x2.9 EPDM 90ShA
28	213714	1	JT 2x11 EPDM 80ShA	OR 2x11 EPDM 80ShA
29	129214	1	Porte filtre Legend ACD	ACD Din filter holder
30	129619	1	Volant DIN souple ACD	Soft DIN handwheel
31	129213	1	vis DIN ACD Legend	DIN screw ACD Legend
32	129203	1	Siège d'Obturateur Din	Din shutter crown
33	129202	1	Ner Obturateur DIN	DIN Shutter Valve
34	124703	4	Bague	O-ring
35	124709	1	JT 2.7 x 10.5 85ShA	OR 2.7 x 10.5 85ShA
36	444243	1	JT 1.78x6.07 EPDM 80ShA	OR 1.78x6.07 EPDM 80ShA
37	473057	1	bague	O-ring
38	124701	2	Joint torique 1.78x8.74	O-ring 1.78x8.74
39	129747	1	Echangeur chambre sèche satin Legend 2	LEGEND 2 satin dry chamber Ring

Tous les composants en italiques / gras sont inclus dans le kit d'entretien.
All items in bold italics are to be replaced when servicing.
Kit d'entretien premier étage Legend / Legend 1st Stage service kit : 129797.
Kit d'entretien deuxième étage Legend / Legend regulator service kit : 129799.

Visa: TM
Aqualung Legend ACD HP 146
06311 CA 0803 CDD/FRANCE
Tel: (33) 04 92 08 28 88
Fax: (33) 04 92 08 28 99
AQUALUNG
VE 129735 A

Legend LX ACD Supreme

No	Réf	Qté	Désignation	Description
1	129809	1	corps HP satin Legend 2 marqué	Legend 2 satin first stage body marked
2	124624	1	Clapet HP	HP seal
3	127585	1	Siège	Crown
4	A02002	1	Aiguille	Pin
5	129121	1	Poussoir	Pin support
6	119159	1	Diaphragme	Diaphragm
7	129602	1	Ecrou chambre sèche Legend	Legend dry chamber screw
8	129606	1	Piston Legend	Legend Piston
9	127567	1	Ressort MP	IP spring
10	127565	1	Embase Ressort MP	Spring Pad
11	129126	1	Membrane	Diaphragm
12	127568	1	Rondelle	Washer
13	127566	1	Ecrou réglage MP	IP Adjusting screw
14	129209	1	Filet Legend ACD	ACD Legend filter
15	129613	2	bouchon HP 7/16" Legend	Legend 7/16" HP plug
16	129612	3	Bouchon MP 3/8" Legend	Legend 3/8" IP plug
17	129744	1	Bouchon chambre sèche satin Legend 2	Legend 2 satin dry chamber plug
18	129607	1	Bouchon ACD étiérier	Yoke ACD Cap
19	129611	1	Rondelle chambre sèche Legend	Legend dry chamber washer
20	129609	1	Protecteur chambre sèche Legend	Legend dry chamber protector
21	129617	1	Sticker Legend encollé	Legend Sticker (with pasting)
22	129746	1	Chambre compensation satin Legend 2	LEGEND 2 satin counter balance cylinder
23	129212	1	siège d'étrier Legend ACD	ACD Legend Yoke retainer
24	129204	1	Ressort ACD	ACD spring
25	129614	1	Siège Obturateur Etrier Noir	Black Yoke Shutter Crown
26	129207	1	Nez Obturateur Etrier	Yoke Shutter Valve
27	129618	1	Vis d'étrier Legend 2	Legend 2 Yoke screw
28	122244	1	Ressort	Spring
29	124704	1	JT 1.9x7.2 EPDM 80SHA	OR 1.9x7.2 EPDM 80SHA
30	119129	1	Bague Anti Exclusion 1.35 x 3.56 NITRILE 90SHA	Anti Exclusion Washer 1.35 x 3.56 NITRILE 90SHA
31	124612	1	JT 1.78x2.9 EPDM 90SHA	OR 1.78x2.9 EPDM 90SHA
32	213714	1	JT 2x11 EPDM 80SHA	OR 2x11 EPDM 80SHA
33	124703	5	Bague	O-ring
34	473056	1	JT 1.78 x 5.28 EPDM 80SHA	O-ring 1.78 x 5.28 EPDM 80SHA
35	124701	2	Joint torique 1.78x8.74	O-ring 1.78x8.74
36	129747	1	Echangeur chambre sèche satin Legend 2	LEGEND 2 satin dry chamber Ring
37	124610	1	Etrier satin	Satin yoke



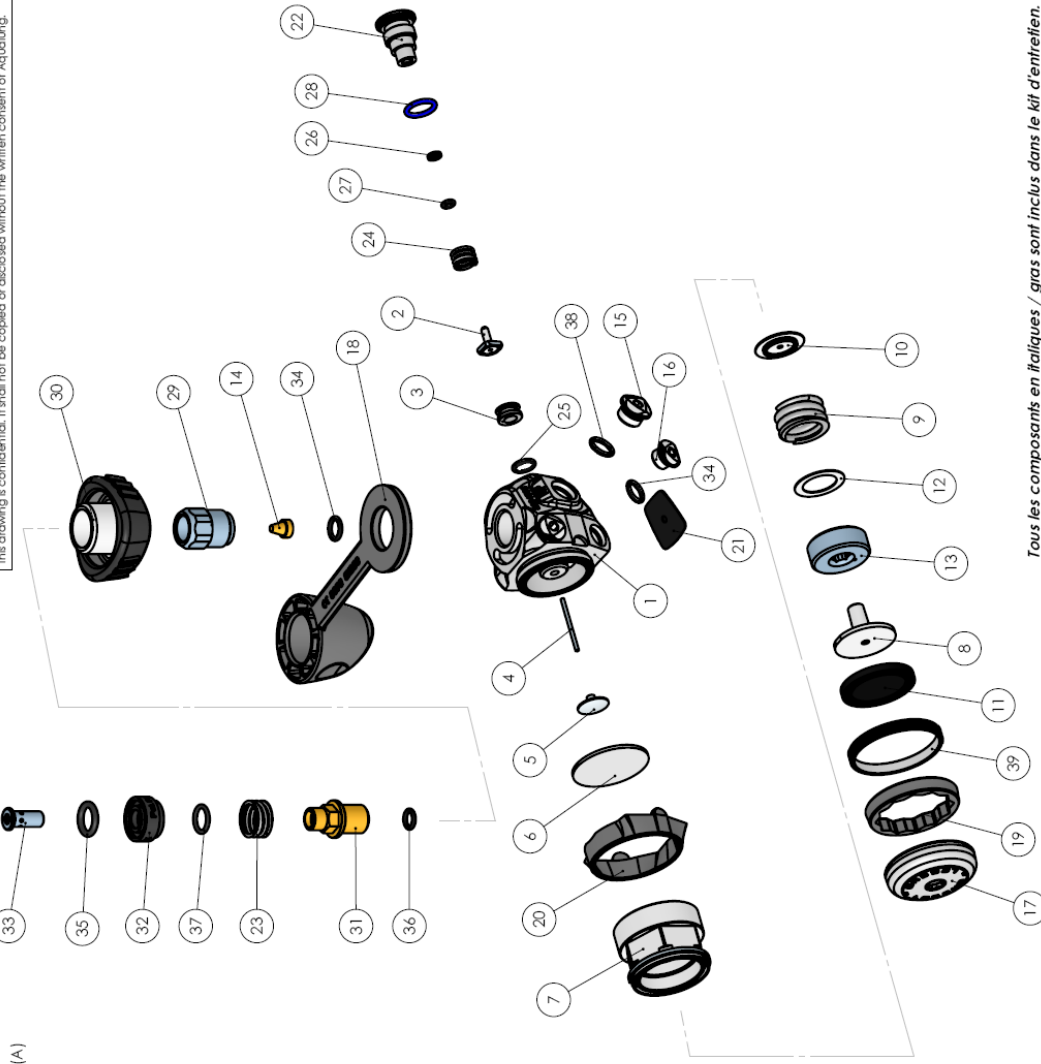
Tous les composants en italiques / gras sont inclus dans le kit d'entretien.
All items in bold italics are to be replaced when servicing.
Kit d'entretien premier étage Legend / Legend 1st Stage service kit: 129797.
Kit d'entretien deuxième étage Legend / Legend regulator service kit: 129799.

[illegible]

Legend LX ACD Supreme DIN

No	Réf	Qté	Désignation	Description
1	129809	1	corps HP satin Legend 2 marqué	Legend 2 satin first stage body marked
2	124624	1	Clapet HP	HP seal
3	127585	1	Siège	Crown
4	A02002	1	Aiguille	Pin
5	129121	1	Poussoir	Pin support
6	119159	1	Diaphragme	Diaphragm
7	129602	1	Ecrou chambre sèche Legend	Legend dry chamber screw
8	129606	1	Piston Legend	Legend Piston
9	127567	1	Ressort MP	IP spring
10	127565	1	Embase Ressort MP	Spring Pad
11	129126	1	Membrane	Diaphragm
12	127568	1	Rondelle	Washer
13	127566	1	Ecrou réglage MP	IP Adjusting screw
14	129209	1	Filtre Legend ACD	ACD Legend filter
15	129613	2	bouchon HP 7/16" Legend	Legend 7/16" HP plug
16	129612	3	Bouchon MP 3/8" Legend	Legend 3/8" IP plug
17	129744	1	Bouchon chambre sèche satin Legend 2	Legend 2 satin dry chamber plug
18	129608	1	Bouchon ACD DIN	Din ACD Cap
19	129611	1	Rondelle chambre sèche Legend	Legend dry chamber washer
20	129609	1	Protecteur chambre sèche Legend	Legend dry chamber protector
21	129617	1	Sticker Legend encollé	Legend Sticker (with pasting)
22	129746	1	Chambre compensation satin Legend 2	LEGEND 2 satin counter balance cylinder
23	129204	1	Ressort ACD	ACD spring
24	122244	1	Ressort	Spring
25	124704	1	JT 1.9x7.2 EPDM 80ShA	OR 1.9x7.2 EPDM 80ShA
26	119129	1	Bague Anti Extrusion 1.35 x 3.56 NITRILE 90ShA	Anti Extrusion Washer 1.35 x 3.56 NITRILE 90ShA
27	124612	1	JT 1.78x2.9 EPDM 90ShA	OR 1.78x2.9 EPDM 90ShA
28	213714	1	JT 2x11 EPDM 80ShA	OR 2x11 EPDM 80ShA
29	129214	1	Porte filtre Legend ACD	ACD Din filter holder
30	129619	1	Volant DIN souple ACD	Soft DIN handwheel
31	129213	1	vis DIN ACD Legend	DIN screw ACD Legend
32	129616	1	Siège d'Obturateur Din Noir	Black Din shutter crown
33	129202	1	Ner Obturateur DIN	DIN Shutter Valve
34	124703	4	Bague	O-ring
35	124709	1	JT 2.7 x 10.5 85ShA	OR 2.7 x 10.5 85ShA
36	444243	1	JT 1.78x6.07 EPDM 80ShA	OR 1.78x6.07 EPDM 80ShA
37	473057	1	bague	O-ring
38	124701	2	Joint torique 1.78x8.74	O-ring 1.78x8.74
39	129747	1	Echangeur chambre sèche satin Legend 2	LEGEND 2 satin dry chamber Ring

Ce plan est la propriété d'Aqualung. Il ne doit être ni copié ni diffusé sans autorisation écrite d'Aqualung.
This drawing is confidential. It shall not be copied or disclosed without the written consent of Aqualung.



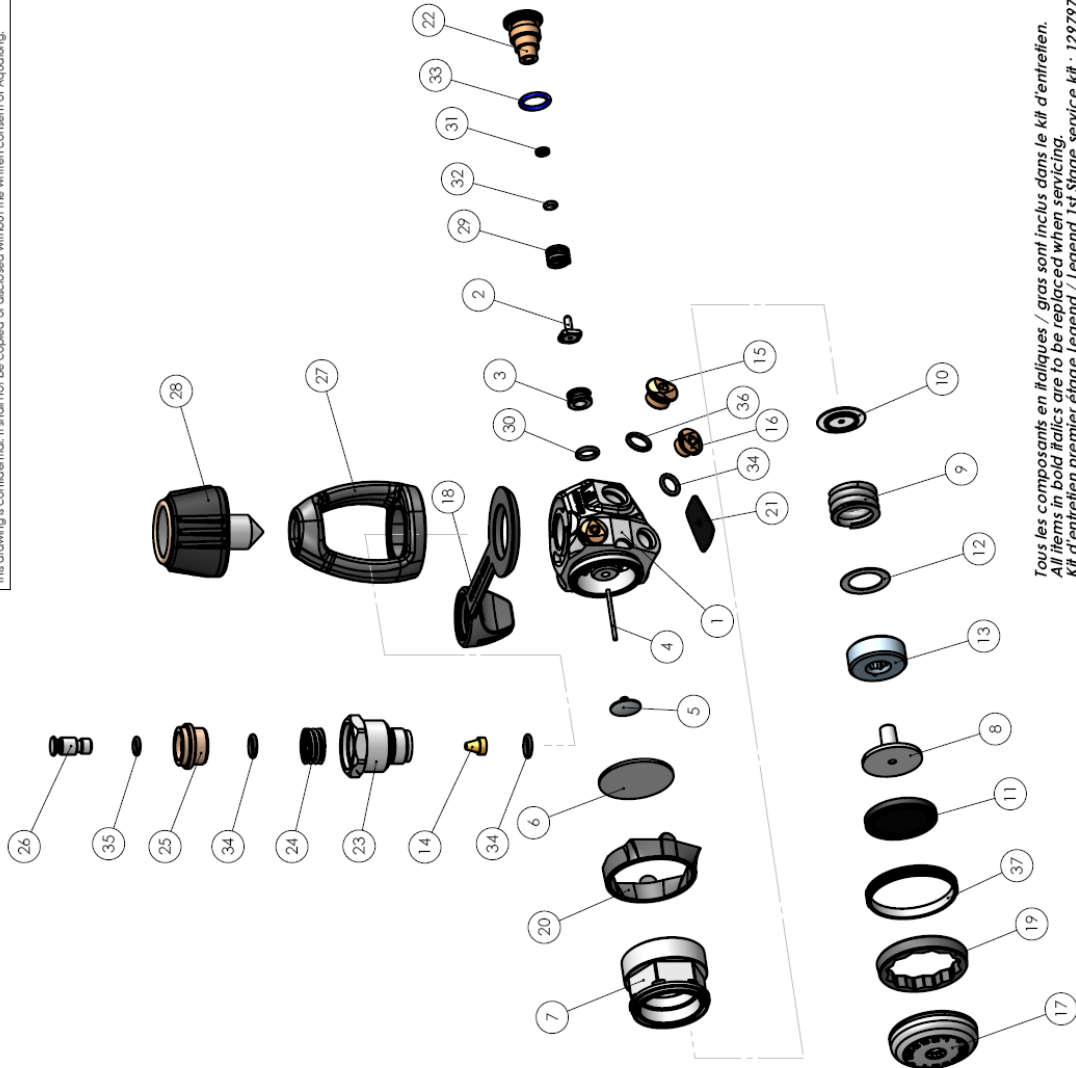
Tous les composants en italiques / gras sont inclus dans le kit d'entretien.
All items in bold italics are to be replaced when servicing.
Kit d'entretien premier étage Legend / Legend 1st Stage service kit : 129797.
Kit d'entretien détenteur Legend / Legend regulator service kit : 129799.

Vice: TM	Premier étage Legend 2 LX Supreme ACD DIN
0631 CA 0803 CDDX FRANCE	Legend 2 LX Supreme ACD DIN First Stage
Tel: (33) 04 92 08 28 88	Notice
Fax: (33) 04 92 08 28 99	Date
	29/06/11
	N°
	VE 129755 A

Legend LUX ACD – LUX ACD Suprême

No	Réf	Qté	Désignation	Description	(A)
1	129811	1	Corps HP Legend 2 PVD marqué	Legend 2 PVD 1st stage body marked	
2	124624	1	Clapet HP	HP seat	
3	127585	1	Siège	Crown	
4	A02002	1	Aiguille	Pin	
5	129121	1	Poussoir	Pin support	
6	119159	1	Diaphragme	Diaphragm	
7	129602	1	Ecras chambre sèche Legend	Legend dry chamber screw	
8	129606	1	Piston Legend	Legend Piston	
9	127567	1	Ressort MP	IP spring	
10	127565	1	Embase Ressort MP	Spring Pad	
11	129126	1	Membrane	Diaphragm	
12	127568	1	Rondelle	Washer	
13	127566	1	Ecras réglage MP	IP Adjusting screw	
14	129209	1	Filtre Legend ACD	ACD Legend filter	
15	129708	2	bouchon HP 7/16" Legend PVD	PVD Legend 7/16" HP plug	
16	129707	3	Bouchon MP 3/8" Legend PVD	PVD Legend 3/8" IP plug	
17	129701	1	Bouchon chambre sèche Legend PVD	PVD Legend dry chamber plug	
18	129607	1	Bouchon ACD étié	Yoke ACD Cap	
19	129611	1	Rondelle chambre sèche Legend	Legend dry chamber washer	
20	129609	1	Protecteur chambre sèche Legend	Legend dry chamber protector	
21	129617	1	Sticker Legend encollé	Legend Sticker (with pasting)	
22	129709	1	Bouchon Barillet PVD	PVD Counter balance plug	
23	129719	1	Siège d'étié Legend ACD PVD	PVD ACD Legend Yoke retainer	
24	129204	1	Ressort ACD	ACD spring	
25	129704	1	Siège Obturateur Etrier PVD	PVD Yoke Shutter Crown	
26	129716	1	Nez Obturateur Etrier PVD	PVD Yoke Shutter Valve	
27	129713	1	Etrier PVD	PVD Yoke	
28	129721	1	Vis d'étrier Legend PVD	PVD Legend Yoke screw	
29	122244	1	Ressort	Spring	
30	124704	1	JT 1.9x7.2 EPDM 80SHA	OR 1.9x7.2 EPDM 80SHA	
31	119129	1	Bague Anti Exclusion 1.35 x 3.56 NITRILE 90SHA	Anti Exclusion Washer 1.35 x 3.56 NITRILE 90SHA	
32	124612	1	JT 1.78x2.9 EPDM 90SHA	OR 1.78x2.9 EPDM 90SHA	
33	213714	1	JT 2x11 EPDM 80SHA	OR 2x11 EPDM 80SHA	
34	124703	5	Bague	O-ring	
35	473056	1	JT 1.78 x 5.28 EPDM 80SHA	O-ring 1.78 x 5.28 EPDM 80SHA	
36	124701	2	Joint torique 1.78x8.74	O-ring 1.78x8.74	
37	129702	1	Bague à Alèthes Legend PVD	PVD Legend Ring	

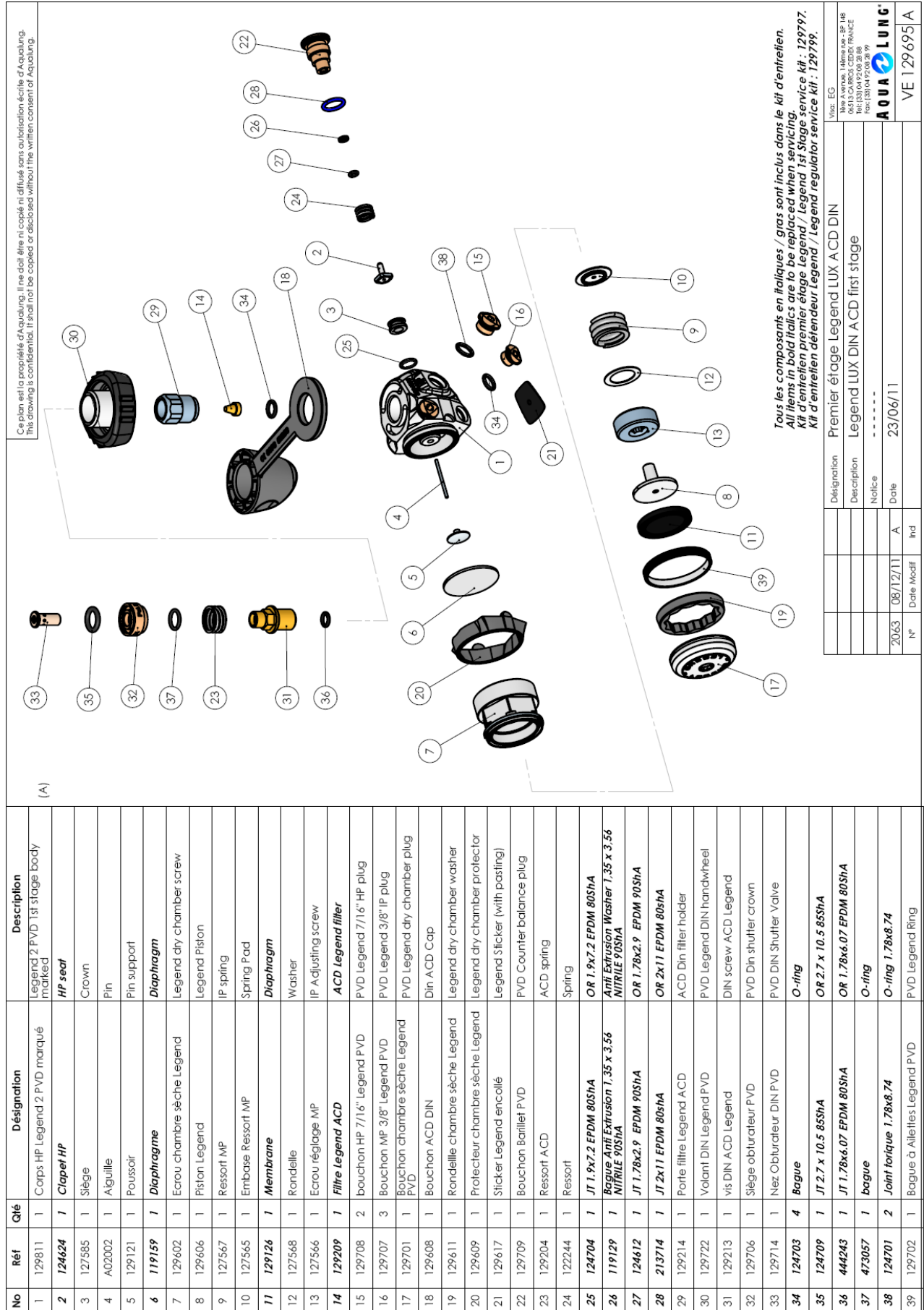
Ce plan est la propriété d'Aqualung. Il ne doit être ni copié ni diffusé sans autorisation écrite d'Aqualung.
This drawing is confidential. It shall not be copied or disclosed without the written consent of Aqualung.



Tous les composants en italiques / gras sont inclus dans le kit d'entretien.
All items in bold italics are to be replaced when servicing.
Kit d'entretien premier étage Legend / Legend 1st Stage service kit : 129797.
Kit d'entretien détenteur Legend / Legend regulator service kit : 129799.

Via: EG	Legend LUX ACD first stage
Désignation	Legend LUX ACD first stage
Description	
Notice	
Date	23/06/11
N°	2063
Date Modif	08/12/11
Ind	A
	VE 129685 A

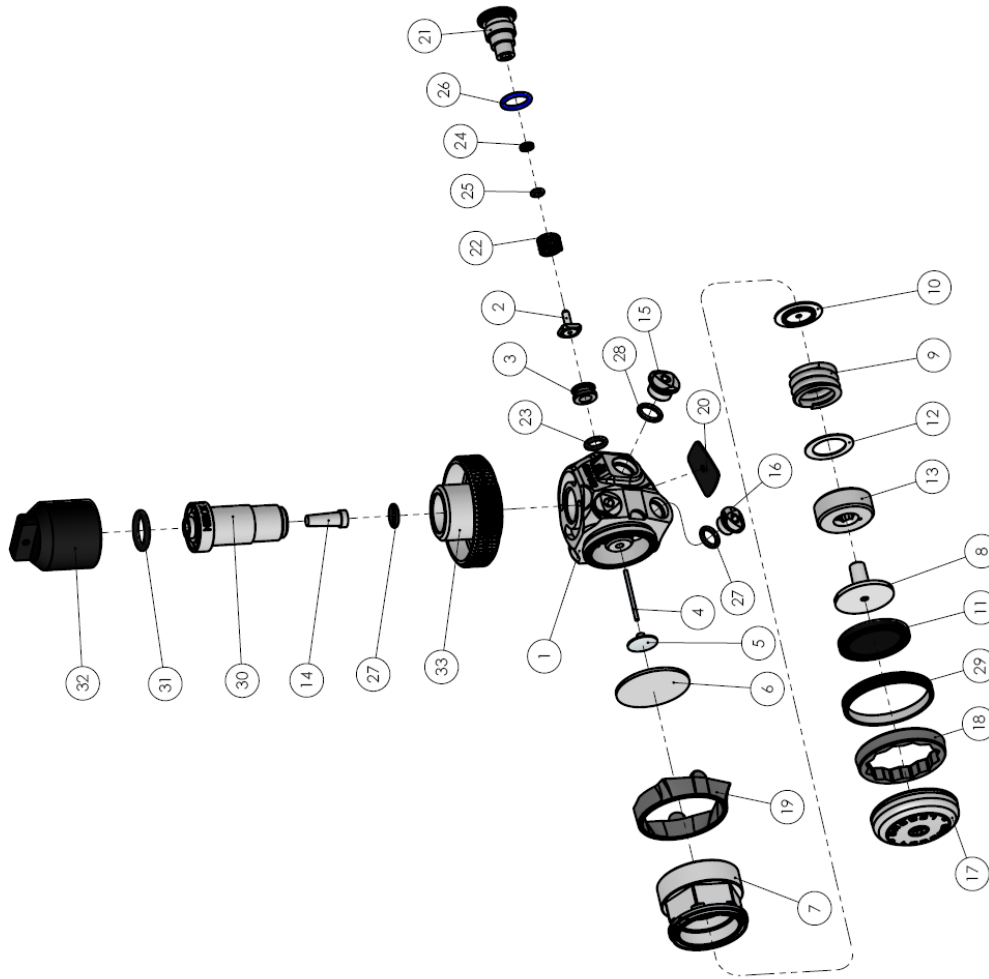
Legend LUX ACD DIN – LUX ACD DIN Supreme



Legend Supreme NITROX / O2

Ce plan est la propriété d'Aqualung. Il ne doit être ni copié ni diffusé sans autorisation écrite d'Aqualung.
This drawing is confidential. It shall not be copied or disclosed without the written consent of Aqualung.

(A)



No	Référence	Qté	Désignation	Description
1	129809	1	corps HP satin Legend 2 marqué	Legend 2 satin first stage body marked
2	124624	1	Clapet HP	HP seat
3	127585	1	Siège	Crown
4	A02002	1	Aiguille	Pin
5	129121	1	Poussoir	Pin support
6	119159	1	Diaphragme	Diaphragm
7	129602	1	Ecras chambre sèche Legend	Legend dry chamber screw
8	129606	1	Piston Legend	Legend Piston
9	127567	1	Ressort MP	IP spring
10	127565	1	Embase Ressort MP	Spring Pad
11	129126	1	Membrane	Diaphragm
12	127568	1	Rondelle	Washer
13	127566	1	Ecras réglage MP	IP Adjusting screw
14	129151	1	Filtre	Filter
15	129613	2	bouchon HP 7/16" Legend	Legend 7/16" HP plug
16	129612	3	Bouchon MP 3/8" Legend	Legend 3/8" IP plug
17	129744	1	Bouchon chambre sèche satin Legend 2	Legend 2 satin dry chamber plug
18	129611	1	Rondelle chambre sèche Legend	Legend dry chamber washer
19	129609	1	Protecteur chambre sèche Legend	Legend dry chamber protector
20	129617	1	Sticker Legend encollé	Legend Sticker (with pasting)
21	129746	1	Chambre compensation satin Legend 2	LEGEND 2 satin counter balance cylinder
22	122244	1	Ressort	Spring
23	124704	1	JT 1.9x7.2 EPDM 80SHA	OR 1.9x7.2 EPDM 80SHA
24	119129	1	Bague Anti Extrusion 1.35 x 3.56 NITRILE 90	Anti Extrusion Washer 1.35 x 3.56 NITRILE 90
25	124612	1	JT 1.78x2.9 EPDM 90SHA	OR 1.78x2.9 EPDM 90SHA
26	213714	1	JT 2x11 EPDM 80SHA	OR 2x11 EPDM 80SHA
27	124703	4	Bague	O-ring
28	124701	2	Joint torique 1.78x8.74	O-ring 1.78x8.74
29	129747	1	Echangeur chambre sèche satin Legend 2	LEGEND 2 satin dry chamber Ring
30	129211	1	Vis de siège Legend Nitrox	Nitrox Legend HP seat
31	124632	1	Joint torique 2.62x13.94	O-ring 2.62x13.94
32	124635	1	Bouchon Nitrox 300B	Stopper Nitrox 300B
33	129794	1	Volant Legend 2 Nitrox/O2	O2/Nitrox Legend 2 Handwheel

Tous les composants en italiques / gras sont inclus dans le kit d'entretien.

All items in bold italics are to be replaced when servicing.

Kit d'entretien Legend 2 Supreme Nitrox-O2 / Nitrox-O2 Supreme Legend 2 service kit : 129796.

Via: EG		Premier étage Legend 2 Suprême Nitrox/O2	
1000 Avenue 14ème rue, 3P 146		Legend 2 Supreme Nitrox/O2 First Stage	
Aqualung		Notice	
Tel: (33) 04 92 08 28 86		Date	
Fax: (33) 04 92 08 28 99		02/08/2011	
AQUA LUNG		N°	
VE C576 A		Date Modif	
		Ind	



1ere Avenue – 14^e rue – BP 148
06513 CARROS cedex – France
☎ 00.33.(0)4.92.08.28.88
FAX 00.33.(0)4.92.08.28.99