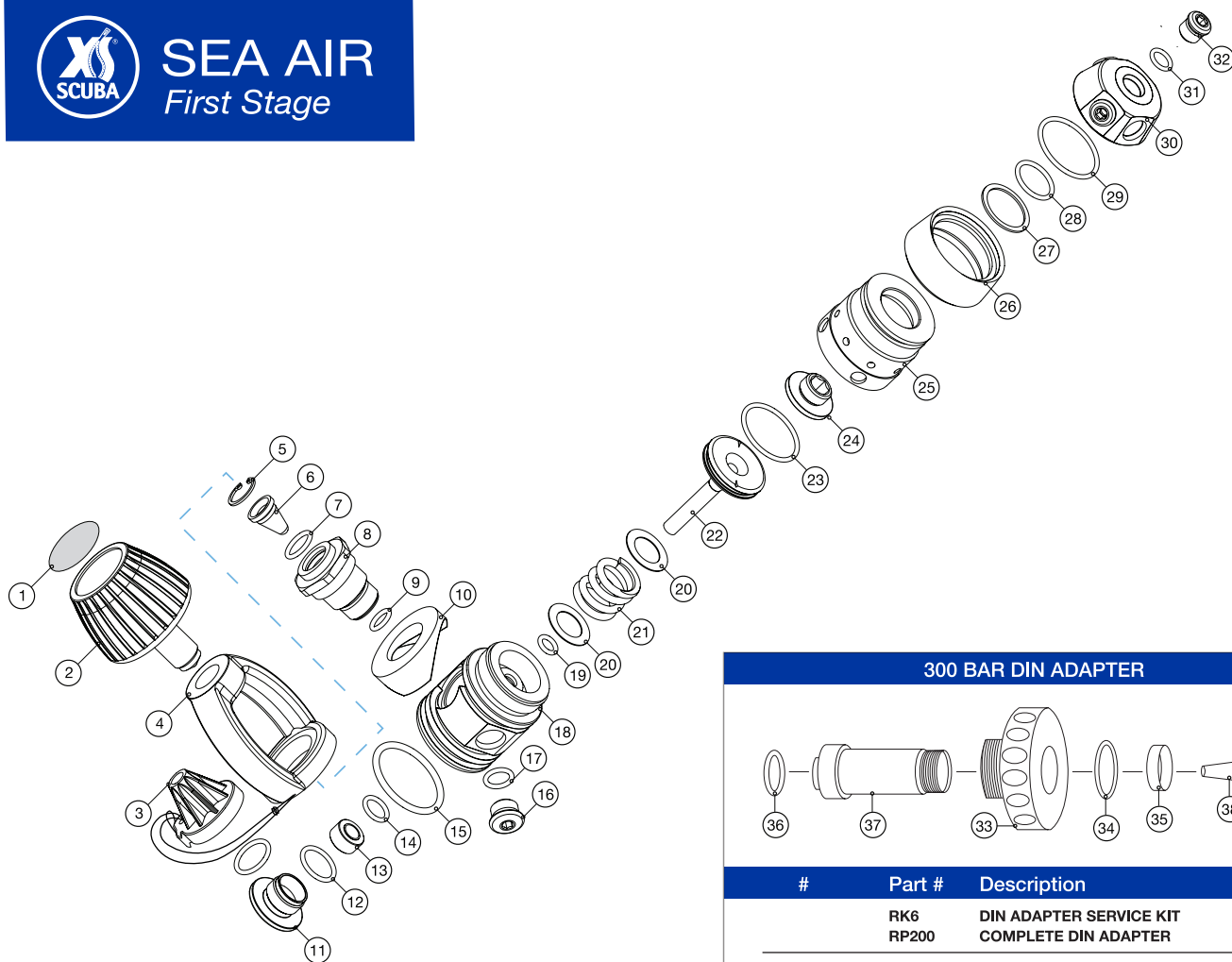
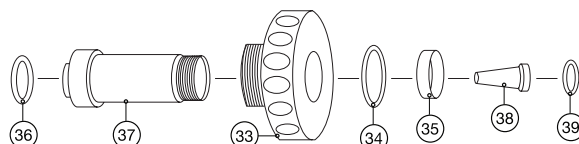




SEA AIR  
First Stage



#### 300 BAR DIN ADAPTER



#	Part #	Description
	<b>RK6</b>	<b>DIN ADAPTER SERVICE KIT</b>
	<b>RP200</b>	<b>COMPLETE DIN ADAPTER</b>
33.	RP200-33	HANDWHEEL
34.	RP200-34	WASHER
35.	RP200-35	SPACER
36.	<b>RP200-36</b>	<b>O-RING</b>
37.	RP200-37	DIN RETAINER
38.	<b>RP200-38</b>	<b>FILTER</b>
39.	<b>RP200-17</b>	<b>O-RING</b>

Part numbers in bold italics are standard replacement parts

#	Part #	Description
	RK1	SERVICE KIT - SEA AIR 1ST STAGE - YOKE
1.	RP200-01	YOKE SCREW DECAL
2.	RP200-02	YOKE SCREW
3.	RP200-03	DUST CAP w/SPRING & O-RING
4.	RP200-04	YOKE
5.	<b>RP200-05</b>	<b>RETAINING CLIP</b>
6.	<b>RP200-06</b>	<b>FILTER</b>
7.	<b>RP200-07</b>	<b>O-RING</b>
8.	RP200-08	YOKE RETAINER
9.	<b>RP200-29</b>	<b>O-RING</b>
10.	RP200-10	SADDLE
11.	RP200-11	HP SEAT RETAINER
12.	<b>RP200-12</b>	<b>O-RING</b>
13.	<b>RP200-13</b>	<b>HP SEAT</b>
14.	<b>RP200-07</b>	<b>O-RING</b>
15.	RP200-15	O-RING
16.	RP200-16	HP PORT PLUG

#	Part #	Description
17.	RP200-17	O-RING
18.	RP200-18	MAIN BODY
19.	<b>RP200-19</b>	<b>O-RING</b>
20.	RP200-20	SPRING WASHER
21.	RP200-21	HP SPRING
22.	RP200-22	PISTON
23.	<b>RP200-23</b>	<b>O-RING</b>
24.	RP200-24	SWIVEL RETAINER
25.	RP200-25	PISTON CAP
26.	RP200-26	COLLAR
27.	RP200-27	WASHER
28.	<b>RP200-28</b>	<b>O-RING</b>
29.	<b>RP200-39</b>	<b>O-RING</b>
30.	RP200-30	SWIVEL CAP
31.	RP200-29	O-RING
32.	RP200-32	LP PORT PLUG

Part numbers in bold italics are standard replacement parts