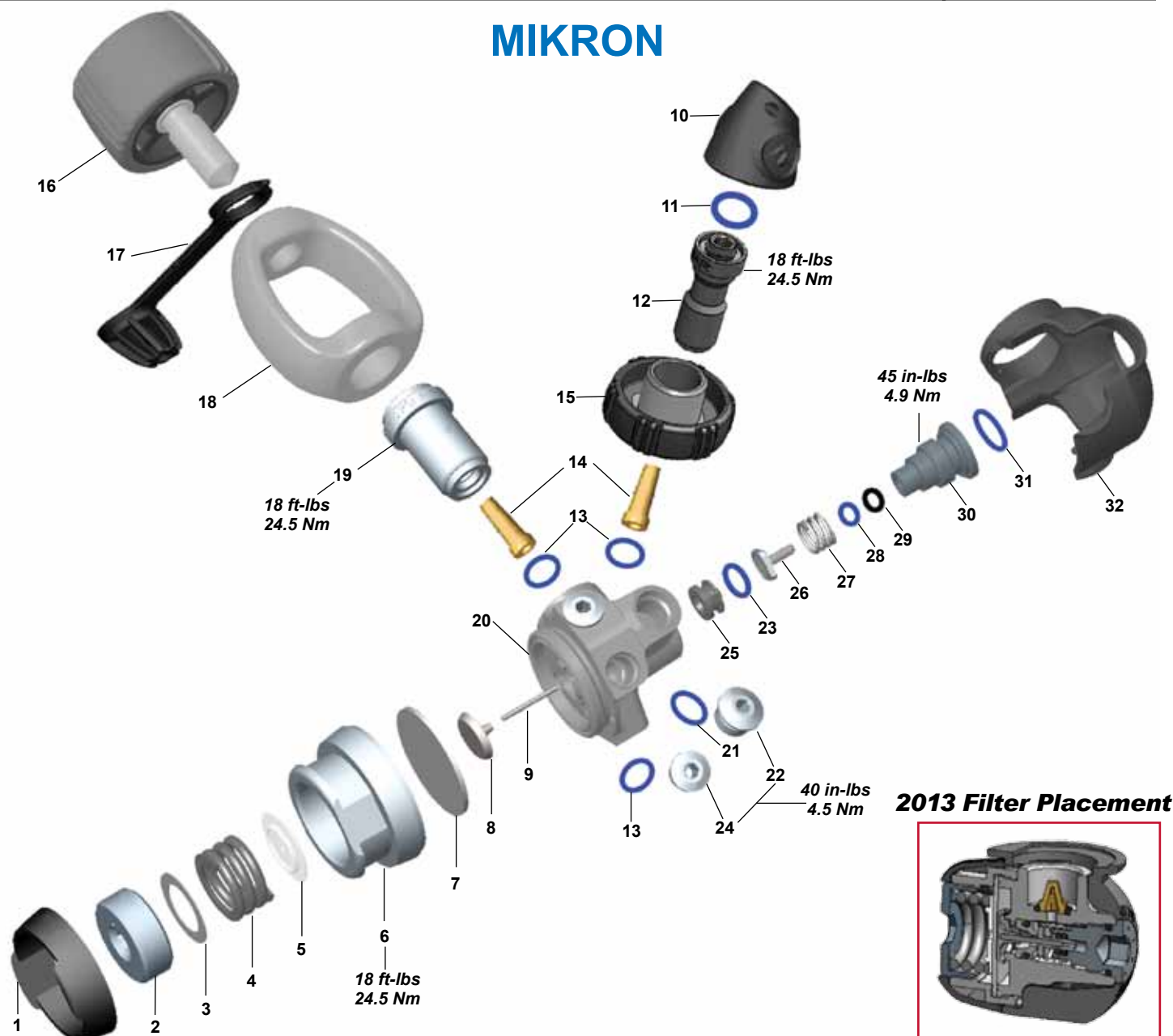


## MIKRON



Key #	Part #	Description
	129022	DIN Adapter Kit, (2013>)
	127865	DIN Adapter Kit, (<2012)
	<b>900014</b>	<b>Overhaul Parts Kit, (Yoke and DIN)</b>
1 ----	127888	Spacer, Black/Blue
----	127878	Spacer, Black/Pink
----	127872	Spacer, Black/Green
----	127837	Spacer, Black/Red
----	127839	Spacer, Vanilla
2 ----	127566	Adjustment Screw
<b>3 ----</b>	<b>127568</b>	<b>Washer</b>
4 ----	127567	Spring
5 ----	127565	Spring Pad
6 ----	127874	Spring Retainer (2-HP Ports)
----	127583	Spring Retainer
<b>7 ----</b>	<b>119159</b>	<b>Diaphragm</b>
8 ----	127563	Pin Support
9 ----	127564	Pin
10 ----	129216	Din ACD Cap
<b>11 ----</b>	<b>820094P</b>	<b>O-ring (20 pk)</b>
12 ----	129251	DIN Fitting, 2013
----	127801	DIN Fitting
<b>13 ----</b>	<b>820011P</b>	<b>O-ring (25 pk)</b>
<b>14 ----</b>	<b>129151</b>	<b>Filter</b>

Key #	Part #	Description
15 ----	127803	DIN Handwheel
16 ----	127805	Yoke Screw
17 ----	124555	Dust Cap
18 ----	127807	Yoke
19 ----	129253	Inlet Fitting, 2013
----	127808	Inlet Fitting
20 ----	129244	Body, 2013
----	127873	Body (2-HP Ports), <2012
----	127844	Body (1-HP Port)
<b>21 ----</b>	<b>820072P</b>	<b>O-ring (20 pk)</b>
22 ----	103137	Plug, HP Port, 7/16"
<b>23 ----</b>	<b>820038P</b>	<b>O-ring (20 pk)</b>
24 ----	122233	Plug, MP Port, 3/8"
25 ----	127585	Crown
<b>26 ----</b>	<b>105940</b>	<b>HP Seat</b>
27 ----	122244	Spring
<b>28 ----</b>	<b>820080P</b>	<b>O-ring (25 pk)</b>
<b>29 ----</b>	<b>119129</b>	<b>Back-up Ring</b>
30 ----	129120	Plug
<b>31 ----</b>	<b>824407P</b>	<b>O-ring (20 pk)</b>
32 ----	127876	Sheath, Black (2-HP Ports)
----	127804	Sheath, Black (1-HP Port)
----	127831	Sheath, Vanilla (1-HP Port)

Part numbers in **BOLD ITALICS** indicate standard overhaul replacement part.