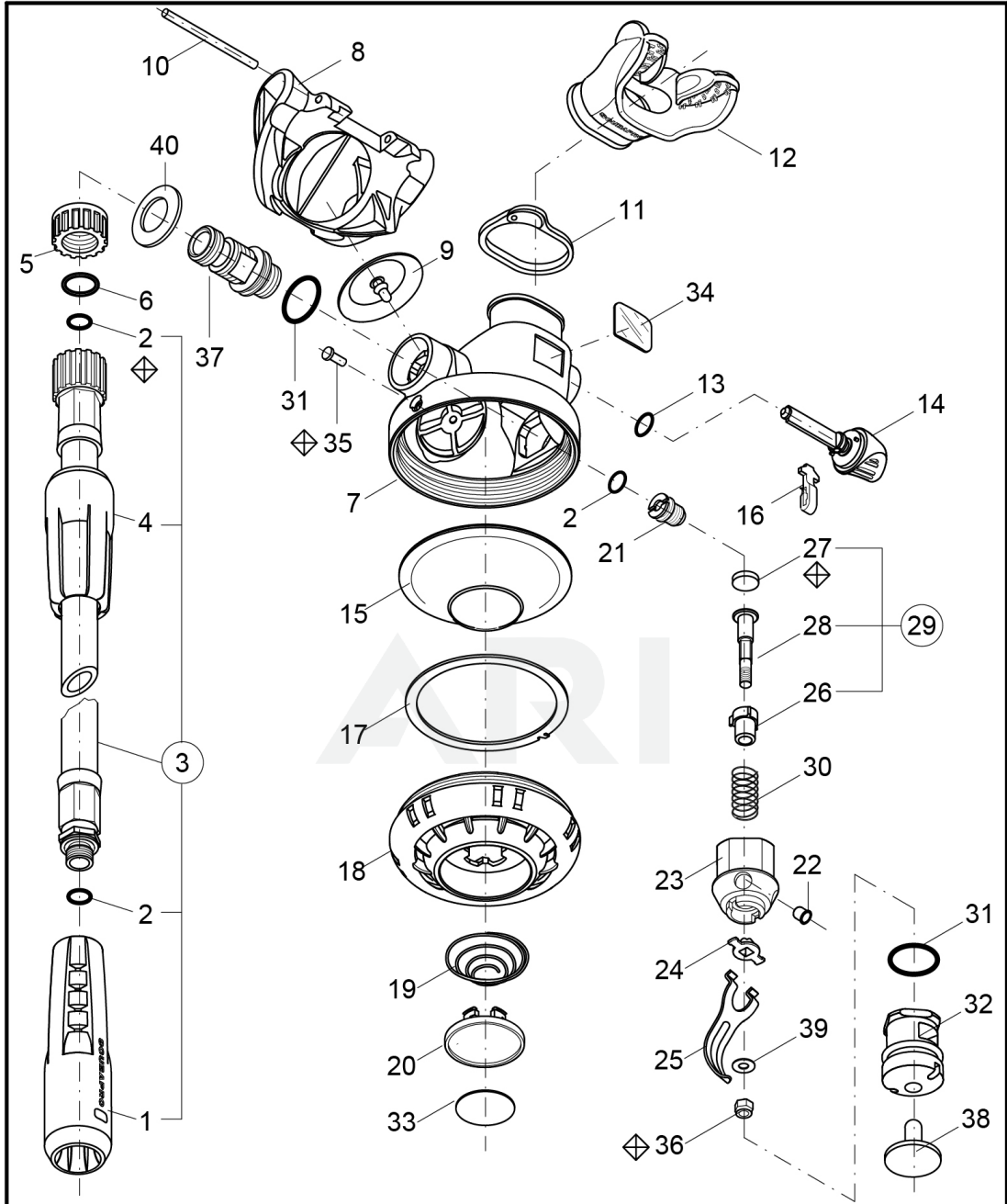


SECOND STAGE AND OCTOPUS 11.331.X00 REV.- CONF.2 07/2022

CONFIDENTIAL, NOT FOR DISCLOSURE TO UNAUTHORIZED ENTITIES OR PERSONNEL



CONFIDENTIAL, NOT FOR DISCLOSURE TO UNAUTHORIZED ENTITIES OR PERSONNEL

<div><> Torque N·m $\begin{smallmatrix} +2 \\ -0 \end{smallmatrix}$</div> <div>[] Torque lb·in $\begin{smallmatrix} +18 \\ -0 \end{smallmatrix}$</div> <div>⬠ Periodical replacement</div> <div>● Octopus version</div>	CAT. NO. 11-331-000 / 11-331-200 (●)		ID 1383
	R195 SECOND STAGE / OCTOPUS		
	Config. 2 07/2022	Rev.- 07/2022	sheet 1 / 1
	Mod. pos.3, pos.3 (●) , pos.4 , pos.12 (were P/N 01309035, 013		

Page design © 2004-2022 by ART Network Services, Inc.

SECOND STAGE AND OCTOPUS 11.331.X00 REV.- CONF.2 07/2022

Ref Number	Part Number	Part Description	Context Notes	Quantity
	11.300.045	SERV. KIT R190 - R380 - R290 - R390 - R295 - R195 - R395 - R095		
1	11.700.010	PROT. SLEEVE BLACK		
2	01.050.132	O-RING	Periodical Replacement	
3	01.309.040	L.P. HOSE cm. 75		
3	01.310.039	L.P. HOSE cm 100	FOR OCTOPUS VERSION	
4	11.332.040	SLEEVE HOSE		
5	11.755.120	NUT, JAM		
6	01.050.347	O-RING		
7	11.331.021P	CASE		
8	11.331.020	EXHAUST TEE		
9	11.250.103P	EXHAUST VALVE		
10	11.190.106	PIN, COVER EXHAUST		
11	01.040.700	CLIP, QUICK REMOV.		
12	01.040.162	MOUTHPIECE		
13	01.050.126	O-RING		
14	11.331.011	FLOW VANE		
15	11.331.012P	DIAPHRAGM		
16	11.380.022	FLOW REDUCER		
17	11.331.104	DIAPHRAGM RING		
18	11.331.036	COVER		
18	11.331.034	COVER, YELLOW	FOR OCTOPUS VERSION	
19	01.020.110	SPRING		
20	11.331.035	PURGE, ANTIENGR.		

Ref Number	Part Number	Part Description	Context Notes	Quantity
21	11.500.109P	ORIFICE		
22	11.300.037	PLUG, HOUSING		
23	11.331.106	HOUSNG		
24	21.080.121	INSERT, HOUSING		
25	11.393.118	LEVER		
26	11.300.027	POPPET		
27	11.108.101	SEAT	Periodical Replacement	
28	11.300.028	STEM		
29	11.300.003	POPPET ASSY		
30	01.020.216	SPRING		
31	01.050.161	O-RING		
32	11.331.103	CASE PLUG		
33	01.006.195	DECAL		
34	01.006.331	DECAL VIVA		
35	01.075.132	PIN, CASE	Periodical Replacement	
36	01.122.101	NUT	Periodical Replacement	
37	11.331.219	VALVE BODY		
38	11.331.102	PLUG		
39	01.060.108	WASHER		
40	11.331.105	WASHER		