

SCUBAPRO

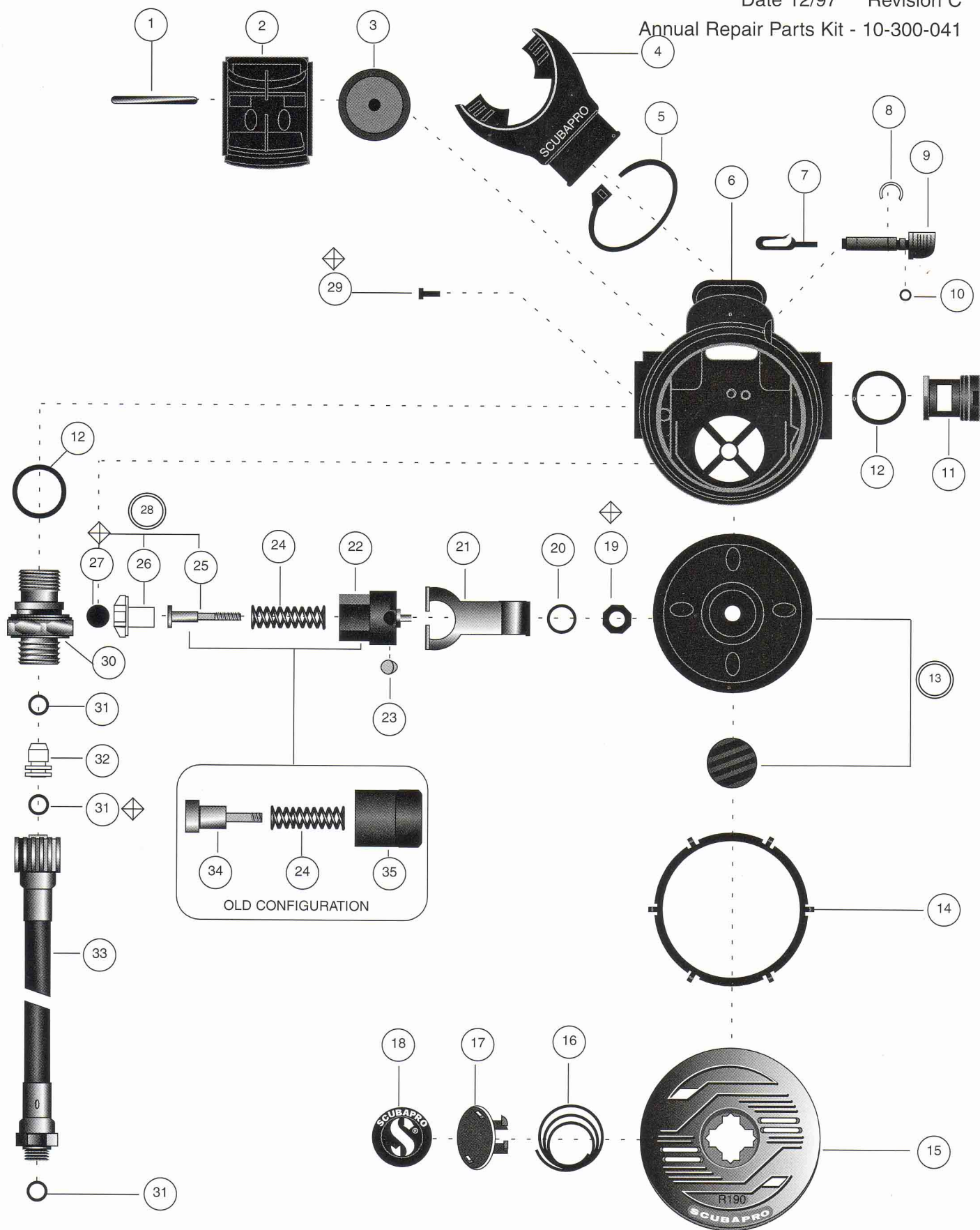
Technical Service Schematic

R190 SECOND STAGES
R190 SECOND STAGES

11-300-000
11-390-000
11-31X-000

Date 12/97 Revision C

Annual Repair Parts Kit - 10-300-041



SCUBAPRO

Technical Service Schematic

R190 SECOND STAGES
R190 SECOND STAGES

11-300-000
11-390-000
11-31X-000

PARTS

| ITEM | QUANTITY | | | | PART NUMBER | DESCRIPTION |
|------|------------|------------|------------|------------|-------------|--|
| 1 | 1 | 1 | 1 | 1 | 11-190-106 | PIN -EXHAUST COVER |
| * 2 | 1 | 1 | | | 11-300-024 | COVER -EXHAUST |
| | | | 1 | | 11-300-034 | COVER -EXHAUST, YELLOW |
| | | | | 1 | 11-316-024 | COVER -EXHAUST -TRANS BLUE |
| 3 | 1 | 1 | 1 | 1 | 11-250-103 | VALVE -EXHAUST |
| ▲ 4 | 1 | 1 | 1 | | 01-040-141 | MOUTHPIECE -BLACK |
| | | | | 1 | 01-040-149 | MOUTHPIECE -CLEAR |
| ▲ 5 | 1 | 1 | 1 | | 01-088-101 | STRAP -MOUTHPIECE -BLACK |
| | | | | 1 | 01-040-025 | CLIP -MOUTHPIECE |
| 6 | 1 | 1 | 1 | | 11-300-021 | CASE -R190 |
| | | | | 1 | 11-316-022 | CASE -TRANS BLUE -R190 |
| * 7 | 1 | 1 | 1 | 1 | 11-300-022 | FLOW REDUCER |
| * 8 | 1 | 1 | 1 | 1 | 01-073-250 | RETAINING CLIP -FLOW VANE |
| 9 | 1 | 1 | 1 | 1 | 11-300-023 | FLOWVANE |
| * 10 | 1 | 1 | 1 | 1 | 01-050-126 | O-RING -FLOWVANE RED |
| 11 | 1 | 1 | 1 | 1 | 11-190-104 | PLUG |
| 12 | 2 | 2 | 2 | 2 | 01-050-160 | O-RING -PLUG -RED |
| * 13 | 1 | 1 | 1 | | 11-300-007 | DIAPHRAGM ASSEMBLY -BLACK W/ DISC |
| | | | | 1 | 11-256-006 | DIAPHRAGM ASSEMBLY -CLEAR W/ DISC |
| 14 | 1 | 1 | 1 | 1 | 11-190-117 | SPACER RING |
| * 15 | 1 | | | | 11-190-121 | COVER -BLACK -R190 |
| | 1 | | | | 11-300-038 | COVER -ANTI-SET -BLACK -R190 |
| | | 1 | | | 11-370-027 | COVER -ANTI-SET -YELLOW -R190 |
| | | | 1 | | 11-316-023 | COVER -ANTI-SET -TRANS BLUE -R190 |
| 16 | 1 | 1 | 1 | 1 | 01-020-110 | PURGE SPRING |
| 17 | 1 | | | | 11-300-025 | PURGE BUTTON |
| | 1 | | 1 | 1 | 11-300-035 | PURGE BUTTON -ANTI-SET |
| 18 | 1 | | | | 01-006-760 | DECAL -R190 -BLUE |
| | | 1 | | | 01-006-761 | DECAL -R190 -RED |
| | | | 1 | | 01-006-764 | DECAL -R190 -YELLOW |
| | | | | 1 | 01-006-489 | DECAL -R190 -TRANS BLUE |
| 19 | 1 | 1 | 1 | 1 | 01-122-101 | NUT -DEMAND VALVE |
| * 20 | 1 | 1 | 1 | 1 | 01-060-108 | WASHER -LEVER |
| * 21 | 1 | 1 | 1 | 1 | 11-190-118 | LEVER |
| 22 | 1 | 1 | 1 | 1 | 11-300-036 | HOUSING |
| 23 | 1 | 1 | 1 | 1 | 11-300-037 | PLUG -HOUSING |
| 24 | 1 | 1 | 1 | 1 | 01-020-216 | SPRING |
| 25 | | | | | 11-300-028 | POPPET STEM |
| 26 | | | | | 11-300-027 | POPPET |
| 27 | | | | | 11-108-101 | SEAT |
| 28 | 1 | 1 | 1 | 1 | 11-300-003 | POPPET ASSEMBLY W/ SEAT |
| 29 | 1 | 1 | 1 | 1 | 01-075-131 | PIN -COVER RETAINING |
| * 30 | 1 | 1 | 1 | 1 | 11-190-119 | DEMAND VALVE BODY |
| * 31 | 3 | 3 | 3 | 3 | 01-050-132 | O-RING -ORIFICE -HOSE FITTINGS -BLUE |
| 32 | 1 | 1 | 1 | 1 | 11-195-110 | ORIFICE -PLASTIC -ORIGINAL |
| * | | | | | 11-109-109 | ORIFICE -BRASS -GOLD PLATE |
| * | | | | | 11-500-109 | ORIFICE -PLASTIC -REPLACEMENT |
| ▲*33 | 1 | | | 1 | 01-309-030 | HOSE ASSEMBLY -29.5" (R190 ONLY) |
| | | 1 | 1 | | 01-315-039 | HOSE ASSEMBLY -39" OCTOPUS (R190 ONLY) |
| 34 | 1 | 1 | 1 | 1 | 11-108-102 | STEM, DEMAND VALVE |
| 35 | 1 | 1 | 1 | 1 | 11-190-105 | HOUSING |
| | 11-390-000 | 11-312-000 | 11-315-000 | 11-317-000 | | |

Date 12/97 Revision C
Annual Repair Parts Kit - 10-300-041

Technical Information:

The Annual Repair Parts Kit may contain o-rings used in the hose assembly. Refer to the separate hose schematic for identification.

11-390-000 R190 2nd Stage, black trim

11-312-000 R190 Octopus, 39" hose, red trim

11-315-000 R190 Octopus, 39" hose, yellow trim

11-317-000 R190 2nd Stage, transparent blue

Special Engineering Notes:

Item 31, o-ring, is used with the original plastic orifice supplied, 11-195-110. The original orifice can be identified by looking at the screwdriver adjustment slot. The slot on the 11-195-110, orifice does not go through the o-ring wall. The gold plated orifice, (11-109-109) or plastic orifice (11-500-109) may be substituted but will require using o-ring 01-050-293.

Item 33 hose assembly may be replaced with any 01-300-XXX hose assembly. See separate hose schematic for details on o-rings and part numbers.

Item 10 is installed before placing the flow vane into the case. The o-ring is installed into the deeper groove nearest the knob of the vane.

Item 7 is installed into the slot on the flowvane nearest to the demand valve body with the open end upwards and towards the mouthpiece. The rounded shoulder faces the inside of the case. Install onto the vane after the vane is installed in the case. It can be put into place from the front of the case.

Item 8 is installed into the shallow groove next to the o-ring. Install from the front of the case after the vane is installed in the case. Tilt the case on edge so the clip rests against the inside wall and push it into the groove.

Item 30, the demand valve body, can be installed for right or left hand use.

Item 23 should always plug the hole in the housing, item 22, facing towards the exhaust valve. See Engineering Bulletin 246 for clarification.

Item 21 lever is installed such that it angles away from the aspirator holes in the housing. The housing is then installed into the case so the aspirator holes point away from the diaphragm and are not visible once installed.

Part number 01-060-107 may be substituted for item 21.

The o-rings colors of those listed for replacement may not match those of the original assembly.

Item 13 diaphragm assembly is not interchangeable with G200/250 series regulators.

Legend:

● NOT SHOWN

○ OPTIONAL ITEM

▲ LIMITED WARRANTY

□ OLDER CONFIGURATION

* SEE NOTE

◇ DYNAMIC O-RING-
REPLACE ANNUALLY

◇ ANNUAL REPLACEMENT

[] TORQUE IN INCH-POUNDS

○ ASSEMBLY