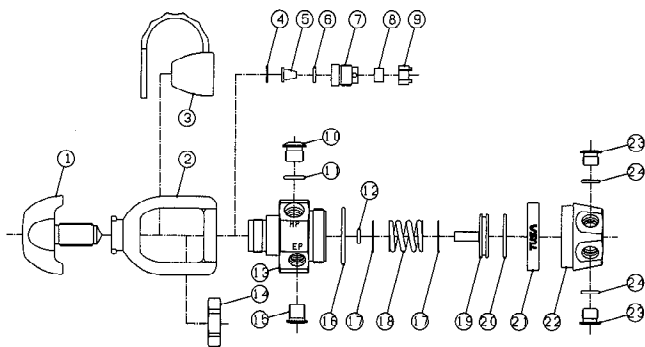


R-100

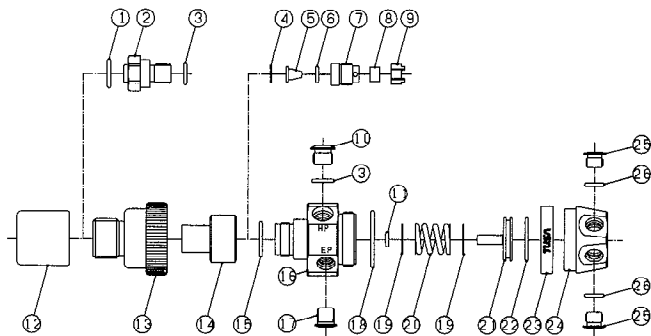


R-100 PLATINA FIRST STAGE

Mar-00

ITEM NO.	PART NO.	DESCRIPTION	REMARKS	PRICE
1	R-200-220	YOKE KNOB ASSY	R-100, R-200.	1.32
2	R-200-190	YOKE	R-100, R-200.	13.53
3	TR-401-38	DUST COVER	R-100, R-200, TR-350/390, TR-400.	0.62
4	R-100-010	RETAINING RING		1.32
5	R-100-020	FILTER		4.62
6	010	O-RING		0.11
7	R-100-030	FILTER RETAINER		2.53
8	R-100-040	H.P. SEAT		1.43
9	R-100-050	H.P. SEAT RETAINER		2.75
10	R-200-180	H.P. PLUG		3.74
11	012	O-RING		0.11
12	009	O-RING		0.11
13	R-100-061	BODY	N/A	
14	R-100-070	YOKE RETAINER		5.06
15	R-100-080	E.P. PLUG		5.61
16	S-30	O-RING	32x2	0.11
17	R-100-090	SPRING ISOLATOR	SET - 0.1mm, 0.2mm, 0.3mm, 0.4mm, 0.5mm. - 1 EACH.	4.18
18	R-100-101	H.P. SPRING		1.76
19	R-100-110	PISTON		14.63
20	020	O-RING		0.11
21	R-100-120	END CAP RING		1.43
22	R-100-130	END CAP		22.44
23	R-200-170	L.P. PLUG		3.74
24	011	O-RING		0.11

R-100-DIN



R-100-DIN PLATINA FIRST STAGE

Mar-00

ITEM NO.	PART NO.	DESCRIPTION	REMARKS	PRICE
1	P-12	O-RING		0.11
2	R-100-140	DIN ADAPTER NIPPLE		
3	012	O-RING		0.11
4	R-100-010	RETAINING RING		1.32
5	R-100-020	FILTER		4.62
6	010	O-RING		0.11
7	R-100-030	FILTER RETAINER		2.53
8	R-100-040	H.P. SEAT		1.43
9	R-100-050	H.P. SEAT RETAINER		2.75
10	R-200-180	H.P. PLUG		3.74
11	009	O-RING		0.11
12	R-200-300	PROTECTIVE CAP	R-100-DIN, R-200-DIN.	
13	R-100-150	DIN ADAPTER HANDWHEEL		
14	R-100-160	DIN ADAPTER BODY		
15	017	O-RING		0.11
16	R-100-061	BODY	N/A	
17	R-100-080	E.P. PLUG		5.61
18	S-30	O-RING	32x2	0.11
19	R-100-090	SPRING ISOLATOR	SET - 0.1mm, 0.2mm, 0.3mm, 0.4mm, 0.5mm. - 1 EACH.	4.18
20	R-100-101	H.P. SPRING		1.76
21	R-100-110	PISTON		14.63
22	020	O-RING		0.11
23	R-100-120	END CAP RING		1.43
24	R-100-130	END CAP		22.44
25	R-200-170	L.P. PLUG		3.74
26	011	O-RING		0.11