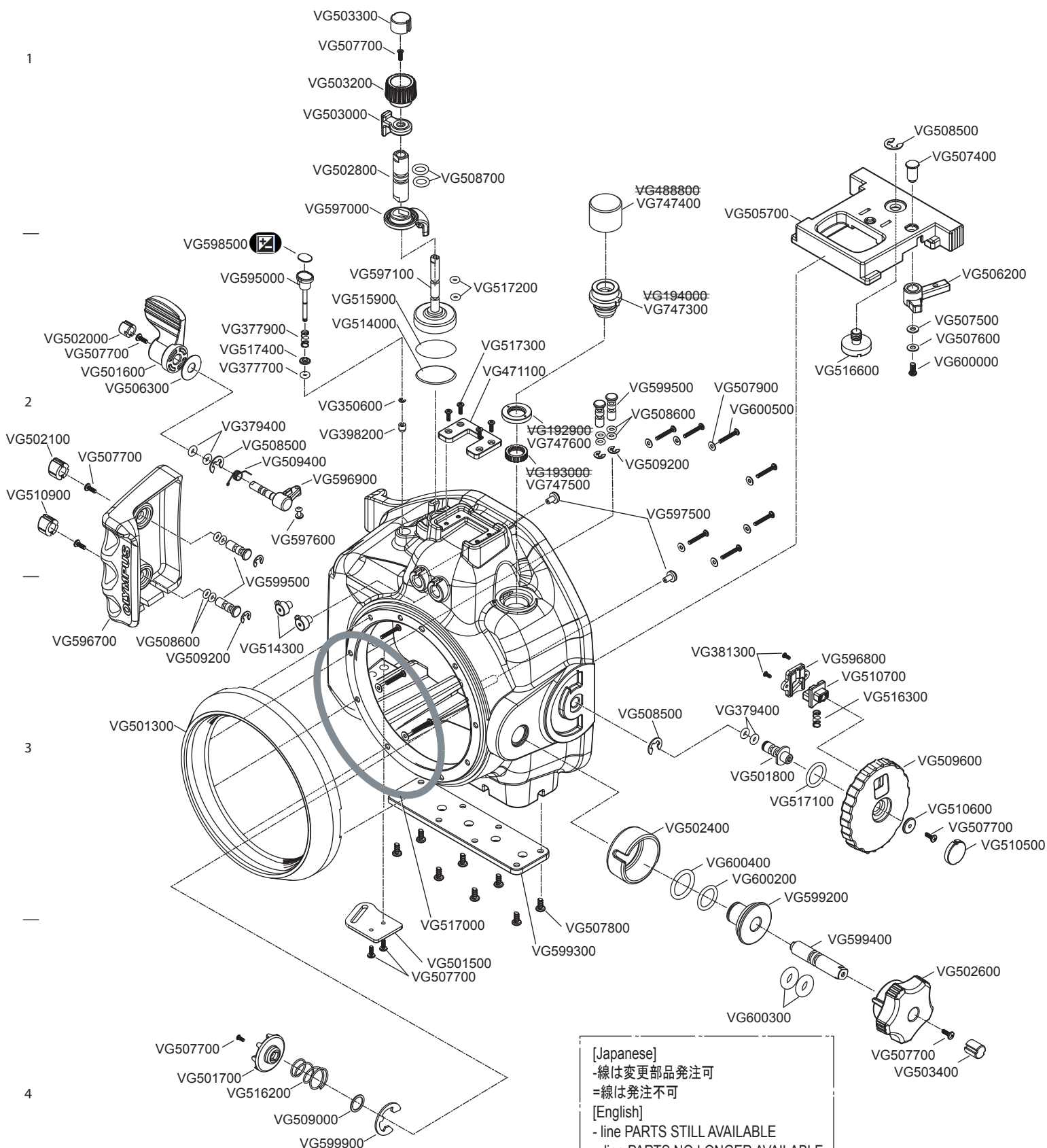


A

B

C

D

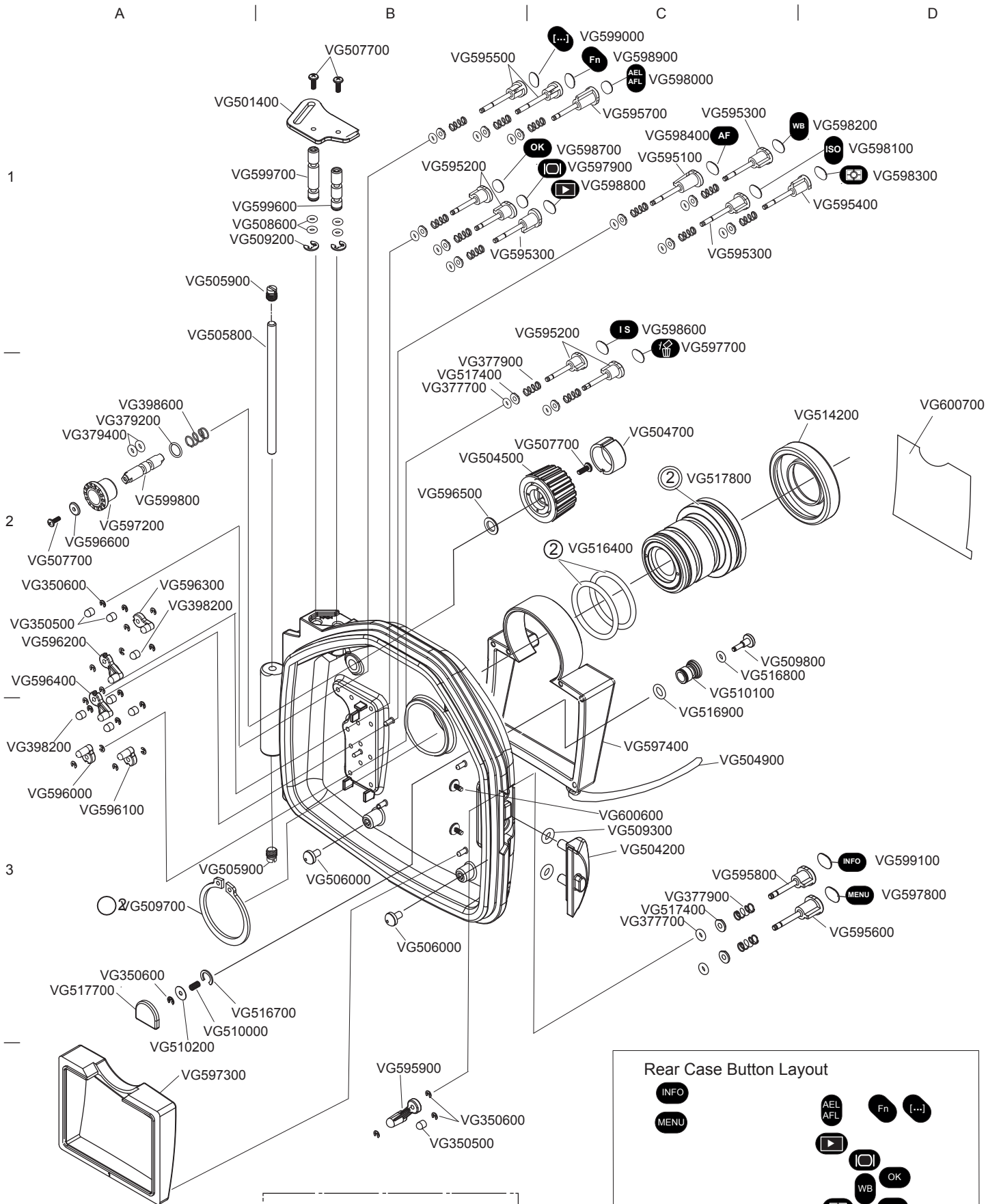


EXPLODED PARTS DIAGRAM

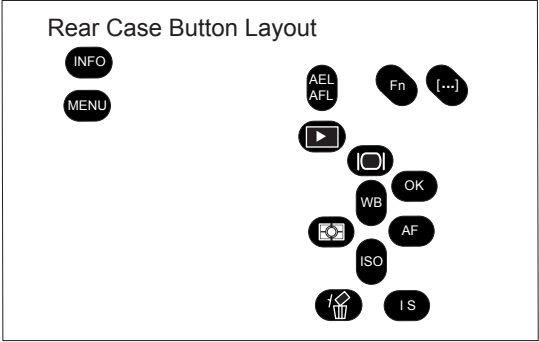
**OLYMPUS**  
CONFIDENTIAL

MODEL	FIG.
PT-E06	1/2
<b>OLYMPUS IMAGING CORP.</b>	

Ver.1/Rev.1  
2010.11



[Japanese]  
 -線は変更部品発注可  
 =線は発注不可  
 [English]  
 - line PARTS STILL AVAILABLE  
 = line PARTS NO LONGER AVAILABLE



EXPLODED PARTS DIAGRAM

MODEL	FIG.
PT-E06	2/2
OLYMPUS IMAGING CORP.	



NEW or EXISTING	PARTS NO	PART NAME	EPD LOCATION	NOTE
-	<del>VG192900</del>	<del>TTL LOCK NUT</del>	1-B2	
-	<del>VG193000</del>	<del>TTL INNER CAP</del>	1-B2	
-	<del>VG194000</del>	<del>TTL CABLE CONNECTOR</del>	1-C2	
-	VG229900	EXTERIOR CAP O-RING	1-C2	
-	VG350500	RUBBER FOOT	2-A2,B4	
-	VG350600	E-RING 1.5MM	1-B2/2-A2,B4,C3	
-	VG377700	O RING O2.31	1-A2/2-B2,C3	
-	VG377900	BUTTON SPRING	1-A2/2-B2,C3	
-	VG379200	WASHER	2-A2	
-	VG379400	O RING O2.8	1-A2,C3/2-A2	
-	VG381300	SCREW M1.7X4.0X3.0PB	1-C3	
-	VG398200	BUTTON FOOT	1-B2/2-A2,A3	
-	VG398600	Spring Mode	2-A2	
-	VG471100	HOT SHOE BASE	1-B2	
-	<del>VG488800</del>	<del>TTL OUTER CAP</del>	1-C1	
-	VG501300	LENS PORT ADAPTOR	1-A3	
-	VG501400	STRAP HOOK 1	2-A1	
-	VG501500	STRAP HOOK 2	1-B4	
-	VG501600	SHUTTER LEVER	1-A2	
-	VG501700	ZOOM GEAR	1-A4	
-	VG501800	LOCK DIAL SHAFT	1-C3	
-	VG502000	SHUTTER SCREW COVER	1-A2	
-	VG502100	SCREW COVER 1	1-A2	
-	VG502400	ZOOM DIAL RING	1-C3	
-	VG502600	ZOOM DIAL	1-D4	
-	VG502800	POWER SHAFT	1-B1	
-	VG503000	POWER SWITCH	1-B1	
-	VG503200	MODE DAIL KNOB	1-B1	
-	VG503300	SCREW COVER MODE DIAL KNOB	1-B1	
-	VG503400	ZOOM DIAL SCREW COVER	1-D4	
-	VG504200	LOCK PIN BLOCK	2-C3	
-	VG504500	CONTROL DIAL	2-B2	
-	VG504700	SCREW COVER CD	2-C2	
-	VG504900	LCD HOOD STRAP	2-C3	
-	VG505700	CAMERA MOUNT	1-C1	
-	VG505800	HINGE SHAFT	2-A1	
-	VG505900	HINGE SCREW	2-A1,A3	
-	VG506000	RUBBER BUSH	2-A3,B3	
-	VG506200	MOUNTING LOCK LEVER	1-D2	
-	VG506300	TEFLON WASHER 1	1-A2	
-	VG507400	MENU LEVER BUTTON	1-D1	
-	VG507500	LOCK WASHER	1-D2	
-	VG507600	TEFLON WASHER 1	1-D2	
-	VG507700	SCREW M2.0X6.0X4.5	1-A2,A4,B1,B4,D3,D4/2-A2,B1,B2	
-	VG507800	SCREW M3.0X6.0X5.5 PB	1-C3	
-	VG507900	WASHER	1-C2	
-	VG508500	E-RING 5MM	1-A2,C3,D1	
-	VG508600	O RING O2.5	1-A3,C2/2-A1	
-	VG508700	O RING O6.07	1-B1	
-	VG509000	SPACER ZOOM	1-B4	
-	VG509200	E-RING 3MM	1-A3,C2/2-A1	
-	VG509300	O RING O3.8	2-C3	
-	VG509400	SHUTTER SPRING	1-A2	
-	VG509600	LOCK DIAL	1-D3	
-	VG509700	RETAINING RING	2-A3	
-	VG509800	VALVE SHAFT	2-C2	
-	VG510000	VALVE SPRING	2-C2	
-	VG510100	VALV E BASE	2-C2	
-	VG510200	VALVE WASHER	2-C2	
-	VG510500	DIAL SCREW COVER	1-D3	
-	VG510600	WASHER DIAL	1-D3	
-	VG510700	DIAL LOCK	1-D3	
-	VG510900	SCREW COVER 2	1-A2	
-	VG514000	M-DDIAL RUBBER	1-B2	
-	VG514200	FINDER HOOD	2-C2	
-	VG514300	FIBER CONNECTOR CAP	1-A3	
-	VG515900	M DIAL RUBBER TAPE	1-B2	
-	VG516200	ZOOM DIAL RING	1-A4	
-	VG516300	SAFETY LOCK SPRING	1-D3	
-	VG516400	O RING O24.41	2-C2	
-	VG516600	TRIPOD SCREW	1-D2	
-	VG516700	C RING S7	2-B3	
-	VG516800	O RING O2.5	2-C2	
-	VG516900	O RING O4.5	2-C2	

- line PARTS STILL AVAILABLE  
 = line PARTS NO LONGER AVAILABLE



NEW or EXISTING	PARTS NO	PART NAME	EPD LOCATION	NOTE
-	VG517000	O RING O110.72	1-B4	
-	VG517100	O RING O12.0	1-C3	
-	VG517200	S-3 O RING	1-B2	
-	VG517300	SCREW M2.0X8.0X4.0	1-B2	
-	VG517400	BUTTON WASHER	1-A2,2-B2,C3	
-	VG517700	VALVE PROTECTOR	2-B3	
-	VG517800	FINDER UNIT	2-C2	
NEW	VG595000	BUTTON 1	1-A2	
NEW	VG595100	BUTTON 2	2-C1	
NEW	VG595200	BUTTON 3	2-B1	
NEW	VG595300	BUTTON 4	2-B1,C1	
NEW	VG595400	BUTTON 5	2-D1	
NEW	VG595500	BUTTON 6	2-B1	
NEW	VG595600	BUTTON 7	2-D3	
NEW	VG595700	BUTTON 8	2-C1	
NEW	VG595800	BUTTON 9	2-C3	
NEW	VG595900	LEVER BUTTON 1	2-C4	
NEW	VG596000	LEVER BUTTON 2	2-A3	
NEW	VG596100	LEVER BUTTON 3	2-A3	
NEW	VG596200	LEVER BUTTON 4	2-A2	
NEW	VG596300	LEVER BUTTON 5	2-A2	
NEW	VG596400	LEVER BUTTON OK	2-A2	
NEW	VG596500	WASHER 1	2-B2	
NEW	VG596600	WASHER 2	2-A2	
NEW	VG596700	HAND GRIP	1-A3	
NEW	VG596800	DIAL LOCK COVER	1-D3	
NEW	VG596900	SHUTTER LEVER SHAFT	1-B2	
NEW	VG597000	POWER LEVER	1-B1	
NEW	VG597100	MODE TURNER	1-B2	
NEW	VG597200	GEAR DIAL	2-A2	
NEW	VG597300	INNER LCD HOOD	2-A4	
NEW	VG597400	LCD OUTER HOOD	2-C3	
NEW	VG597500	RUBBER BUSH 2	1-C2	
NEW	VG597600	RUBBER BUSH SHUTTER	1-B2	
NEW	VG597700	COVER BUTTON DELETE	2-C1	
NEW	VG597800	COVER BUTTON MENU	2-D3	
NEW	VG597900	COVER BUTTON LIVE VIEW	2-C1	
NEW	VG598000	COVER BUTTON AEL/AFL	2-C1	
NEW	VG598100	COVER BUTTON ISO	2-D1	
NEW	VG598200	COVER BUTTON WB	2-D1	
NEW	VG598300	COVER BUTTON METERING	2-D1	
NEW	VG598400	COVER BUTTON AF	2-C1	
NEW	VG598500	COVER BUTTON EXPOSURE	1-B2	
NEW	VG598600	COVER BUTTON IS	2-B1	
NEW	VG598700	COVER BUTTON OK	2-C1	
NEW	VG598800	COVER BUTTON PLAY	2-C1	
NEW	VG598900	COVER BUTTON FN	2-C1	
NEW	VG599000	COVER BUTTON AF FRAME	2-C1	
NEW	VG599100	COVER BUTTON INFO	2-D3	
NEW	VG599200	DIAL BUSH ZOOM	1-C3	
NEW	VG599300	BOTTOM PLATE	1-B4	
NEW	VG599400	ZOOM SHAFT	1-D4	
NEW	VG599500	LINK POLE 1	1-A3,C2	
NEW	VG599600	LINK POLE 2	2-A1	
NEW	VG599700	LINK POLE 3	2-A1	
NEW	VG599800	SHAFT DIAL	2-A2	
NEW	VG599900	E-RING 10MM	1-B4	
NEW	VG600000	SCREW 3.0X6.0X4.5	1-D2	
NEW	VG600200	O RING 11.5	1-C3	
NEW	VG600300	O RING 5.5	1-C4	
NEW	VG600400	O RING 17	1-C3	
NEW	VG600500	SCREW M2.0X14.0X3.0PB	1-C2	
NEW	VG600600	SCREW M2.0X4.5X6.0PB	2-C3	
NEW	VG600700	TFT SHEET	2-D2	
NEW	VG747300	CONNECTOR CABLE	1-C2	
NEW	VG747400	CAP OUTER	1-C1	
NEW	VG747500	CAP INNER	1-B2	
NEW	VG747600	NUT ROCK	1-B2	

- line PARTS STILL AVAILABLE  
 = line PARTS NO LONGER AVAILABLE