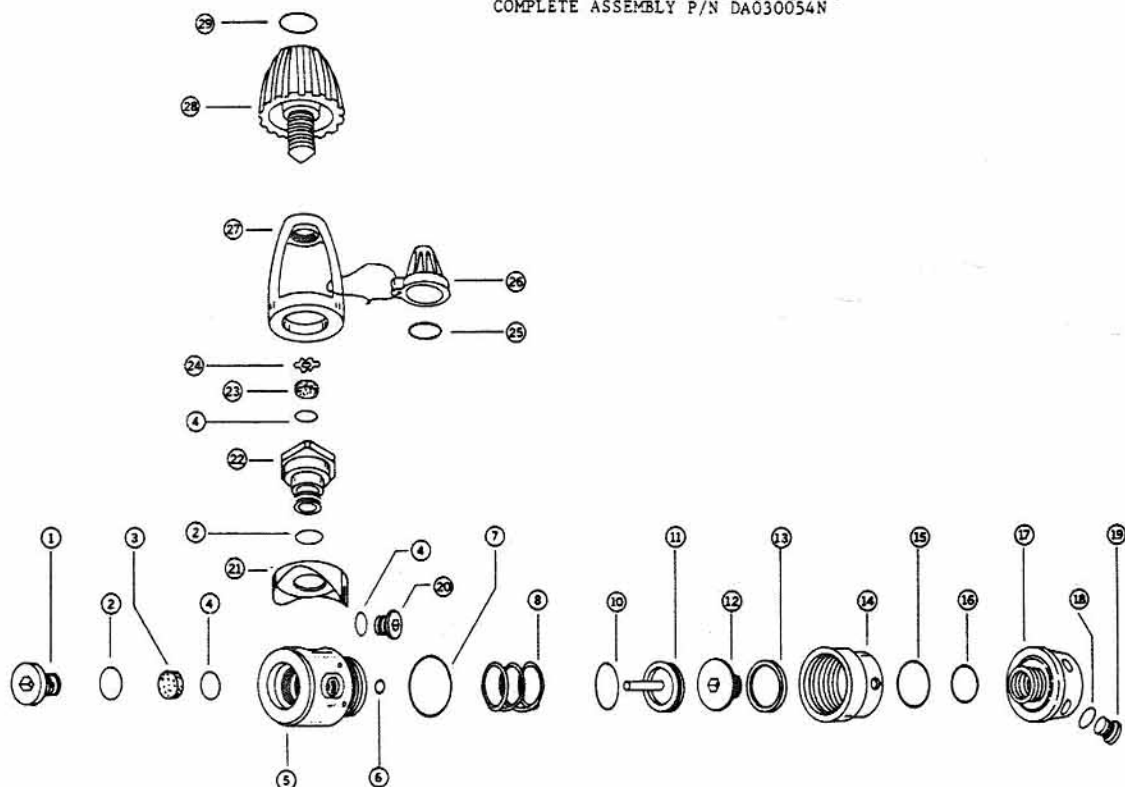


FIRST STAGE REGULATOR PARTS LIST
COMPLETE ASSEMBLY P/N DA030054N



PART NO.	DESCRIPTION
1. DC030060N	RET HP SEAT 500
2. DC010014N	O RING
3. DC030059N	SEAT HP 500
4. DC010012N	O RING
5. DC030161N	BODY 500 DX
6. DC010010N	O RING
7. DC010024N	O RING
8. DC030066N	SPRING HP
10. DC010020N	O RING
11. DC030007N	PISTON - LG
12. DC030042N	RET SWIVEL DLX
13. DC030170N	WASHER, NYLON
14. DC030041N	CAP END DLX
15. DC010023N	O RING

PART NO.	DESCRIPTION
16. DC010016N	O RING
17. DC030040N	CAP SWIVEL/DLX
18. DC010011N	O RING
19. DC030044N	PLUG 3/8-24
20. DC030067N	PLUG 7/16-20
21. DC030065N	SADDLE
22. DC030047N	RET-YOKE LONG
23. DC030049N	FILTER
24. DC030050N	RET. FILTER
25. DC010027N	O RING
26. DC030038N	COVER DUST
27. DC030062N	YOKE
28. DC030064N	YOKE KNOB PLASTIC
29. DC030207N	LOGO DECAL
30. DC030154N	LOCKUP SHIM (Not Shown)

A) REPAIR & MAINTENANCE KIT P/N DA030279N INCLUDES
ONE EACH OF ITEM NO. 3,6,7,9,10,13,15,16,23,24, & 30;

B) FIRST STAGE REGULATOR WITH 300 BAR DIN FITTING
P/N DA030059N

C) 300 BAR DIN FITTING ONLY - P/N 2006

NOTE: ITEM NO. 30 - MYLAR LOCK UP SHIM IS NOT SHOWN AS IT IS USED ONLY AS REQUIRED FOR REPAIR. APPROXIMATE INCREASE IN PRESSURE IS 5 LBS. PER SHIM. DO NOT USE MORE THAN 3 SHIMS PER UNIT, IF MORE IS REQUIRED TO OBTAIN DESIRED INTERMEDIATE PRESSURE, THEN CHANGE THE HP SPRING.