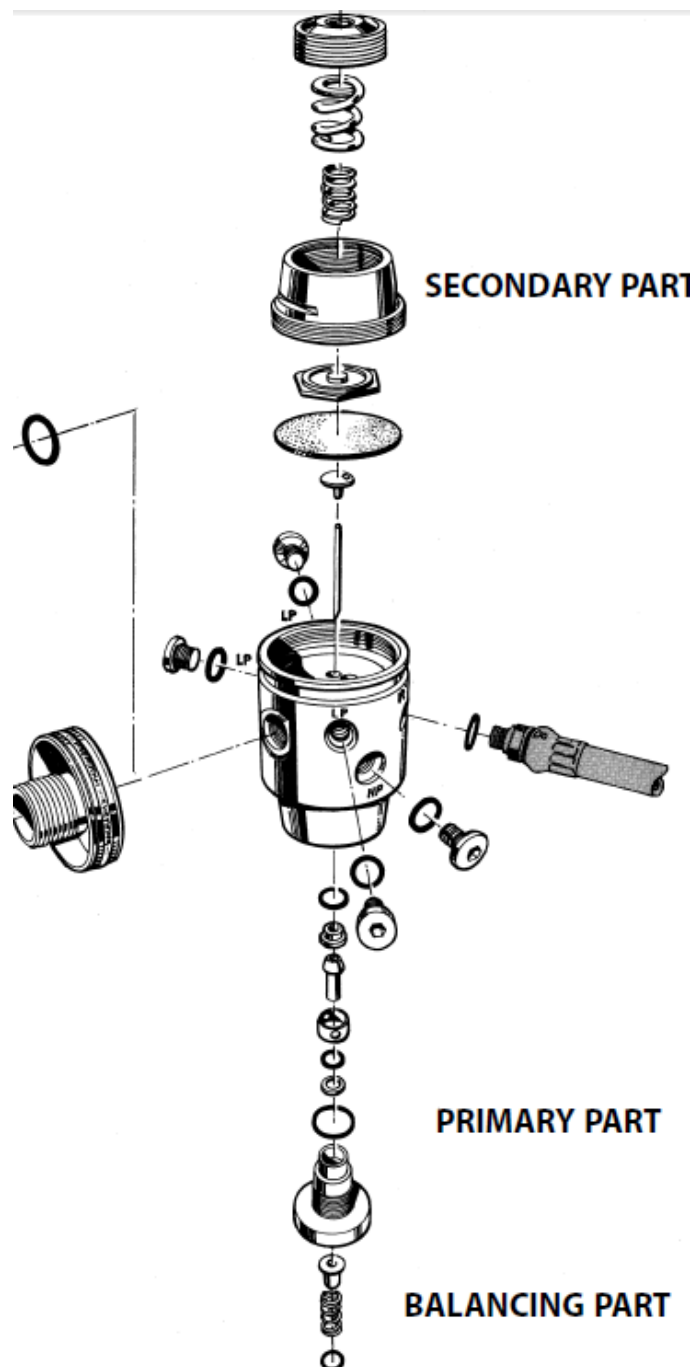


**Poseidon 2960**

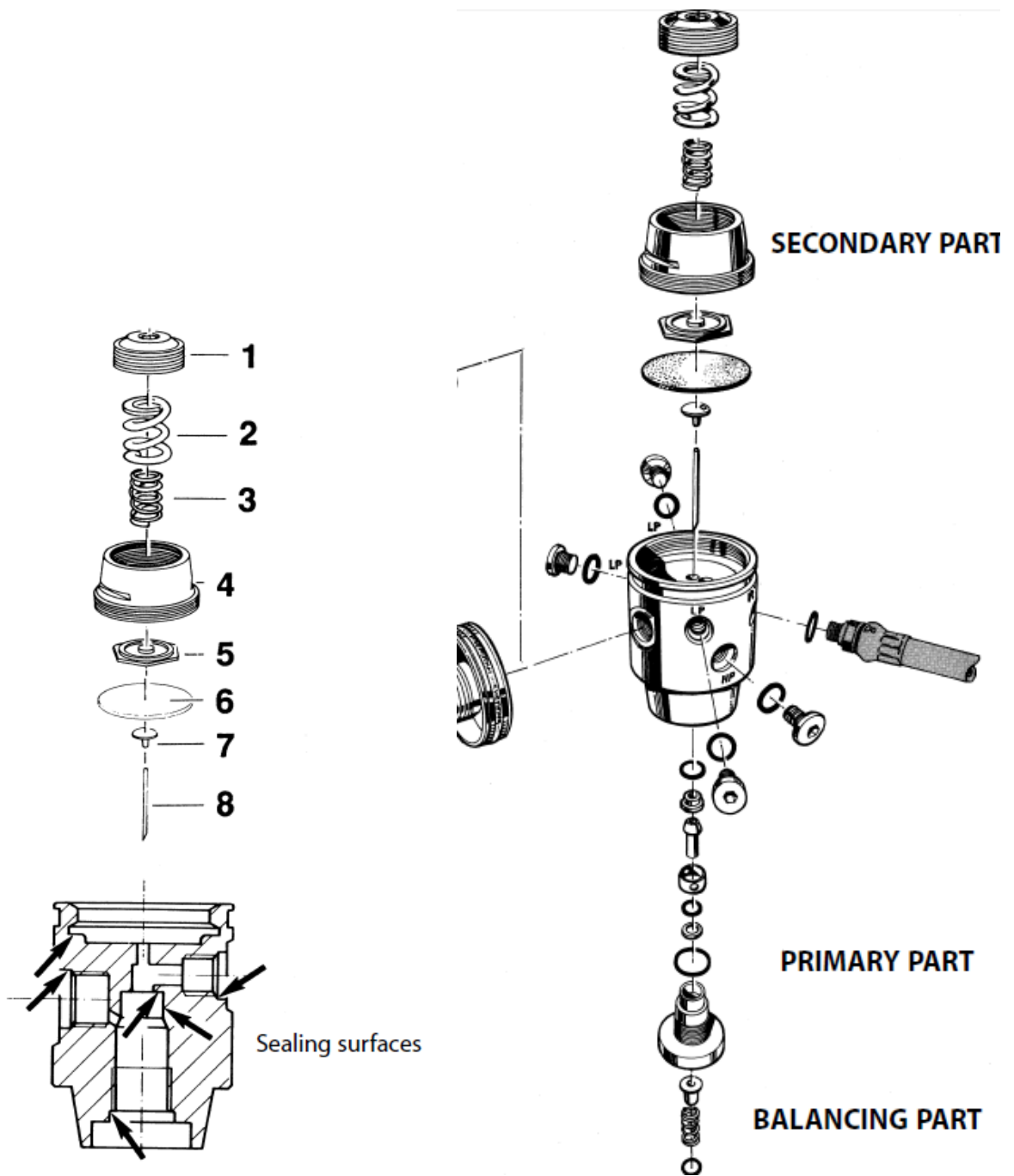
**1<sup>st</sup> Stage 3580**

(only significant differences from regs at right are port flats ground into body, and a restricted airflow LP port intended for BCD or drysuit marked "S")

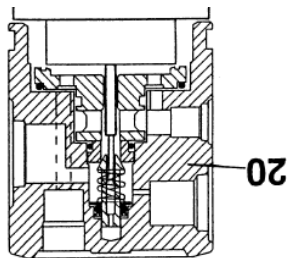
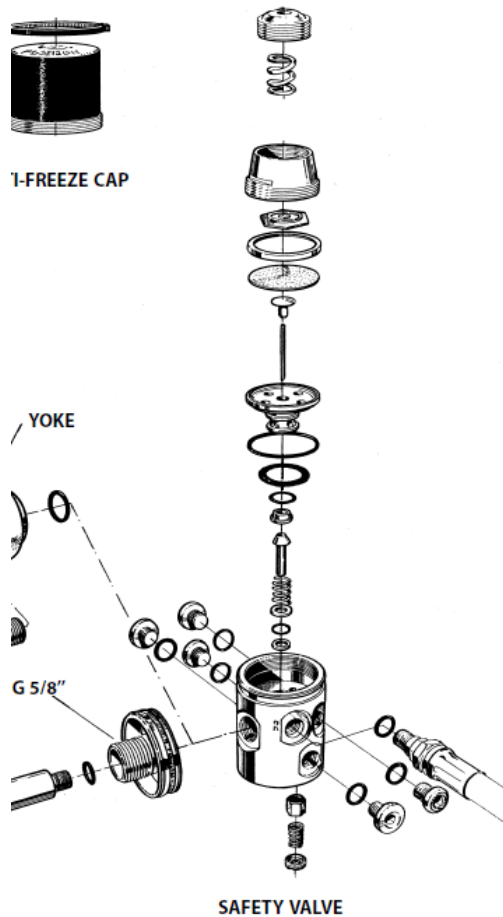


**Poseidon 2960**

**1<sup>st</sup> Stage 2962**



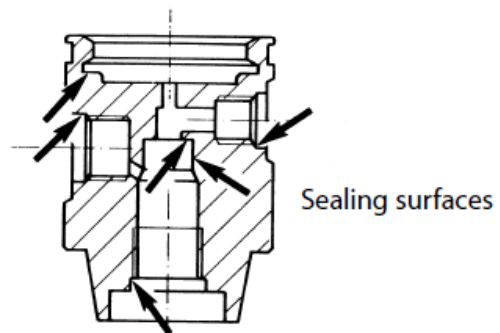
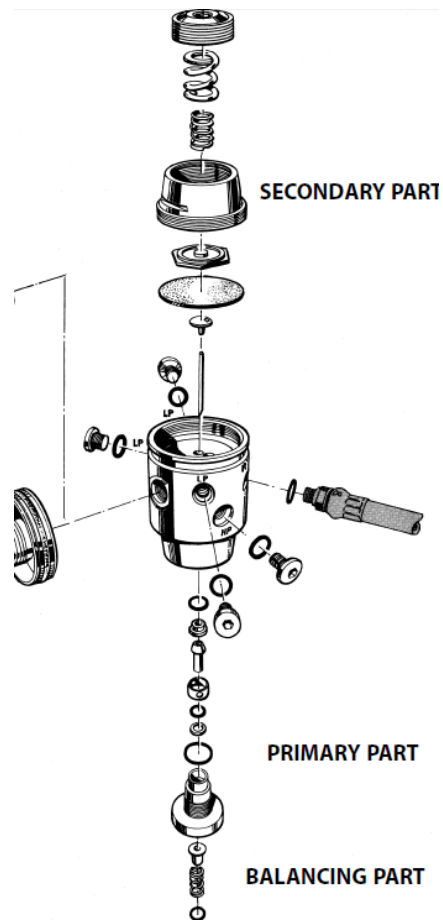
2962, 2801, 2808, 3257, 3580, 3585



### Poseidon 3960

#### 1<sup>st</sup> Stage

- Balancing chamber is part of body
- Body has separate safety valve in addition to hose overpressure valve



### Poseidon 2960

#### 1<sup>st</sup> Stage 2962, 3580

- Balancing Chamber separate part screwed in from below
- Overpressure valve in LP hose