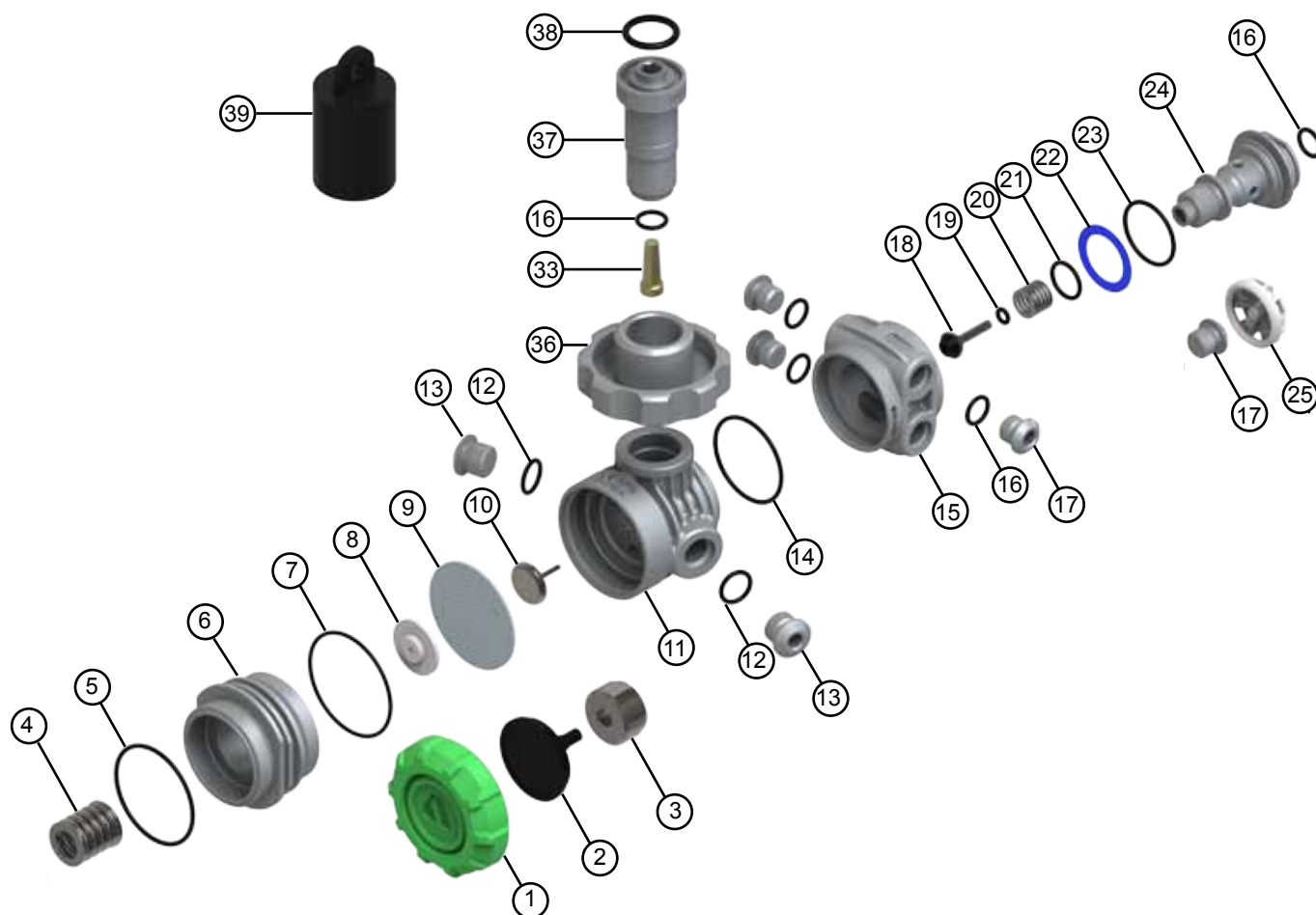


This exploded view diagram illustrates the assembly of a mechanical component, likely a pump or valve. The parts are numbered 1 through 35. The assembly process begins with the base (1) and the main body (2). The central shaft (3) is inserted into the body, followed by the impeller (4) and the impeller nut (5). The impeller is secured with the impeller lock washer (6) and the impeller lock nut (7). The impeller is then secured with the impeller lock washer (8) and the impeller lock nut (9). The impeller is then secured with the impeller lock washer (10) and the impeller lock nut (11). The impeller is then secured with the impeller lock washer (12) and the impeller lock nut (13). The impeller is then secured with the impeller lock washer (14) and the impeller lock nut (15). The impeller is then secured with the impeller lock washer (16) and the impeller lock nut (17). The impeller is then secured with the impeller lock washer (18) and the impeller lock nut (19). The impeller is then secured with the impeller lock washer (20) and the impeller lock nut (21). The impeller is then secured with the impeller lock washer (22) and the impeller lock nut (23). The impeller is then secured with the impeller lock washer (24) and the impeller lock nut (25). The impeller is then secured with the impeller lock washer (26) and the impeller lock nut (27). The impeller is then secured with the impeller lock washer (28) and the impeller lock nut (29). The impeller is then secured with the impeller lock washer (30) and the impeller lock nut (31). The impeller is then secured with the impeller lock washer (32) and the impeller lock nut (33). The impeller is then secured with the impeller lock washer (34) and the impeller lock nut (35).

| | | | | | |
|----|---------------|-------------------------------|----|---------------|-----------------------------|
| 1 | AP2010 | Environmental End Cap | 19 | AP1299 | O Ring |
| 2 | AP1483 | Pressure Transmitter | 20 | AP1415 | Spring |
| 3 | AP1474 | Spring Adjuster | 21 | AP1410 | O Ring |
| 4 | AP1475 | Spring | 22 | AP1414 | Thrust Washer |
| 5 | AP2013 | O Ring | 23 | AP1438 | O Ring |
| 6 | AP2009S | Diaphragm Clamp, Finned Satin | 24 | AP2011S | Turret Bolt 3/8 5th Port |
| 7 | AP7520 | O Ring | 25 | AP2012W | Bumper, 5th Port, White |
| 8 | AP1476 | Spring Carrier | 26 | AP1403/S | Yoke Clamp, Satin |
| 9 | AP1478 | Diaphragm | 27 | AP1407/S | Yoke Clamp Connector, Satin |
| 10 | AP1479 | Valve Lifter | 28 | AP1406 | Filter |
| 11 | AP2007SE | Body, Finned, Satin | 29 | AP1166 | O Ring |
| 12 | AP1445 | O Ring | 30 | AP1404 | Dust Cap |
| 13 | AP1413S | 7/16" HP Blanking Plug Satin | 31 | AP7312SW | Yoke Knob, Satin White |
| 14 | AP1420 | O Ring | 32 | AP7310S | Handwheel, Satin |
| 15 | AP2008SE | Turret, Finned, Satin | 33 | AP1472 | Conical Filter |
| 16 | AP1409 | O Ring | 34 | AP1471/S | Din Connector, Satin |
| 17 | AP1408S | 3/8" MP Blanking Plug Satin | 35 | AP6202 | Din Dust Cap |
| 18 | AP1419 | HP Valve | | | |

Exploded Parts Diagram

NP0063H M26 Nitrox Version



All items in bold italics to be replaced when servicing. Service kit AP0241

| | | | | | |
|----|---------------|-------------------------------|----|---------------|------------------------------|
| 1 | AP2010G | Environmental End Cap Nitrox | 16 | AP1409 | <i>O Ring</i> |
| 2 | AP1483 | Pressure Transmitter | 17 | AP1408S | 3/8" MP Blanking Plug Satin |
| 3 | AP1474 | Spring Adjuster | 18 | AP1419 | <i>HP Valve</i> |
| 4 | AP1475 | Spring | 19 | AP1299 | <i>O Ring</i> |
| 5 | AP2013 | <i>O Ring</i> | 20 | AP1415 | Spring |
| 6 | AP2009S | Diaphragm Clamp, Finned Satin | 21 | AP1410 | <i>O Ring</i> |
| 7 | AP7520 | <i>O Ring</i> | 22 | AP1414 | Thrust Washer |
| 8 | AP1476 | Spring Carrier | 23 | AP1438 | <i>O Ring</i> |
| 9 | AP1478 | <i>Diaphragm</i> | 24 | AP2011S | Turret Bolt 3/8 5th Port |
| 10 | AP1479 | Valve Lifter | 25 | AP2012W | Bumper, 5th Port, White |
| 11 | AP2007SE | Body, Finned, Satin | 33 | AP1472 | <i>Conical Filter</i> |
| 12 | AP1445 | <i>O Ring</i> | 36 | AP1870 | Nitrox Handwheel |
| 13 | AP1413S | 7/16" HP Blanking Plug Satin | 37 | AP1871 | Nitrox Din Connector |
| 14 | AP1420 | <i>O Ring</i> | 38 | AP1405 | <i>O Ring</i> |
| 15 | AP2008SE | Turret, Finned, Satin | 39 | AP1270 | 12716 25mm Moss Cap |