

Instruction Manual and Replacement Parts List

Junior II

High Pressure Air Compressor Units

JR II-E1

JR II-E3



August 6, 2014

2nd Edition, Rev. 0 Chg. 13
© Bauer Compressors, Inc.

MNL-0252

This information is believed to be accurate by Bauer Compressors, Inc., as of it's date of publication, but Bauer offers NO WARRANTY regarding the accuracy, or continuing accuracy, of the information set forth herein. Bauer shall not be liable for inaccuracies in, or consequences resulting from, your use of this information. All information supplied is in connection with sales of Bauer's products, and is thus subject to Bauer's standard terms and conditions of sale. Bauer reserves the right to change this information and has no obligation to update these materials. This information is © 2009 Bauer Compressors, Inc., and Bauer reserves to itself all rights to this publication. Bauer's customers have no right to reproduce, rewrite, modify, license or permit anyone else's use of this information, without the express written permission of Bauer Compressors, Inc.



WARNING

This Instruction Manual and Replacement Parts List contains safety information and instructions for the Junior II High Pressure Air Compressor Units.

You must read, understand and follow all safety precautions and instructions.

2nd Edition; March 1, 2005

Rev	Chg	Date	Notes	Auth
0	1	Sept. 9, 2005	Changed Intermediate Separator to P/N 081800	JD
0	2	Dec. 9, 2005	Changed Manual Condensate Drain Valve PN to 073793	JD
0	3	June 21, 2006	Corrected P/N's and index for Figure 3-14	JD
0	4	Nov. 27, 2006	Corrections to Cartridge Replacement Interval Chart & Table	JD
0	5	April 24, 2007	Updated compressor block to Parts List TJ-4/7 from BKM	JD
0	6	June 11, 2007	Removed JR II G model, now within MNL-0445	JD
0	7	May 20, 2008	Change to Air Intake Filter Maintenance Procedure	CLA
0	8	June 9, 2008	Updated Replacement Parts List for P0 Purification System. Added 500 Operating Hour Replacement of Air Intake Filter. Changed Valve Removal Tool P/N 00455 to 082048 Updated to January 2008 BKM Parts List	CLA
0	9	Oct. 6, 2008	Added Parts List to Drive Section	SS
0	10	April 30, 2009	Added Safety Valve & Gasket to Separator in Block Chapter	SS
0	11	Aug. 26, 2009	Updated Drive Part Numbers	SS
0	12	Apr. 13, 2012	Updated Compressor Block Chapter	SS
0	13	Aug. 6, 2014	Added Switch Over Device (SOD)	SS

Table of Contents

CHAPTER 1: - - - - - INTRODUCTION

1.1	HOW TO USE THIS MANUAL	1
1.1.1	Manual Safety Notices	1
1.2	HOW TO USE THE REPLACEMENT PARTS LIST	2
1.3	HOW TO USE THE APPENDIX	3
1.4	COMPRESSOR UNIT PURPOSE	4
1.5	DESIGN	4
1.6	AIR FLOW DIAGRAM	7
1.7	TECHNICAL SPECIFICATIONS	7
1.8	JUNIOR II COMPRESSOR BLOCK	8
1.8.1	JR II-E1/115	8
1.8.1.1	Drive Specifications.....	8
1.8.2	JR II-E1	8
1.8.2.1	Drive Specifications.....	8
1.8.3	JR II-E3	9
1.8.3.1	Drive Specifications.....	9

CHAPTER 2: - - - - - OPERATION

2.1	PREPARATION FOR OPERATION	10
2.2	UNITS WITH THREE PHASE MOTOR	10
2.3	UNITS WITH A GASOLINE ENGINE	10
2.4	STARTING THE UNIT.	10
2.4.1	Units with electric drive motor.....	10
2.4.2	Units with a Gasoline Engine.....	10
2.4.3	All Units	11
2.5	FILLING PROCEDURE	11
2.5.1	General Procedures	11
2.5.2	Bottle Filling Procedures.....	12
2.5.3	Connecting to the Air Storage Bottle	12
2.5.4	Filling the Bottle.....	13
2.5.5	Removing the Bottle.....	13
2.6	SHUT-DOWN PROCEDURES	13
2.6.1	Units with Electrical Motor.....	13
2.6.2	Units with a Gasoline Engine.....	13
2.6.3	All Units	13

CHAPTER 3: - - - - - JUNIOR II COMPRESSOR

3.1	LUBRICATION	14
3.1.1	Oil Level Check	14
3.1.2	Type of Oil	14
3.1.3	Oil Changes	15
3.1.3.1	Oil Change Procedures	15
3.2	INTAKE FILTER	15
3.2.1	Description	15

3.2.2	Maintenance	15
3.2.3	Telescope Intake Tube.....	16
3.2.4	Intermediate Separator.....	16
3.2.5	Maintenance	16
3.3	COMPRESSOR VALVES.....	17
3.3.1	Description	17
3.3.2	Initial Operational Check	17
3.3.3	Changing the Valves.....	17
3.3.4	Changing the 1st Stage Valves	18
3.3.5	Changing the 2nd Stage Valves.....	19
3.3.6	Changing the 3rd Stage Valves	20
3.4	REPAIR AND TROUBLESHOOTING	21
3.4.1	General Repair Instructions.....	21
3.4.2	Troubleshooting Tables.....	22
3.4.2.1	Electric Motor	22
3.4.2.2	Gasoline Engine.....	22
3.4.2.3	Compressor Block.....	23
3.5	REPLACEMENT PARTS LIST	25

CHAPTER 4:- - - - -JR II MAINTENANCE SCHEDULE

4.1	MAINTENANCE RECORD.....	38
4.2	MAINTENANCE SCHEDULE.....	38
4.2.1	After the First 25 Operating Hours.....	38
4.2.2	Every 125 Operating Hours.....	39
4.2.3	Every 2000 Operating Hours or Biennially.....	39
4.2.4	Annually or As Required.....	40
4.2.5	After Repair Work.....	40
4.2.6	After Storage and Preservation.....	42

CHAPTER 5:--PURIFICATION SYSTEM

5.1	INTRODUCTION.....	43
5.1.1	General Purification System Procedures	43
5.1.2	Chamber Safety Bore	43
5.1.3	Manual Condensate Drainage.....	44
5.1.4	Model, Serial Number and Part Number Identification	44
5.1.4.1	Compressor Data Plate.....	44
5.1.4.2	Purification System Data Plate	45
5.1.4.3	Cartridge Installation Data Plate	45
5.1.5	Breathing Air Purification System Configurations	45
5.1.6	Industrial Purification System Configurations	46
5.1.7	Cartridge Operating Life	46
5.1.7.1	Calculating the Maximum Cartridge Operating Hours.....	47
5.1.7.2	Calculating the Adjusted Cartridge Operating Hours.....	47
5.1.7.3	Air Purification Cartridge Operating Hours Form.....	49
5.2	P0 PURIFICATION SYSTEM	50
5.2.1	Description	50
5.2.2	CO Indicator (optional)	51
5.2.2.1	Visual CO & Moisture Indicator	51
5.2.3	Maintenance	52
5.2.3.1	Replacing the Cartridge	52
5.2.3.2	Chamber Replacement Interval	52

5.2.3.3	CO & Moisture Indicator	53
5.2.4	Replacement Parts List	55
5.3	DUAL PRESSURE CONTROL ASSEMBLY	59
5.3.1	General	59
5.3.2	Replacement Parts	60

CHAPTER 6: - - - - - MISCELLANEOUS

6.1	SAFETY VALVES	61
6.1.1	Description	61
6.1.2	Maintenance	61
6.1.2.1	Checking Function	61
6.1.2.2	Checking Blow Off Pressure	61
6.2	PRESSURE GAUGE	61
6.2.1	Maintenance	61
6.3	COOLING SYSTEM	62
6.3.1	General	62
6.4	COMPRESSOR DRIVE SYSTEM	62
6.4.1	Description	62
6.4.2	Checking the Drive Belt	62
6.4.3	V-belt Tension Adjustment	63
6.4.4	Electric Motor Maintenance	63
6.5	ELECTRICAL SYSTEM	63
6.5.1	Description	63
6.5.2	Drive Motor	63
6.6	JR II ELECTRIC DRIVE REPLACEMENT PARTS	64

CHAPTER 7: - - - - - APPENDIX

7.1	SAFETY	65
7.1.1	General Safety Precautions	65
7.1.2	Safety Warning Labels	67
7.2	INSTALLATION	68
7.2.1	Corrosion Resistance	68
7.2.2	Outdoor Location	68
7.2.3	Indoor Location	68
7.2.3.1	Electrical Installation	68
7.3	STORAGE AND PRESERVATION	69
7.3.1	Storage	69
7.3.2	Preservation	70
7.3.2.1	Preparation for Preservation	70
7.3.2.2	Preserving the Compressor	70
7.3.2.3	Preserving the Motor or Engine	70
7.3.2.4	Preventive Maintenance During Storage	70
7.3.2.5	Reactivating the Compressor Unit	71
7.4	TABLES AND REFERENCE DATA	72
7.4.1	Tightening Torque Values	72
7.4.2	Pipe Connections (swivel nuts)	72

List of Figures

CHAPTER 1:- - - - - INTRODUCTION

Figure 1-1	Compressor Identification Label	2
Figure 1-2	Junior II with Single Phase Electric Motor.....	5
Figure 1-3	Junior II V-Belt Side.....	6
Figure 1-4	Internal Air Flow Diagram	7

CHAPTER 2:- - - - - OPERATION

Figure 2-1	Air Storage Bottle Valve Operating Sequence	12
------------	---	----

CHAPTER 3:- - - - - JUNIOR II COMPRESSOR

Figure 3-1	Oil Dipstick Markings	14
Figure 3-2	Intake Filter.....	15
Figure 3-3	Intermediate Separator.....	16
Figure 3-4	Valve Function.....	17
Figure 3-5	1st Stage Plate Valve	17
Figure 3-6	1st Stage Valve Head.....	18
Figure 3-7	2nd Stage Valve Head	19
Figure 3-8	3rd Stage Valve Head	20
Figure 3-9	Removing the 3rd Stage Valves	21
Figure 3-10	Crankcase, Driving Gear and Fan.....	25
Figure 3-11	Pistons and Cylinders	27
Figure 3-12	Valve Heads and Valves.....	29
Figure 3-13	Cooler	31
Figure 3-14	Intake Filter and Intermediate Separator	33
Figure 3-15	Frame with Accessories.....	35
Figure 3-16	Special Tools	37

CHAPTER 4:- - - - - -JR II MAINTENANCE SCHEDULE

There are no Figures in this Chapter

CHAPTER 5:- - - - - PURIFICATION SYSTEM

Figure 5-1	Cartridge Safety Venting	44
Figure 5-2	P0 & P31 Safety Venting.....	44
Figure 5-3	Purification System Data Plates (typical).....	44
Figure 5-4	Correction Factor for Cartridge Operating Hours	48
Figure 5-5	Example Record of Adjusted Operating Hours	48
Figure 5-6	P0 Purification Chamber.....	50
Figure 5-7	P0 Purification System Cross Section	51
Figure 5-8	CO & Moisture Indicator.....	52
Figure 5-9	Moisture Indicator	53

Figure 5-10	P0 Purification System Parts List.....	55
Figure 5-11	Pressure Maintaining Valve	57
Figure 5-12	CO & Moisture Indicator.....	58
Figure 5-13	Dual Pressure Assembly.....	59
Figure 5-14	Dual Pressure Assembly.....	60

CHAPTER 6: - - - - - MISCELLANEOUS

Figure 6-1	Gauges	61
Figure 6-2	Final Pressure Safety Valve.....	61
Figure 6-3	Checking V-belt Tension.....	62
Figure 6-4	V-belt Pulley Alignment.....	62
Figure 6-5	Electric Motor Adjustment.....	63
Figure 6-6	JR II, Electric Drive.....	64

CHAPTER 7: - - - - - APPENDIX

Figure 7-1	Incoming Power Wiring Label.....	69
------------	----------------------------------	----

CHAPTER 1: INTRODUCTION

1.1 How To Use This Manual

This manual contains the operating and maintenance instructions for the Bauer Compressors, Inc. products listed on the front cover.

All instructions in this manual should be observed and carried out as written to prevent damage or premature wear to the product or the equipment served by it.

If your unit is equipped with nonstandard accessories and or options, supplemental information is normally included in other documentation; i.e. OEM Manuals or additional Bauer Manuals.

While every effort is made to ensure the accuracy of the information contained in this manual, Bauer Compressors, Inc. will not, under any circumstances be held accountable for any inaccuracies or the consequences thereof.

1.1.1 Manual Safety Notices

Important instructions concerning the endangerment of personnel, technical safety or operator safety will be specially emphasized in this manual by placing the information in the following types of safety notices.



DANGER

DANGER indicates an imminently hazardous situation which, if not avoided, will result in death or serious injury. This is limited to the most extreme situations.



WARNING

WARNING indicates a potentially hazardous situation which, if not avoided, could result in death or injury.



CAUTION

CAUTION indicates a potentially hazardous situation which, if not avoided, may result in minor or moderate injury. It may also be used to alert against unsafe practices.

NOTICE

NOTE advise of technical requirements that require particular attention by the operator or the maintenance technician for proper maintenance and utilization of the equipment.

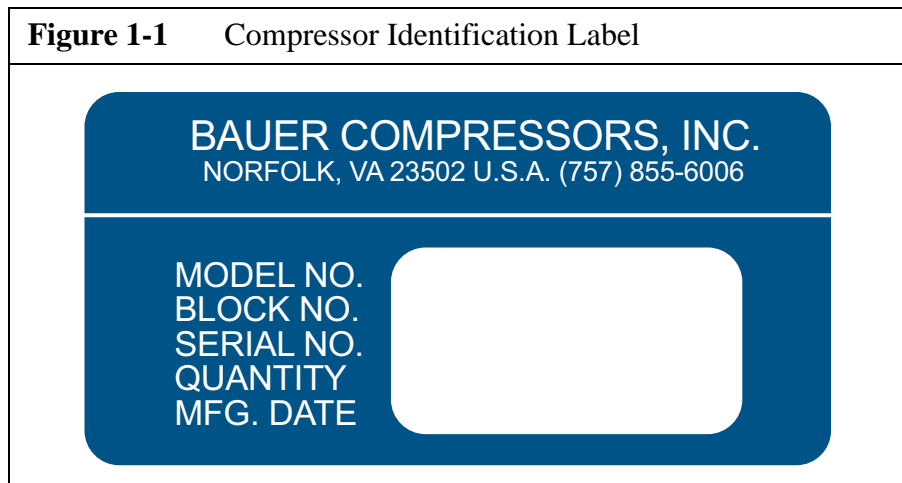
1.2 How to Use the Replacement Parts List

- A lozenge ♦ in the Item Number column indicates the part number for a complete assembly.
- a dagger (†) in the Qty column with or without an ellipsis (...) in the Part Number column means the part is illustrated for assembly purposes only and is not available for sale as an individual component. This part can be obtained by ordering the complete assembly.
- AR in the Qty column means that the item is cut or manufactured to the size which the customer specifies.
- A dash (—) in the Item Number column indicates that there is more than one part number applicable to the preceding Item Number.
- The letters in the columns labeled Kit indicate the number of operating hours when the part is to be replaced; a = replaced every 1,000 hours, b = replaced every 2,000 hours and c = replaced every 4,000 hours.
- NS in the Item Number column indicates the part is not illustrated but is available.

When placing an order for spare parts, please provide the following information to ensure delivery of the correct parts. The model number, date of manufacture and serial number can be found on the compressor unit identification plate on the compressor unit frame.

Information		Example
Model Number		VC 120
Serial Number		156156
Date of Manufacture		02/2014
Part Number		VAL-0502
Part Description		Valve
Part Quantity Required		1

Figure 1-1 Compressor Identification Label



**WARNING**

The use of repair parts other than those included in the Bauer Replacement Parts Lists may create unsafe conditions over which Bauer has no control. Such unsafe conditions can lead to accidents that may be life-threatening, cause substantial bodily injury, and/or result in damage to the equipment. Therefore, Bauer Compressors, Inc. can bear no responsibility for equipment in which unapproved repair parts are installed.

1.3 How to Use the Appendix

Information contained in the Appendix to this manual includes the following.

- The safety instructions applicable to this product. They must be read, understood and complied with prior to operating the product.
- The instructions for installing this product. They must be read, understood and complied with prior to operating the product.
- Reproducible Forms
- Reference Data
 - Torque Values
 - Torque Sequence
 - Conversion Formulas
 - Approved Lubricants
 - Glossary of Abbreviations & Acronyms
- Additional Documents

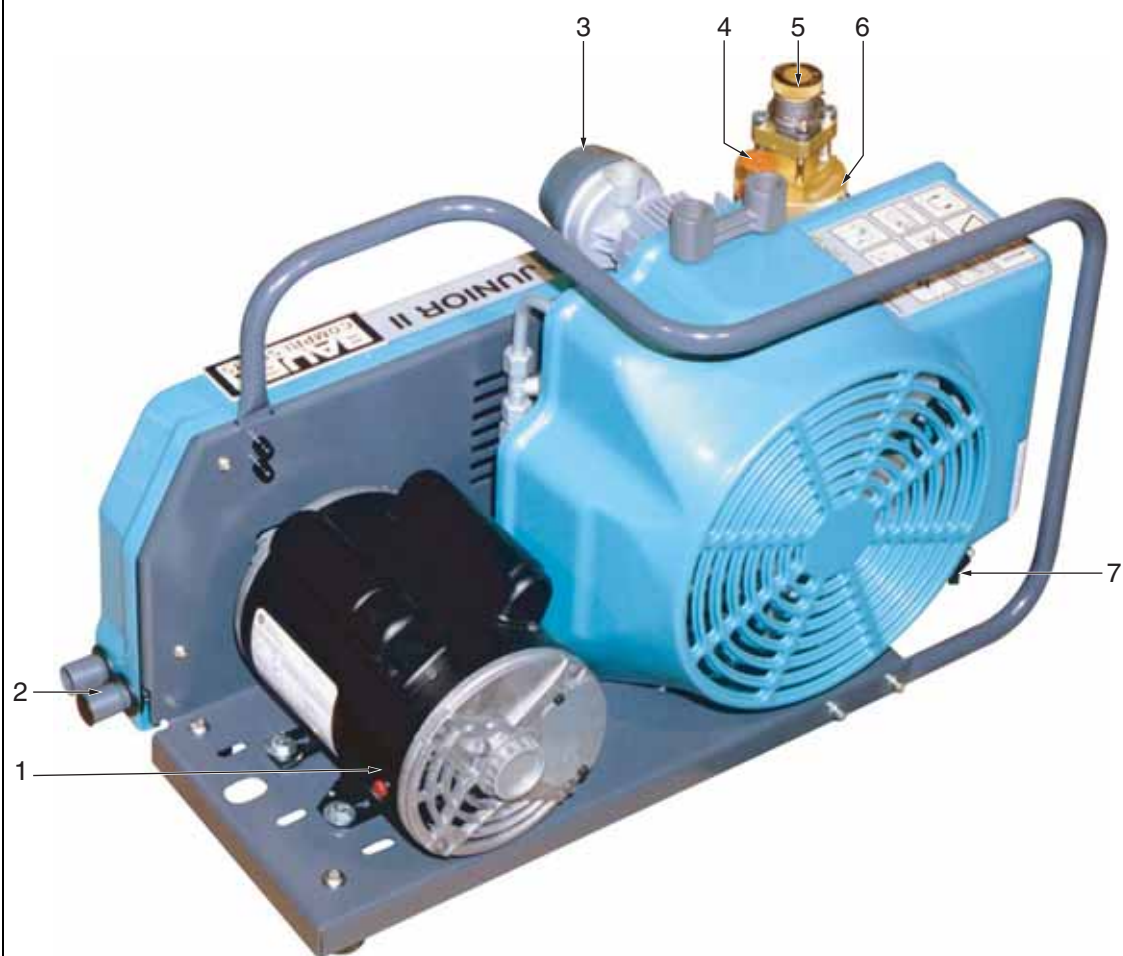
1.4 Compressor Unit Purpose

The JR II-E1, JR II-E3, and the are designed to compress air for breathing as required in diving applications.

1.5 Design

The Junior II compressor unit consists of the following major assemblies.

- Compressor Block
- Electric Motor
- P0 Purification System
- Fill Hose Assembly
- Base Plate and Frame

Figure 1-2 Junior II with Single Phase Electric Motor

1. Electric Motor (single phase shown)
2. Compressor Air Intake Extensions
3. Compressor Air Intake Filter
4. Oil Dip Stick

5. Final Pressure Valve
6. P0 Purification System
7. Condensate Drain Valve

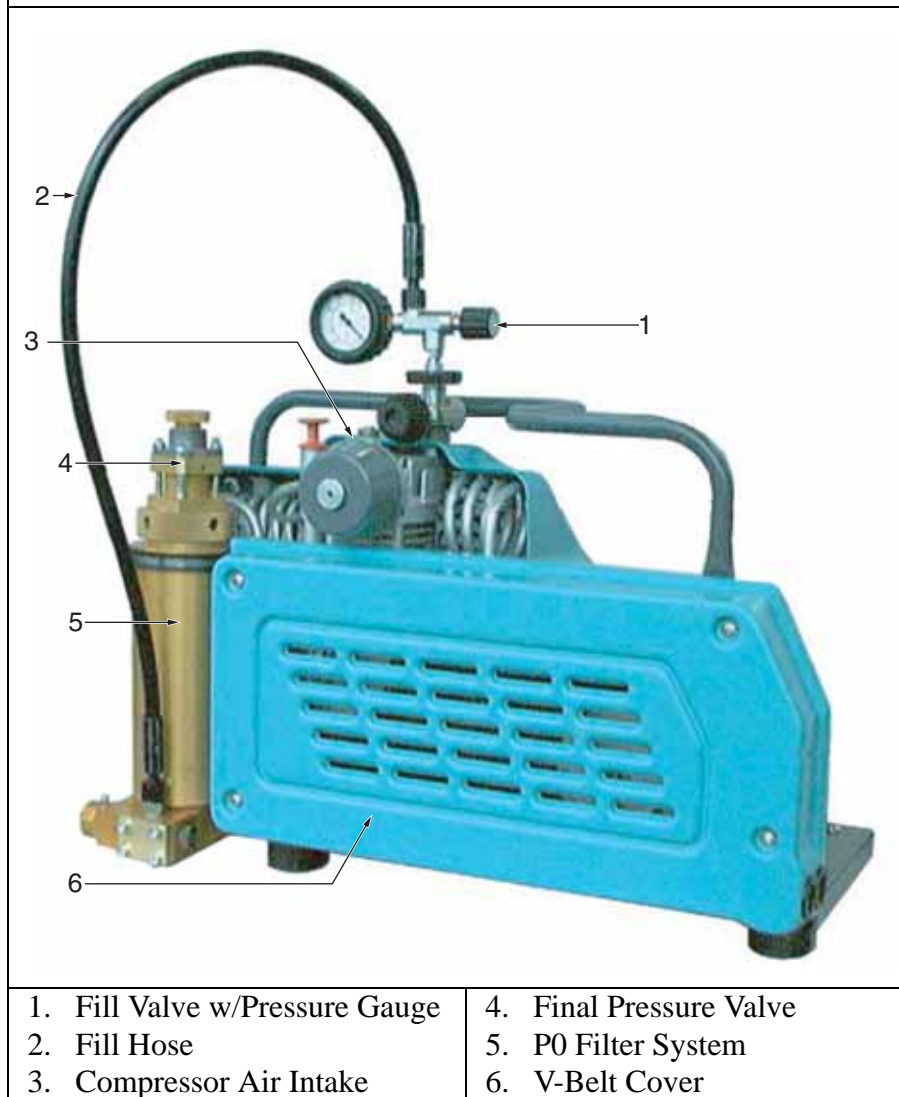
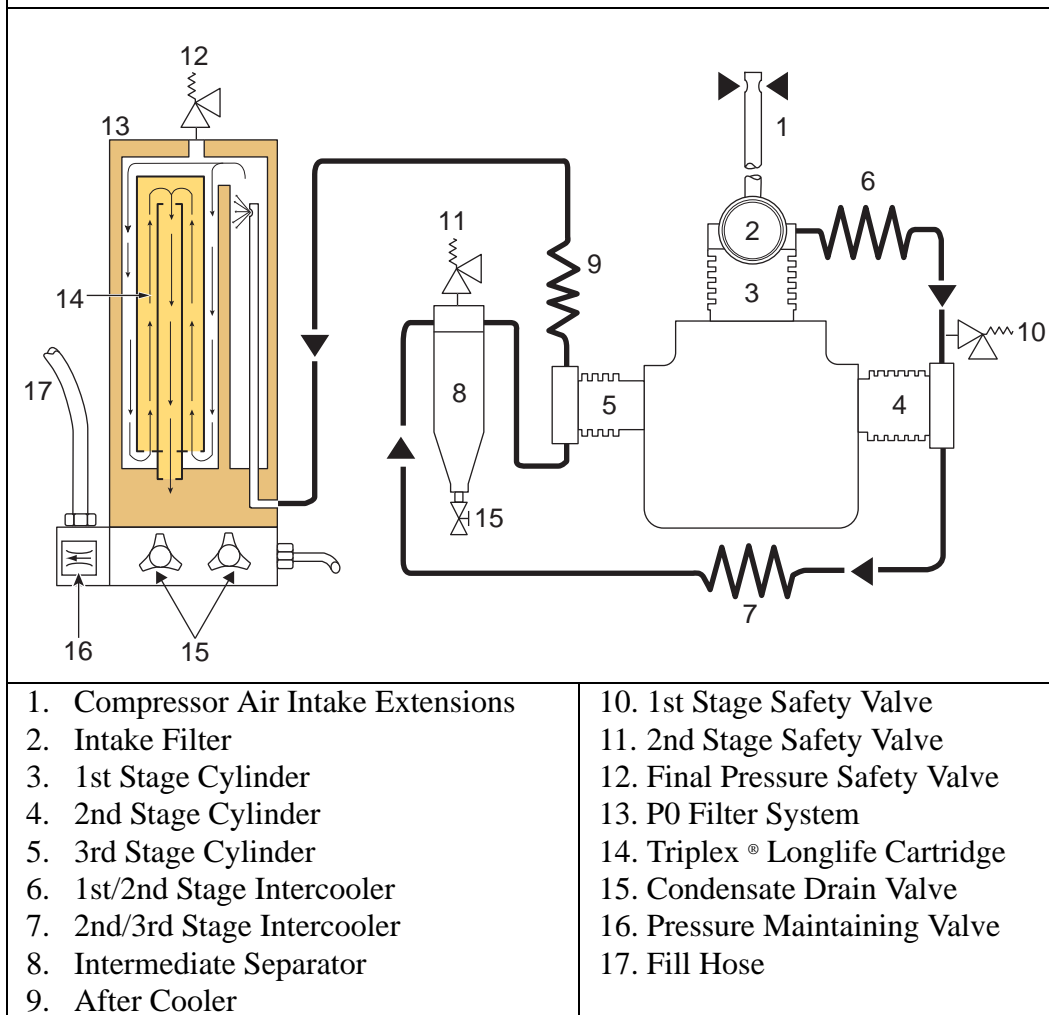
Figure 1-3 Junior II V-Belt Side

Figure 1-4 Internal Air Flow Diagram


1.6 Air Flow Diagram

See Figure 1-4. The air is drawn in through the Telescopic Tube (1) (Required for units with gasoline engine and recommended for those with electric motors) through the Intake Filter (2) and is compressed to final pressure in the Cylinders (3, 4 and 5). It is recooled by the Intercoolers (6 and 7) and the After-cooler (9). The pressure of the individual stages is controlled by Safety Valves (10 and 11). The compressed air is cleaned in the Intermediate Separator (8) and purified in the P0 Filter System (13). The Intermediate Separator and P0 Filter System are drained by the Condensate Drain Valves (15). The Pressure Maintaining Valve (16) provides a constant pressure within the P0 Filter System. The purified compressed air then passes through the Fill Hose (17) and Fill Valve (18) to the bottles to be filled. Fill pressure is indicated by the Final Pressure Gauge (19). The Final Safety Valve (12) is adjusted to blow off at the pressure selected.

1.7 Technical Specifications

All technical specifications are subject to change without prior notice or obligation. The Charging Rate is based upon recharging an 80 cubic foot bottle from 500 to 3,000 PSIG. The Free Air Delivered is compressor capacity referenced to standard inlet conditions.

1.8 Junior II Compressor Block

Number of stages	3
Number of cylinders	3
1st Stage Cylinder Bore	2.36 in (60mm)
2nd Stage Cylinder Bore	1.10 in (28mm)
3rd Stage Cylinder Bore	0.47 in (12mm)
Piston Stroke	0.95 in (24 mm)
Intermediate Pressure 1st stage	95 psig (6.5 bar)
Intermediate Pressure 2nd stage	945 psig (65 bar)
Compressor Block Oil Capacity	12 fluid ounces (360 cc)
Method of Lubrication	Splash
Maximum Ambient Temperature	40 - 115 °F (5 - 45 °C)
Maximum Permissible Inclination of Compressor ¹	5°
Maximum Speed	2,300 RPM

1.8.1 JR II-E1/115

Medium	Air
Intake Pressure	Atmospheric
Charging Rate	2.9 SCFM (82 l/min)
Free Air Delivered	2.5 SCFM (71 l/min)
Maximum Operating Pressure	5,000 psig (350 bar)
Package Weight	92 lbs (41.8 Kg)

1.8.1.1 Drive Specifications

Motor P/N	MTR-0025
Operating Voltage	115 - 230VAC, Single Phase, 60 Hz
Horsepower	2 HP
Speed	1,500 RPM
Type	ODP

1.8.2 JR II-E1

Medium	Air
Intake Pressure	Atmospheric
Charging Rate	3.9 SCFM (110 l/min)
Free Air Delivered	3.2 SCFM (90 l/min)
Maximum Operating Pressure	5,000 psi (350 bar)
Package Weight	89 lbs (40.5 Kg)

1.8.2.1 Drive Specifications

Motor P/N	MTR-0093
Operating Voltage	230VAC, Single Phase, 60 Hz
Horsepower	3 HP
Speed	2,100 RPM
Type	ODP

1. This value is valid only if the compressor block oil in normal level position corresponds with the upper mark of the oil dipstick and may not be exceeded.

1.8.3 JR II-E3

Medium	Air
Intake Pressure	Atmospheric
Charging Rate	3.9 SCFM (110 l/min)
Free Air Delivered	3.2 SCFM (90 l/min)
Maximum Operating Pressure	5,000 psi (350 bar)
Package Weight	111 lbs (50.5 Kg)

1.8.3.1 Drive Specifications

Motor P/N	MTR-28F2
Operating Voltage	208 - 430 VAC, Three Phase, 60 Hz
Horsepower	3 HP
Speed	3,600 RPM
Type	ODP, F2

CHAPTER 2: OPERATION

2.1 Preparation for Operation

Prior to operating the unit for the first time, read this Instruction Manual carefully.

1. Make sure that all persons operating the compressor unit and associated equipment are familiar with the function of all controls and indicators.
2. Thoroughly comply with the paragraph titled Fundamental Safety Notices contained in the Introduction section of this manual.
3. If the unit has been out of service for two years or more and uses synthetic compressor oil change the compressor oil. If the unit uses petroleum based compressor oil change it after being out of service one year.
4. During the initial operation or prior to operation subsequent to repairs operate the unit for at least five minutes with open outlet valve (unpressurized) to ensure proper lubrication of all parts before pressure is built up.
5. Prior to each operation check the oil level according to Section 2 Lubrication and determine whether maintenance is necessary in accordance with Section 13.
6. Every time the unit is started, check all systems for proper operation. If any malfunction is observed stop the unit immediately and find the cause of the fault or call the service department.

2.2 Units with Three Phase Motor

1. Immediately after switching on the unit for the first time check the direction of rotation of the motor for compliance with the arrow on the compressor unit.
2. If it is turning the compressor in the wrong direction the phases are not connected properly.
3. Shut down the unit and interchange two of the three phase leads from the switch box.
4. Never change leads from the motor.

2.3 Units with a Gasoline Engine

1. Check the engine oil level according to the manufacturers instructions.
2. Check the fuel tank and top up if necessary.

2.4 Starting the Unit.

2.4.1 Units with electric drive motor.

When final pressure is reached and the safety valve blows off, open the condensate valves and drain condensate. Unit is then ready for operation.

2.4.2 Units with a Gasoline Engine.

1. Open the condensate valves on the filters so the engine starts without load.
2. Set the choke to the START position. Start the engine with the recoil starter or the crank handle. As soon as the motor runs smoothly return the choke to normal operating position.

2.4.3 All Units

1. Close condensate drain valves and run the unit to the final pressure. Check final pressure safety valve and pressure gauge.
2. As soon as the final pressure safety valve blows off, open the condensate valve and drain condensate. The unit is now ready for filling operations.

2.5 Filling Procedure



WARNING

Ensure the intake air is free from noxious gas, exhaust fumes and solvent vapors. On units employing a gasoline engine it is most important to use an intake hose for this purpose. It is also recommended that the intake hose be used with units driven by electric motor.



WARNING

Never open fill valves or shut off valves when under pressure and the hose is not connected as discharging high pressure compressed air can cause serious accidents.



WARNING

Fill hoses must be in satisfactory condition and the threads must be undamaged. Pay particular attention to the interface from hose fitting to hose. If the rubber is scored, the hose must be discarded, otherwise water can corrode the wire gauze causing a hose failure.

2.5.1 General Procedures

1. The fill valve connection is of the manual type permitting connection to the air tank without tools. An O-ring is provided for sealing purposes.
2. Compressed air tank fill valves for pressure in excess of 2900 psi (200 bar) are standardized and connectors for 2900 psi (200 bar) and 4400 psi (300 bar) are different and can not be mixed up.
3. To ensure safe air tank removal after filling, the fill valve has an integral venting bore. Therefore always close the tank valve before closing the fill valve.
4. During the fill procedure the bottles will warm up due to re-compression.
5. After filling, remove and allow the bottle to cool down. When it is cool the bottle may be reconnected and topped up to its maximum filling pressure.

2.5.2 Bottle Filling Procedures

See Figure 2-1



WARNING

Do not attach bottles to 4350 psi (300 bar) units unless the bottle is rated for this pressure. (Note pressure stamped on the tank neck)



WARNING

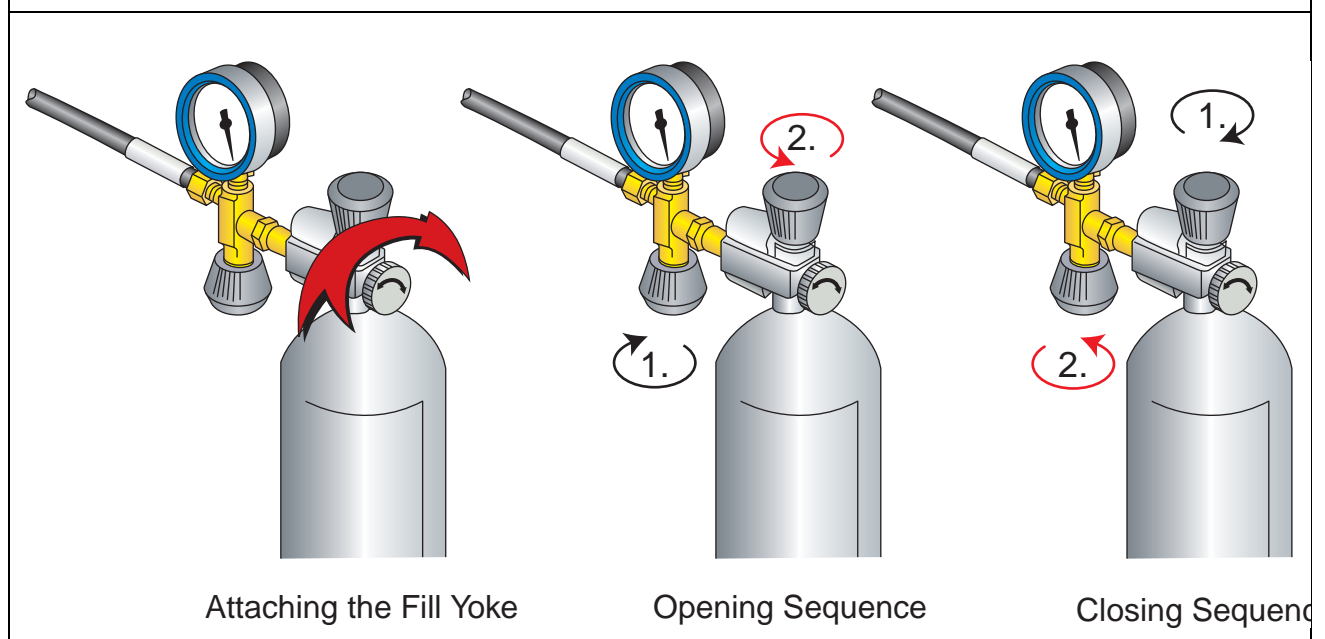
Never open the fill valve unless the bottle is connected to the fill hose. Whipping of an unrestrained hose caused by high pressure air discharge can cause serious injury!



CAUTION

The filling procedure should not be interrupted for more than 10 minutes to avoid increased CO2 levels in the air filling the bottle..

Figure 2-1 Air Storage Bottle Valve Operating Sequence



2.5.3 Connecting to the Air Storage Bottle

1. Ensure both the fill valve and bottle valve are closed
2. Connect the air bottle to the compressor fill hose utilizing the fill yoke.

2.5.4 Filling the Bottle

1. First open fill valve. (1)
2. Open bottle valve. (2)
3. Bottle will begin filling.
4. During the filling process, monitor bottle pressure on fill valve gauge and drain condensate at the compressor.

2.5.5 Removing the Bottle

1. First close the bottle valve. (1)
2. Close the fill valve. (2)
3. Remove fill yoke and store compressed air bottle.

2.6 Shut-Down Procedures

On all units first close the fill valve.

2.6.1 Units with Electrical Motor

Turn off electrical power with the appropriate switch

2.6.2 Units with a Gasoline Engine

Shut down the gasoline engine with either the stop button or stop lever. (See manufacturers instruction manual.)

2.6.3 All Units

1. Open the manual drain valves to remove all moisture in the interstage filter and the oil and water separator.
2. Close all drain valves again.
3. Check the oil level in the compressor and top up, if necessary.
4. Also check operating hours to see if the compressor needs servicing in accordance with the maintenance schedule.

CHAPTER 3: JUNIOR II COMPRESSOR

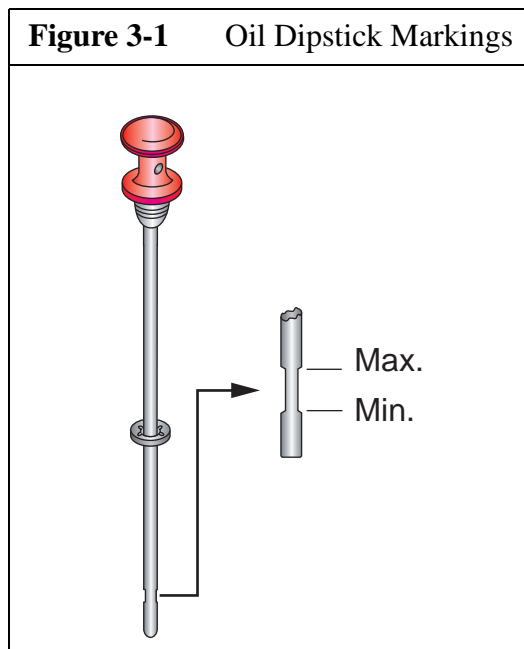
3.1 Lubrication

3.1.1 Oil Level Check

Check the oil level prior to putting compressor into operation each day

1. Remove dipstick and wipe dry.
2. Reinsert the dipstick ensuring that it is completely seated.
3. Withdraw the dipstick again and note the oil level.

The level should be between the minimum and maximum marks on the dipstick. See Figure 3-1.



CAUTION

The oil level must not go down below the minimum mark but also must not exceed the maximum mark as this will cause excessive lubrication of the compressor and result in the valves carbonizing

3.1.2 Type of Oil

NOTICE

The part number for the oil delivered in all Junior II compressor units is Bauer part number: OIL-0024

Due to the thermal load on the compressor, only high quality oil should be used. It is recommended that you restrict oil to Bauer P/N OIL-0024 which has a proven record of success and is specified for this compressor.

3.1.3 Oil Changes

The oil must be changed every 2,000 operating hours or every two years whichever is reached first.

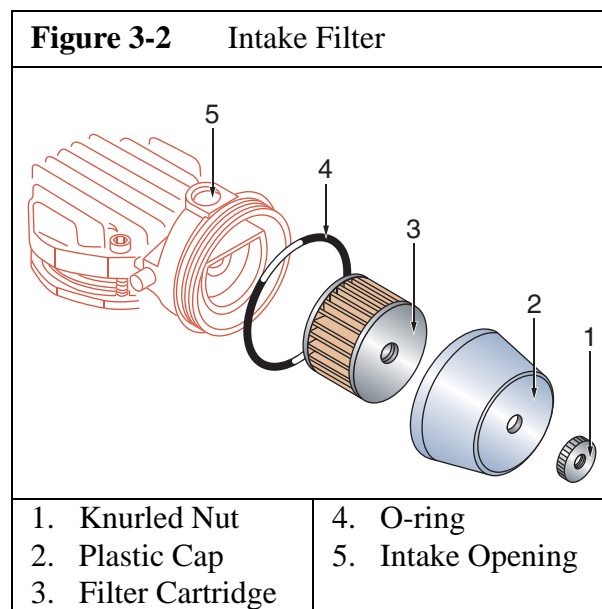
3.1.3.1 Oil Change Procedures

1. Run the compressor until it reaches normal operating temperature.
2. Remove the oil dipstick from oil filler tube.
3. While the oil is still warm, remove oil drain plug and drain oil into an appropriate container.
4. After oil has completely drained, reinstall oil drain plug and tighten.
5. Refill with 12 Fluid Ounces (360 cc) of oil, through the oil filler tube.
6. Check oil level using the oil dipstick.
7. Oil level is correct if it is at the upper mark. See Figure 3-1

3.2 Intake Filter

3.2.1 Description

A dry micronic filter is used to filter the intake air. See Figure 3-2



3.2.2 Maintenance

The filter cartridge must be changed at regular intervals according to the maintenance schedule.

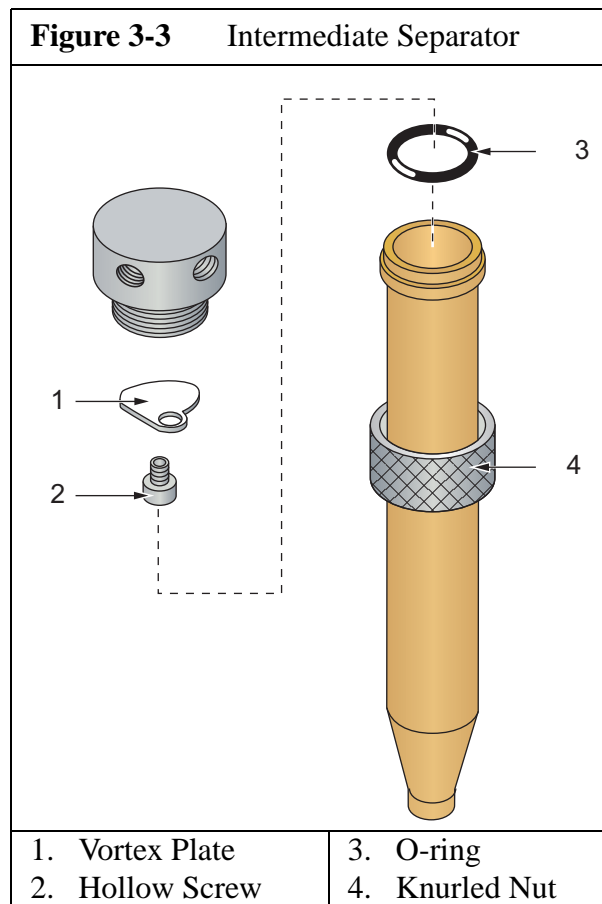
1. Remove knurled nut (1) and take off plastic cap (2).
2. Clean the inside of the filter housing with a damp cloth. Take care to prevent dust from entering the opening into the compressor.
3. Replace Filter Cartridge with a new Filter Cartridge.
4. Inspect O-ring (4) and replace if damaged.
5. Replace plastic cap and tighten knurled nut

3.2.3 Telescope Intake Tube

See Figure 3-2. The telescopic intake tube is inserted in the intake opening (5). This is necessary to ensure clean intake air on gasoline engine driven compressor units. Its use is also recommended with electric motor driven compressor units.

3.2.4 Intermediate Separator

An intermediate separator is mounted on the compressor block. This separator is designed to remove oil and water which accumulates due to the cooling of the medium after the compression process. Separation is achieved by means of centrifugal action provided by a vortex plate (1)



WARNING

The rapid de-pressurizing and re-pressurizing of the intermediate separator during condensate draining subjects it to metallurgical stresses. To prevent catastrophic failure with the possibility of damage, injury or death the intermediate separator must be replaced after 85,000 load cycles. A load cycle equals one de-pressurization / re-pressurization. The Bauer recommended frequency of condensate draining is every fifteen minutes and is a balance between maximizing the life of the oil and water separator chamber and maintaining the quality of the delivered air.

3.2.5 Maintenance

The Intermediate Separator P/N 081798 requires no maintenance.

3.3 Compressor Valves

3.3.1 Description

The valve heads of the individual stages form the top part of the cylinders. The intake and pressure valves are fitted inside the valve heads. (Note that the valves are operated by air flow. (See Figure 3-4). On the suction stroke, the intake valve is opened and air flows into the cylinder. At the start of the compression stroke the intake valve closes. At the end of the compression stroke the compressed air forces the pressure valve open.

The 1st Stage combines the intake and pressure valves in a plate valve. (See Figure 3-5).

Figure 3-4 Valve Function

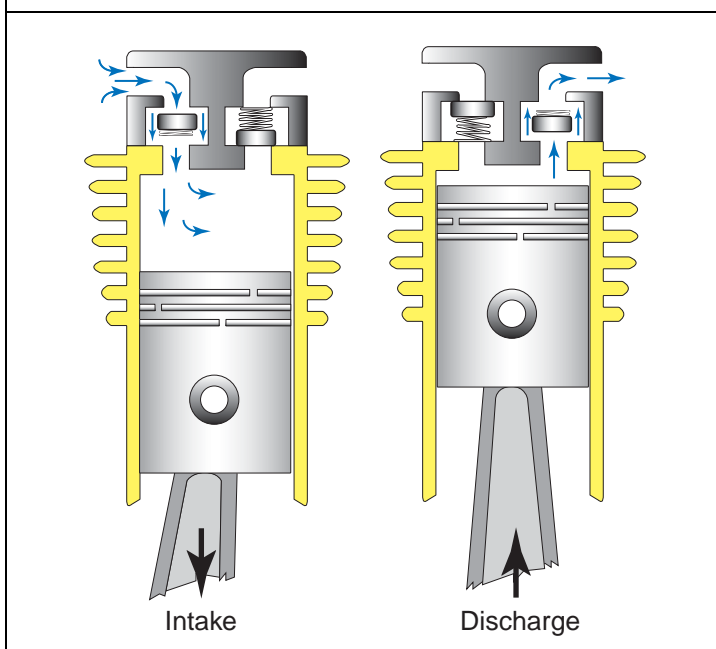
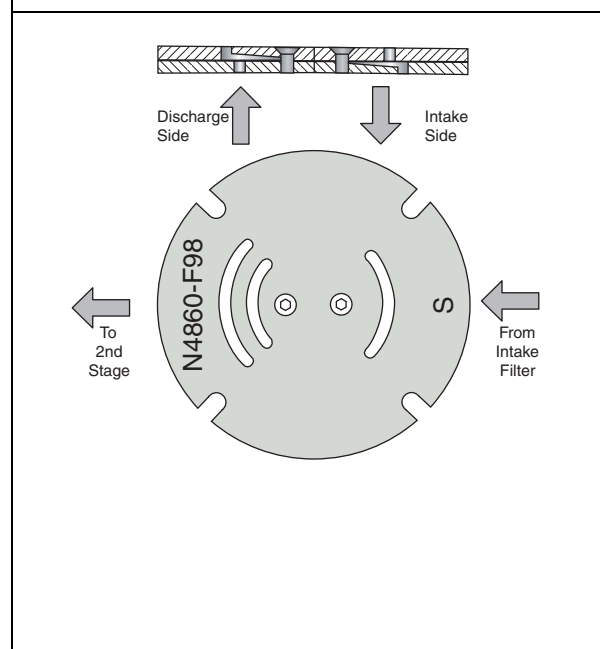


Figure 3-5 1st Stage Plate Valve



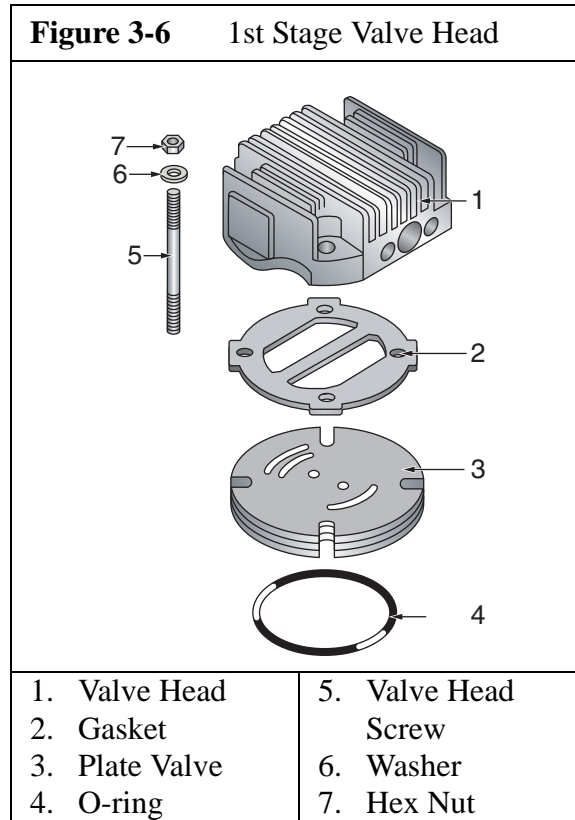
3.3.2 Initial Operational Check

After maintenance work on the valves, the valves should be checked for proper operation. Note that the intake line to the valve heads is warm and the outlet piping should be hot. This indicates the valves are operating correctly.

3.3.3 Changing the Valves

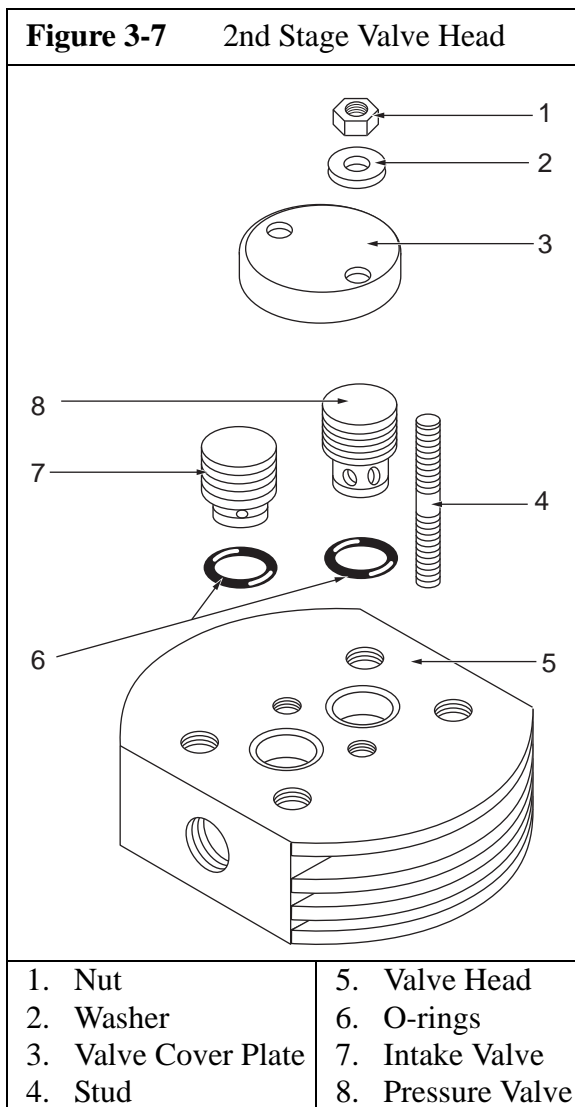
- Always replace the valves as a complete set.
- Observe the correct sequence when reassembling.
- Check individual components for excessive wear. If the valve seat and valve disks are dented, replace the valves.
- Valve head screws must be tightened with a torque wrench.
- Check the valve space in the valve head for dirt and clean if necessary.
- Thirty minutes after restarting the compressor unit, stop the unit, let it cool to ambient temperature and re-tighten the valve studs and cap nuts. Otherwise valves could work loose due to the setting of the gaskets.

- After finishing all maintenance work on the valves, turn the compressor by hand using the flywheel and check that all items have been correctly installed.
- Remove and check the valves every 1,000 operating hours.
- Replace the valves every 2,000 operating hours to avoid fatigue failure



3.3.4 Changing the 1st Stage Valves

1. Loosen the two cap nuts from tube connectors and remove after-cooler.
2. Remove four valve head screws (5) from valve head (1). Remove valve head.
3. Remove gasket (2) and plate valve (3).
4. When reinstalling the plate valve, check that the mark “S” is facing upwards and towards the inlet filter side. The cross bar of the gasket (2) provides a seal between the inlet and pressure opening of the plate valve



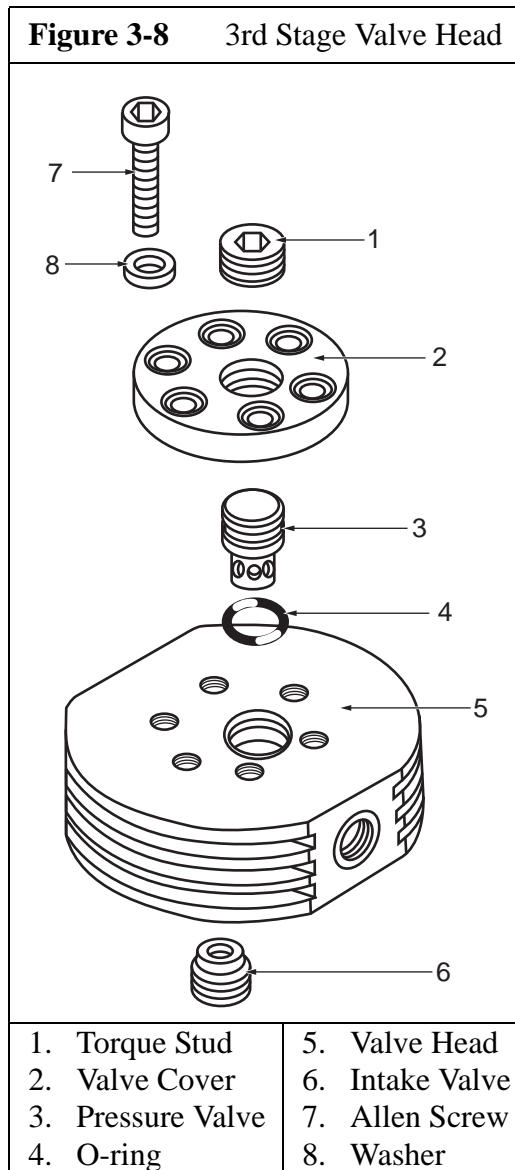
3.3.5 Changing the 2nd Stage Valves

Both the intake and pressure valves can be serviced from the top of the head. See Figure 3-7.

1. Remove two captive nuts (1) and spring washers (2)
2. Remove valve cover plate (3)
3. Remove valves (7 and 8) using two screwdrivers as shown in Figure 3-9
4. Reassemble in reverse sequence. Position spring washers so the curved side is facing up. Fasten nuts so the valve cover plate is parallel to the valve head. Torque to 7 ft-lbs (10 Nm).

3.3.6 Changing the 3rd Stage Valves

On this valve head, the valves are arranged on the upper and lower side due to the small diameter of the 3rd Stage head. See Figure 3-8.

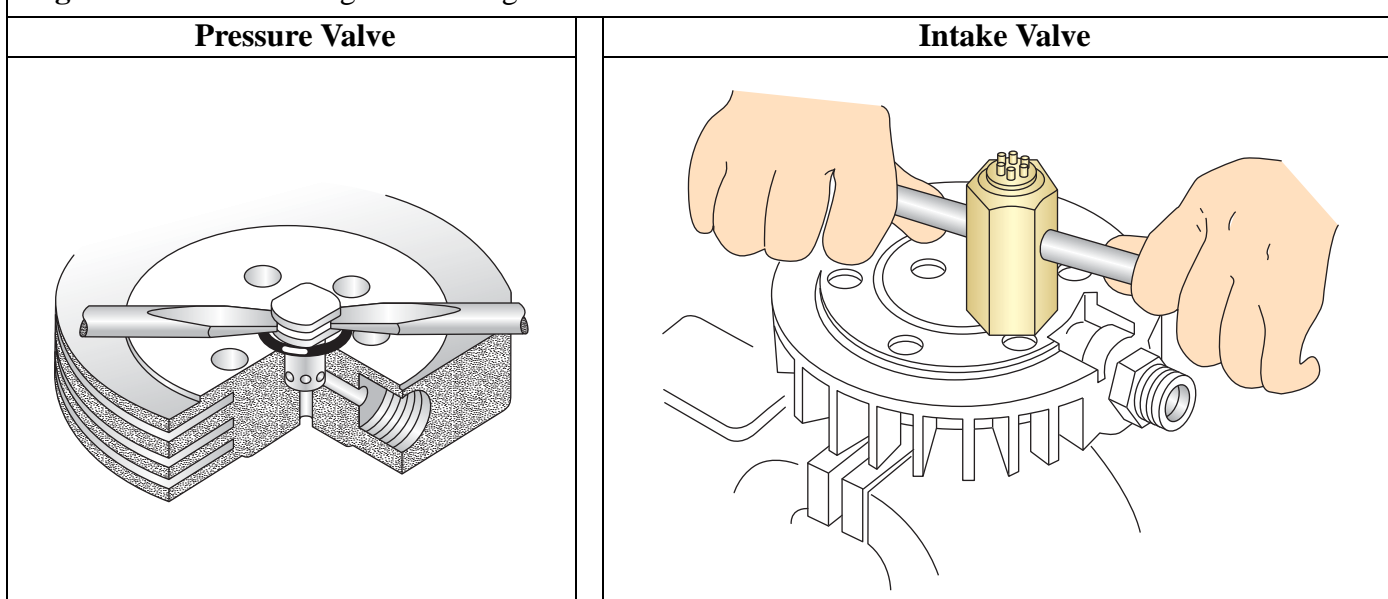


CAUTION

Always change the intake and pressure valves of the 3rd Stage at the same time.

1. To remove or install the intake valve (6) use the special valve tool(See Figure 3-9).
2. The pressure valve (3) is merely inserted into the valve head (5). It is sealed by the O-Ring (4) and fixed to the valve head by the torque stud (1).
3. Remove pressure valve by loosening torque stud (1) a couple of turns.

4. Remove Allen screws (7) and take off valve head cover (6).
5. To lift pressure valve out of valve head put two flat head screwdrivers into grooves of the pressure valve body. See Figure 3-9. If necessary turn valve to loosen it, using a 13 mm open end wrench on the flat surfaces of the valve.
6. Lift out pressure valve (3) together with O-Ring (4).
7. Check O-Ring for damage and wear, replace if necessary. Put O-ring into the valve head.
8. To reinstall pressure valve Insert valve (3) and install valve head cover (6).
9. Fasten valve head cover to valve head with Allen screws and washers (8).
10. Screw in torque stud (1) and torque to 14 ft-lbs (20 Nm).

Figure 3-9 Removing the 3rd Stage Valves

3.4 Repair and Troubleshooting

3.4.1 General Repair Instructions

Preventive maintenance usually involves replacing the valves, gaskets and sealing rings as well as carrying out the maintenance work.

Repair work can be carried out on the compressor block to a certain extent but a certain experience and skill level is necessary.

It should be noted however, that

- No repair should be carried out on the crankshaft or bearings.
- Safety valves are not repaired but always replaced completely.

3.4.2 Troubleshooting Tables.

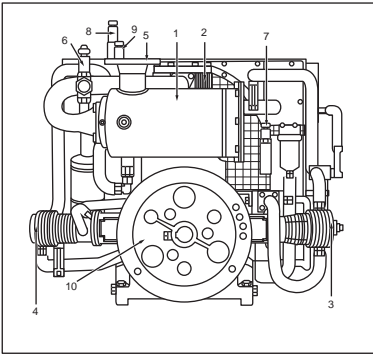
3.4.2.1 Electric Motor		
TROUBLE	CAUSE	REMEDY
Motor will not start	Electric circuitry faulty	Check all fuses, terminal connections, wire leads, make sure that motor data complies with mains supply.
Motor runs eccentrically	V-belt worn	Replace V-belt
Motor protection switch turns unit off	Insufficient voltage because of a weak power supply.	Switch off other power consuming devices.
	Power supply cable too long or too small in diameter	Replace with suitable cable

3.4.2.2 Gasoline Engine		
TROUBLE	CAUSE	REMEDY
Engine will not start	See engine instruction	See engine instructions
Engine runs eccentrically	V-belt worn	Replace V-belt
Excessive V-belt wear	V-belt tension incorrect	Readjust
	Pulleys not aligned	Readjust

3.4.2.3 Compressor Block

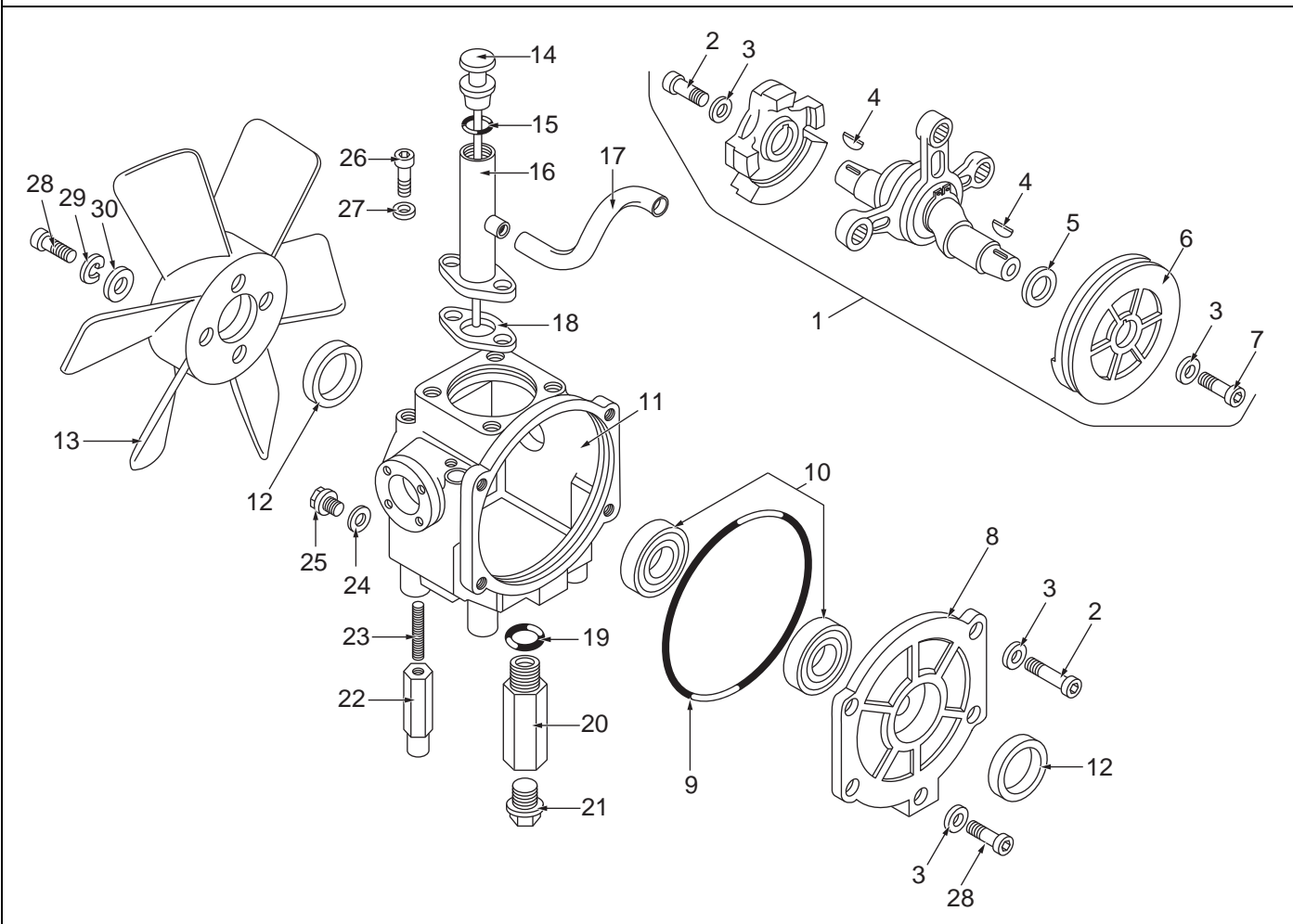
TROUBLE	CAUSE	REMEDY
Compressor does not attain final pressure.	Condensate drain valves leaking	Tighten and reseal.
	Final pressure safety valve defective (blows to soon)	Replace safety valve
	No cartridge in P21 Filter system. (air escaping through the cartridge safety bore.)	Replace cartridge
	Vent screw for final pressure safety valve not in operating position.	To vent, unscrew until completely open.
Air delivery drops	Intake filter soiled	Clean or replace filter cartridge.
	Pipe coupling leaking	Tighten couplings.
	Excessive wear of the 3rd stage piston	Replace piston and sleeve of 3rd stage.
Intermediate pressure safety valve blows	Intermediate pressure too high because of defective inlet or pressure valve of the following stage.	Check and replace inlet or pressure valve.
	Safety valve leaking	Replace safety valve.
Air escaping through the cartridge safety bore	Cartridge missing	Replace cartridge
	Cartridge O-rings defective	Check and replace O-rings
Taste of oil in the air	Cartridge saturated	Replace cartridge
	Unqualified lubricant being used	Replace with approved oil.
Compressor overheats	Insufficient cooling air	Inlet and pressure valve of one stage leaking, or direction of rotation incorrect.
	Ambient temperature too high.	Check for a maximum ambient temperature of 115 °F (45 °C).
	Direction of rotation is incorrect.	Correct direction of rotation.
	Inlet and pressure valve of one stage is leaking	Check valves, clean and replace if necessary.

This page is inserted to provide proper page sequencing

[illegible][illegible]

3.5 Replacement Parts List

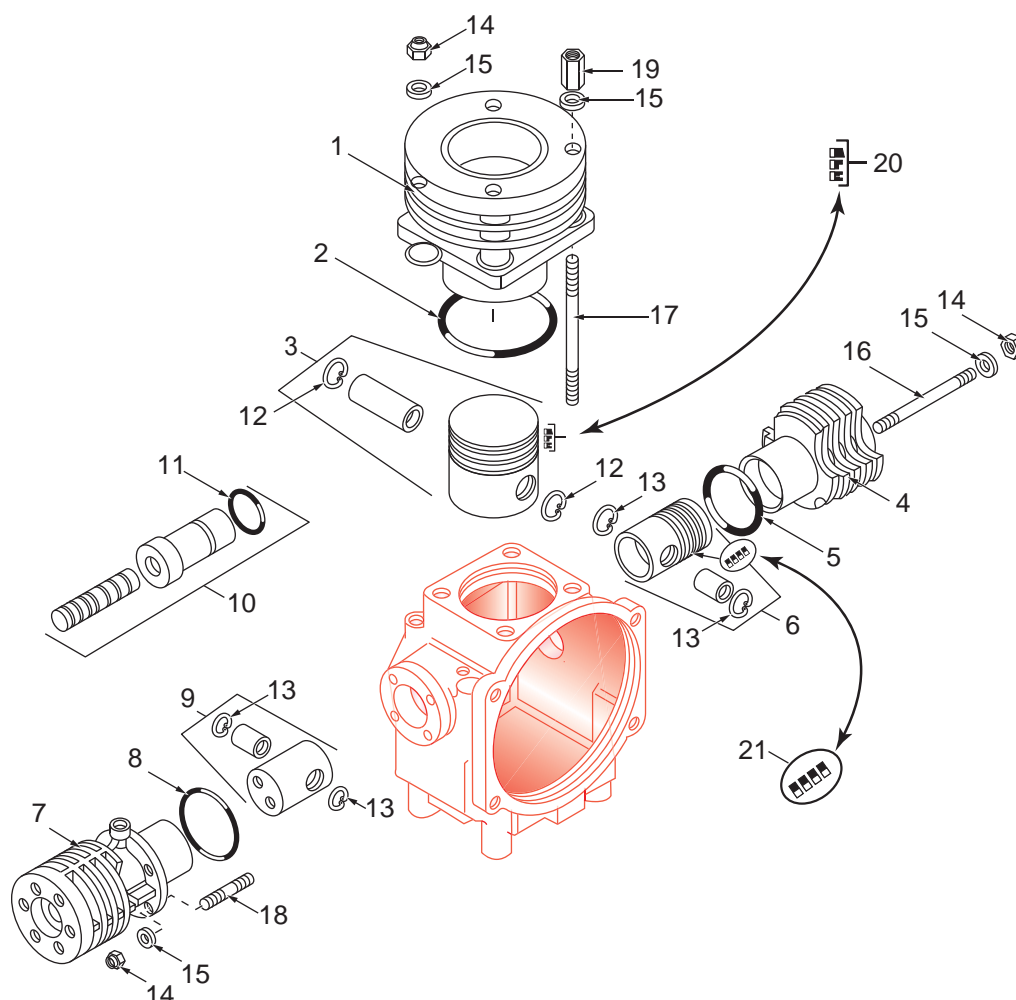
Figure 3-10 Crankcase, Driving Gear and Fan



#	KIT	Qty	Part No.	Description	Notes
1	...		067035	Driving Gear Assembly	Items 2 through 7
2	...	5	N19549	Allen Screw	
3	...	7	N2862	Washer	
4	...	2	N4889	Key	
5	...	1	59470	Thrust Washer	
6	...	1	67027	V-belt Pulley	
7	...	1	N19548	Allen Screw	
8	...	1	59397	Cover	
9	...	1	N4855	O-ring	
10	...	2	N3702	Roller Bearing	
11	...	1	61371	Crankcase	
12	...	2	N2861	Shaft Seal	
13	...	1	13920	Fan	

Figure 3-10 (cont.) Crankcase, Driving Gear and Fan

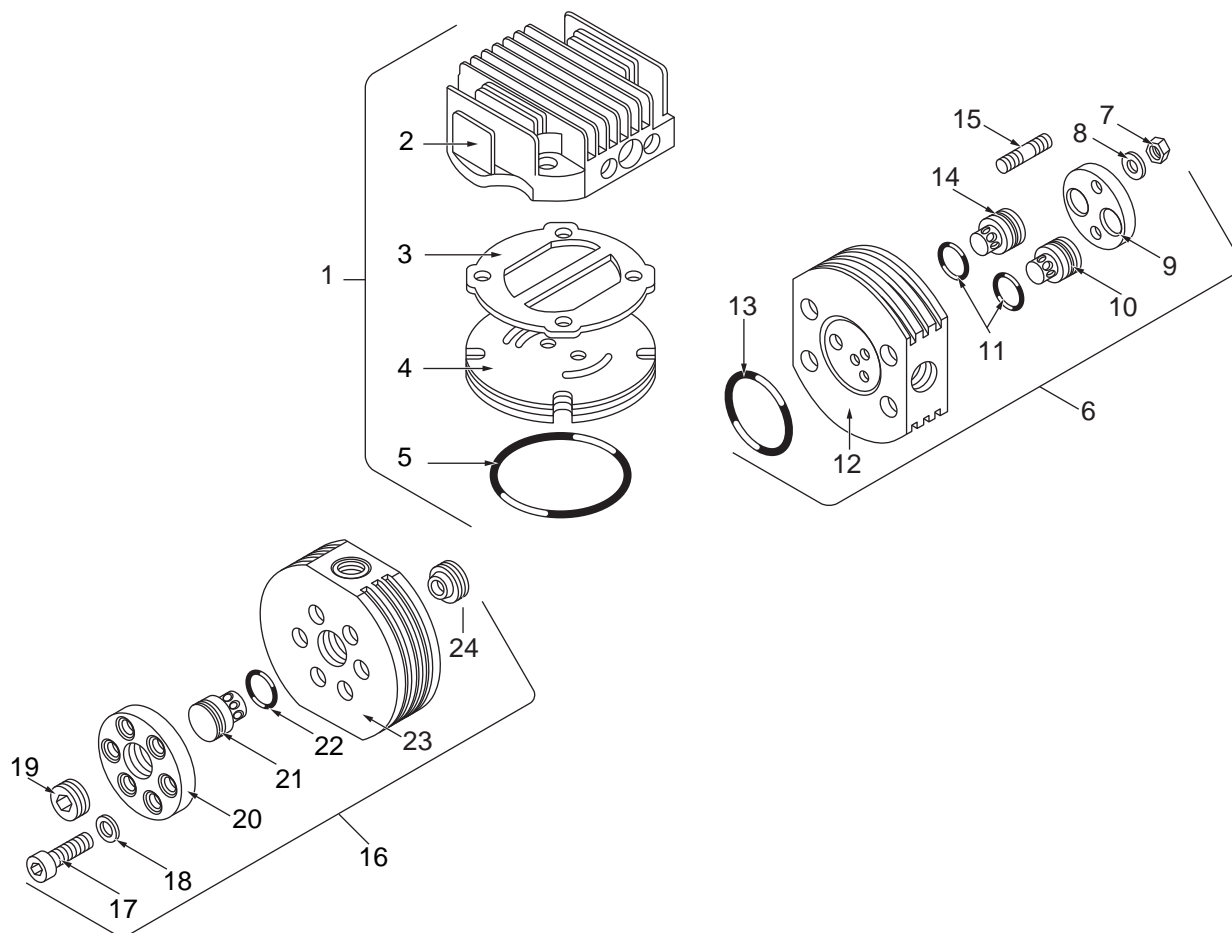
#	KIT	Qty	Part No.	Description	Notes
14	...	1	067013	Dip-stick	
15	...	1	N3951	O-ring	
16	...	1	67007	Oil Filler	
17	...	1	N1055	Hose	
18	...	1	12560	Gasket	
19	...	1	N842	Gasket	
20	...	1	61973	Extension, Oil Drain	
21	...	1	N3707	Plug with Plastic Gasket	
22	...	1	077771	Spacer	
23	...	1	N30297	Stud	
24	...	1	N4051	Gasket	
25	...	1	N15688	Plug	
26	...	2	N19533	Allen Screw	
27	...	2	N3026	Split Lock Washer	
28	...	2	N19547	Allen Screw	
29	...	1	N108	Split Lock Washer	
30	...	1	N2460	Washer	

Figure 3-11 Pistons and Cylinders


#	KIT	Qty	Part No.	Description	Notes
1	...	1	76548	Cylinder 1st Stage	60 mm
2	..c	1	N4948	O-ring	
3	...	1	069918	1st Stage Piston Asy.	
4	...	1	61354	Cylinder 2nd Stage	28 mm
5	..c	1	N3157	O-ring	
6	...	1	069920	2nd Stage Piston Asy.	
7	...	1	67096	Cylinder, 3rd Stage	12 mm
8	..c	1	N4868	O-ring	
9	...	1	069927	3rd Stage Piston Asy.	
10	.b.	1	075310	Piston and Sleeve Assembly	
11	...	1	N2507	O-ring	
12	...	2	N1033	Circlip	
13	...	4	N15294	Circlip	

Figure 3-11 (cont.) Pistons and Cylinders

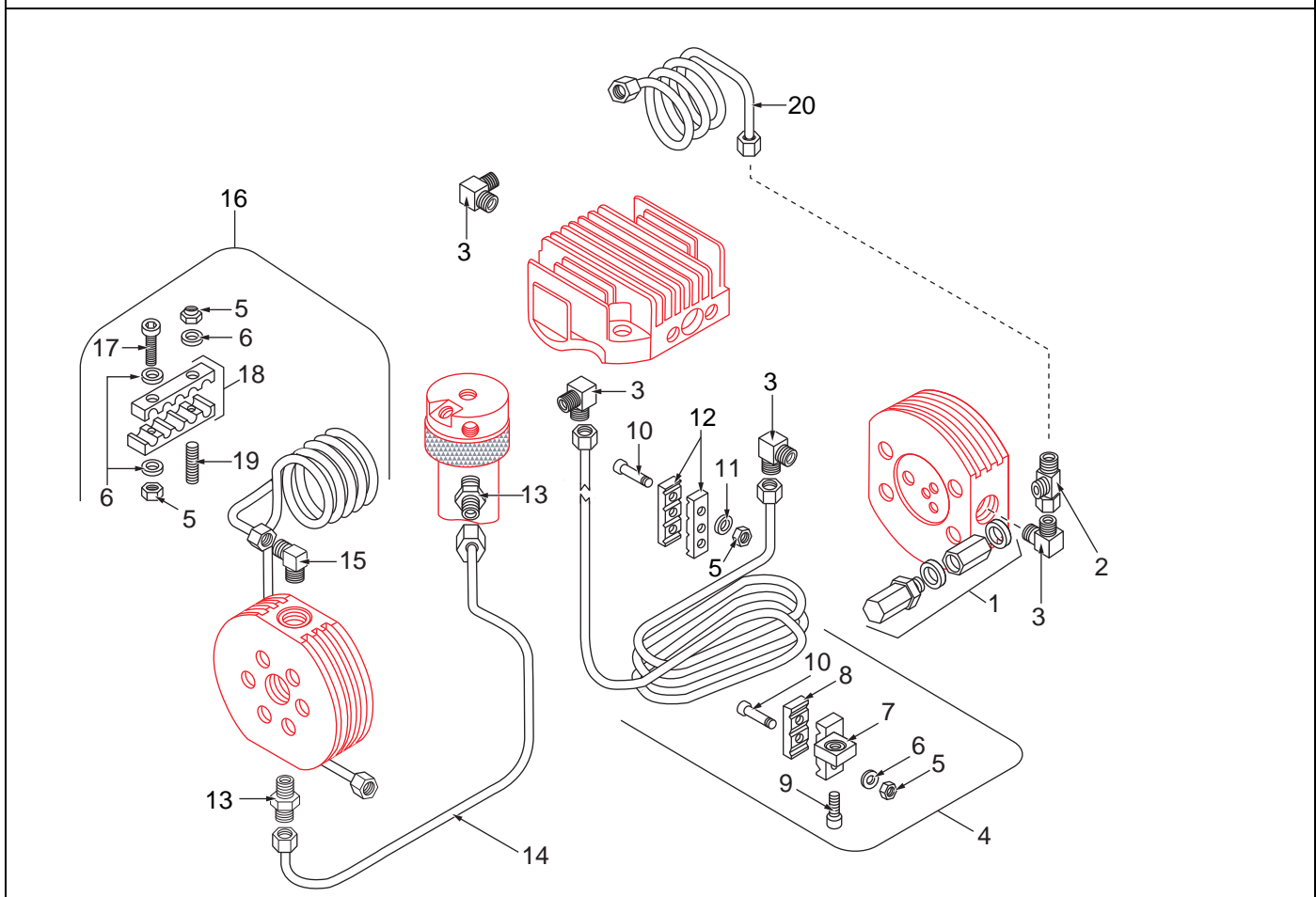
#	KIT	Qty	Part No.	Description	Notes
14	a..	10	N1042	Hex Nut, Self Locking	
15	...	12	N102	Flat Washer	
16	...	4	N4615	Stud	
17	...	4	N24861	Stud	
18	...	4	N15691	Stud	
19	...	2	67518	Hex Bushing	
20	...	1	N4206	1st Stage Piston Ring Set	60 mm
21	...	1	N15816	2nd Stage Piston Ring Set	28 mm

Figure 3-12 Valve Heads and Valves


#	KIT	Qty	Part No.	Description	Notes
1	...	1	077179	1st Stage Valve Head Assembly	Items 2 through 5
2	...	1	58105	1st Stage Valve Head	
3	...	1	58144	Gasket	
4	.b.	1	N4860	Reed Valve	
5	...	1	N3712	O-ring	
6	...	1	069930	2nd Stage Valve Head Assembly	Items 7 through 15
7	a..	4	N1042	Hex Nut, Self Locking	
8	...	4	N4640	Spring Washer	
9	...	1	58133	2nd Stage Valve Cover	
10	.b.	1	058136	Inlet Valve Assembly	
11	...	2	N638	O-ring	
12	...	1	58130	2nd Stage Valve Head	
13	a..	1	N4868	O-ring	
14	.b.	1	058135	Discharge Valve Assembly	
15	...	4	58134	Stud	

Figure 3-12 (cont.) Valve Heads and Valves

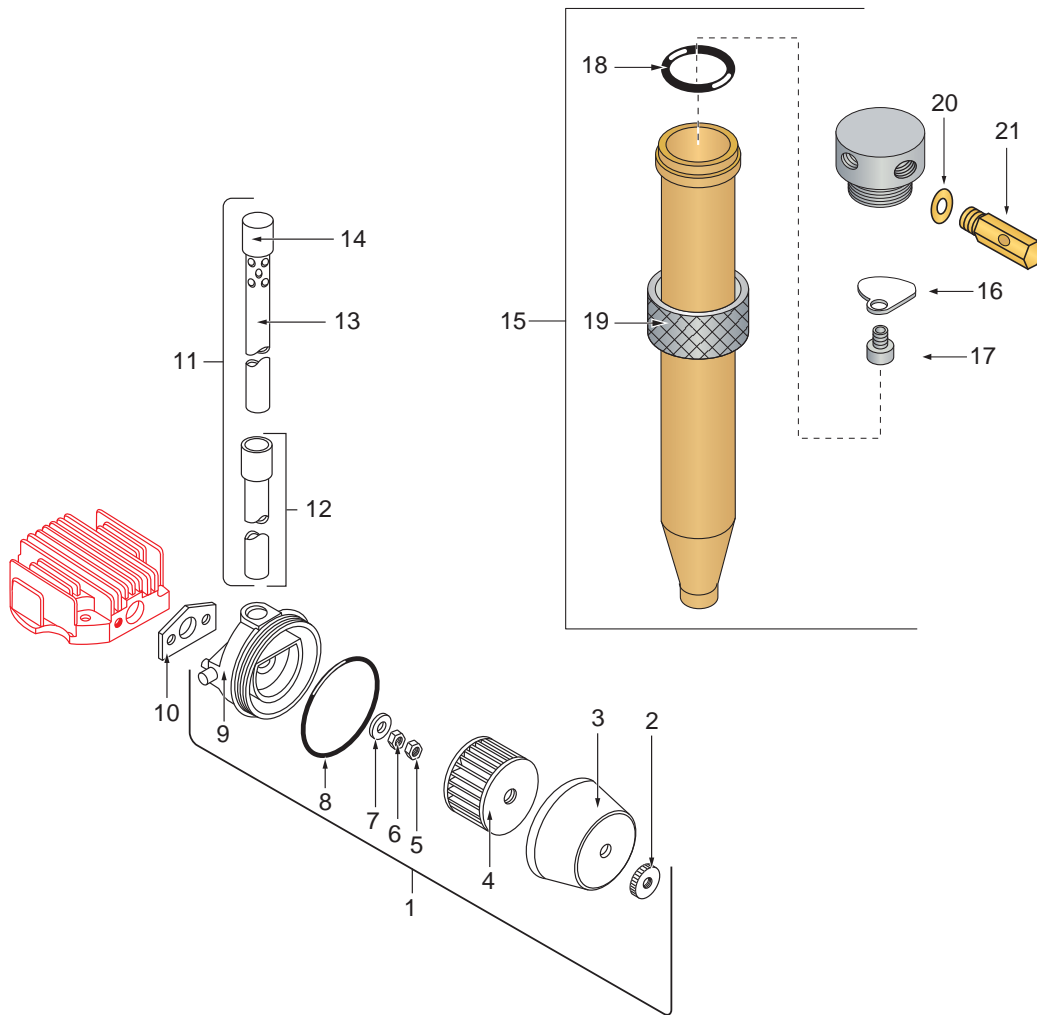
#	KIT	Qty	Part No.	Description	Notes
16	...	1	069931	3rd Stage Valve Head Assembly	Items 17 through 24
17	...	6	N19540	Allen Screw	
18	...	6	N102	Flat Washer	
19	...	1	59449	Plug	
20	...	1	59457	Valve Head Cover	
21	.b.	1	014121	Discharge Valve	
22	...	1	N2789	O-ring	
23	...	1	61362	3rd Stage Valve Head	
24	.b.	1	081409	Intake Valve	

Figure 3-13 Cooler


#	KIT	Qty	Part No.	Description	Notes
1	...	1	081803	1st Stage Safety Valve	
2	...	1	N20213	Male Run Tee	
3	...	4	N20007	Male Elbow	
4	...	1	077193	2nd Stage Inter-cooler Assembly	
5	...	7	N1042	Hex Nut, Self Locking	
6	...	4	N102	Flat Washer	
7	...	1	61903	Inter-cooler Left Bracket	
8	...	1	55579	Bracket	
9	...	1	N19548	Allen Screw	
10	...	1	N15317	Allen Screw	
11	...	3	N3313	Washer	
12	...	2	55589	Bracket	
13	...	2	N20153	Connector	
14	...	1	077195	Tubing	
15	...	1	N20172	Male Elbow	

Figure 3-13 (cont.) Cooler

#	KIT	Qty	Part No.	Description	Notes
16	...	1	077197	After-cooler	
17	...	1	N19498	Hex Screw	
18	...	2	62148	Bracket	
19	...	1	N3786	Stud	
20	...	1	069938	Inter-cooler, 1st-2nd Stage	
NS	...	2	14369	Clamp	for Separator
NS	...	2	N19498	Allen Screw	
NS	...	2	N4640	Washer	

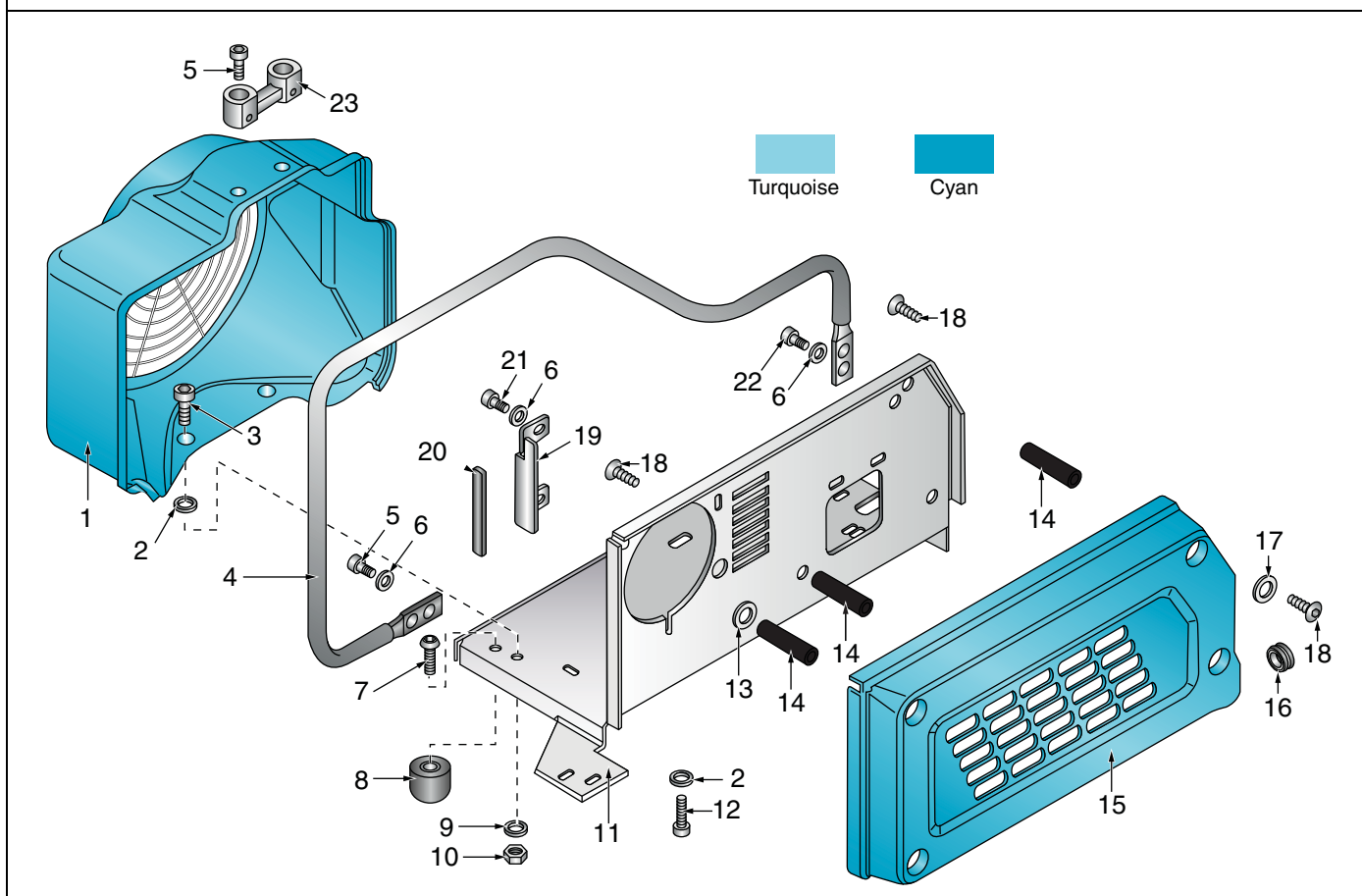
Figure 3-14 Intake Filter and Intermediate Separator


#	KIT	Qty	Part No.	Description	Notes
1	...	1	059377	Intake Filter Assembly	
2	...	1	N4870	Knurled Nut	
3	...	1	59433	Filter Cap	
4	a..	1	N4823	Filter Cartridge	
5	...	1	N1042	Hex Nut, Self Locking	
6	...	1	N287	Hex Nut	
7	...	1	N3313	Washer	
8	a..	1	N4877	O-ring	
9	...	1	59434	Filter Support	
10	...	1	65985	Gasket	
11	...	1	077323	Telescopic Intake Tube Assembly	
12	...	1	077325	Lower Intake Tube	Available only with 077323
13	...	1	077326	Upper Intake Tube	Available only with 077323

Figure 3-14 (cont.) Intake Filter and Intermediate Separator

#	KIT	Qty	Part No.	Description	Notes
14	...	1	N25393	Plug, Polyethylene	Available only with 077323
15	...	1	081800	Intermediate Separator Assembly	Includes 16 - 19 only
16	...	1	81148	Plate	
17	...	1	81643	Hollow Screw	
18	...	1	N3556	O-ring	
19	...	1	13937	Knurled Ring	
20	...	1	004479	Copper Gasket	
21	...	1	012886	Safety Valve	

Figure 3-15 Frame with Accessories



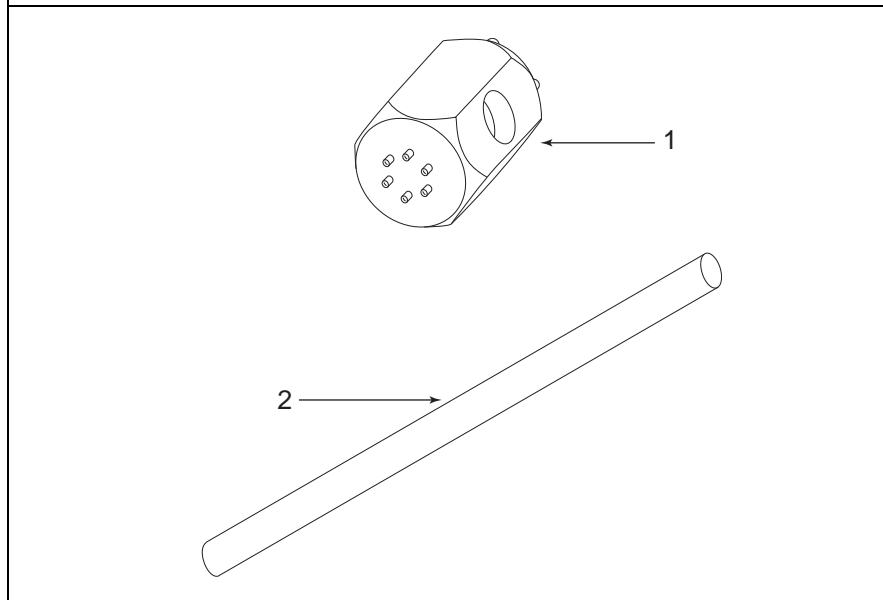
Item	Qty	Part No.	Description	Notes
1	1	85148	Fan Shroud	Cyan
—	1	79398	Fan Shroud	Turquoise
2	3	N2460	Washer	
3	2	N16508	Allen Screw	
4	1	077285	Handle	
5	6	N15769	Allen Screw	
6	6	N102	Washer	
7	4	N24916	Button Head Allen Screw	
8	4	N25609	Vibration Isolator	
9	2	N58	Washer	
10	2	N370	Hex Nut	
11	1	81622	Frame	
12	1	N19546	Allen Screw	
13	2	N25343	Washer	
14	4	77248	Spacer	
15	1	85145	V-belt Shroud	Cyan
—	1	077667	V-Belt Shroud	Turquoise

Figure 3-15 (cont.)

Frame with Accessories

Item	Qty	Part No.	Description	Notes
16	2	N15627	Grommet	
17	4	N30376	Washer	
18	8	N24918	Button Head Allen Screw	
19	1	81786	Bracket	
20	1	N16131	Rubber Isolator	
21	2	N19495	Allen Screw	
22	2	N19533	Allen Screw	
23	1	77674	Fill Hose Holder	

Figure 3-16 Special Tools



Item	Qty	Part No.	Description	Notes
1	1	082048	3rd Stage Intake Valve Removal Tool	
2	1	077781	Triplex® Wrench	

CHAPTER 4: JR II MAINTENANCE SCHEDULE



WARNING

Always shut down and decompress the complete system prior to carrying out any work on the compressor
Never repair pressure lines by soldering or welding



CAUTION

Change the purifier cartridge according to the Maintenance Schedule.
The used purifier cartridge must be disposed of according to local regulations.
Use only original spare parts for maintenance or repair work.
Check the entire system for leakage by brushing all fittings with soapy water or leak test spray.

4.1 Maintenance Record

It is recommended that all maintenance work be recorded in a service record book which shows the date and details of any maintenance work carried out. It will help avoid expensive repairs caused by missed maintenance work. If necessary to claim against the warranty, it will help to have proof that regular maintenance work has been carried out and the damage is not the result of insufficient maintenance.

4.2 Maintenance Schedule

As an example for the service record book the following Maintenance Schedule and Record of Operating Hours are provided. They may be reproduced as needed. The gray heading boxes on the Maintenance Schedule show the recommended maintenance interval and the Section of this manual for the applicable maintenance procedure. Date and signature blocks are also provided.

4.2.1 After the First 25 Operating Hours	Date	Signature
Check functioning and tightness of fill valve.		
Clean intake filter and intake filter cartridge.		
Check V-belt tension and condition.		
Check tightness of all connections and couplings		
Check cooler brackets		
Check zero position on final pressure gauge when the system is de-pressurized.		
Tighten all valve head bolts and studs.		

4.2.2 Every 125 Operating Hours	Date	Signature
Change intake filter cartridge		
Check V-belt and replace if necessary		

4.2.3 Every 2000 Operating Hours or Biennially	Date	Signature
Change synthetic based compressor oil.		
Change valves		

4.2.4 Annually or As Required	Date	Signature
Check blow-off pressure of final pressure safety valve.		
Perform breathing air quality check.		

4.2.5 After Repair Work	Date	Signature
Check functioning and tightness of fill valve.		
Clean intake filter and intake filter cartridge.		
Check condition of O-rings		

4.2.5 After Repair Work	Date	Signature
Check tension and condition of V-belt.		
Check tightness of all connections and couplings.		
Check cooler brackets		
Check zero pressure position on the final pressure gauge when de-pressurized		
Tighten valve head bolts and studs		

4.2.6 After Storage and Preservation	Date	Signature
Check functioning and tightness of filling valve		
Clean intake filter and intake filter cartridge		
Check condition of O-rings		
Check V-belt tension and condition		
Check tightness of all cooler pipes and couplings		
Check cooler brackets		
Check zero position of final pressure gauge when de-pressurized		

CHAPTER 5: PURIFICATION SYSTEM

5.1 Introduction

The purpose of all Bauer breathing air purification systems is to remove carbon monoxide, oil, water, taste and odor from the compressed air stream before final delivery.

The purpose of all Bauer industrial air purification systems is to remove oil and water from the compressed air stream before final delivery.



WARNING

Industrial Air Purification System cartridges do not remove Carbon Monoxide and must not be used in breathing air applications.

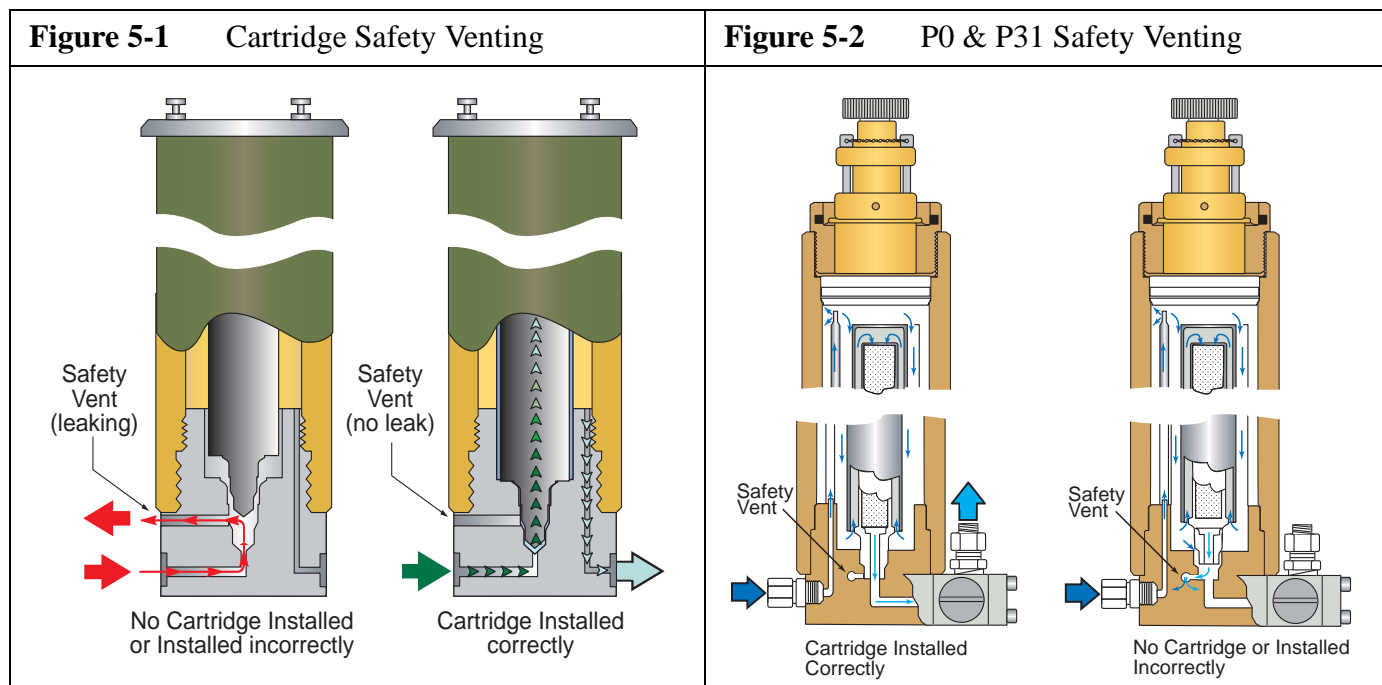
The quality of gas produced by the compressor is directly related to the quality and temperature of the gas taken in by the unit. Intake gas should as close as possible to 50 °F (10 °C) and cleanest available and as dry as possible. Bauer compressors normally add approximately 18 °F (10 °C) to the intake gas temperature. The purification cartridges perform their best at approximately 68 °F (20 °C). Adequate ventilation enhances the quality and life of the purification cartridges.

5.1.1 General Purification System Procedures

1. Keep an accurate record of operating hours to ensure exact attention to maintenance intervals
2. Change all cartridges before reactivating a compressor unit that has been out of service more than three months. Leave cartridges in the unit as long as it is out of service.
3. While out of service keep all condensate drain valves closed. Maintain a pressure of 700 - 1,100 psi (50 to 80 bar) within the system to prevent moisture from entering the compressor and purification system.

5.1.2 Chamber Safety Bore

The chambers in all Bauer purification systems are designed to prevent pressurization if the cartridge is missing, not seated properly or damaged (Figure 5-1 & Figure 5-2). Without a cartridge properly in place the safety bore is not sealed, the air escapes into the atmosphere, no pressure can be built up and thus it is ensured that unfiltered air is not supplied to the consuming device. If air is escaping from the safety bore remove and check cartridge. If necessary replace the cartridge or O-rings.



5.1.3 Manual Condensate Drainage

The condensate must be drained from the oil and water separator (final separator) before changing any cartridge, before beginning each filling procedure and in the absence of an Automatic Condensate Drain (ACD) system, every fifteen minutes during the operating procedure. This is done by slowly opening the manual condensate drain valves. They are opened approximately 1/3 of a turn to the left and held open until the condensate is completely drained. The condensate drain valves close by spring pressure but if necessary may be tightened by hand to ensure they are completely tightened.

5.1.4 Model, Serial Number and Part Number Identification

5.1.4.1 Compressor Data Plate

The model number, date of manufacture and serial number can be found on the compressor unit identification plate in the main electrical enclosure and frame.

Figure 5-3 Purification System Data Plates (typical)	
Purification System	Cartridge Installation
<div style="border: 2px solid black; padding: 10px;"> <div style="display: flex; justify-content: space-between; align-items: center;"> <div>PURIFICATION SYSTEM</div> <div>BAUER COMPRESSORS</div> </div> <div style="margin-top: 10px;"> MODEL NO. <input style="width: 150px;" type="text"/> MAX. PRESSURE <input style="width: 100px;" type="text"/> psig AIR PROCESSED <input style="width: 100px;" type="text"/> cu. ft. O-RING <input style="width: 100px;" type="text"/> BACK-UP RING <input style="width: 100px;" type="text"/> </div> <div style="text-align: right; margin-top: 10px;">LBL-0191</div> </div>	<div style="border: 2px solid black; padding: 10px;"> <div style="display: flex; justify-content: space-between; align-items: center;"> <div>CARTRIDGE TO BE INSTALLED</div> <div>BAUER COMPRESSORS</div> </div> <div style="margin-top: 10px;"> CARTRIDGE FOR <input style="width: 150px;" type="text"/> CARTRIDGE NO. <input style="width: 150px;" type="text"/> </div> <div style="font-size: small; margin-top: 10px;"> 1328 Azalea Garden Road - Norfolk Virginia 23502-1944 Phone: (757) 855-6006 Fax: (757) 855-8224 </div> <div style="text-align: right; margin-top: 10px;">LBL-0044</div> </div>

5.1.4.2 Purification System Data Plate

Refer to the compressor unit purification system data plate (Figure 5-3) on the compressor front to determine your purification system model and specifications.

5.1.4.3 Cartridge Installation Data Plate

The function performed by each chamber in the purification system is determined by the type of cartridge installed in that chamber. Refer to the cartridge installation data plate on the chamber to determine the purpose and part number of the cartridge installed in that chamber. (Figure 5-3).

5.1.5 Breathing Air Purification System Configurations

Purification System	Number and Type of Cartridges			Processing Capacity
	Dryer	Purification	Securus®	cubic ft (ft) ³
P0	Combined			3,200
P1	...	1	...	15,000
P2	...	1	...	40,000
P2 with Securus®	1	67,000
P4	1	1	...	60,000
P5	1	1	...	90,000
P5 with Securus®	1	...	1	150,000
P10	2	1		140,000
P10 with Securus®	2	...	1	230,000
P12 ^a	1	1		420,000
P14 ^a	2	1		650,000
P31	Combined			11,760
P41	...	1		28,700
P41 with Securus®	1	47,000
P42	1	1	...	64,000
P42 with Securus®	1	...	1	107,000
P43	2	1	...	100,000
P43 with Securus®	2	...	1	164,000
P81	1	1		124,000
P81 with Securus®	1	...	1	198,000

a. P12 and P14 have the Securus® Electronic Moisture Monitor System as standard equipment.

5.1.6 Industrial Purification System Configurations

Purification System	Number and Type of Cartridges			Processing Capacity cubic ft (ft) ³
	Dryer	Purification	Securus®	
P0	Combined			3,200
P1	...	1	...	15,000
P2	...	1	...	40,000
IP2 with Securus®	1	67,000
P4	1	1	...	60,000
P5	1	1	...	90,000
IP5 with Securus®	1	...	1	150,000
P10	2	1		140,000
IP10 with Securus®	2	...	1	230,000
P31	Combined			11,760
IP41 with Securus®	1	47,000
IP42 with Securus®	1	...	1	107,000
IP43 with Securus®	2	...	1	164,000

5.1.7 Cartridge Operating Life

Every Bauer purification system is designed to process a certain volume of air/gas before the cartridges require replacement. By using special test equipment that measures the quality of air/gas at the outlet any quality reduction may be detected. However as most compressor owners do not have this test equipment the recommended method of determining cartridge operating life is to maintain a written record of the volume of air/gas processed by the purification system.

Each Bauer compressor block is rated to produce a standard volume of air per minute and by using this number and the air processing capability of the purification system it is possible to calculate the maximum operating hours before the cartridges need to be replaced. See Paragraph 5.1.7.1 for the method of determining this figure.

The ambient air temperature and its ability to cool the compressor will effect the operating life of the cartridge. See Paragraph 5.1.7.2 for the method of calculating this adjustment factor.

The optimum place to measure the temperature is at the inlet to the final separator as this best reflects the temperature of the air as it enters the chambers. Experience has shown that this temperature is approximately 18 °F (10 °C) above the ambient temperature. Therefore for the purpose of calculating cartridge operating life use the Ambient Air Temperature plus 18 °F.

A form titled Air Purification Cartridge Operating Hours is found in Paragraph 5.1.7.3 and in the Appendices. It is used for recording the ambient temperature, operating time and adjustment factor. It

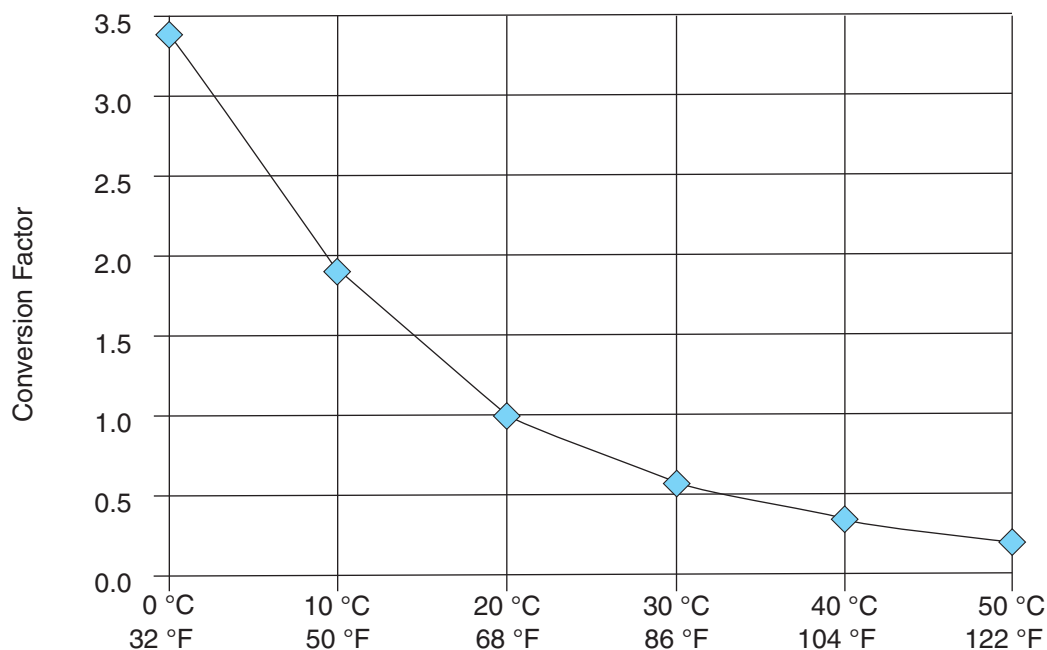
is suggested that it be copied, placed in a protective folder and kept with the unit to record the adjusted operating hours. An example of how this form is used is shown in Figure 5-5.

5.1.7.1 Calculating the Maximum Cartridge Operating Hours

1. From the purification system data plate (See Figure 5-3) on the purification chamber determine the Air Processed (cu.ft.)
2. From the paragraph titled Compressor Specifications in the instruction manual for your compressor unit determine the Charging Rate in SCFM of your compressor.
3. Divide the Air Processed by the Charging Rate to obtain the Maximum Operating Time in minutes
4. Divide the Maximum Operating Time in minutes by 60 to obtain the Maximum Operating Hours.
5. Record the answer on the Air Purification Cartridge Operating Hours form.

5.1.7.2 Calculating the Adjusted Cartridge Operating Hours

1. Using the Air Purification Cartridge Operating Hours form record the Date, Operating Hours and Ambient Air Temperature plus 18 °F.
2. Using either the graph or the chart in Figure 5-4 determine the Correction Factor.
3. Divide the Operating Hours by the Correction Factor and record it under the column labeled Today.
4. Add the hours recorded in Today to the previous Total and record it as the current Total.
5. When the Total approaches the Maximum Operating Hours replace the Cartridges.

Figure 5-4 Correction Factor for Cartridge Operating Hours

°C [(°F - 32) x 5/9]	°F [°C x 9/5 + 32]	Correction Factor
50	122	0.21
40	104	0.34
30	86	0.58
20	68	1.00
10	50	1.81
0	32	3.44

Figure 5-5 Example Record of Adjusted Operating Hours

Date	Operating Hours	Ambient Temp. during Compression +18 °F	Correction Factor	Adjusted Cartridge Hours	
				Today	Total
10/19/04	8	92°F (33 °C)	0.5	16.00 $\left(\frac{\text{Op hrs}}{\text{Corr. factor}} \right)$	16.00
11/01/04	4	45°F (7.2 °C)	2.25	1.78	$\left(\frac{\text{Total hrs}}{\text{+Today hrs}} \right)$ 17.78

5.1.7.3 Air Purification Cartridge Operating Hours Form

[illegible]

5.2 P0 Purification System

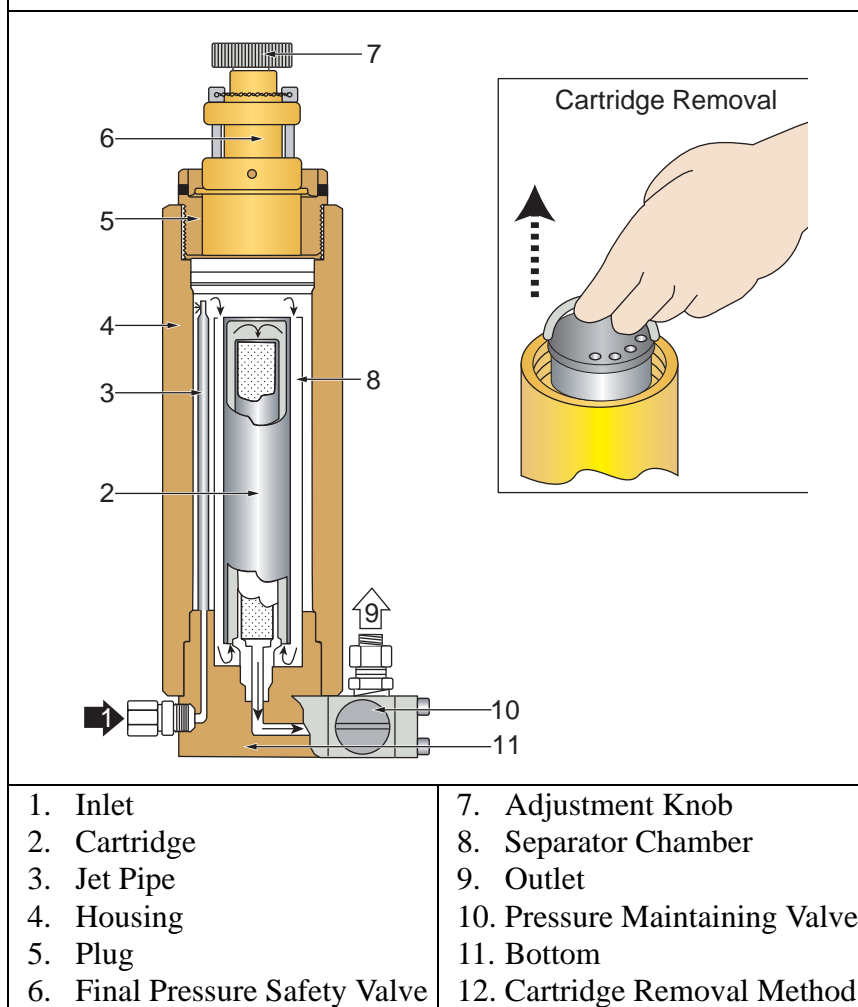
5.2.1 Description

The P0 Purification System consists of a separator and a cartridge chamber. In the separator surrounding the cartridge chamber, liquid oil and water particles are separated from the compressed air by a pipe nozzle. Residual oil and water particles are then removed by the filter cartridge and the air leaving the P0 Purification System is free of water, oil, taste and smell.

Figure 5-6 P0 Purification Chamber



Figure 5-7 P0 Purification System Cross Section



5.2.2 CO Indicator (optional)

5.2.2.1 Visual CO & Moisture Indicator

Under normal conditions the element in the moisture indicator is blue and changes to pink with elevated levels of moisture (40 - 60% humidity). Carbon Monoxide is present if the indicator turns tan to dark brown.

Figure 5-8 CO & Moisture Indicator

5.2.3 Maintenance

5.2.3.1 Replacing the Cartridge

See Figure 5-7.

1. De-pressurize system before starting any maintenance, by opening the condensate drain valve and bleed valve.
2. Unscrew plug (5) on top of the housing (4).
3. Extract old cartridge. (2)
4. Dry inside of the housing (4) with a clean cloth. Check for corrosion. Replace if necessary.
5. Lubricate threads, O-rings and threaded portion of replacement cartridge with petroleum jelly.
6. Insert new cartridge and secure in place with plug (5).

NOTICE

The used filter cartridge must be disposed of in accordance with local regulations.

5.2.3.2 Chamber Replacement Interval



WARNING

The P0 Purification System is subject to dynamic loading. It is designed for a certain number of load cycles. A load cycle equates to an abrupt pressure loss caused by draining the condensate. The P0 Purification System must be replaced after reaching the maximum number of load cycles, otherwise the housing may fail due to material fatigue.

The maximum number of load cycles for the P0 Purification Assembly is 45,000 if operated at 5,000 psi (300 bar) or 63,000 if operated at 3,200 psi (225 bar).

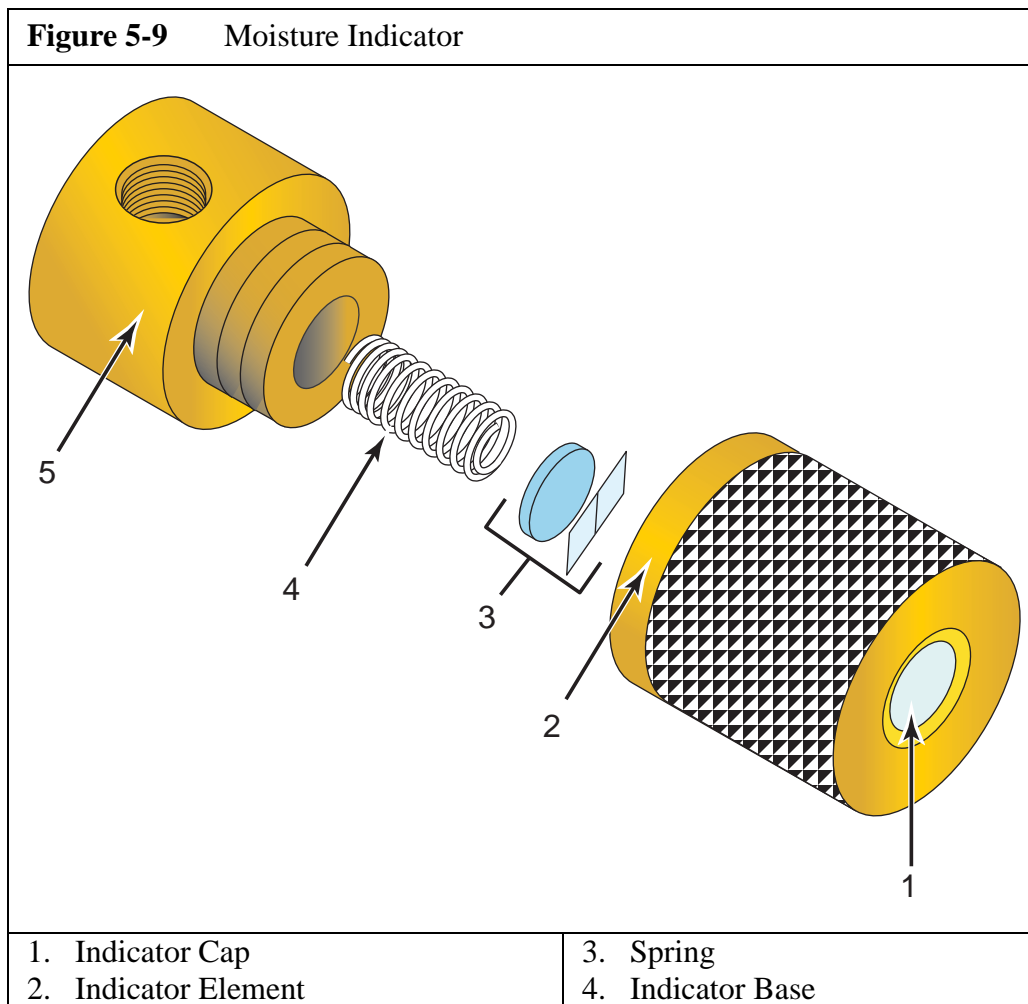
If the number of load cycles of four per hour (i.e. the condensate is drained every fifteen minutes) is not exceeded then the maximum number of operating hours before the P0 Purification System must be

replaced is 11,250 hours at 5,000 psi (300 bar). To avoid exceeding the maximum number of load cycles the operating hours should always be recorded.

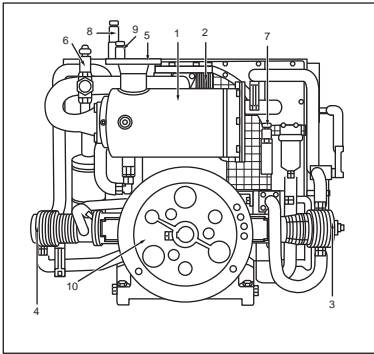
5.2.3.3 CO & Moisture Indicator

Each CO & moisture indicator element is stamped with a date. The elements have a shelf life of one year. Replace the element annually or if element has changed color. To replace the indicator element see Figure 5-9 and proceed as follows:

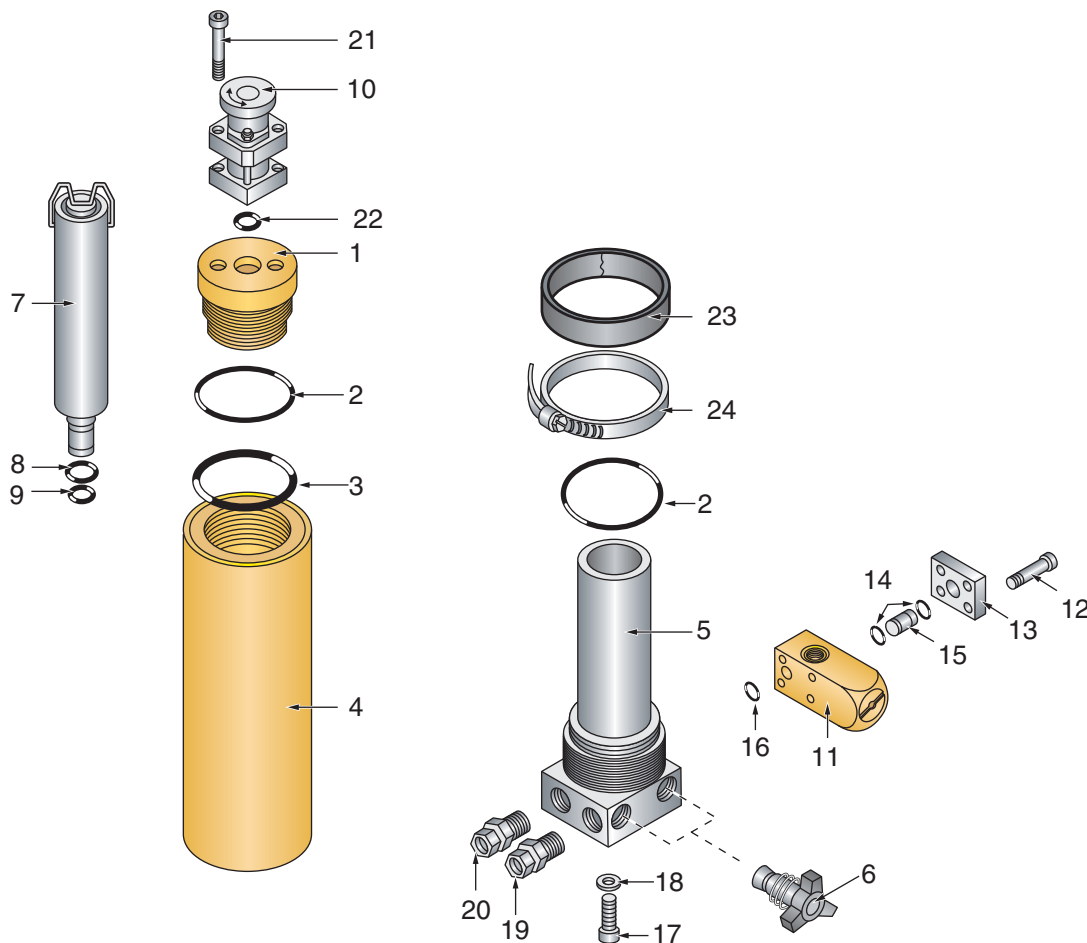
1. Release the pressure from the system.
2. Unscrew the indicator cap (2) from the indicator base (5).
3. Remove the old element (3).
4. Place the new indicator element with the active side facing the indicator window (1).
5. Reinstall the indicator cap (2), ensuring the spring (4) is in place and holding the indicator element against the window.
6. Tighten the indicator cap (2) hand tight.



This page is inserted to provide proper page sequencing

[illegible][illegible]

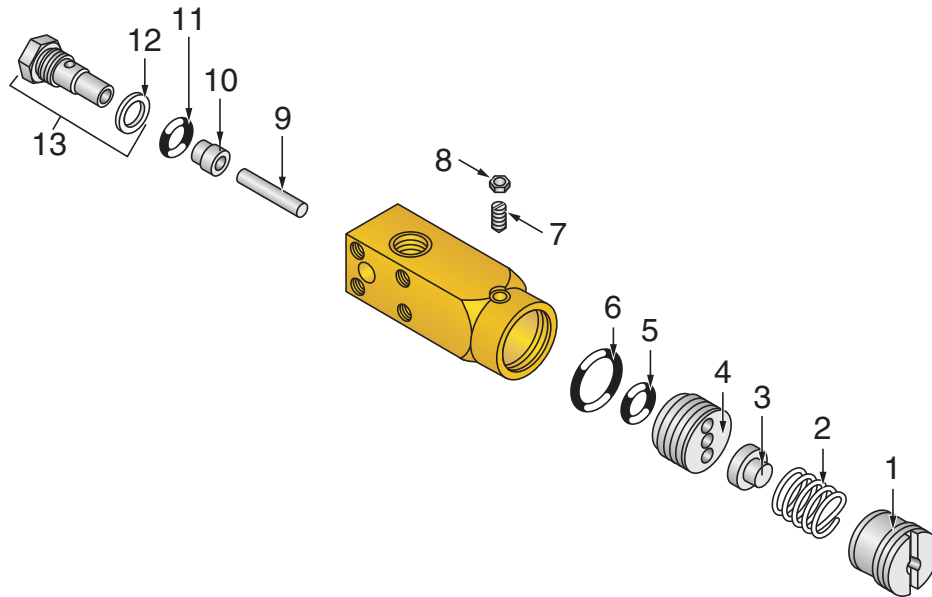
5.2.4 Replacement Parts List

Figure 5-10 P0 Purification System Parts List


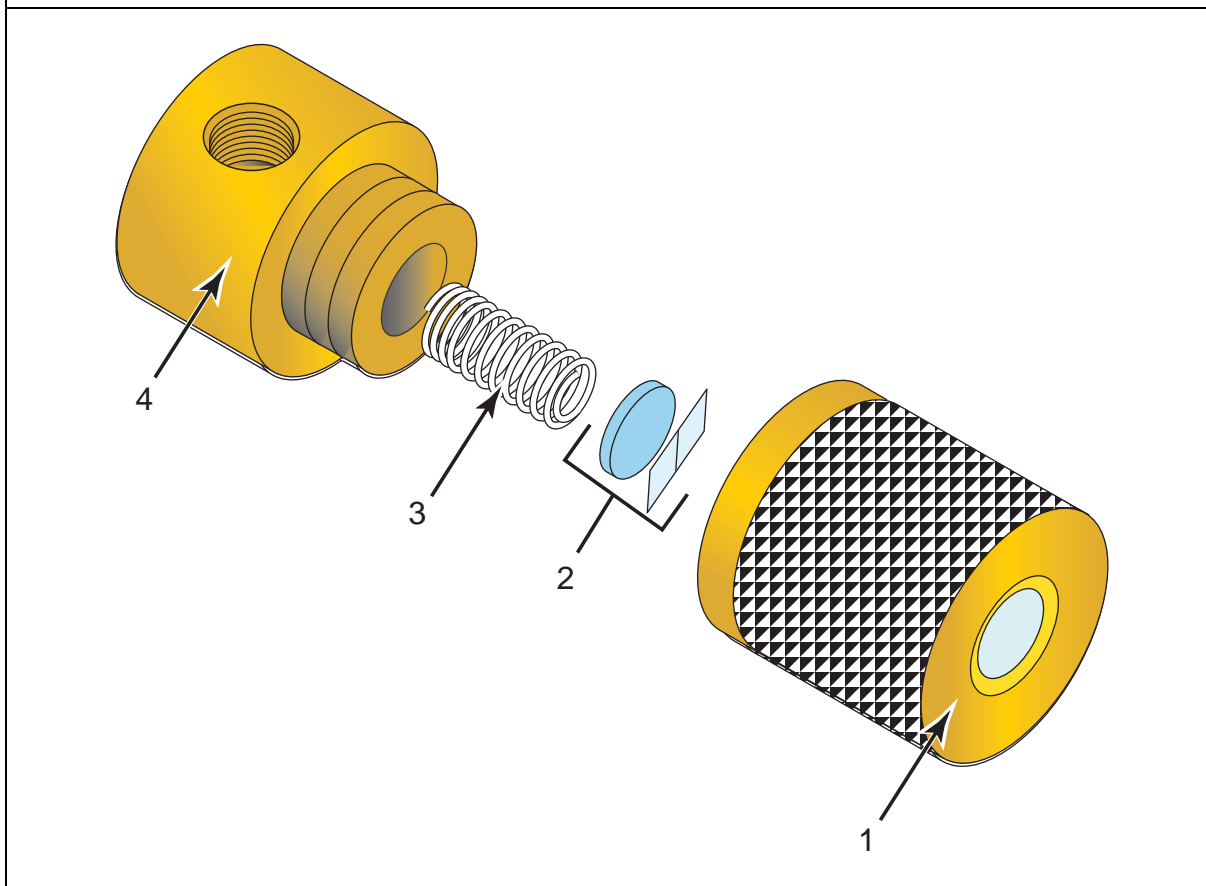
Item	Qty	Part No.	Description	Notes
◆	1	077159-D-V001	P0 Purification System	
1	†	...	Plug	Available only with 077159-D-V001
1	2	N4586	O-ring	
2	1	N25212	O-ring	
2	†	...	Housing	Available only with 077159-D-V001
3	†	...	Bottom	Available only with 077159-D-V001
3	1	073793	Condensate Drain Tap Assembly	
4	1	059183A	Cartridge Assembly	Includes Items 8 and 9
5	1	N4566	O-ring	
6	1	N3824	O-ring	
7	1	059410	Safety Valve	
8	1	078538	Pressure Maintaining Valve	
9	4	N19541	Socket Head Cap Screw	

Figure 5-10 (cont.) P0 Purification System

Item	Qty	Part No.	Description	Notes
10	1	57937	Cover	
11	2	N16591	O-ring	
12	1	57904	Connection Pipe	
13	1	N24788	O-ring	
14	2	N19547	Allen Screw	
15	2	N58	Washer	
16	1	N24910	Male Run Tee Connector	
17	1	N20287	Male Connector	
18	4	SCR-0139	Allen Screw	
19	1	N4882	O-ring	
20	1	N15550	Rubber Wrap	
21	1	N15500	Clamp	

Figure 5-11 Pressure Maintaining Valve


#	KIT	Qty	Part No.	Description	Notes
♦		1	78538	Pressure Maintaining Valve	
1	...	1	57935	Adjustment Screw	
2	...	1	2623	Spring	
3	...	1	79199	Seat	
4	...	1	78536	Spring Seat	
5	.b.	1	N25503	O-ring	
6	.b.	1	N24927	O-ring	
7	...	1	N4465	Stud	
8	...	1	N3837	Hex Nut	
9	.b.	1	77502	Pressure Pin	
10	.b.	1	78688	Valve Piston	
11	.b.	1	N23166	O-ring	
12	.b.	1	N25018	Gasket	
13	...	1	85584	Valve Seat	Includes Item 12

Figure 5-12 CO & Moisture Indicator


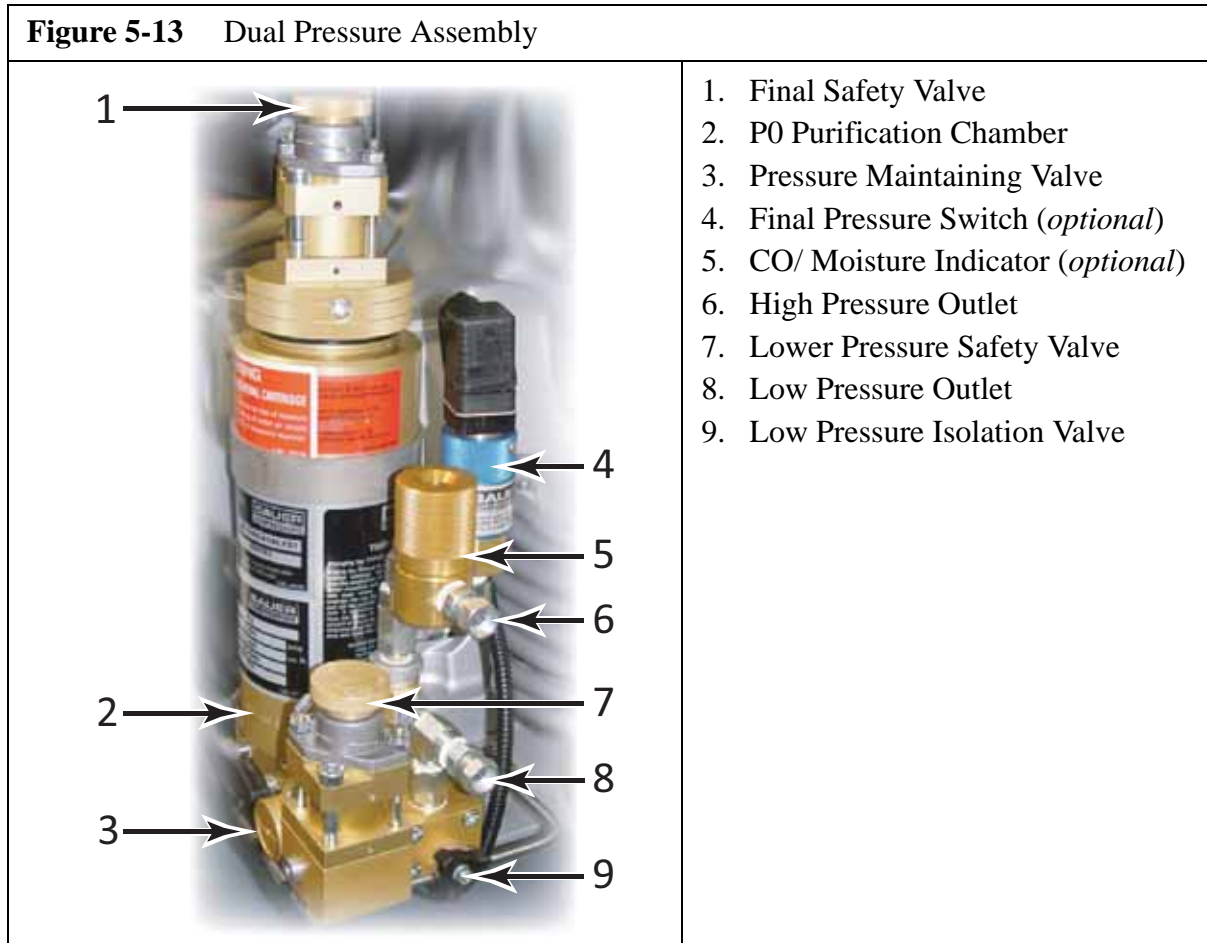
Item	Qty	Part No.	Description	Notes
◆	1	IND-0015		
1	†	...	Indicator Cap	Available only with IND-0015
2	1	ELM-0056	Indicating Element	CO & Moisture indicator
3	†	...	Spring	Available only with IND-0015
4	†	...	Indicator Base	Available only with IND-0015
N.S.	1	RNG-0097	O-ring	located between #2 and glass of #1
N.S.	1	RNG-0106	O-ring	located at base of threads of #4

5.3 Dual Pressure Control Assembly

5.3.1 General

The dual pressure assembly is optional and may not be on every model. This assembly must be requested when ordering. The purpose of the dual pressure assembly is to provide two outlets with separate preset pressures. After the compressed air has been processed it travels to the high pressure outlet. The final pressure switch is attached to the assembly also. If the lower preset pressure is desired the lower pressure isolation valve must be opened. The compressed air then travels through the safety valve and it then flows to the low pressure outlet. The safety valve ensures that pressure higher than the low pressure setting is bled off.

Figure 5-13 Dual Pressure Assembly



5.3.2 Replacement Parts

Figure 5-14 Dual Pressure Assembly


Item	Qty	Part No.	Description	Notes
1	1	077159-D-V001	P0 Purification System	(See Chapter 5)
2	1	SWT-0257	Final Pressure Switch	3,000 - 7,500 psi, <i>(optional)</i>
3	1	IND-0015	CO/Moisture Indicator	<i>(optional)</i>
with	1	ELM-0056	Indicating Element	
4	1	059410	Safety Valve, Lower Pressure	5,000 psi (330 bar)
5	1	073796	Switchover Device	2,900 / 4,350 psi (200 / 300 bar)

CHAPTER 6: MISCELLANEOUS

6.1 Safety Valves

6.1.1 Description

All three compressor stages are protected by safety valves. The first and second stage safety valves are adjusted to the correct pressure and sealed at the factory. The final stage safety valve is mounted on top of the P0 Filter System and is adjusted to the operating pressure of the unit. The pressure settings are as follows: 1st stage - 116 psi (8 bar); 2nd stage - 1,160 psi (80 bar); Final stage - As noted on order.

6.1.2 Maintenance

6.1.2.1 Checking Function

The final pressure safety valve (See Figure 6-1) has to be checked regularly. For this purpose the final safety valve can be vented manually. Turn the knurled knob on top of the valve clockwise until the valve blows off. This just ensures that the valve is functional and will release pressure in case of malfunction.

6.1.2.2 Checking Blow Off Pressure

Check the blow off pressure of the final pressure safety valve in accordance with the maintenance schedule. Run the unit with shut off valve closed until final pressure safety valve blows off. Check blow off pressure of the safety valve at the Pressure Gauge.

Figure 6-1 Gauges

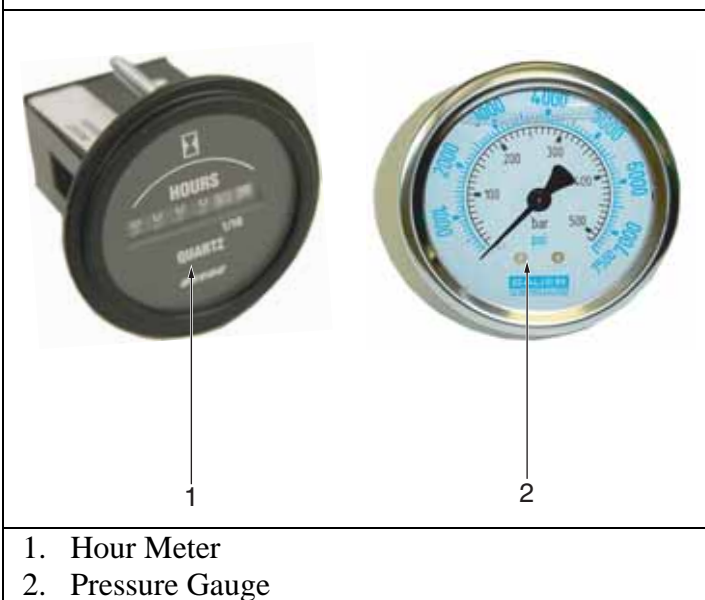


Figure 6-2 Final Pressure Safety Valve



6.2 Pressure Gauge

6.2.1 Maintenance

We recommend checking the accuracy of Final Pressure Gauge from time to time. Slight deviations during operation are normal and can be ignored. Excessive inaccuracy will require the pressure gauge to be replaced.

6.3 Cooling System

6.3.1 General

The cylinders of the compressor block, the intermediate coolers, and the after-cooler are all air cooled. For this purpose the compressor is equipped with a fanwheel connected to the crankshaft at the end opposite the V-belt pulley. It draws cooling air through the fanwheel cover from the surrounding atmosphere. To ensure maximum compressor unit life, provisions must be made for an adequate supply of cooling air during installation of the compressor unit. For the same reasons the unit must not be operated above the maximum ambient temperature.

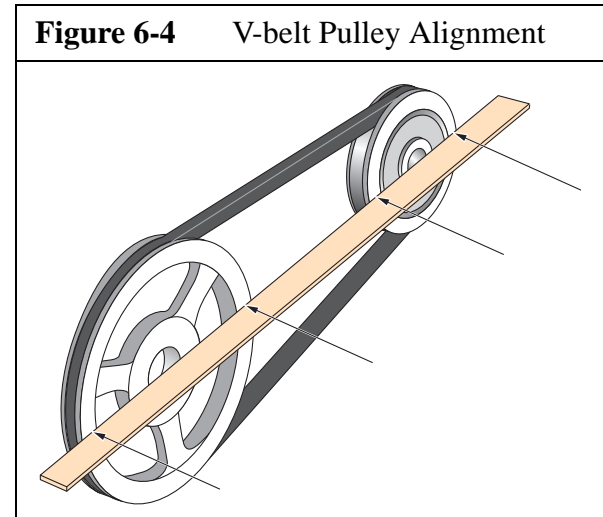
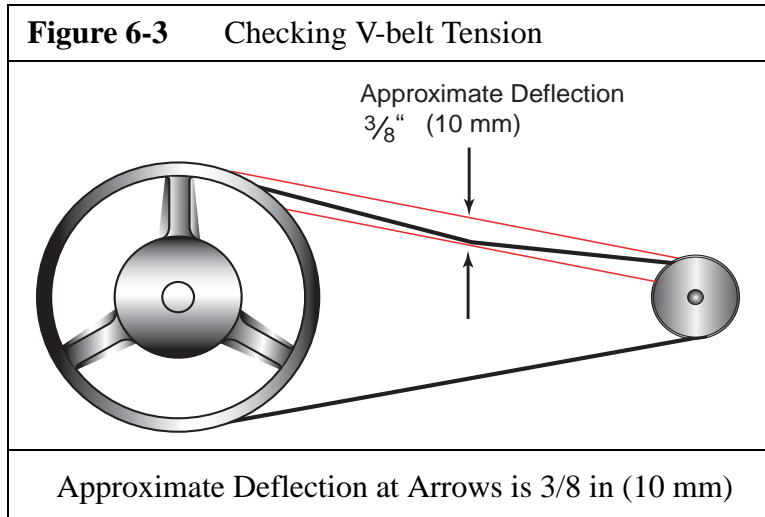
6.4 Compressor Drive System

6.4.1 Description

The prime mover which is either an electric motor or a gasoline engine, drives the compressor with a V-belt. The prime mover is mounted on an adjustable base plate and requires periodic adjustment to ensure proper V-belt tension.

6.4.2 Checking the Drive Belt

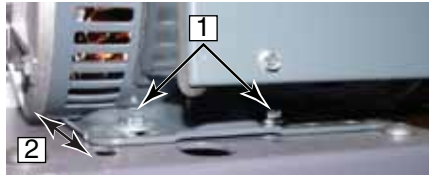
1. The proper belt tension for the V-belt is where the belt does not slip under a full load.
2. A rough value for this is when the V-belt deflects Approximately $3/8$ " (10 mm) when pressed with thumb pressure between the two pulleys. See Figure 6-3.
3. Readjust a new V-belt after the first twenty-five operating hours.
4. Check for damage or wear every 125 operating hours



6.4.3 V-belt Tension Adjustment

1. Slightly loosen the bolts holding the prime mover onto the base plate.

Figure 6-5 Electric Motor Adjustment



2. Adjust motor position until the V-belt tension is correct.
3. Tighten the mounting bolts.
4. Operate the unit for approximately five minutes. Stop the prime mover, check V-belt tension and readjust if necessary.
5. After the V-belt tension is correct and the prime mover mounting bolts are tight, check to verify that both pulleys are aligned. This is necessary to avoid excessive wear on the V-belt and pulleys.
6. Hold a straight edge against the compressor and prime mover pulleys as shown in Figure 6-4. The straight edge must touch the pulleys at the four points indicated by the arrows. If it does not, adjust the prime mover position until it does.

6.4.4 Electric Motor Maintenance

The electric motors require no maintenance except for external cleaning.

6.5 Electrical System

6.5.1 Description

The electrical equipment for the -E1 or -E3 consists of the following.

- Single Phase Electric motor - E1
- Three Phase Electric motor - E3
- Electrical wiring with appropriate switches and protective devices is provided by the customer.

6.5.2 Drive Motor

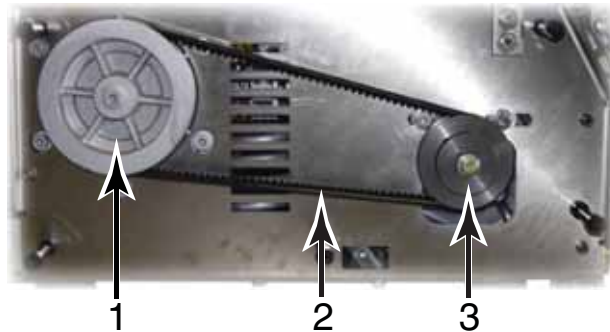
The JR II-E1 compressor unit is driven by a single phase, electric motor.

The JR II-E3 compressor unit is driven by a three phase, electric motor.

For the safety of the operating personnel all voltage carrying parts have protective covers.

6.6 JR II Electric Drive Replacement Parts

Figure 6-6 JR II, Electric Drive



Item	Qty	Part No.	Description	Notes
Junior II, Single Phase				
1	1	JR II	Air Compressor	
2	1	BET-0202	V-belt	
3	1	SHE-0292	V-belt Sheave	
N.S.	1	MTR-0219	Electric Motor	1.5 Hp, 60 Hz
or	1	MTR-0025	Electric Motor	2 Hp, 60 Hz
or	1	MTR-0093	Electric Motor	3 Hp, 60 Hz
or	1	MTR-0223	Electric Motor	2 Hp, 110 V, 50 Hz
Junior II, Three Phase				
1	1	JR II	Air Compressor	
2	1	BET-0172	V-belt	
3	1	SHE-0301	V-belt Sheave	60 Hz
or	1	SHE-0295	V-belt Sheave	Yachting, 50 Hz
N.S.	1	MTR-28F2	Electric Motor, ODP	3 Hp, 60 Hz
or	1	MTR-0244	Electric Motor, TEFC	3 Hp, 60 Hz
or	1	MTR-0182	Electric Motor, ODP	3 Hp, 50 Hz (Yachting)







CHAPTER 7: APPENDIX**7.1 Safety****7.1.1 General Safety Precautions**

- Read the operating manual before installing or operating this compressor unit. Follow appropriate handling, operation and maintenance procedures from the very beginning. The maintenance schedule contains measures required to keep this compressor unit in good condition. Maintenance is simple, but must be executed regularly to achieve safe operation, maximum efficiency and long service life.
- We recommend that all maintenance work be recorded in a service book, showing the date and details of the work carried out. This will help to avoid expensive repairs caused by missed maintenance work. If it is necessary to make a Claim against the warranty, it will help to have proof that regular maintenance has been carried out and that the damage has not been caused by insufficient maintenance.
- This compressor unit must be installed, operated, maintained and repaired only by authorized, trained and qualified personnel.
- Consult and follow all OSHA, NEMA, ASME and local regulations, laws and codes covering the installation and operation of this compressor and accessories before operating the unit.
- Do not operate this unit in excess of its rated capacity, speed, pressure, temperature, or otherwise than in accordance with the instructions contained in this manual. Operation of this unit in excess of the conditions set forth in this manual will subject the unit to limits which it may not be designed to withstand.
- Keep safety guards in place.
- Do not modify the compressor or its systems.
- Do not wear loose clothing around machinery. Loose clothing, neckties, rings, wrists watches, bracelets, hand rags, etc. are potential hazards.
- Provide adequate fire protection. Make sure fire extinguishers are accessible. Select alternate routes of escape and post such routes.
- Make sure you are equipped with all required safety equipment; hearing protection, safety glasses, hard hats, safety shoes and fire extinguisher.
- Visually inspect the unit before starting. Remove and or replace any loose or broken components, tools, valves, missing equipment, etc.
- Do not tamper with, modify, or bypass safety and shutdown equipment.
- Do not tighten or adjust fittings or connections under pressure.
- The use of plastic pipe or rubber hose in place of steel tube or iron pipe, soldered joints or failure to ensure system compatibility of flex joints and flexible hose can result in mechanical failure, property damage, and serious injury or death.
- The use of plastic or nonmetallic bowls on line filters without metal guards can be dangerous.
- Replace damaged fan blades promptly. Fan assemblies must remain in proper balance. An unbalanced fan can fly apart and create an extremely dangerous condition.

- Allow the compressor to cool before servicing. Whenever the compressor is shut down and overheating is suspected, a minimum period of 15 minutes must elapse before opening the crankcase. Premature opening of the crankcase of an overheated unit can result in an explosion.
- Incorrect placement of the inlet and pressure valves in a compressor cylinder head can cause an extremely dangerous condition. Refer to the appropriate section of this manual before installing or replacing valves.
- Before doing any work involving maintenance or adjustment, be sure the electrical supply has been disconnected, and the complete compressor system has been vented of all internal pressure. Failure to follow these warnings may result in an accident causing personal injury and/or property damage.
- Before working on the electrical system, be sure to disconnect the electrical supply from the system at the circuit breaker or other manual disconnect. Do not rely on the ON/OFF switch to disconnect the electrical supply.
- Installer must provide an earth ground and maintain proper clearance for all electrical components.
- All electrical installation must be in accordance with recognized national, state, and local electrical codes.
- Do not use gasoline, diesel fuel or other flammable products as a cleaning solution.
- A compressor which has been used for gas service is unsuitable for air applications. Should the purchaser and/or user proceed to use the compressor for air service after it has been used for gas, the purchaser and/or user assumes all liability resulting therefrom without any responsibility being assumed by Bauer Compressors, Inc. The purchaser is urged to include the above provision in any agreement for resale of this compressor.
- The use of repair parts other than those listed in this manual or purchased from Bauer Compressors, Inc. may create unsafe conditions over which Bauer has no control. Such unsafe conditions can lead to accidents that may be life-threatening, cause substantial bodily injury, and/or result in damage to the equipment. Therefore, Bauer Compressors, Inc. can bear no responsibility for equipment in which non-approved repair parts are installed

7.1.2 Safety Warning Labels

Notes, labels and warning signs are displayed on the compressor unit according to model, application or equipment and may include any of the following.

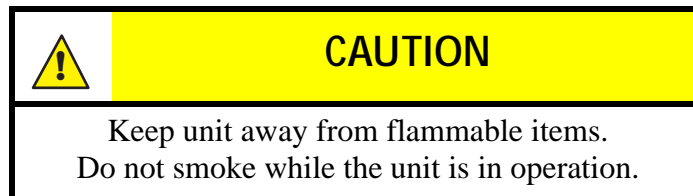
	<p>HOT SURFACES DO NOT TOUCH!</p> <p>Danger of burning if cylinders, cylinder heads, or pressure lines of individual compressor stages are touched.</p>
	<p>HIGH VOLTAGE!</p> <p>Life threatening danger of electrical shock. Maintenance work on electric units or operating equipment should be carried out by a qualified electrician or by a person supervised by a qualified electrician according to electrical regulations.</p>
	<p>AUTOMATIC COMPRESSOR CONTROL UNIT MAY START WITHOUT WARNING!</p> <p>Before carrying out maintenance and repair work, switch off at the main switch and ensure the unit will not restart.</p>
	<p>THE INSTRUCTIONS MUST BE READ BEFORE OPERATING UNIT!</p> <p>The instruction manual and all other applicable instructions, regulations, etc. must be read and understood by the operating personnel before using the machine.</p>
	<p>HEARING PROTECTION MUST BE WORN!</p> <p>Hearing protectors must be worn when working on a machine which is running.</p>
	<p>DIRECTION OF ROTATION!</p> <p>When switching on the machine, check the arrow to ensure correct direction of rotation by the drive motor.</p>

7.2 Installation

7.2.1 Corrosion Resistance

- The compressor unit is not resistant to the corrosion caused by exposure to seawater.
- After operation in a salt air environment the unit should be sprayed with anticorrosion protection (e.g. Quicksilver Corrosion Guard).
- All Junior II units should be operated in an area with sufficient ventilation and stored below decks after operation

7.2.2 Outdoor Location



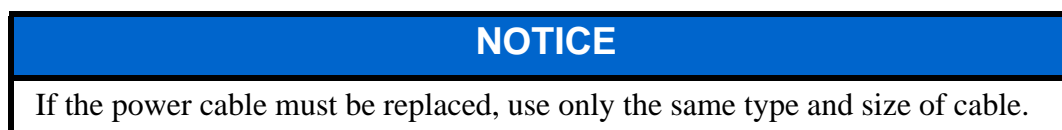
1. Locate the unit so it is level.
2. Locate the unit so that the prevailing wind blows any exhaust fumes away from the unit.
3. Reposition the intake as soon as the wind direction changes.
4. Allow no vehicles to be in the direct vicinity of the intake while their engines are running.
5. Do not operate the unit in the vicinity of an open fire or combustion type heater.
6. Immediately after start-up check rotation direction for agreement with arrow on the compressor unit

7.2.3 Indoor Location

1. Ensure an adequate supply of fresh air
2. This air must be free of exhaust fumes and hazardous vapors (e.g. smoke, solvents, etc.).
3. If possible install the unit so that the compressor cooling fan can get fresh air from the outside, for instance through an opening in the wall.
4. Ensure that an adequate exhaust air opening is provided.
5. When locating the compressor in a small room where natural ventilation is not ensured, positive measures must be taken to provide artificial ventilation. (This also applies when other items with high temperatures operating in the same room)
6. Immediately after start-up check rotation direction for agreement with arrow on the compressor unit

7.2.3.1 Electrical Installation

Observe the following when installing electrical motor driven units.

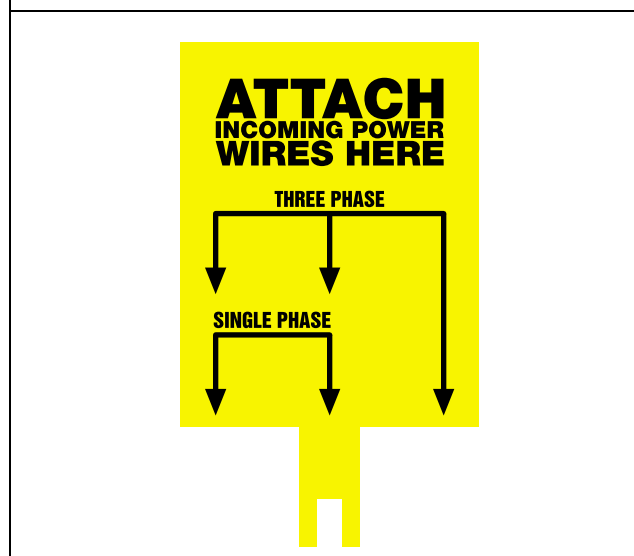


1. Comply with the regulations of the local electrical power company.
2. Arrange for the equipment to be connected by an electrician to ensure correct installation of the electrical wiring.
3. For units which are permanently installed, a main switch must be provided. The main switch must have a minimum contact gap of 1/8" (3 mm) on each pole.
4. Fuse the motor correctly, use slow-blow fuses only.

Table 7-1: Slow Blow Fuse Values

Supply Voltage		110	127	220	230	240	250	380	415	440
3 Phase	Amps	25	25	16	16	16	16	10	10	10
1 Phase	Amps	35	35	20	20	20	20	-	-	-

The label shown in Figure 7-1 indicates the where the incoming power is connected to the compressor unit electrical enclosure. This label must be removed before using the equipment.

Figure 7-1 Incoming Power Wiring Label


7.3 Storage and Preservation

7.3.1 Storage

If the compressor is removed from service for more than six months, the unit should be preserved and stored in accordance with the following:

- Store the unit indoors in a dry, dust-free room.
- Only cover the compressor with plastic if it is certain that no condensation will form under the cover.
- Even if the unit is kept covered the outside of the unit should be cleaned.
- If this procedure cannot be followed or if the compressor is going to be removed from service for more than two years, please contact our Technical Service Department for special instructions

NOTICE

The compressor is not salt-water resistant!
If it is not in use keep the unit in a dry place.

7.3.2 Preservation**7.3.2.1 Preparation for Preservation**

Before preserving the compressor unit, run it until it reaches the specified service pressure then keep it running for approximately 10 minutes. Then proceed as follows:

1. Check all pipes, filters, and valves (also safety valves) for leakage.
2. Tighten all couplings, as required.
3. Open the fill valve or the outlet valve and run the compressor at the set minimum pressure (Pressure Maintaining Valve) for approximately 5 minutes.
4. After this 5 minutes, shut the system down. Drain condensate from the separators. Depressurize the unit. Shut fill valves.
5. Open filters and grease threads.
6. Ensure the filter cartridge remains in the filter. This will prevent oil from entering filling lines as a result of preservation procedures.
7. Remove intake filter from the manifold and all intake lines from valve heads.
8. Let the compressor cool down.

7.3.2.2 Preserving the Compressor

1. Turn the compressor on and spray approximately 2 teaspoons (10 cc) of Bauer P/N OIL-0001 into the valve head inlet port while the compressor is running. Do not let the compressor warm up.
2. Shut the compressor unit off.
3. Close all valves.
4. Place the dust cap onto the inlet port.

7.3.2.3 Preserving the Motor or Engine

Preserve the electric motor or gasoline engine according to the instructions of the motorengine manufacturer.

7.3.2.4 Preventive Maintenance During Storage

Run the compressor **once every 6 months** as described in the following:

1. Remove the dust cap from the inlet port and insert the intake filter.
2. Open the fill valves or the outlet valve and let the unit run for approximately 10 minutes or until the pressure gauges indicate the correct values.
3. Stop the compressor.

4. Open condensate drain valves and release compressed air. Close condensate drain valves again.
5. Reapply preservation procedures. (See Paragraph 7.3.2.2)
6. Changing the Lube Oil for Preservation.
7. After prolonged storage, the oil will age in the compressor and engine. It should be drained and replaced after a period of no more than two years.
8. This two year period is shortened if the compressor does not receive preventive maintenance during storage.
9. After changing the oil, turn the compressor and the engine by hand or run them for the required period.
10. Check the lubrication of the compressor when putting the unit into operation every six months or when turning the compressor. The oil pump is functioning properly when oil can be seen flowing through the sight glass of the oil pressure regulator and if the oil pressure gauge indicates the prescribed pressure.

7.3.2.5 Reactivating the Compressor Unit.

1. Remove the dust cap from the inlet port and insert the intake filter.
2. Check the oil level of the compressor.
3. Check the electric motor or gasoline engine according to the manufacturer's instructions.
4. Open the purifier and change the filter cartridge.
5. Run the compressor with open fill valve or outlet valve until warm, approximately 10 minutes.
6. Check the oil pressure on the pressure gauge. If there is any fault, check the lubrication of the compressor.
7. When the unit is warm, close the fill valve or outlet valve and run the unit up to the final pressure. Indicated when the final pressure safety valve blows.
8. Check the inter-stage safety valves for leakage.
9. Establish cause of any faults in the Troubleshooting Table.
10. Stop the system when running properly, the compressor is then ready for operation.

7.4 Tables and Reference Data

7.4.1 Tightening Torque Values

NOTICE

Unless otherwise specified in text, the following tightening torque values apply.
The indicated torque values are valid for bolts in greased condition.
Replace self-retaining nuts on reassembly.

Bolt or screw	Thread	Max. torque
Hex or socket head	¼ in (M 6)	7 ft-lb (10 N m)
Hex or socket head	5/16 in (M8)	18 ft-lb (25 N m)
Hex or socket head	3/8 in (M 10)	32 ft-lb (45 N m)
Hex or socket head	½ in (M 12)	53 ft-lb (75 N m)
Hex or socket head	9/16 in (M 14)	85 ft-lb (120 N m)
Hex or socket head	5/8 in (M 16)	141 ft-lbs (200 N m)

7.4.2 Pipe Connections (swivel nuts)

- Tighten just firmly enough so that leakage is stopped (finger tight plus up to an additional half turn as necessary)

CORRECTIONS & COMMENTS

In an effort towards constant improvement, the Documentation section of Bauer Compressors, Inc. would like to give you the opportunity to suggest improvements or corrections to this manual. If you find any inaccuracies or have suggestions feel free to E-mail us at: *documentation@bauercomp.com*, or fill out the form below and mail it to us:

Submitters Contact Information:

Name: _____

Address: _____
(number & street)

(city, state \ zip)

E-mail: _____
(optional)

Unit Information:

Model: _____

Serial#: _____

Block#: _____

MFG Date: _____

Inaccuracies: page# _____ figure# _____ paragraph# _____

Suggested Corrections: _____

Additional Comments: _____

fold here



place
postage
here

Bauer Compressors, Inc.
Attn: Documentation
1328 Azalea Garden Rd.
Norfolk, VA 23502-1944

fold here



tape or glue here