

# SCUBAPRO

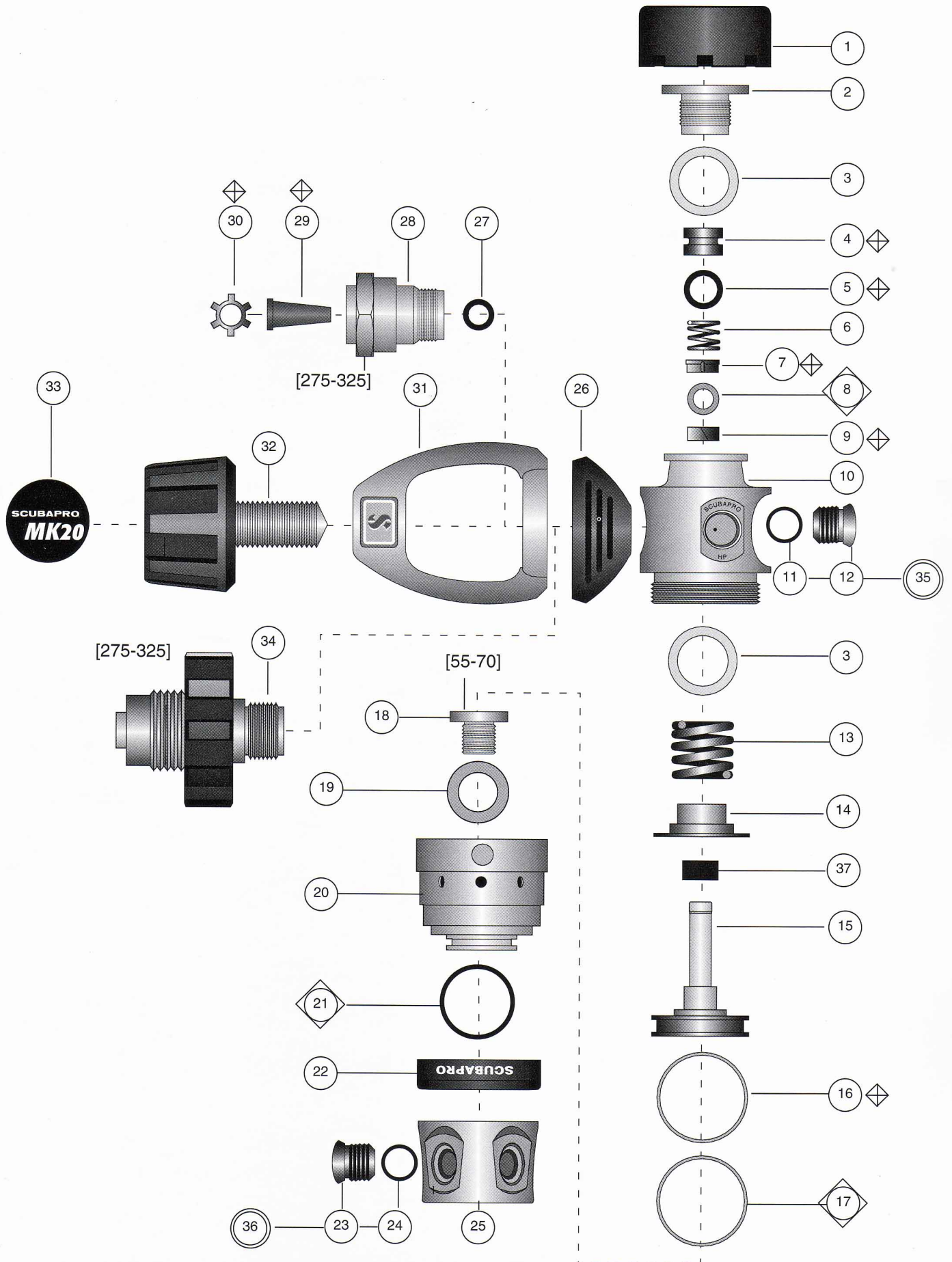
Technical Service Schematic

MK20 FIRST STAGE W/ TIS 10-752-000

Date 12/97

Revision B

Annual Repair Parts Kit - 10-750-041



# SCUBAPRO

**MK20 FIRST STAGE W/TIS 10-752-000**

Technical Service Schematic

Date 12/97 Revision B

**PARTS**

Annual Repair Parts Kit - 10-750-041

ITEM	QTY	PART NUMBER	DESCRIPTION	COST
1	1	10-700-104	REAR TRIM BUMPER	
2	1	10-700-102	SEAT RETAINER PLUG	
3	3	01-060-219	WASHER -SHIM	
4	1	10-101-161	HP SEAT	
5	1	01-050-142	SEAT O-RING -AMBER	
6	1	01-020-700	SPRING -SEAT RETAINING	
7	1	10-700-107	BUSHING -SHOULDERED	
8	1	01-050-137	PISTON STEM O-RING -AMBER	
9	1	01-060-607	BACK-UP BUSHING	
10	1	10-700-101	BODY -MK20	
11	2	01-050-138	HP PLUG O-RING -BLUE	
12	2	10-101-139	HP PLUG -7/16"-20 THREAD	
13	1	01-020-225	SPRING -COATED -TIS	
14	1	10-600-135	PISTON BUSHING -TIS	
15	1	10-600-133	MK20 PISTON	
16	1	01-051-222	BACK-UP RING	
17	1	01-050-179	PISTON HEAD O-RING -AMBER	
18	1	10-500-103	SWIVEL RETAINER	
19	1	01-060-500	SWIVEL WASHER	
20	1	10-750-022	SWIVEL CAP -MK20	
21	1	01-050-161	SWIVEL O-RING -BLUE	
22	1	10-600-114	SWIVEL TRIM BOOT	
23	4	10-101-104	LP PLUG -3/8" -24 THREAD	
24	4	01-050-132	LP PLUG O-RING -BLUE	
25	1	10-750-023	5 PORT SWIVEL -MK 20	
26	1	10-600-111	SADDLE	
27	1	01-050-138	YOKE RETAINER O-RING -BLUE	
28	1	10-600-104	YOKE RETAINER	
29	1	01-028-109	CONICAL FILTER	
30	1	01-073-101	FILTER RETAINER CLIP	
31	1	10-750-021	YOKE -TEXTURED	
32	1	10-200-008	YOKE SCREW ASSEMBLY	
33	1	01-006-624	YOKE SCREW DECAL -MK 20	
34 ○	1	10-400-030	DIN CONVERSION KIT	
35	1	10-101-039	HP PLUG -7/16"-20 WITH O-RING ASSEMBLY	
36	1	10-101-006	LP PLUG -3/8"-24 WITH O-RING ASSEMBLY	
37	1	10-700-401	SOFT THERMAL SLEEVE -MK20-TIS	
○●		10-750-121	MK20 NITROX CONVERSION KIT	

**Technical Information:**

The MK10 plus and MK20 utilize a special lubricant to improve intermediate pressure stability and performance. This new O-ring lubricant is **Christo-Lube** and is packaged under the SCUBAPRO label, p/n 41-047-000. It should be used in all MK10 and MK20 applications.

Intermediate pressure should be checked at 500 psi and 3000 psi. A slight drift is acceptable with this new seat and piston configuration. Follow the performance standards as outlined in Engineering Bulletin 242.





**Special Engineering Note:**

A maximum of three (3) shim washers, item 3, p/n 01-060-219 may be used under the seat retainer plug (item 2) to adjust the intermediate pressure to specified limits.

A maximum of three (3) shim washers, item 3, p/n 01-060-219 may be used between the spring, item 13, p/n 01-020-225 and the body, item 10, p/n 10-700-101.

Flow-through piston designs will, under some conditions, make a whistling noise during flow. To alleviate, heavily lubricate item 8, p/n 01-050-137, O-ring and / or replace item 4, p/n 0-101-161 HP seat.

**Legend:**

- NOT SHOWN
- OPTIONAL ITEM
- ▲ LIMITED WARRANTY
- OLDER CONFIGURATION
- \* SEE NOTE
-  DYNAMIC O-RING-REPLACE ANNUALLY
-  ANNUAL REPLACEMENT
-  TORQUE IN INCH-POUNDS
-  ASSEMBLY