



MK20 Yoke / DIN Dealer Service Alert July 2007

TO: SCUBAPRO® Dealers Worldwide

RE: MK20 Yoke/DIN Service Inspection Procedure Notice

In 2005, Dealers were instructed to replace un-shouldered yoke nuts in all MK 20 regulators with shouldered yoke nuts. The shouldered yoke nut eliminated the possibility of stress crack formation resulting from over-torque of the un-shouldered yoke during servicing. Dealers were also asked to visually inspect MK20 regulators prior to installing new shouldered yoke nuts for any pre-existing cracks which might have the potential to continue to grow slowly over time even after the shouldered yoke nut is in place.

This notice provides further direction and details on how to locate and identify pre-existing stress cracks on the MK20 during routine servicing which might have the potential to continue to grow slowly over time even after the shouldered yoke nut has been replaced.

1. Fully disassemble the regulator.
2. Viewed in the cross-section, look for a pre-existing crack that begins at the base and grows into the threads at the location indicated on Figure 1.
3. Viewed on the low-pressure side of the regulator body, there is little material and a pre-existing crack will be visible at the location indicated in Figure 2. Pre-existing cracks are visible at the surface in this location to the service technician, but are likely not visible to the consumer.

IMPORTANT: PLEASE INCLUDE THIS INSPECTION AS PART OF YOUR ROUTINE SERVICE OF MK20 REGULATORS, AND RETURN ANY CRACKED PART TO SCUBAPRO FOR PROMPT REPLACEMENT.

If you have any questions, please contact Tech Services at 1-800-382-2211.

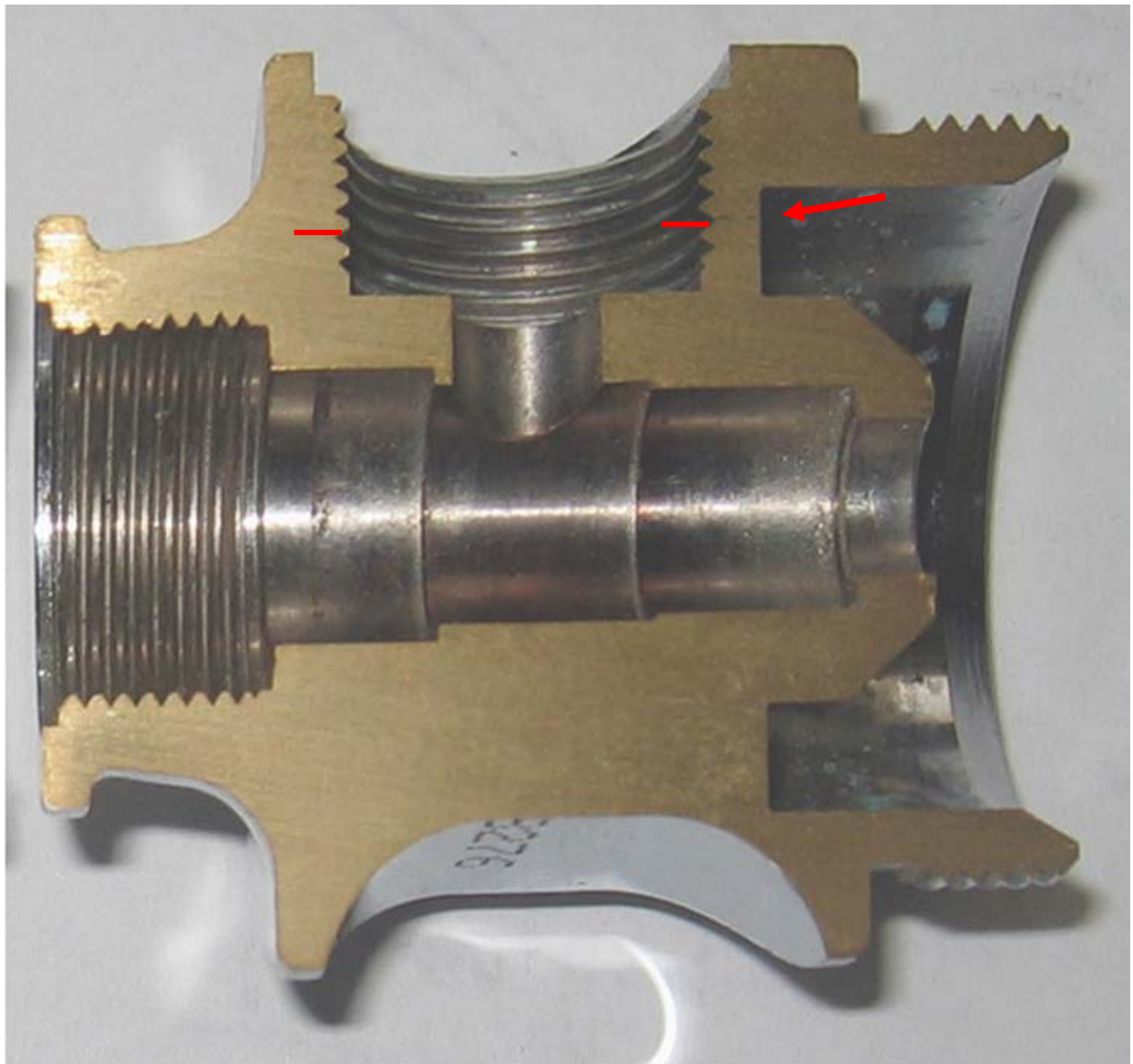


Figure 1. Cross-section of an MK20 body showing a growing crack (red lines) from the root of the threads. This crack will be visible at the location indicated (red arrow) before the crack ruptures. This location is invisible to the user during use; however it will be apparent to the service technician while the regulator is disassembled.



Figure 2. Detail of the view a service professional will have of the low-pressure side of the regulator body. If a pre-existing crack exists, it will be visible at the location of the red line in the photo. Service Technicians should add the inspection of this area (red line and arrow) during all MK20 service procedures and return any cracked components to SCUBAPRO for replacement.

If you have any questions please contact Tech Service at (800) 382-2211