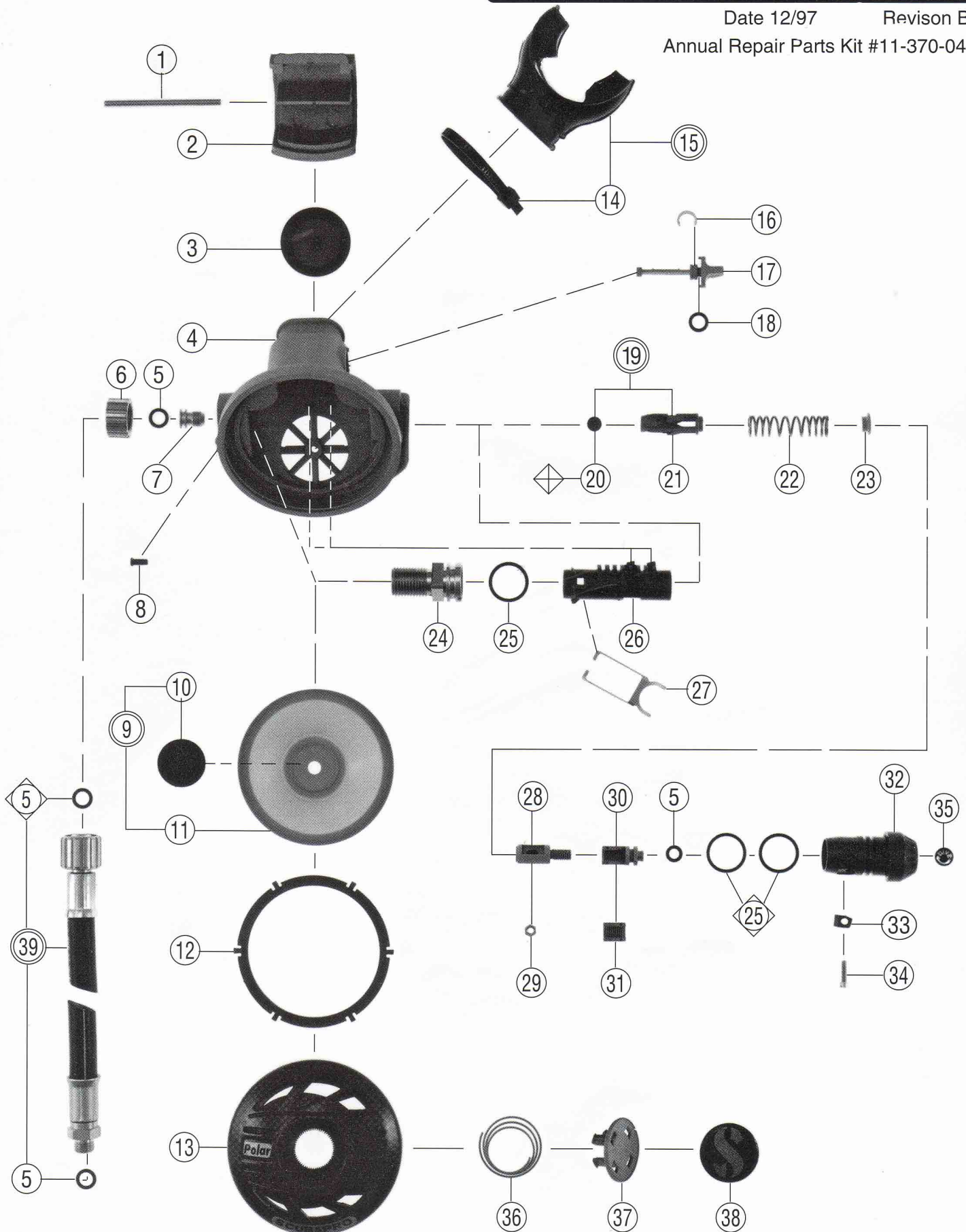


SCUBAPRO

Technical Service Schematic

POLAR SECOND STAGE #11-370-000
POLAR SECOND STAGE #11-372-000
#11-38X-000

Date 12/97 Revision B
Annual Repair Parts Kit #11-370-041



Technical Service Schematic

Parts

| # | QTY | PART # | DESCRIPTION | COST |
|----|-----|------------|----------------------------------|------|
| 1 | 1 | 11-190-106 | PIN | |
| 2 | 1 | 11-300-024 | COVER, EXHAUST | |
| 3 | 1 | 11-250-103 | VALVE, EXHAUST | |
| 4 | 1 | 11-300-021 | CASE, MOLDED | |
| 5 | 3 | 01-050-132 | O-RING | |
| 6 | 1 | 11-250-106 | NUT, JAM | |
| 7 | 1 | 11-195-110 | ORIFICE, PLASTIC | |
| 8 | 1 | 01-075-131 | PIN, COVER RETAINING | |
| 9 | 1 | 11-300-009 | DIAPHRAGM ASSY | |
| 10 | 1 | 11-109-123 | DISC, DIAPHRAGM | |
| 11 | 1 | 11-300-031 | DIAPHRAGM | |
| 12 | 1 | 11-190-117 | SPACER RING | |
| 13 | 1 | 11-370-026 | COVER, FRONT, PRINTED | |
| 14 | 1 | 01-088-101 | MOUTHPIECE STRAP, BLACK | |
| | 1 | 01-088-107 | MOUTHPIECE STRAP, CRYSTAL | |
| 15 | 1 | 01-040-010 | MOUTHPIECE, BLACK | |
| | 1 | 01-040-006 | MOUTHPIECE, CRYSTAL | |
| 16 | 1 | 01-073-250 | RETAINING RING, FLOW VANE | |
| 17 | 1 | 11-300-023 | FLOW VANE | |
| 18 | 1 | 01-050-126 | O-RING, FLOW VANE, RED | |
| 19 | 1 | 11-200-014 | DURO POPPET ASSY | |
| 20 | 1 | 11-108-101 | SEAT | |
| 21 | 1 | 11-250-105 | POPPET, DURO | |
| 22 | 1 | 01-020-109 | SPRING | |
| 23 | 1 | 11-109-104 | PAD, SPRING | |
| 24 | 1 | 11-360-022 | HOUSING, BRASS | |
| 25 | 3 | 01-050-160 | O-RING | |
| 26 | 1 | 11-360-021 | AIR BARREL, PLASTIC | |
| 27 | 1 | 11-109-105 | LEVER | |
| 28 | 1 | 11-370-022 | PAD, ADJUSTMENT, MALE | |
| 29 | 1 | 01-121-218 | NUT | |
| 30 | 1 | 11-370-023 | ADJUSTMENT NUT, FEMALE | |
| 31 | 1 | 11-370-025 | HALF ADJUSTMENT NUT, FEMALE | |
| 32 | 1 | 11-370-024 | KNOB, ADJUSTMENT | |
| 33 | 1 | 11-195-104 | CAM LOBE | |
| 34 | 1 | 01-101-102 | SCREW | |
| 35 | 1 | 01-006-762 | DECAL, ADJUSTMENT KNOB | |
| 36 | 1 | 01-020-110 | SPRING, PURGE | |
| 37 | 1 | 11-300-025 | PURGE BUTTON | |
| 38 | 1 | 01-006-760 | DECAL, PURGE, BLUE | |
| | 1 | 01-006-761 | DECAL, PURGE, RED | |
| | 1 | 01-006-764 | DECAL, PURGE, YELLOW | |
| 39 | 1 | 01-314-032 | HOSE ASSEMBLY, 32, POLAR OR R190 | |
| | | | | |
| | | | | |
| | | | | |
| | | | | |
| | | | | |

POLAR SECOND STAGE #11-370-000
POLAR SECOND STAGE #11-372-000
POLAR OCTOPUS #11-38X-000

Date 12/97 Revision B
Annual Repair Parts Kit #11-370-041

Technical Information:

The Annual Repair Parts Kit may contain o-rings used in the hose assembly. Refer to the separate hose schematic for identification.

Lubricate all threads with silicone grease to reduce long term corrosion and provide easier disassembly at the next service interval.

Reference Item #11, Part #11-300-031: The molded part number imprinted on the this rubber diaphragm is 11-250-1XX or it will be imprinted with the letters US1.

Special Engineering Notes:

Prior to installing the poppet, the orifice item #7 should be backed away from the poppet to avoid damage to the poppet seat.



The flow vane retaining ring Item #16 has been changed from stainless to copper alloy. The stainless clips should be inspected annually for rust and replaced with the copper clip if rusted.

The two posts on the air barrel align and fit into the cavities inside the plastic regulator case. Be sure to lift up on the air barrel before trying to remove it from the case.

The adjustment pad has a slotted cavity to retain the nut for the Dive/Pre-Dive cam. Place the nut into the cavity before placing into the Dive/Pre-Dive adjustment knob. Align the nut in the adjusting pad to the hole in the adjustment knob and place it into the case. The cam lobe is then placed into the recess in the adjustment knob and retained by the screw, which tightens to the nut in the adjustment pad.

When adjusting spring tension with item 30, turning the slotted screw clockwise (when it is facing you) will **REDUCE** spring tension. Turn it counterclockwise to **INCREASE** tension.

Legend (prices subject to change without notice)

- Not Shown  Dynamic O'Ring Replace Annually
 ○ Optional Item  Annual Replacement
 ▲ Limited Warranty [] Torque In Inch Pounds
 □ Older Configuration * See Note