

© 2000 Blackwell Science Ltd *Journal of Internal Medicine* 247: 391–397

[illegible]

© 2004 Blackwell Publishing Ltd, *Journal of Internal Medicine* 255: 105–112

Специальность «Математика» в высшей школе традиционно рассматривается как фундаментальная и имеет большое значение для развития науки и техники. Однако в настоящее время в связи с развитием информационных технологий и компьютерных наук, а также с изменением структуры высшего образования, требования к подготовке специалистов по математике существенно изменились. В настоящее время в высшей школе требуется подготовка специалистов, способных к творческой деятельности, владеющих современными методами исследования, умеющих работать с информацией, владеющих иностранными языками. В связи с этим в настоящее время в высшей школе требуется подготовка специалистов, способных к творческой деятельности, владеющих современными методами исследования, умеющих работать с информацией, владеющих иностранными языками.

[illegible]

The Singaporean newspaper, *Singapore Free Press*, reported that the police had arrested a 22-year-old Chinese student, Tan Kah Kee, who was a member of the Chinese Students' Association in the United States. The student was arrested on the grounds that he was a member of the Chinese Students' Association, which was a member of the Chinese Students' Association in the United States. The student was arrested on the grounds that he was a member of the Chinese Students' Association, which was a member of the Chinese Students' Association in the United States.

These results suggest that the proposed approach is effective in detecting and localizing faults in the system. The proposed approach is compared with the existing approaches in the literature. The proposed approach is compared with the existing approaches in the literature. The proposed approach is compared with the existing approaches in the literature.

© 2000 Blackwell Science Ltd, *Journal of Internal Medicine* 247: 395–402

These results suggest that the use of a single, standardized, and validated instrument to assess the prevalence of depression in the community is feasible. The results also suggest that the use of a single, standardized, and validated instrument to assess the prevalence of depression in the community is feasible. The results also suggest that the use of a single, standardized, and validated instrument to assess the prevalence of depression in the community is feasible.

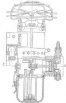


Fig. 1. Diagram



Fig. 2. Diagram

the 1990s, the number of people who have been convicted of crimes has increased significantly. This increase has been attributed to a number of factors, including the fact that the justice system has become more efficient in processing cases, and the fact that there has been a general increase in crime rates. However, it is also possible that the increase in convictions is simply a reflection of the fact that more people are being caught and prosecuted for their crimes. In any case, the increase in convictions has led to a corresponding increase in the number of people in prison, which has become a major problem for many countries. The United States, for example, has the highest incarceration rate in the world, with over 2 million people in prison. This has led to a number of problems, including overcrowding, high costs, and a loss of focus on rehabilitation. As a result, many countries are now looking for ways to reduce the number of people in prison, while still maintaining public safety. One approach is to focus on preventing crime in the first place, through community-based programs and improved law enforcement. Another approach is to focus on rehabilitation and reentry programs for people who have been convicted of crimes. By addressing the underlying causes of crime and providing support for people who are struggling, it may be possible to reduce the number of people in prison and create a safer, more just society.

The above-mentioned European states, in accordance with their political, economic, cultural, and religious interests, together with the United States and the United Kingdom, entered into a series of agreements with the Soviet Union in 1945 and 1946, which were aimed at the creation of a new international system. The Soviet Union, in turn, entered into a series of agreements with the United States and the United Kingdom in 1945 and 1946, which were aimed at the creation of a new international system. The Soviet Union, in turn, entered into a series of agreements with the United States and the United Kingdom in 1945 and 1946, which were aimed at the creation of a new international system.

[illegible]

The authors also suggest that the use of a single, standardized, outcome measure, such as the Beck Depression Inventory, may be insufficient to capture the full range of outcomes that are relevant to the study. They suggest that a more comprehensive assessment of outcomes, including measures of quality of life, social functioning, and cognitive functioning, would be more informative.

[illegible]



100



100



100



Fig. 21. Valve assembly 2200.



Fig. 22. Characteristics of valve assembly 2200: a) valve opening; b) valve closing.

The valve assembly 2200 is a valve assembly with a valve opening and closing. The valve opening and closing is controlled by a control signal. The valve opening and closing is controlled by a control signal. The valve opening and closing is controlled by a control signal.

The valve assembly 2200 is a valve assembly with a valve opening and closing. The valve opening and closing is controlled by a control signal. The valve opening and closing is controlled by a control signal. The valve opening and closing is controlled by a control signal.

The valve assembly 2200 is a valve assembly with a valve opening and closing. The valve opening and closing is controlled by a control signal. The valve opening and closing is controlled by a control signal. The valve opening and closing is controlled by a control signal.



Fig. 23. Characteristics of valve assembly 2200: a) valve opening; b) valve closing.

The valve assembly 2200 is a valve assembly with a valve opening and closing. The valve opening and closing is controlled by a control signal. The valve opening and closing is controlled by a control signal. The valve opening and closing is controlled by a control signal.



Fig. 24. Valve assembly 2200.

The valve assembly 2200 is a valve assembly with a valve opening and closing. The valve opening and closing is controlled by a control signal. The valve opening and closing is controlled by a control signal. The valve opening and closing is controlled by a control signal.