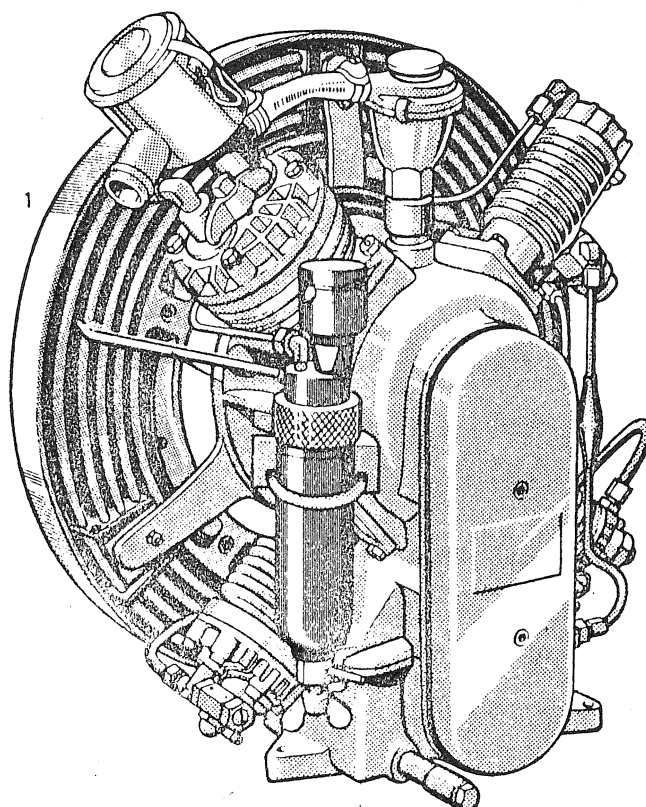


# SPARE PARTS LIST FOR COMPRESSOR TYPE K 14 & K 14/85

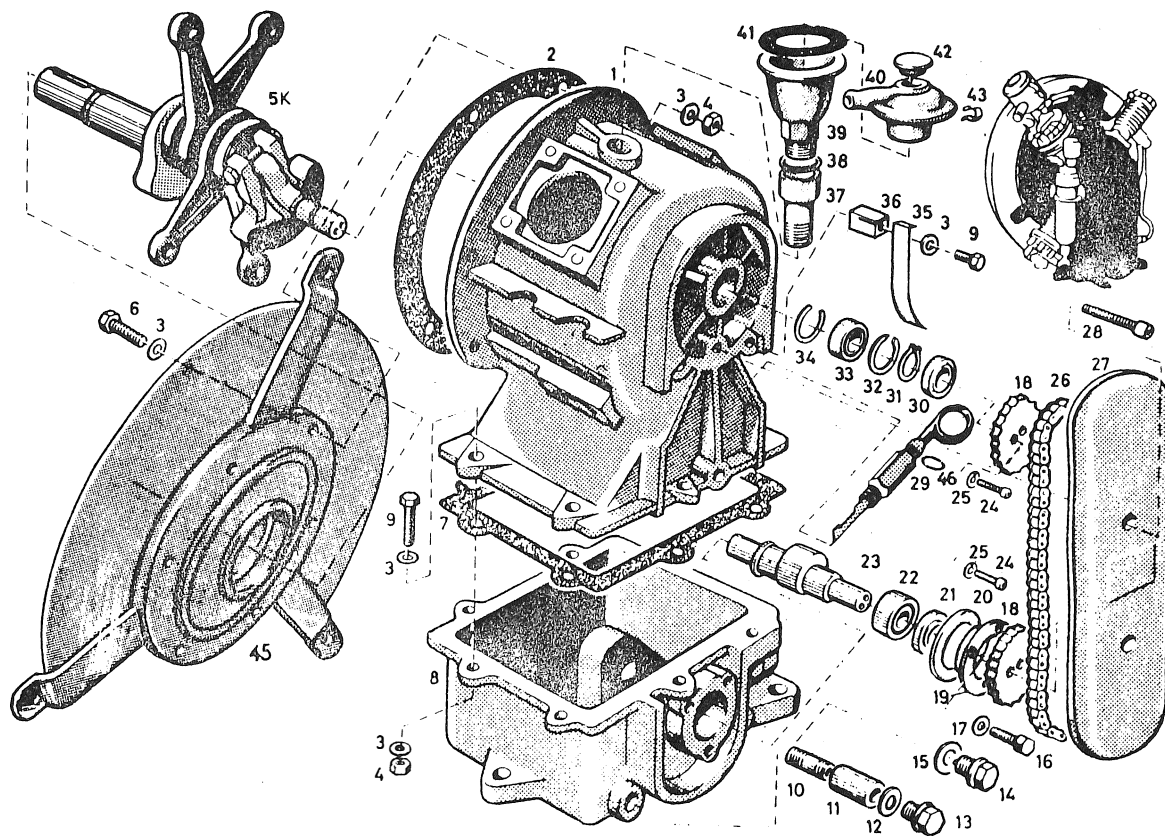
Production Year 1965 to 1975  
to Serial number : 4/xxxx/x

H 01



## TECHNICAL DATA

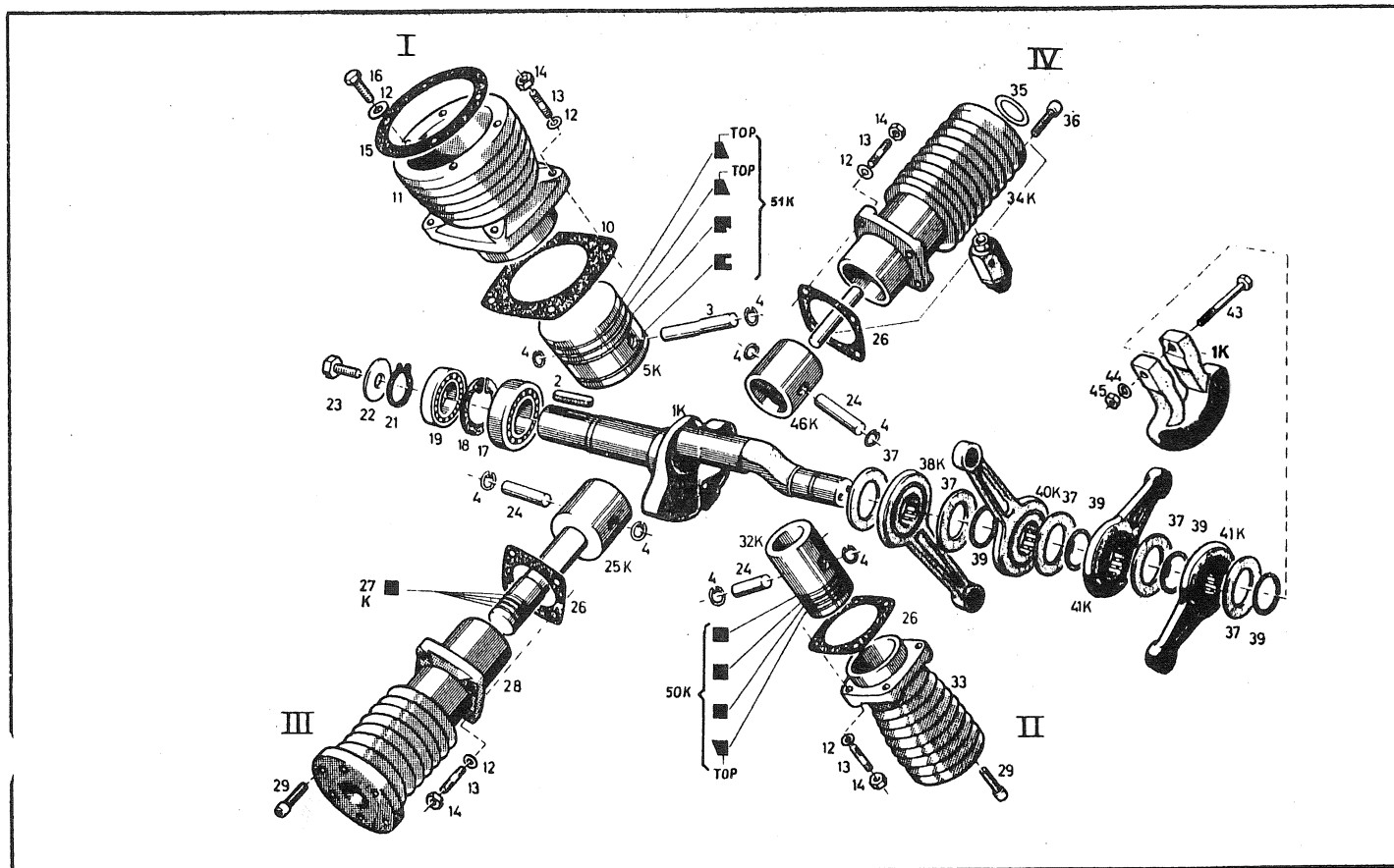
for Compressor Type		K 14	K 14/85
Number of Cylinders		4	4
Method of operation		4-Stage	4-Stage
Cylinder Bore in Millimeters	1.Stage	88	88
	2.Stage	45	45
	3.Stage	22	22
	4.Stage	12	12
Stroke in Millimeters		40	50
Output & Power consumption:			
Power required		3.0	5.0
Speed		800 RPM	850 RPM
Intermediate Pressures	1.Stage	49 PSI	49 PSI
	2.Stage	238 PSI	238 PSI
	3.Stage	825 PSI	825 PSI
	4 . Stage	3200 PSI	3200 PSI



ITEM	ORDER NO:	DESCRIPTION	ITEM	ORDER NO:	DESCRIPTION
- 1	4700	Crankcase	-23	4704	Camshaft
- 2	4775	Gasket	-24	N 158	Allen Head Cap Screw
- 3	N 58	Washer 8 MM	-25	N 100	Lockwasher 6 MM
- 4	N 57	Hex Nut 8 MM	-26	N 3020	Roller Chain
- 5K	11946	Crankshaft cpl. K 14	-27	5599	Chain Cover
- 5K	11947	Crankshaft K 14/85	-28	N 123	Allen Head Cap Screw
- 6	N 467	Hex Head Cap Screw	-29	N 816	Oil Dip Stick
- 7	4776	Gasket	-30	N 582	Oil Seal 20x37x10
- 8	4701	Crankcase Bottom	-31	N 1029	Retaining Ring
- 9	N 1022	Hex Head Cap Screw	-32	N 818	Retaining Ring
-10	N 1025	Pipe Nipple	-33	N 583	Bearing
-11	N 1026	Pipe Connector	-34	N 1030	Retaining Ring
-12	N 874	Gasket	-35	6405	Tension Spring
-13	N 1027	Pipe Plug	-36	6404	Spring Retainer
-14	N 314	Magnetic Plug	-37	N 1031	Oil Breather Extension
-15	N 1028	Gasket	-38	4416	Gasket
-16	N 53	Hex Head Cap Screw	-39	6181	Oil Breather Body
-17	N 102	Washer 6 MM	-40	6182	Oil Breather Top
-18	2006	Chain Sprocket	-41	6192	Gasket
-19	5348	Bearing Flange	-42	N 852	Oil Breather Cap
20	149	Gasket	-43	6200	Clip
-21	N 86	Oil Seal	-45	4702	Crankcase Flange
-22	N 91	Bearing 6204	-46	N 1338	O-Ring

# PISTON & CYLINDERS

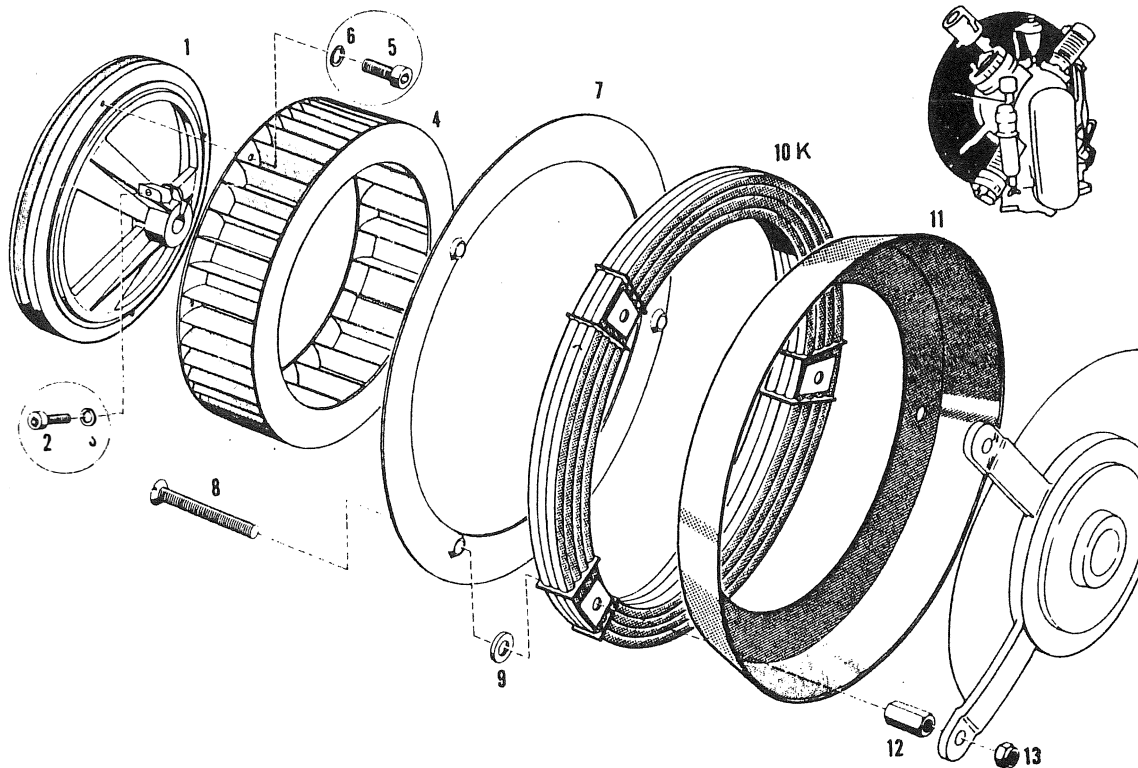
H 03a



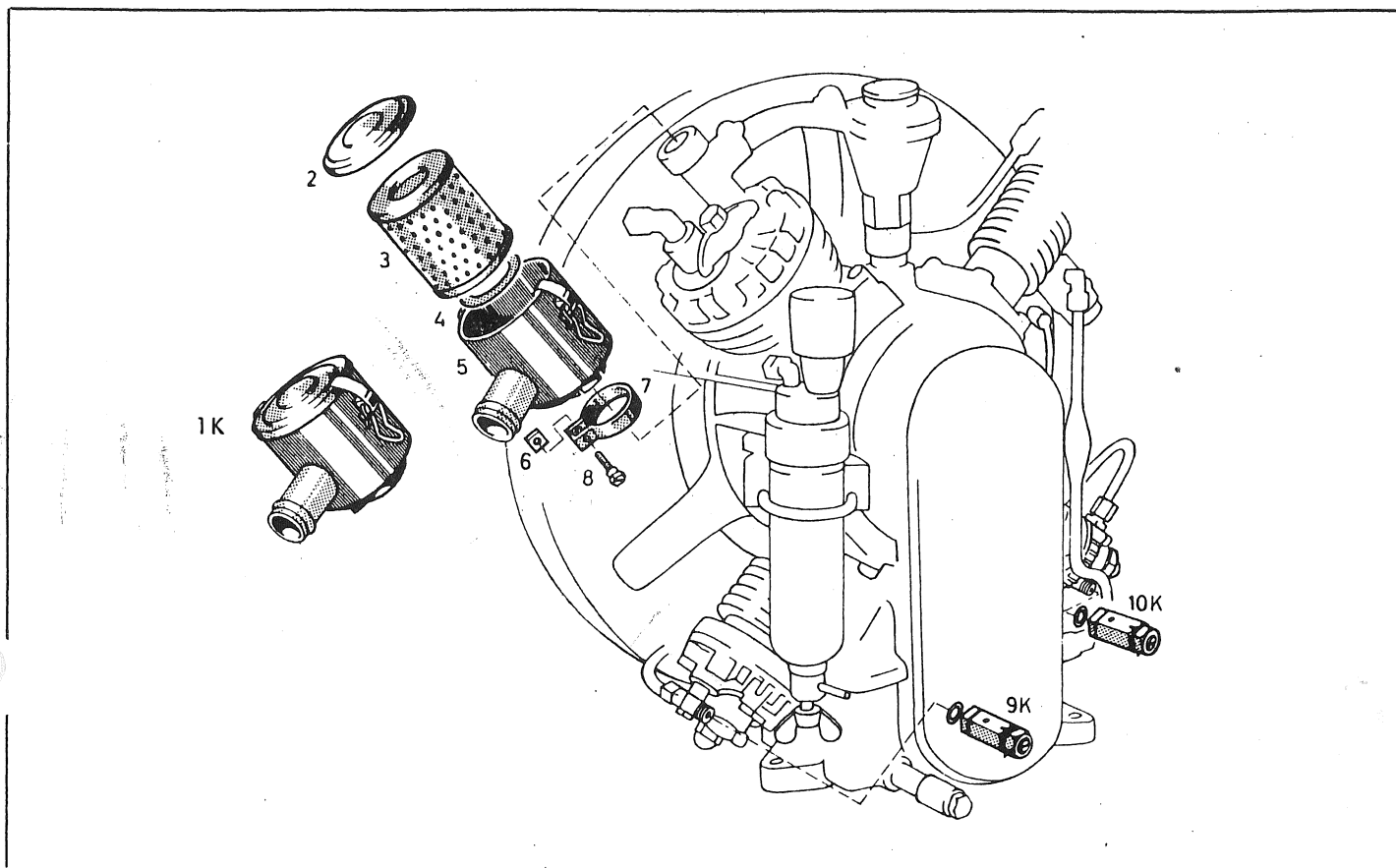
ITEM	ORDER NO:	DESCRIPTION	ITEM	ORDER NO:	DESCRIPTION
- 1K	5349	Crankshaft K 14	-25K	N 815	Piston K 14
- 1K	3785	Crankshaft K 14/85	-25K	N 1038	Piston K 14/85
- 2	N 817	Key	-26	1866	Gasket
- 3	N 1032	Piston Pin	-27K	N 1084	Piston Ring Set
- 4	N 1033	Retaining Ring	-28	4214	Cylinder 3.Stage
- 5K	N 813	Piston K 14	-29	N 503	Allen Head cap screw
- 5K	N 111	Piston K 14/85	-32K	N 825	Piston 2.St. K 14
-10	1867	Gasket	-32K	N 95	Piston 2.St. K 14/85
-11	14129	Cylinder 1.Stage	-33	5611	Cylinder 2.Stage
-12	N 58	Washer 8 MM	-34K	4213-40	Cylinder 4.St. K 14
-13	N 215	Stud M 8 x 25	-34K	4213-50	Cylinder 4.St. K 14/85
-14	N 57	Hex Nut M 8	-36	see Valve Head Final Stage	
-15	3039	Head Gasket	-37	4180	Spacer Disc
-16	N 17	Hex Head Cap Screw	-38K	5686	Connecting rod 2.Stage
-17	N 168	Ball Bearing 6206	-39	1529	Spacer
-18	N 1311	Retaining Ring	-40K	1502	Connecting Rod 1.Stage
-19	N 586	Ball Bearing 6006-2RS	-41K	1509	Connecting Rod 3.&4.St.
-21	N 1036	Retaining Ring	-43	N 1235	Allen Head Cap Screw
-22	1492	Washer	-44	N 108	Lockwasher 8 mm
-23	N 198	Hex Head Cap Screw	-45	N 370	Hex Lock Nut 8 MM
-24	N 1037	Piston Pin	-46K	N 823	Guide Piston K 14
			-46K	N 824	Guide Piston K 14/85
			-50K	N 1082	Piston Ring set
			-51K	N 1080	Piston Ring set

# 04a

## COOLING ASSEMBLY



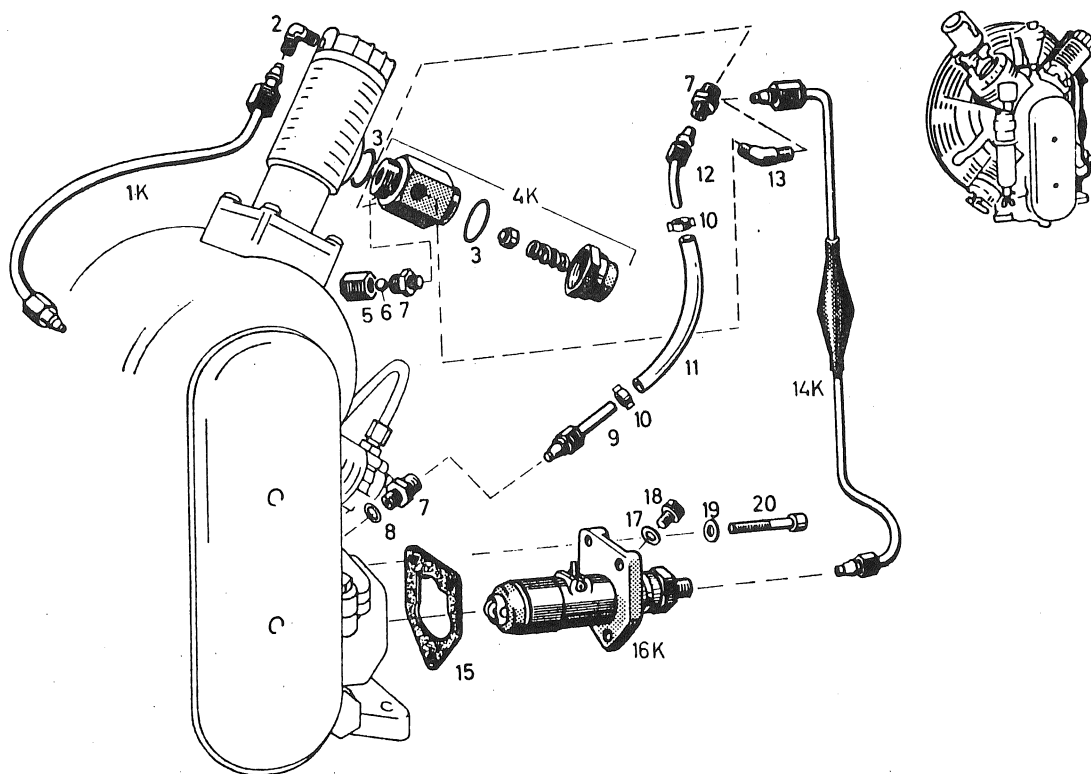
ITEM	ORDER NO:	DESCRIPTION
- 1	4648	Flywheel with V-Belt Groove
- 2	N 277	Allen Head Cap Screw M 10 x 60
- 3	N 176	Lockwasher 10 MM
- 4	7134	Radial Blower
- 5	N 1312	Allen Head Cap Srew M 6 x 12
- 6	N 1313	Lockwasher 6 mm
- 7	7093	Cover Disc
- 8	N 1317	Flat Head screw M 6 x 100 shortened to 95 mm
- 9	7325	Spacer
-10	8020	Inter & After Cooler
-11	7095	Blower Rim
-12	7291	Hex Nut long
-13	N 1042	Nylon Lock Nut



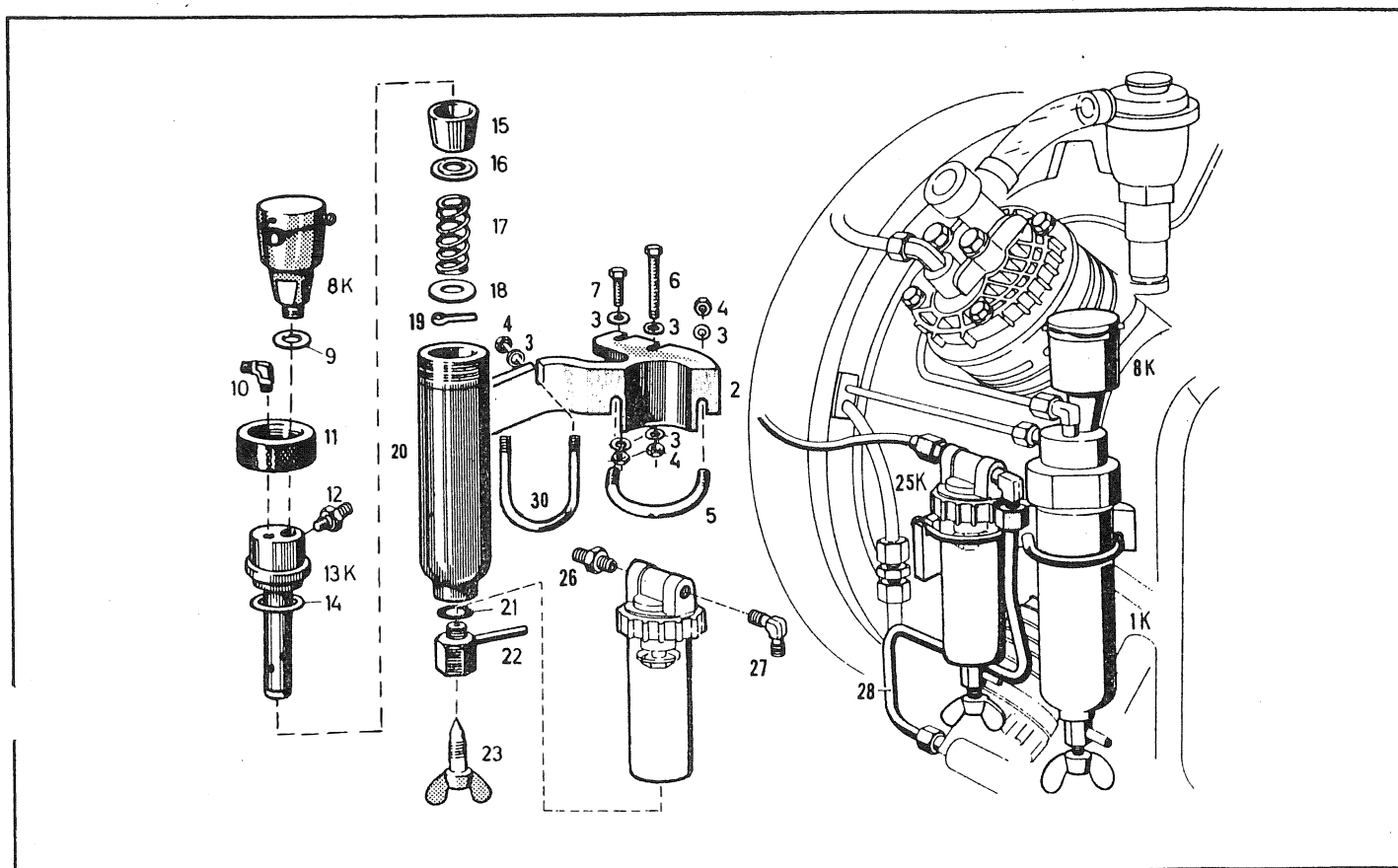
ITEM	ORDER NO:	DESCRIPTION
- 1K	13758	Intake Filter complete
- 2	N 1043	Cover (not sold separate)
- 3	N 70	Intake Filter Element
- 4	N 1067	Gasket
- 5	N 71	Filter Housing (not sold separate)
- 6	N 1044	Nut square 6 mm
- 7	N 1045	Clamp
- 8	N 1046	Slotted Hex Bolt
- 9K	10253	Relief Valve 2.-3. Stage 24 bar
- 10K	10255	Relief Valve 1.-2. Stage 5.8 bar
	8263	Gasket for Relief Valve 1.-2. Stage 5.8 bar
	8264	Gasket for Relief Valve 2.-3. Stage 24 bar

# H 06

## FORCE FEED LUBRICATION



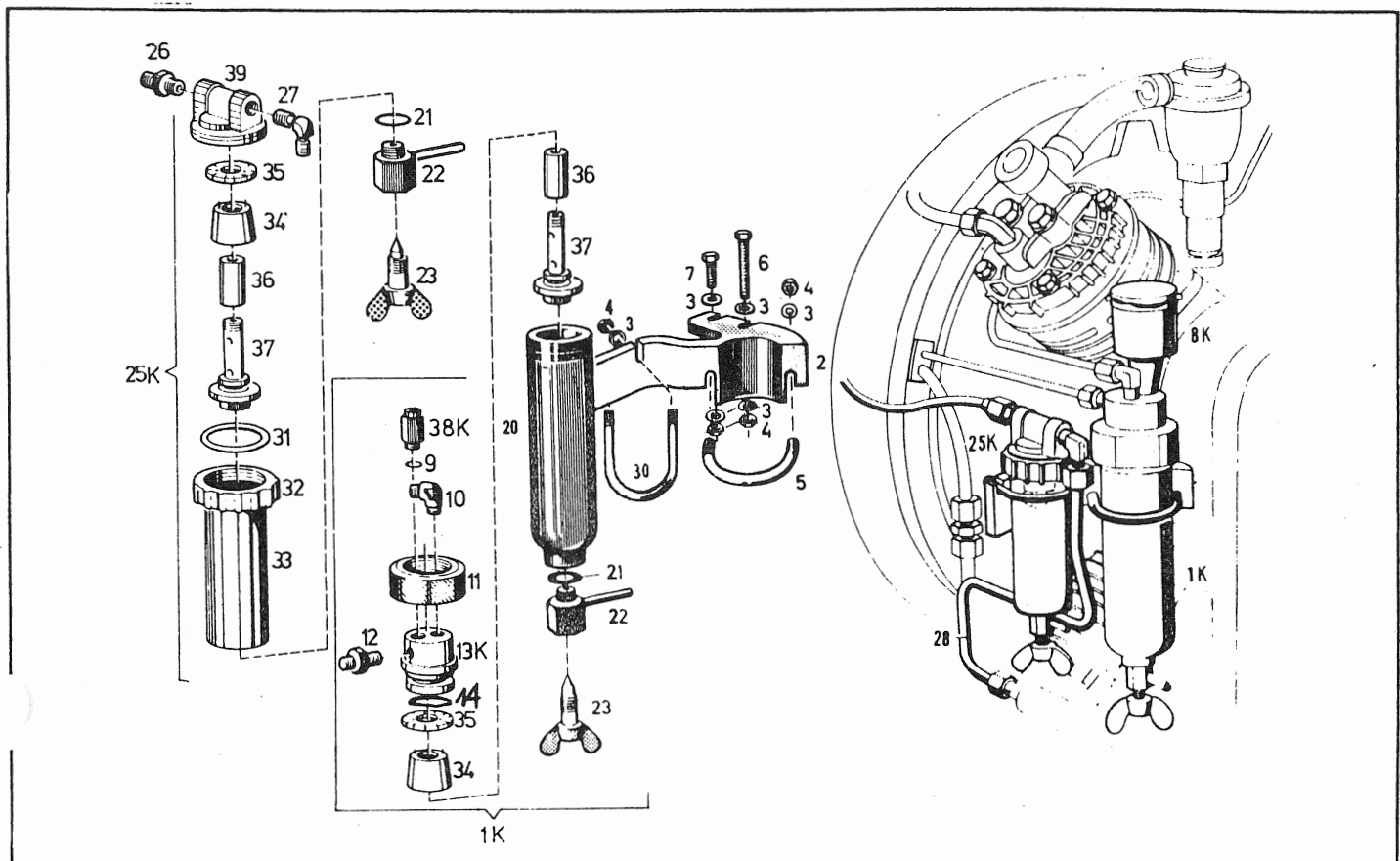
ITEM	ORDER NO:	DESCRIPTION
- 1K	N 1047	Inlet Tube Final Stage 6 MM 24" long
- 2	N 1048	Angle Fitting WE 6 SR
- 3	N 4	Copper Gasket
- 4K	2616	Oil Pressure Regulator complete
- 5	N 1049	Tube Nut M 6 L
- 6	N 1050	Steel Ball 10 mm Ø
- 7	N 1051	Fitting straight GE 6 LR R 1/8"
- 8	N 1052	Copper Gasket
- 9	N 1053	Fitting with Tube
- 10	N 1054	Tube Clamp
- 11	N 1055	Clear Plastic Tube
- 12	N 1056	Fitting with Tube
- 13	N 1057	Angle Fitting WE 6 LR
- 14K	N 1058	Oil Line with Filter
- 15	2010	Oil Pump Gasket
- 16K	N 83	Oil Pump complete
- 17	N 1059	Copper Gasket
- 18	N 1060	Plug
- 19	N 58	Washer
- 20	N 61	Allen Head cap Screw
- 21	N 1896	Fitting for Oil Pump



ITEM	ORDER NO:	DESCRIPTION
- 1K	2681	Inter Seperator 3.Stage less Relief Valve
- 2	5441	Mounting Bracket
- 3	N 58	Washer 8 mm
- 4	N 57	Hex Nut M 8
- 5	7799	U-Bolt
- 6	N 622	Hex Head Cap Screw M 8 x 55 mm
- 7	N 467	Hex Head Cap Screw M 8 x 30 mm
- 8K	12886	Safety Valve 3.Stage
- 9	4479	Gasket
- 10	N 1048	Angle Fitting WE 6 SR
- 11	2597	Ring Nut
- 12	N 1061	Fitting straight GE 6 SR
- 13K	2669	Seperator Top Assembly complete
- 14	N 62	O-Ring
- 15	2706	Sintered Metal Insert
- 16	3630	Washer
- 17	2104	Spring
- 18	N 68	Washer
- 19	N 72	Cotter Pin
- 20	2599	Seperator Case
- 21	N 1316	Copper Gasket
- 22 & 23	11430	Drain-Valve complete
- 25K	9150	Seperator complete 2.Stage
- 28	N 1541	connecting tube

107d

INTER SEPERATOR FROM 1974

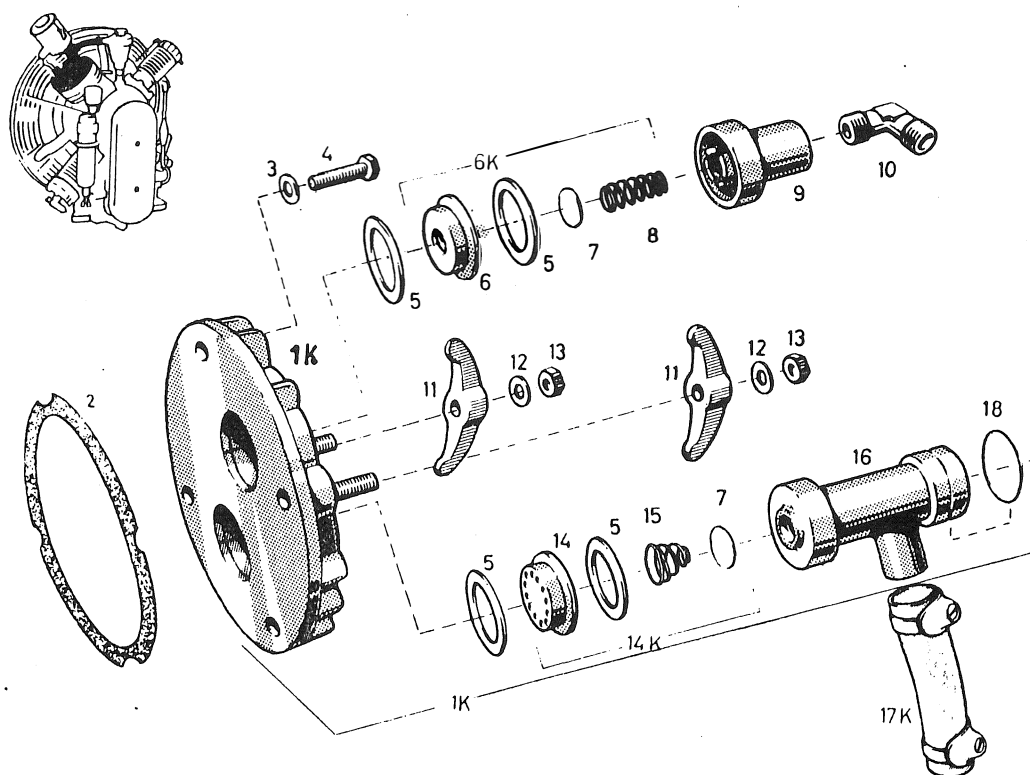


ITEM	ORDER NO:	DESCRIPTION	ITEM	ORDER NO:	DESCRIPTION
- 1K	2681	Inter-Seperator 3.St.	-30	N 2718	U-Bolt
- 2	5441	Mounting Bracket	-31	N 2720	O-Ring
- 3	N 58	Washer 8 mm	-32	N 2721	Ring Nut
- 4	N 57	Hex Nut 8 mm	-33	9152	Seperator Case
- 5	7799	U-Bolt	-34	12785	Baffle Cone
- 6	N 622	Hex Head Cap screw	-35	12784	Distributor Plate
- 7	N 467	Hex Head Cap screw	-36	N 2726	Sintered Metal Insert
- 8K	12886	Safety Valve 3,Stage	-37	12786	Plastic Screw
- 9	4479	Gasket	-38K	12886	Safety Valve 3.Stage
-10	N 1048	Angle Fitting WE 6 SR	-39		Seperator Head (not sold sepearte)
-11	2597	Ring Nut			
-12	N 1061	Fitting GE 6 SR			
-13K	13634	Seperator Head complete			
-14	N 62	O-Ring			
-20	2599	Seperator Case			
-21	N 1316	Copper gasket			
-22	2371	Drain Valve Body			
-23	55888	Wing Screw			
-25K	9150	Seperator 2.Stage			
-26	N 1063	Fitting GE 8 LR			
-27	N 1536	Angle Fitting WE 8 LR			
-28	N 1541	Connecting Tube			



## VALVE HEAD 1. STAGE

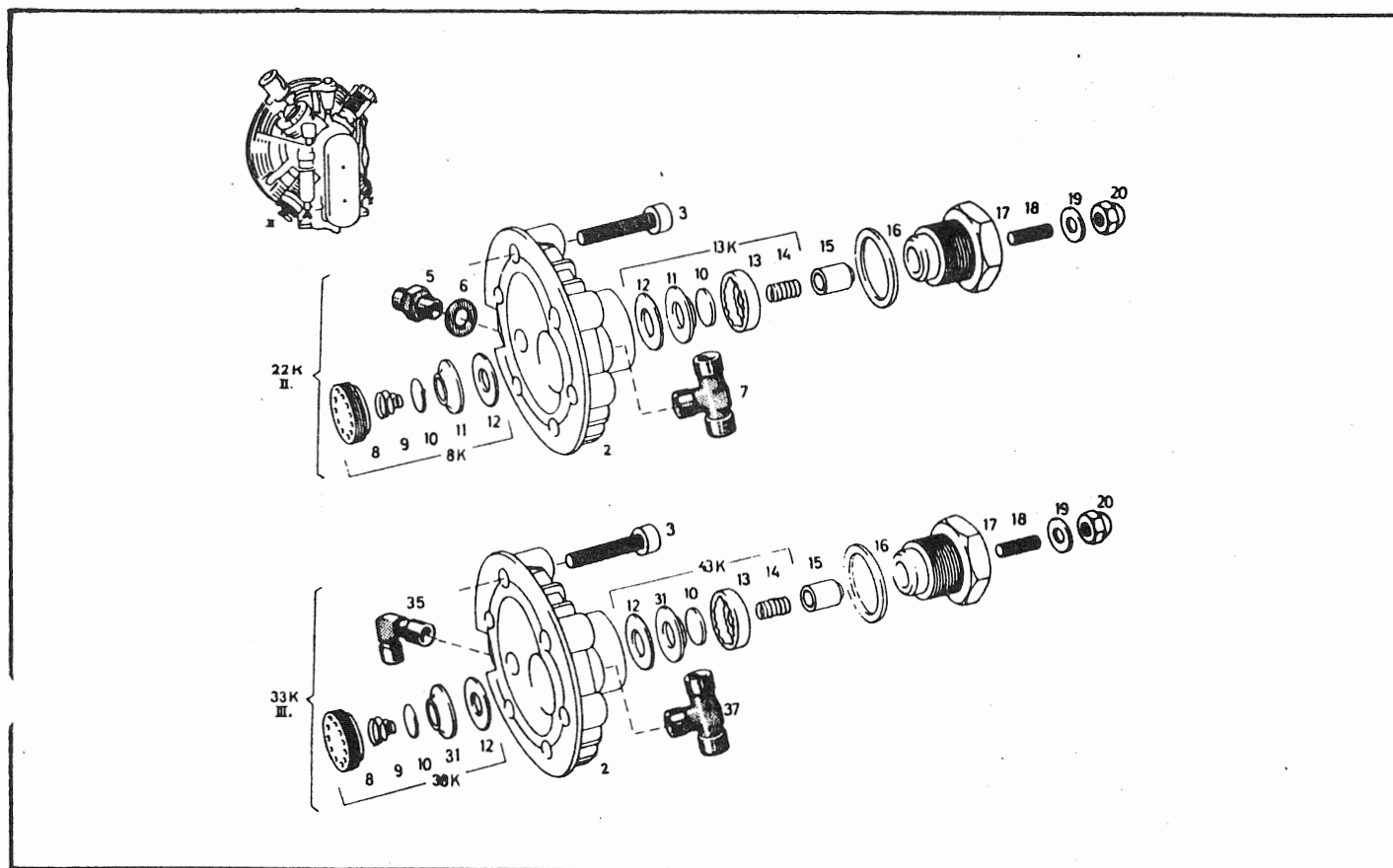
H 08a



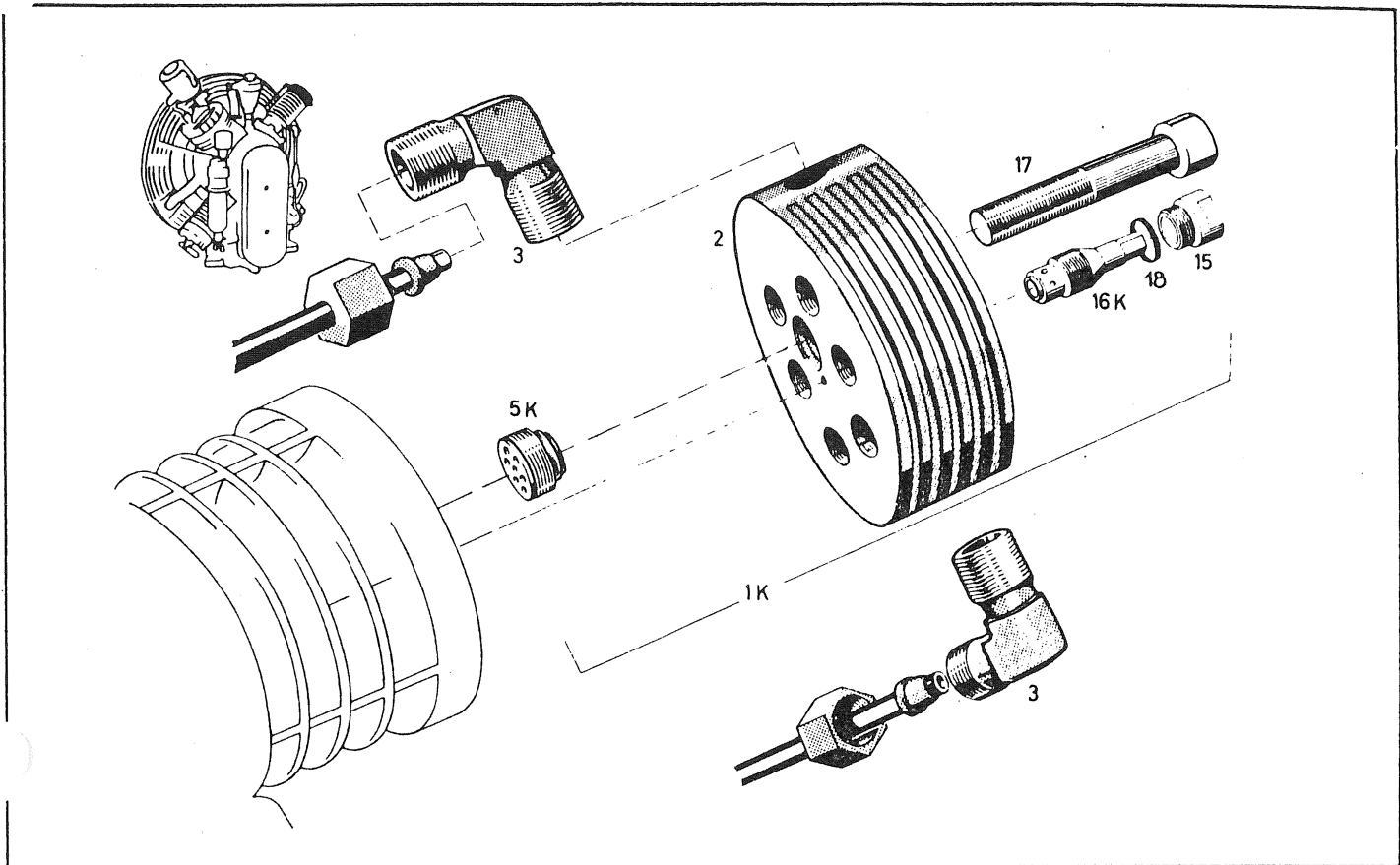
ITEM	ORDER NO:	DESCRIPTION
- 1K	6520	Valve Head 1.Stage complete with Valves & Fittings
- 2	3039	Valve Head Gasket
- 3	N 58	Washer 8 mm
- 4	N 17	Hex Head Cap Screw M 8 x 45 mm
- 5	4675	Valve Gasket
- 6	1067	Delivery Valve Insert
- 6K	13823	Delivery Valve Kit complete
- 7	1267	Valve Plate
- 8	3015	Delivery Valve Spring
- 9	2137	Delivery Valve Retainer
- 10	N 1065	Angle Fitting WE 10 LR
- 11	702	Clamp
- 12	N 16	Washer 10 mm
- 13	N 177	Hex Nut 10 mm
- 14	1068	Intake Valve Retainer
- 15	3016	Intake Valve Spring
- 16	4972	Intake Elbow
- 17K	N 1066	Plastic Hose
- 18	N 1539	O-Ring

# A 09b

## VALVE HEAD 2. & 3. STAGE

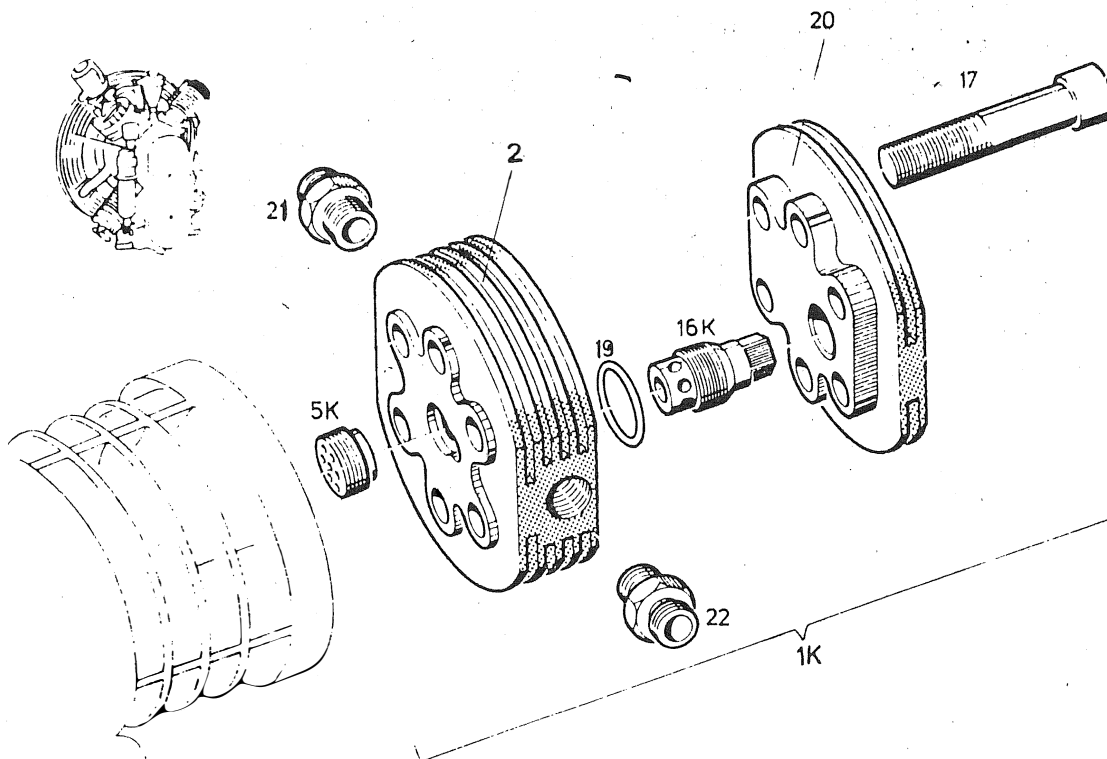


ITEM	ORDER NO:	DESCRIPTION	ITEM	ORDER NO:	DESCRIPTION
- 2	1512	Valve Head bare	-22K	1512K-2	Valve Head complete 2.Stage
- 3	N 503	Allen Head Cap Screw	-31	1100	Valve Seat 3.Stage
- 5	N 1063	Fitting GE 8 LR	-33K	1512K-3	Valve Head complete 3.Stage
- 6	N 1316	Gasket	-35	N 1048	Fitting WE 6 SR
- 7	N 1064	Fitting TE 10 LR	-37	N 1062	Fitting TE 8 LR
- 8	319	Intake Valve Retainer	<u>VALVE KITS</u>		
- 9	279	Intake Valve Spring	- 8K	12841	Intake Valve 2.Stage
-10	232	Valve Plate	-13K	12840	Outlet Valve 2.Stage
-11	233	Valve Seat	-38K	12836	Intake Valve 3.Stage
-12	240	Valve Gasket	-43K	12835	Outlet Valve 3.Stage
-13	228	Outlet Valve Retainer			
-14	1026	Outlet Valve Spring			
-15	234	Spring Retainer			
-16	N 4	Copper Gasket			
-17	235	Valve Head Plug			
-18	N 3	Allen Set Screw			
-19	N 2	Copper Gasket			
-20	N 1	Cap Nut			



ITEM	ORDER NO:	DESCRIPTION
- 1K	6150	Valve Head Final Stage (discontinued use Page H 10c)
- 3	N 1048	Fitting WE 6 SR
- 5K	7790	Intake Valve complete
-16K	7780	Outlet Valve complete
-17	N 123	Allen Head Cap Screw (use if head is counterbored)
-17	N 1234	Allen Head Cap Screw (use if head is not counterbored)
-18	N 2730	O-Ring (only for heads where top is chamfered)
-15	7779	Cap Plug

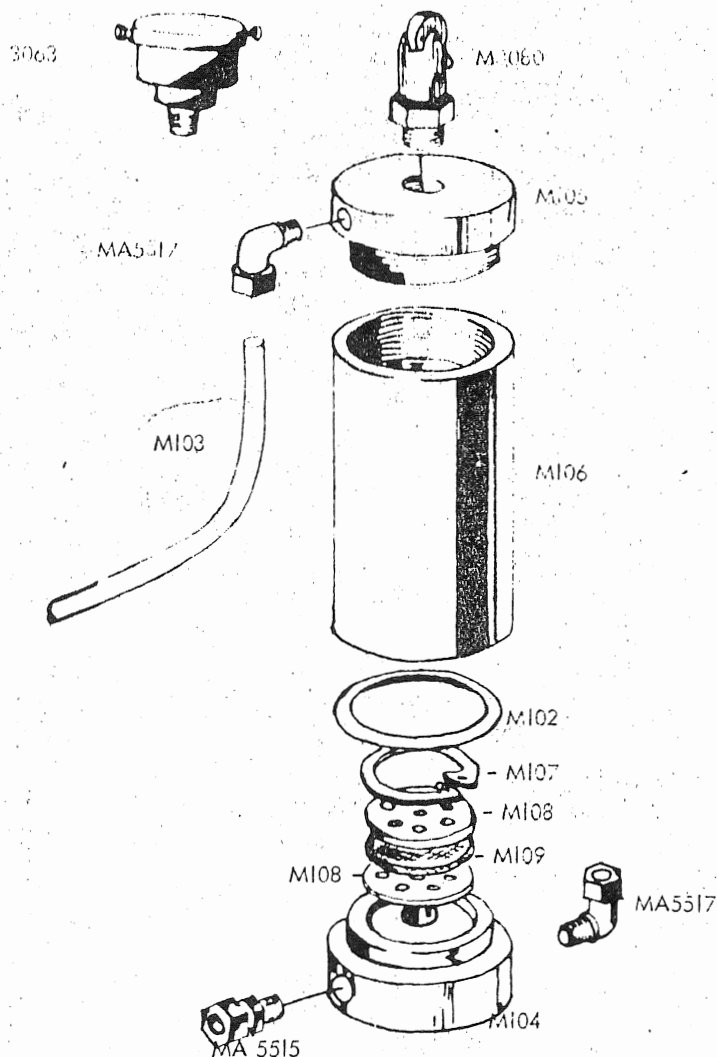
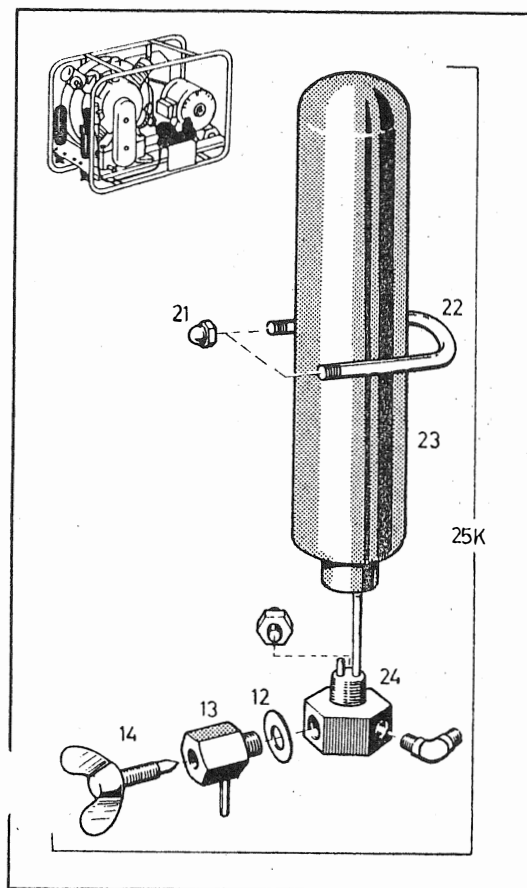
NOTE : This Valve Head is discontinued and will not be restocked,  
 replace with Valve Head PN # 12732  
 Valves are fully interchangeable.



ITEM	ORDER NO:	DESCRIPTION
- 1K	12732	Valve Head complete
- 2		Valve Head Bottom part (not sold separate)
- 5K	7790	Intake Valve complete
- 16K	7780	Outlet Valve complete
- 17	N 150	Allen Head Cap Screw M 8 x 50mm
- 19	N 2789	O-Ring
- 20	12132	Top Cover
- 21	N 902	Fitting GE 6 SR
- 22	N 902	Fitting GE 6 SR

FINAL SEPERATOR & FILTER TO 1972  
SEPERATOR used to 1975

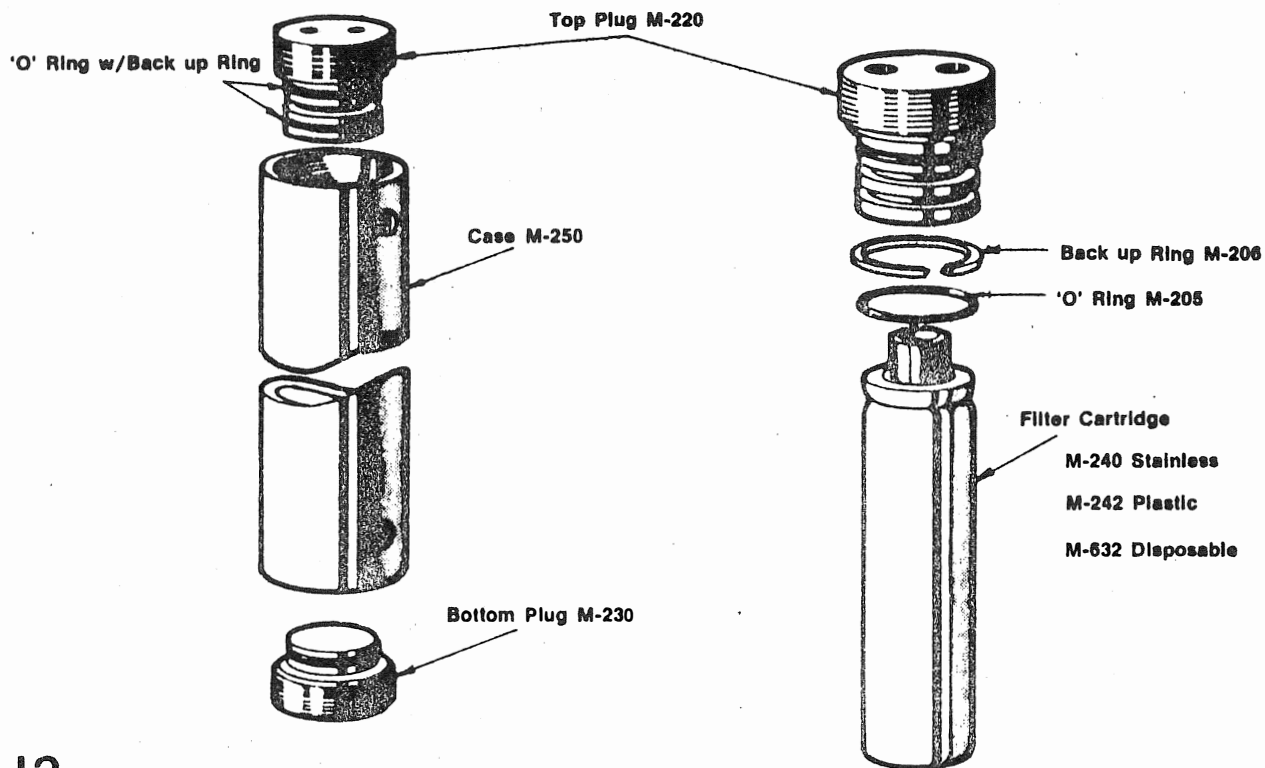
H 11



ITEM	ORDER NO:	DESCRIPTION
-14	55888	Wing Screw
-13	2371	Drain Cock body
-12	N 1316	Gasket
-21	N 84	Cap Nut M 8
-22	5050	U-Bolt
-23	N 73	Separator Bottle (not sold separate)
-24	7387	Distributor (not sold separate)
-25K	8671	Separator complete
3063	3063	Final Safety Valve 3200 PSI
	M 102	O-Ring
	M 103	High Pressure Tubing 6 mm (sold per foot)
	M 104 -M 105 - M 106	(not sold seperate)
	M 107	Retaining Ring
	M 108	Screen
	M 109	Felt Pad
MA 5517	M 1011	Fitting W 6 S / $\frac{1}{4}$ " NPT
MA 5515	M 1001	Fitting GE 6 S / $\frac{1}{4}$ " NPT

## II B

### FINAL PURIFIER FROM 1972 to 1975



## H 12

### FINAL PURIFIER 1975-1976

