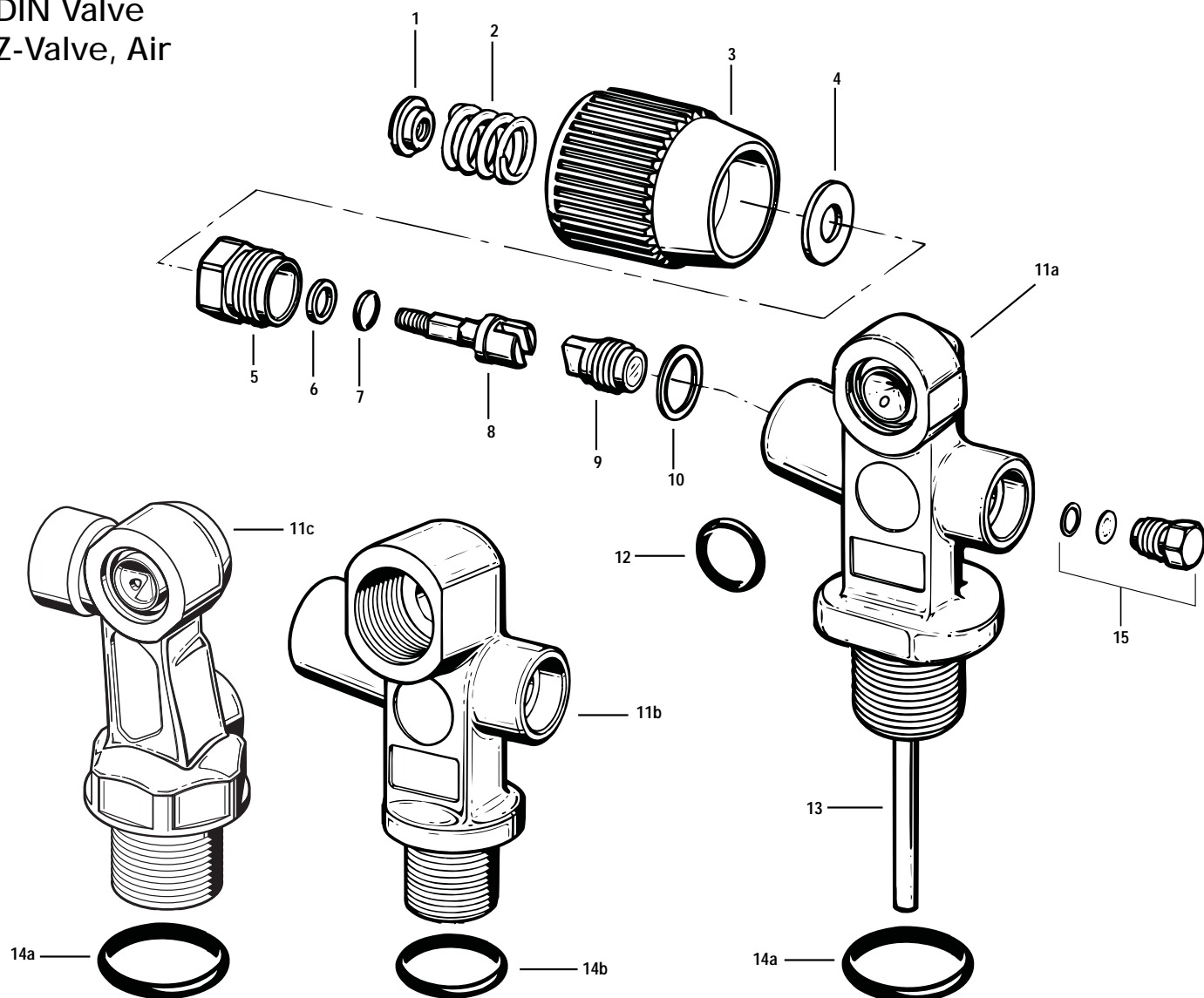


Valves and Connectors

K-Valve
DIN Valve
Z-Valve, Air



Key #	Part #	Description	Key #	Part #	Description
----	NLA	K-Valve - 3,000 psi	11c	N/A	Body, Z-Valve
----	054235	DIN Valve, 240 BAR	12	820014	O-ring, Outlet
----	054295	Z-Valve - 3,000 psi (Air)	13	054215	Dip Tube
1	054207	Nut, Handwheel Retaining	14	820214	O-ring, K-Valve
2	054209	Spring, Handwheel	14b	054114	O-ring, DIN Valve
3	054206	Handwheel	15	054201	Safety Plug Kit, 3,000 psi (Aluminum)
4	054212	Washer	----	054261	Safety Plug Kit, 3,500 psi (HP Steel)
5	054204	Bonnet	----	054221	Safety Plug Kit, 2,400 psi (LP Steel)
6	054205	Washer, Packing	----	054211	Safety Plug Kit, 2,250 psi (LP Steel)
7	820010	O-ring, Stem	n/s	42485	Dust Cap, K-Valve
8	054208	Stem	n/s	42484	Dust Cap, DIN Valve
9	054203	Seat Assembly	n/s	054228	Dust Cap, Z-Valve
10	054216	Gasket, Bonnet			
11a	N/A	Body, K-Valve			
11b	N/A	Body, DIN Valve			

Part numbers in **BOLD ITALICS** indicate standard overhaul replacement part.