



FLAT VALVE PULL DUMP KIT

For WTX-D Wing

Installation Instructions

Introduction

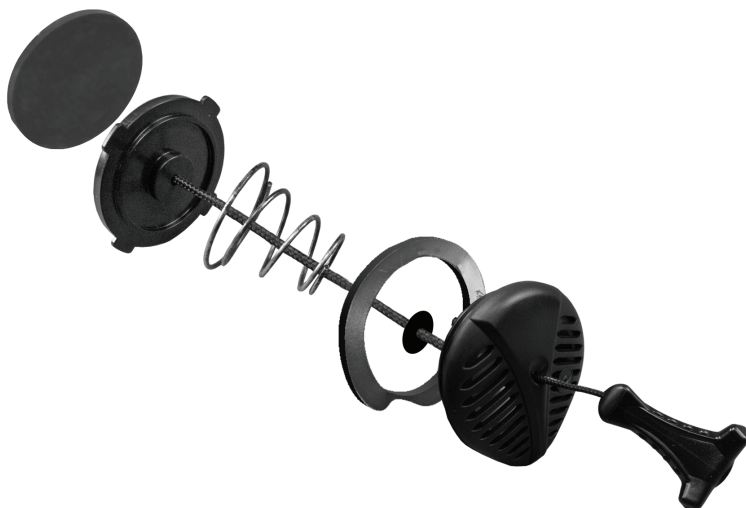
The Flat Valve Pull Dump Kit is a unique, low profile pull dump/over pressure valve kit designed to fit the WTX-D Series of Wings that have a replaceable inner bladder. Please note that this flat valve kit is not interchangeable with the standard Aqua Lung Flat Valve Kit.

Required Tools

Ruler
Lighter or matches
White chalk or other marking device

Preparation

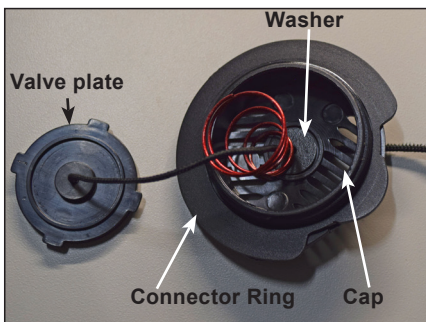
It is best to work on a flat table large enough to accommodate the Wing. Lay the Wing flat on the table with the pull dump facing upward. Confirm existing pull dump has been removed.



Installation of dump valve

Step 1. Installation of spring

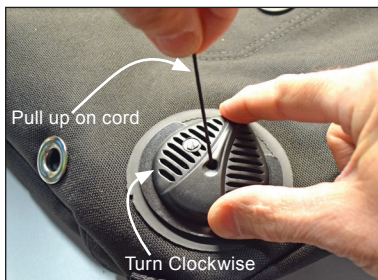
Make sure the washer is threaded onto the cord and fits into the underside of the cap. Properly position the spring inside the dump valve: the small end of the spring contacts the washer on the inside of the cap; the wide end of the spring fits over a small boss on the valve plate. The connector ring fits into the bottom of the cap.



WARNING: The Washer and the Connector Ring must be used as a set or the Wing could leak air and you will not have the proper over-pressure setting on the valve

Step 2. Thread on dump valve

Pull the cord tight enough to compress the spring, this will ensure that the washer is fully seated into the cap. Thread the dump valve onto the Wing. Do not release the cord until the dump valve is threaded all the way onto the Wing. Confirm the cap is fully seated onto the manifold and the connector ring is properly oriented.



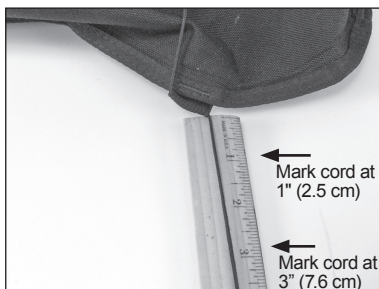
Step 3. Threading the cord

Rear pull dump: Thread the cord through the webbing loop so that the cord is pointing away from the Wing.



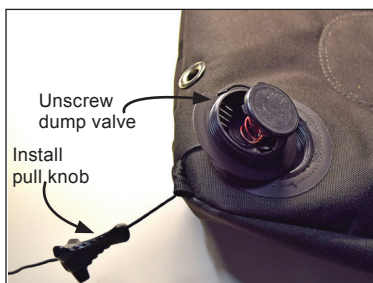
Step 4. Mark the cord

Lightly pull on the cord until it is taut, but don't pull hard enough to open the dump valve. Measure 1" (2.5 cm) from the edge of the sleeve or webbing loop and mark the cord with white chalk or some other marking pen. Then make another mark 3" (7.6 cm) from the edge of the sleeve or webbing.

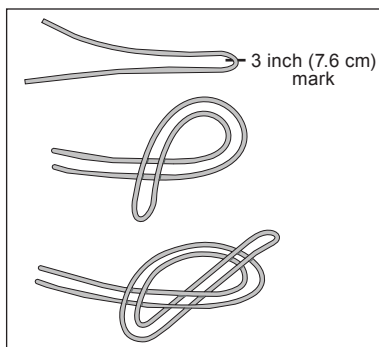


Step 5. Install the pull knob

Unscrew the dump valve from the Wing. Pull on the cord so the dump valve is against the cord sleeve or webbing loop. Insert the free end of the cord through the small hole in the top (small end) of the pull knob. Slide the pull knob up the cord so it rests against the sleeve or webbing loop.



Fold the cord at the 3" (7.6 cm) mark. Tie a double overhand knot as shown. The knot should be 1/2" (1.3 cm) from the 1" (2.5 cm) mark. Pull down on the pull knob so it sits snugly against the knot. Follow the instructions in steps 1 & 2 to reinstall the dump valve assembly.



Step 6. Check pull knob position

After the dump valve assembly is reinstalled, the pull knob should be approximately 1" (2.5 cm) \pm 1/4" (.6 cm) from the sleeve or webbing loop. Confirm the cap is fully seated onto the manifold and the connector ring is properly oriented.



Step 7. Trim and seal the cord

After confirming that the cord length is correct, cut the cord leaving about a 1/2" (1.3 cm) tail. Using a match or lighter, momentarily burn the end of the cord to prevent it from fraying. As soon as the cord begins to "melt" remove the flame.



2340 Cousteau Court • Vista, CA • 92081
www.aqualung.com