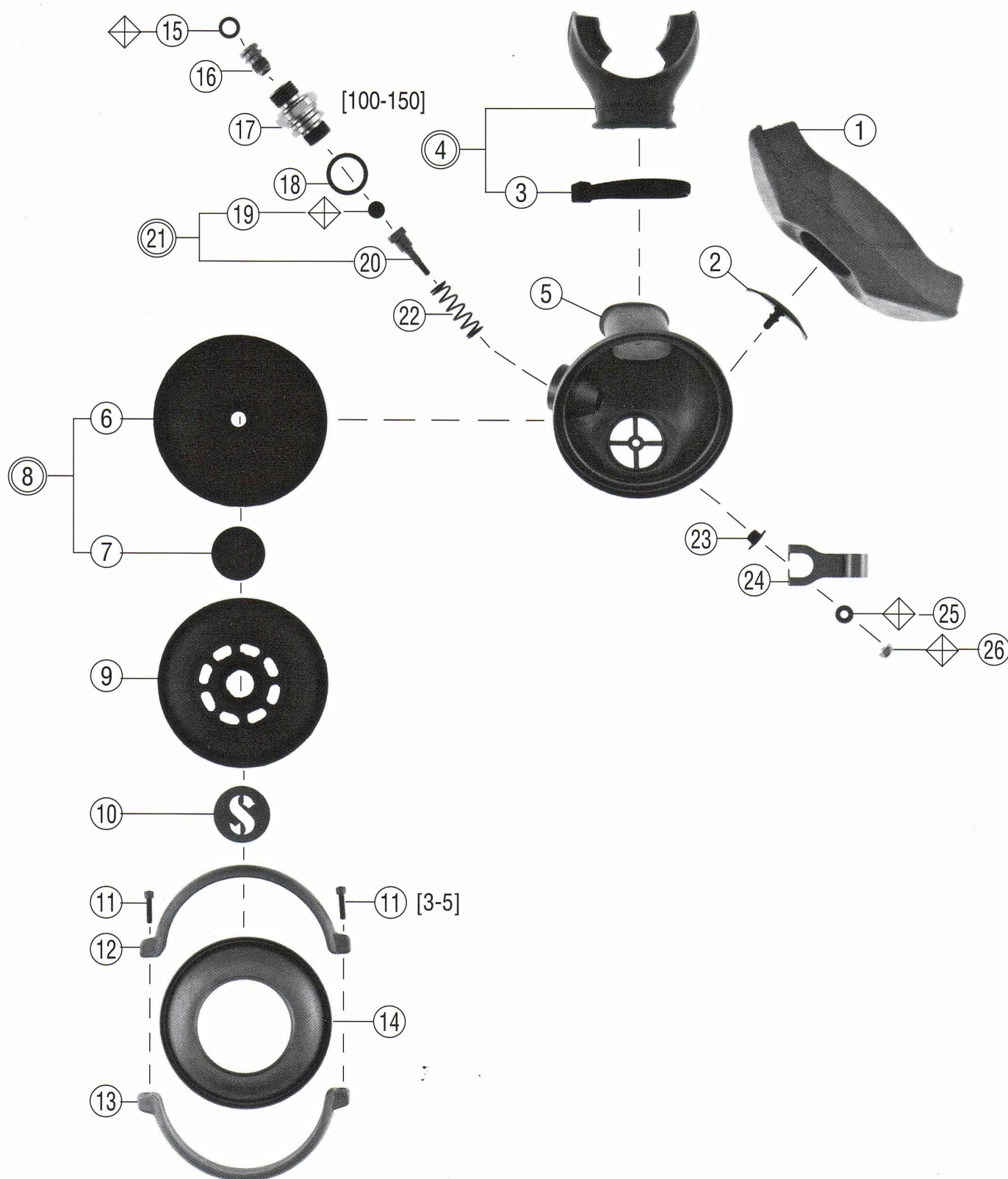


# SCUBAPRO

Technical Service Schematic

## HIGH PERFORMANCE 11-08X-000 SECOND STAGE

Date 12/97      Revision E  
Annual Repair Parts Kit #11-080-041



### Technical Service Schematic

# HIGH PERFORMANCE 11-08X-000 SECOND STAGE

Date 12/97      Revision F  
Annual Repair Parts Kit #11-080-041

## Parts

#	QTY	PART #	DESCRIPTION	COST
1	1	01-043-101	EXHAUST TEE, BLACK	
2	1	11-109-128	EXHAUST VALVE	
3	1	01-088-101	STRAP, MOUTHPIECE, BLACK	
	1	01-088-107	STRAP, MOUTHPIECE, CRYSTAL	
4	1	01-040-010	MOUTHPIECE, BLACK	
	1	01-040-006	MOUTHPIECE, CRYSTAL	
5	1	11-080-005	CASE ASSEMBLY	
6	1	11-109-124	DIAPHRAGM, BLACK	
7	1	11-109-123	DISC, DIAPHRAGM	
8	1	11-109-011	DIAPHRAGM ASSY, BLACK	
9	1	11-109-106	COVER, RUBBER	
10	1	01-005-101	INSIGNIA PLATE	
11	2	01-101-128	SCREW, SOCKET HEAD	
12	1	11-108-110	CLAMP, UNTHREADED	
13	1	11-108-109	CLAMP, THREADED	
14	1	11-108-108	COVER RING	
15	1	01-050-293	O-RING, RED	
16	1	11-109-109	ORIFICE	
17	1	11-190-119	DEMAND VALVE BODY	
18	1	01-050-160	O-RING, BODY, RED	
19	1	11-108-101	SEAT	
20	1	11-108-102	STEM	
21	1	11-108-002	SEAT & STEM ASSY	
22	1	01-020-216	SPRING	
23	1	21-080-121	INSERT, HOUSING	
24	1	11-080-104	LEVER	
25	1	01-060-107	WASHER, PLASTIC	
26	1	01-122-101	NUT, LOCKING, #5-40	

### Technical Information:

The Annual Repair Parts Kit may contain o-rings used in the hose assembly. Refer to the separate hose schematic for identification.

Reference Item #6: The molded part number imprinted on the rubber diaphragm is 11-109-124.



**Special Engineering Notes:**

Item #17 note: P/N 11-190-119 may be substituted if 11-080-101 is unavailable.

Items #20, 21 note: Do not substitute P/N 21-009-007 as they are similar in appearance but different in size.

Item #23 note: Is compatible with later models only.

**Legend** (prices subject to change without notice)

- Not Shown       Dynamic O'Ring Replace Annually  
 ○ Optional Item       Annual Replacement  
 ▲ Limited Warranty      [   ] Torque In Inch Pounds  
 □ Older Configuration      \* See Note