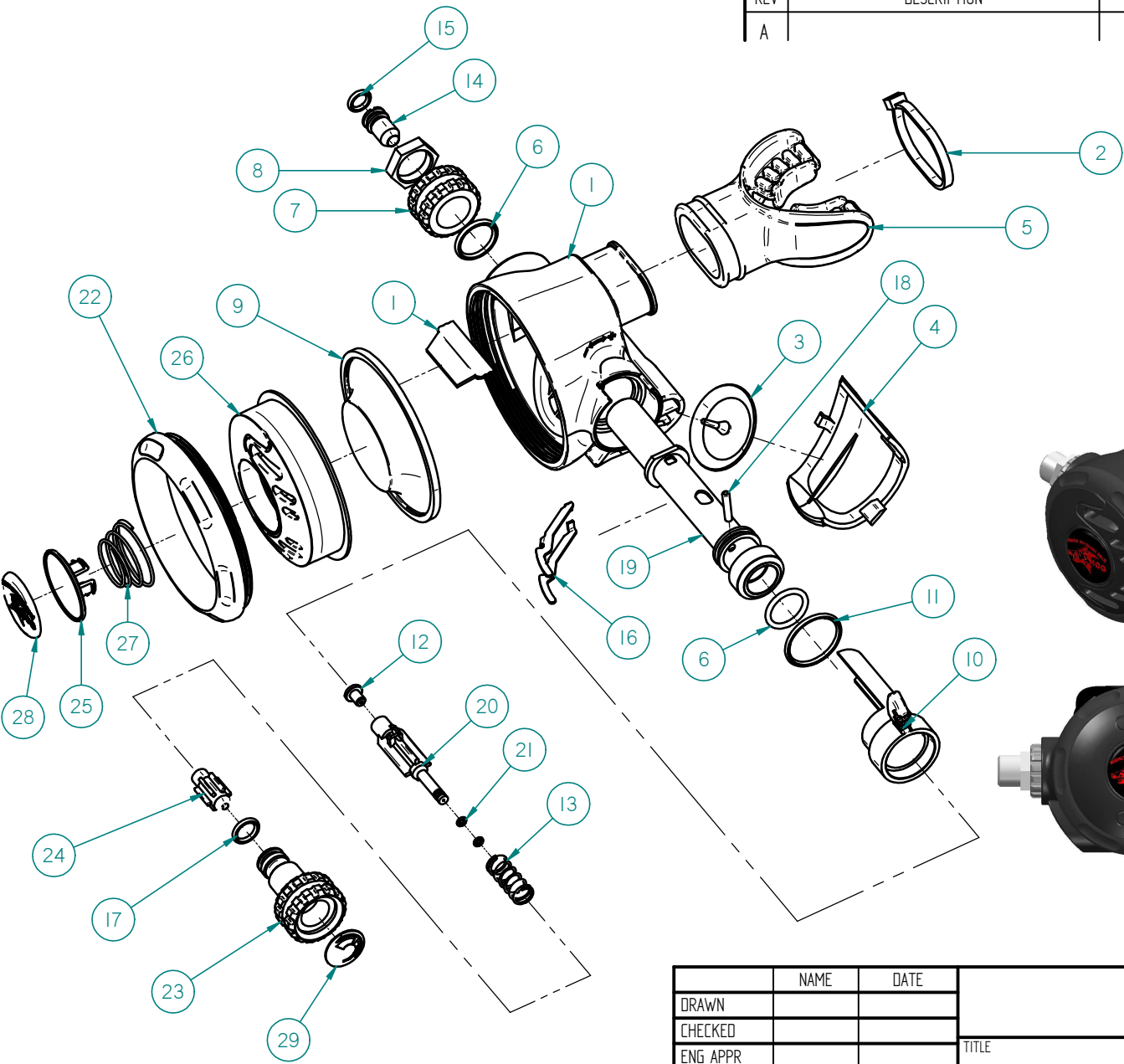


RG11-HOG VERSION-ADJUSTABLE			
NO	ITEM NO	DESCRIPTION	QTY
1	A-02-011-03	MAIN HOUSING	1
	A-02-011-02	DEFLECTOR PAD	1
2	A-02-010-12-BK	NYLON TIE	1
3	A-02-010-02-RD	EXHAUST VALVE	1
4	A-02-011-04	EXHAUST COVER	1
5	Z-10-00005-05-BK-RD	MOUTHPIECE-P8-RED	1
6	O-AS568-015-01	O-RING	2
7	C-02-011-13-PT	BRASS HEAT SINK	1
8	C-02-012-02-PT	NUT	1
9	B-02-011-01-RD	DIAPHRAGM	1
10	A-02-011-07-RD	DEFLECTOR KNOB-RED	1
11	O-AS568-019-01	O-RING	1
12	A-02-011-08	LP SEAT	1
13	D-02-011-01	MAIN SPRING	1
14	C-02-011-03	ORIFICE	1
15	O-AS568-010-01	O-RING	1
16	S-02-011-01	LEVER ARM	1
17	O-AS568-011-01	O-RING	1
18	C-02-011-05	ADJUSTABLE KNOB PIN	1
19	C-02-011-04-PT	ADJUST TUBE	1
20	A-02-012-08	PISTON	1
21	O-EKM-2MX1M-05	O-RING	2
22	C-02-011-14-01	ALUMINUM RING	1
23	C-02-011-10-PT	ALL BRASS ADJ. KNOB	1
24	A-02-012-09	BLANCE CYLINDER	1
25	A-02-011-17-BK	PURGE BUTTON	1
26	A-02-011-20-BK	SOILD COVER	1
27	D-02-003-02	PURGE SPRING	1
28	3Y-04-00036-01	HOG DECAL	1
29	3Y-04-00024-01	DECAL	1
30			



REVISION HISTORY			
REV	DESCRIPTION	DATE	APPROVED
A			

NAME		DATE		
DRAWN				
CHECKED				
ENG APPR			TITLE	
MGR APPR				
UNLESS OTHERWISE SPECIFIED DIMENSIONS ARE IN MILLIMETERS ANGLES ±XX° 2 PL ±X.XX 3 PL ±X.XXX			SIZE A3	DWG NO
			SCALE:	WEIGHT:
			SHEET 1 OF 1	