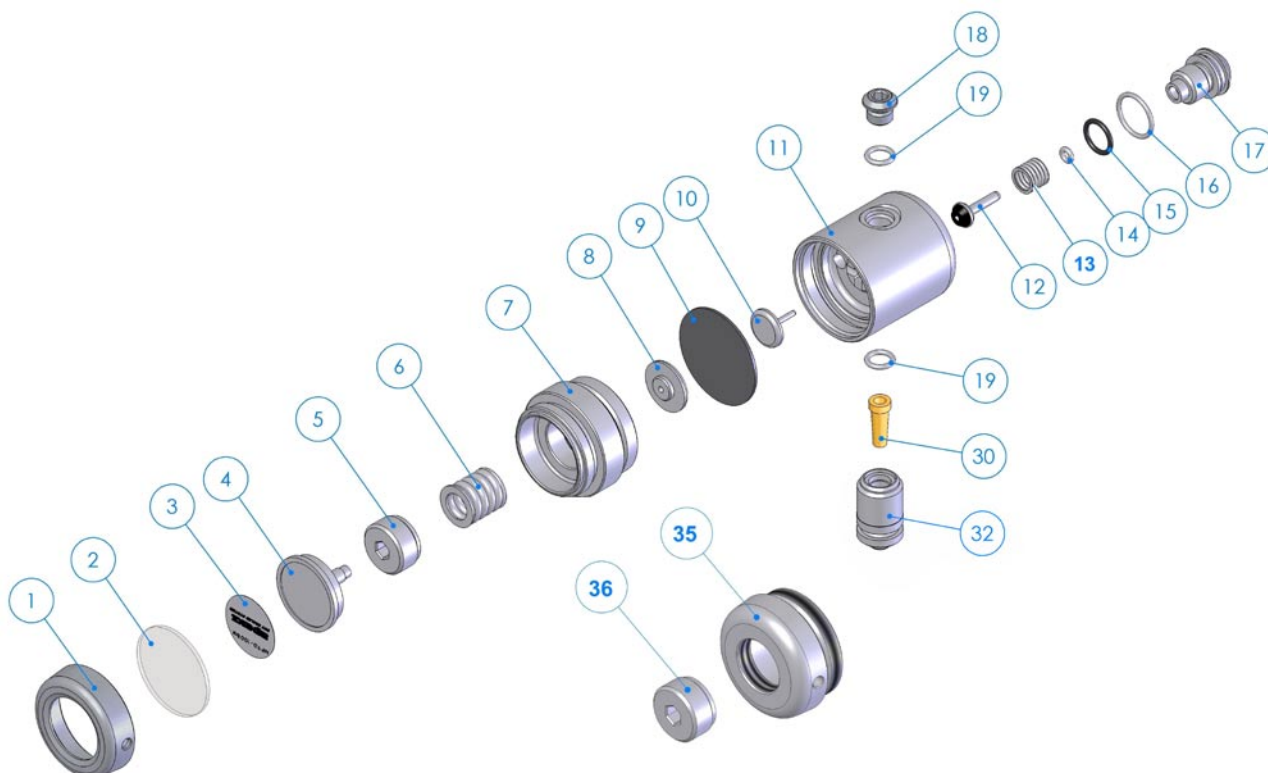


Extrair Exploded Parts Diagram



* All marked items must be replaced when serviced.

1	AP1484	Environmental End Cap	19*	AP1409	'O' Ring
2*	AP1482	Hydrostatic Diaphragm	20	N/A	
3	AP1477	Environmental Decal	21	N/A	
4	AP1483	Hydrostatic Transmitter	22	N/A	
5	AP1474	Spring Adjuster	23	N/A	
6	AP1475	Spring	24	N/A	
7	AP1473	Diaphragm Clamp	25	N/A	
8	AP1476	Spring Carrier	26	N/A	
9*	AP1478	Diaphragm	27	N/A	
10	AP1479	Valve Lifter	28	N/A	
11	AP5203	Valve Body	29	N/A	
12*	AP1419	H.P. Valve	30*	AP1472	Conical Filter
13	AP1415	Spring	31	N/A	
14*	AP1299	'O' Ring	32	AP6510	Connector Nut
15*	AP1410	'O' Ring	33	N/A	
16*	AP1300	'O' Ring	34	N/A	
17	AP5309	H.P. Balance Plug	35	AP1485	Diaphragm Cap
18	AP1408	3/8" UNF Blanking Plug	36	AP1474/1	Spring Adjuster