

DRAWING NO : E 1226	SECOND STAGE DUAL ADJ - OCTOPUS DUAL ADJ	UPDATED : 21/06/2018
---------------------	---	----------------------

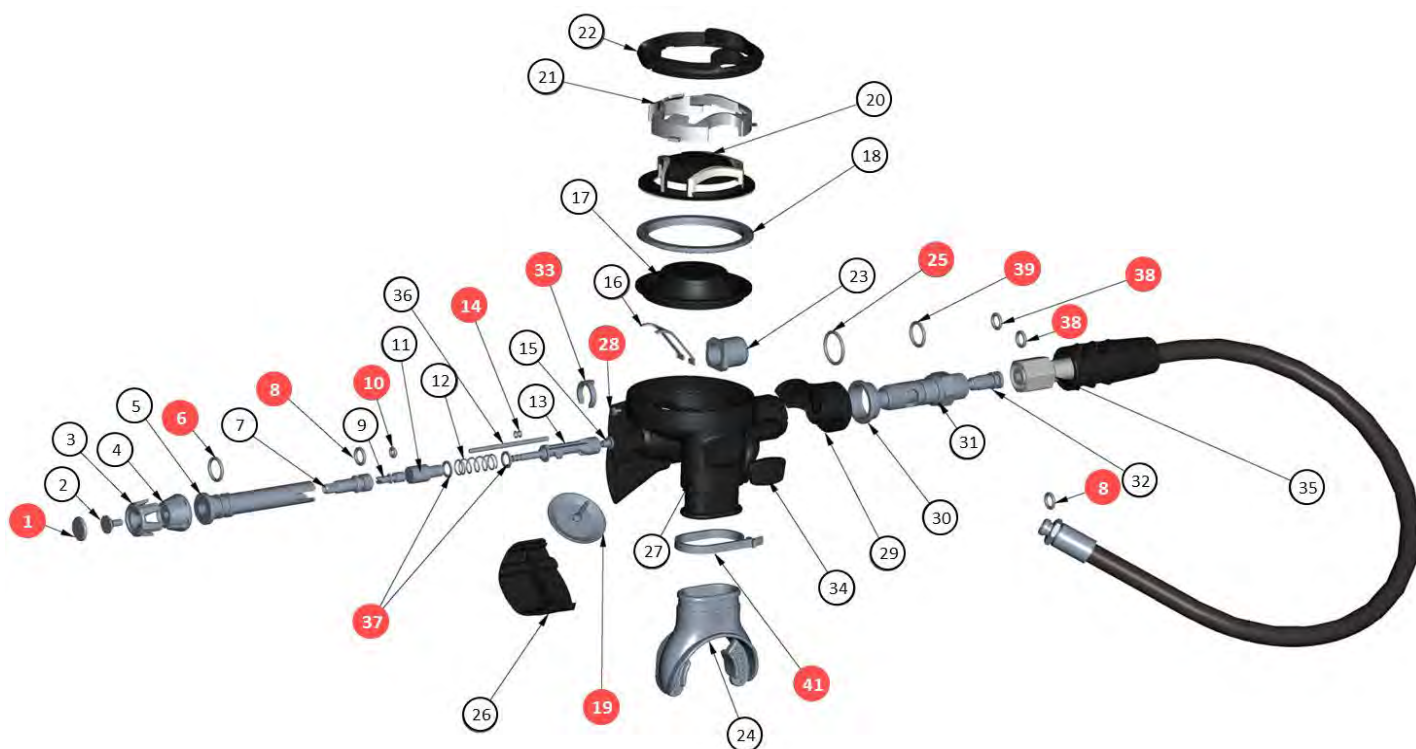


CHART NO : 137	SECOND STAGE DUAL ADJ - OCTOPUS DUAL ADJ	UPDATED: 21/12/2018
----------------	---	---------------------

REF	CODE	DESCRIPTION	€	REF	CODE	DESCRIPTION	€
1	46201607	KNOB LABEL		28	46184289	SAFETY PIN-COVER	
2	46201612	KNOB SCREW		29	46201678	SIDE ADAPTER, DUAL ADJ	
3	46201616	UPPER KNOB		30	46200779	SPACER RING	
4	46201637	LOWER KNOB		31	46201689	HOSE CONNECTOR	
5	46201555	BALANCING TUBE		32	46200204	POPPET SEAT	
6	46110110	OR 2037		33	46201563	PLASTIC CLIP	
7	46201557	ADJUSTING SCREW		34	46201651	DUAL ADJ LABEL	
8	46110106	OR 106		35	46201379	LP HOSE 3/8" SFX black 75 cm WO/HOSE PROTECTOR	
9	46201559	PRE-SETTING SCREW		36	46200361	EXHAUST PLUG PIN	
10	46110101	OR 2012		37	46201648	WASHER BALANCED PISTON	
11	46201560	LP BALANCING CHAMBER		38	46110205	OR 2025	
12	46201561	BALANCING PISTON SPRING		39	46110114	OR 114	
13	46201604	BALANCING PISTON		40	46201661	SECOND STAGE BUTTON OCTOPUS	
14	46201606	OR 1.78 X 1.02		41	47157984	CLAMP MOUTHPIECE	
15	46201605	RUBBER SEAT		42	46201606	OR 1.78 X 1.02	
16	46201564	DEMAND LEVER		---	46201381	LP HOSE 3/8" SFX yellow 100 cm WO/HOSE PROTECTOR	
17	46201364	DIAPHRAGM BLACK		---	46201249	HOSE PROTECTOR	
18	46200773	DIAPHRAGM RING		---	46201473	HOSE PROTECTOR SECOND STAGE	
19	46201194	EXHAUST VALVE, SECOND STAGE		---	46186090	OCTOPUS PLUG	
20	46201660	SECOND STAGE BUTTON		ASSEMBLIES			
21	46201679	SECOND STAGE BUTTON FRAME		---	46201729	SERVICE KIT SECOND STAGE E.U.D. ADJ	
22	46201658	THREADED RING		E	46200855	10 PACK BLACK MOUTHPIECES	
23	46201627	BALANCING TUBE BUSHING		NOTE			
24	E	MOUTHPIECE		Parts highlighted in red are included in the service kits 46201729			
25	46110220	OR 2062					
26	46201636	INSPECTION PLUG					
27	46201635	SECOND STAGE CASE					