

33. 8/8/2010 9:22:55 AM

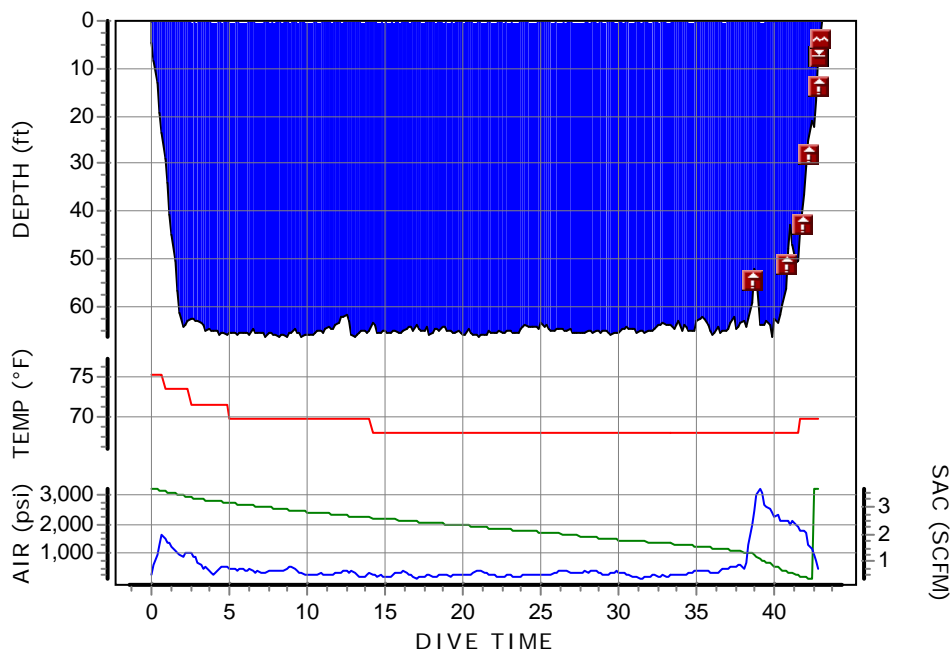
china wreck

## Information from dive computer

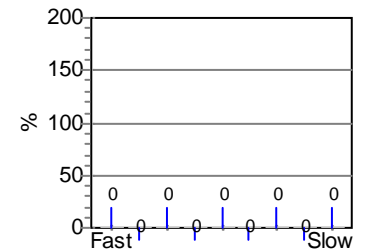
Dive no.	33	Weather	
Start time	8/8/2010 9:22:55 AM	Visibility	
End time	8/8/2010 10:04:55 AM	Weight used	0 lbs
Dive time	00:42.00	Temperatures	
Max depth	67 ft	Start of dive	75 °F
DC Dive no.	1	Max depth	70 °F
Surface Interval	00:00.00	End of dive	70 °F
ID no.	81203119	Buddy	
Personal info	Suunto Diver	Boat name	
Model	Cobra2	Dive Master	
Sampling Rate	10 sec	Custom 1	
Altitude mode	A0	Custom 2	
Personal settings	P0	Custom 3	
Dive type	Air	Custom 4	
Alarms Recorded	9	Custom 5	
Oxygen Percent	21%	Dive gear	
OLF	7 %		

## Other information

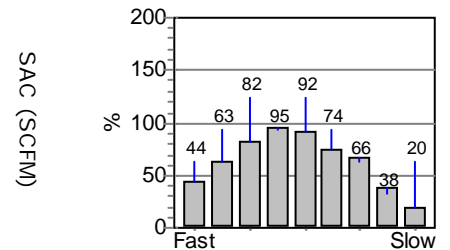
Dive manually added	No
Tissue pressures invalid	No
Cylinder size	120 cu ft
Working pressure	3500 psi
Cylinder pressure	
Start	3185 psi
End	0 psi
Average depth	62 ft
SAC Rate	0.8 SCFM
Air used	
Pressure used	3185 psi
Rate used	75.8 psi/min
Volume gas used	109.2 cu ft



Tissue saturation on start



Tissue saturation on end



## Notes

rescued diver out of air emergency ascent