

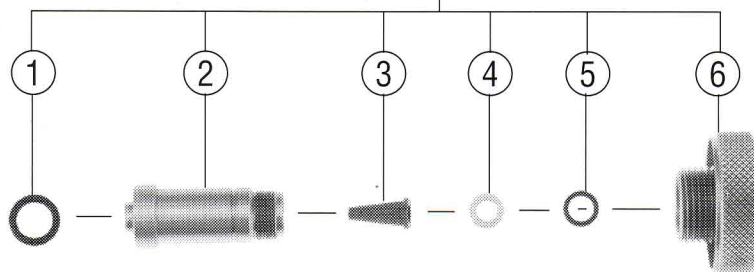
SCUBAPRO

Technical Service Schematic

DIN ADAPTERS

Date 9/94 Revision A

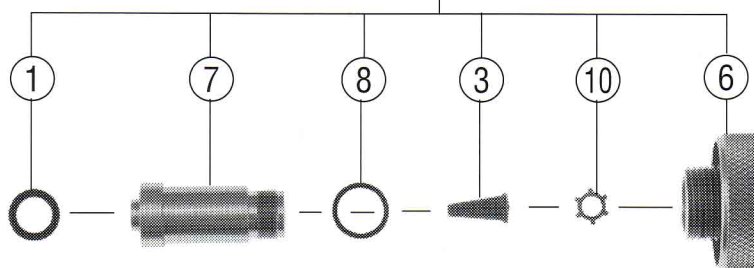
10-400-030



MK 9, MK 10, MK 15

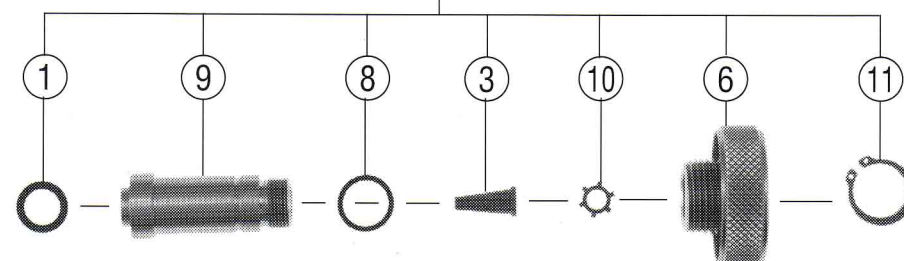
10-043-030

FIRST STAGE
DIN ADAPTERS



MK 2, MK 3, MK 200

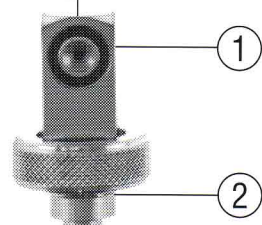
10-105-030



MK 5

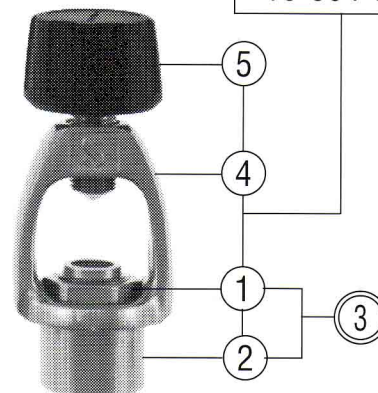
DIN VALVE TO
YOKE ADAPTER
200 BAR (3000 PSI) ONLY

10-005-000



DIN FIRST STAGE TO
YOKE ADAPTER

10-004-000



SCUBAPRO

Technical Service Schematic

Parts

#	QTY	PART #	DESCRIPTION	COST
FIRST STAGE DIN ADAPTERS				
1	1 1 1	01-050-193	O-RING, BLACK	
2	1 0 0	10-400-107	RETAINER, 300 BAR, MK9,10,15	
3	1 1 1	01-028-109	FILTER, CONICAL	
4	1 0 0	01-060-501	WASHER	
5	1 0 0	01-050-142	O-RING,	
6	1 1 1	10-105-118	KNOB, 300 BAR	
7	0 1 0	10-103-114	RETAINER, 300 BAR, MK2,3,200	
8	0 1 1	01-050-380	O-RING, AMBER	
9	0 0 1	10-105-116	RETAINER, 300 BAR, MK5	
10	0 1 1	01-073-108	FILTER RETAINER	
11	0 0 1	01-073-107	RETAINER, SNAP RING	
	10-400-030 10-043-030 10-105-030			

#	QTY	PART #	DESCRIPTION	COST
		10-005-000	DIN VALVE TO YOKE ADAPTER	
1	1	01-050-193	O-RING, BLACK	
2	1	01-050-157	O-RING, BLACK	

#	QTY	PART #	DESCRIPTION	COST
		10-004-000	DIN FIRST STAGE TO YOKE ADAPTER	
1	1	10-004-104	NUT, DIN TO YOKE	
2	1	10-004-103	ADAPTER, DIN TO YOKE	
3	1	10-004-003	SUBASSY, NUT & ADAPTER	
4	1	10-101-131	YOKE	
5	1	10-200-008	YOKE SCREW ASSY, 9/16	

DIN ADAPTERS

Date 9/94

Revision A

Technical Information:

Special Engineering Notes:

Legend (prices subject to change without notice)

- Not Shown ◇ Dynamic O'Ring Replace Annually
- Optional Item ◇ Annual Replacement
- ▲ Limited Warranty [] Torque In Inch Pounds
- Older Configuration * See Note