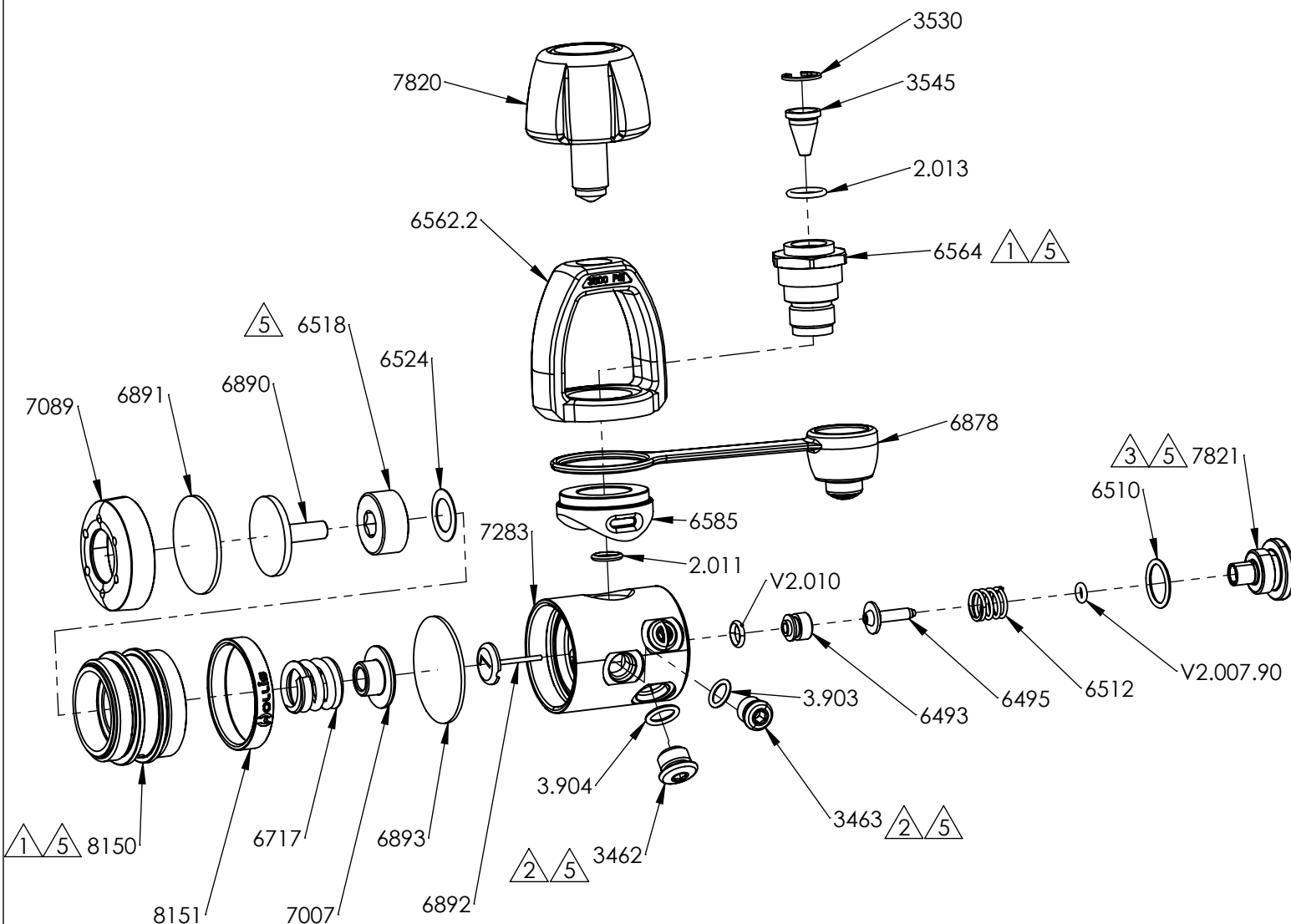


NOTES:

- 1 TORQUE TO 23 - 25 ft-lbs
- 2 TORQUE TO 35 - 40 in-lbs
- 3 TORQUE TO 140 in-lbs
- 4 LUBRICATE THREADS USING CHRISTO-LUBE MCG#129N
- 5. LUBRICATE ALL O-RINGS USING CHRISTO-LUBE MCG#129N
- 6. IP TO BE SET TO 134-142 PSI WHEN SUPPLY PRESSURE IS 500-3000 PSI

FOR THE MOST UP TO DATE SERVICE SCHEMATIC, PLEASE VISIT HUISHOUTDOORS.COM/DATABANK



NOTES: (UNLESS OTHERWISE SPECIFIED)

- 1 TORQUE TO 23 - 25 ft-lbs
- 2 TORQUE TO 35-40 in-lbs
- 3 TORQUE TO 80-100 in-lbs
- 4. SET IP TO 134 - 142 PSI WHEN INLET PRESSURE IS 500 - 3000 PSI
- 5 LUBRICATE THREADS USING CHRISTO-LUBE MCG 129N
- 6. LUBRICATE ALL O-RINGS USING CHRISTO-LUBE MCG 129N

FOR THE MOST UP TO DATE SERVICE SCHEMATIC, PLEASE VISIT HUISHOUTDOORS.COM/DATABANK