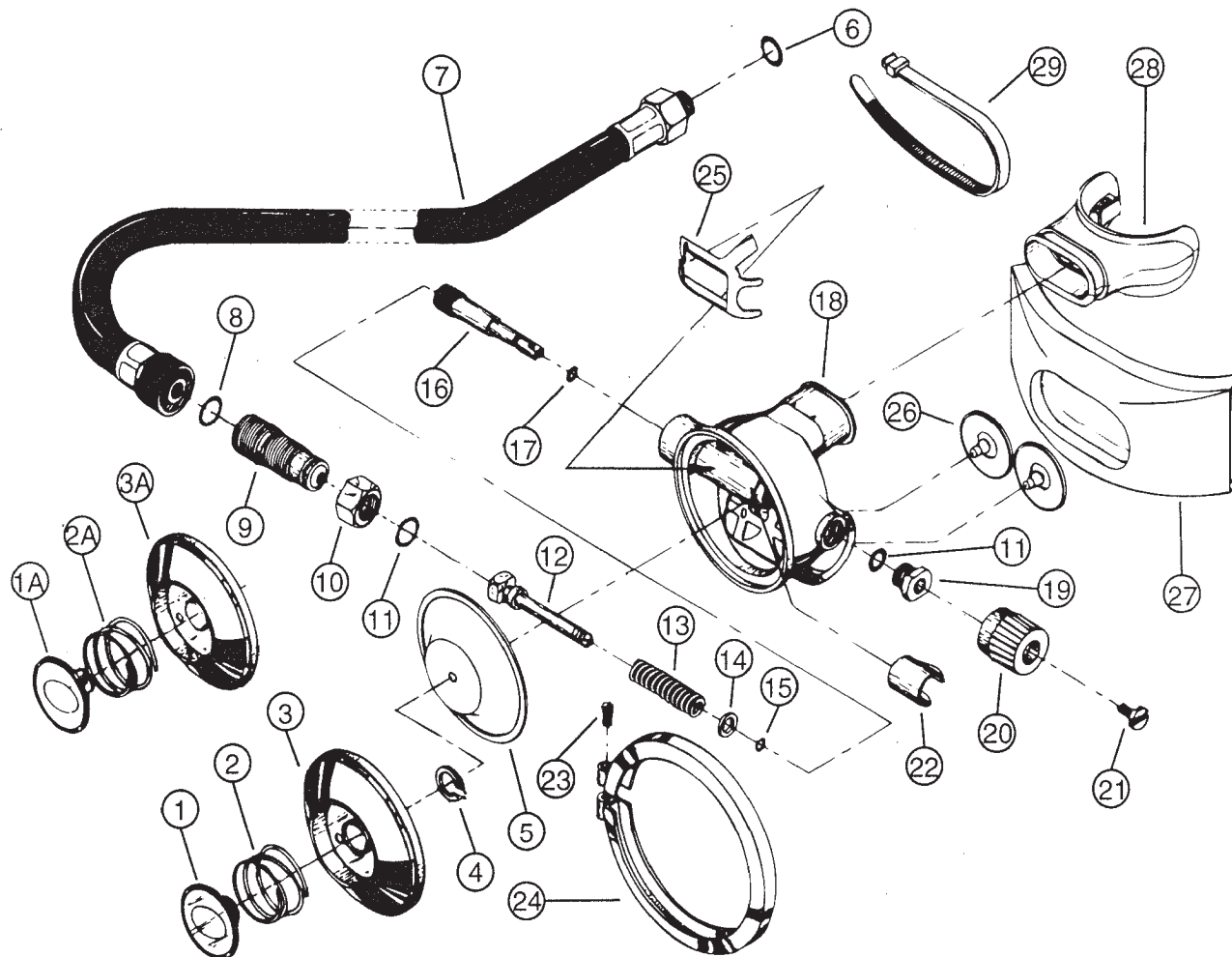


#	QTY	PART #	KEY	DESCRIPTION
1	1	0106-58		PURGE BUTTON ASSEMBLY
1A	1	0110-07	Ⓜ	PURGE BUTTON ASSEMBLY
2	1	0040-15		SPRING
2A	1	0040-38	Ⓜ	SPRING
3	1	0170-39		TOP COVER
3A	1	0170-77	Ⓜ	TOP COVER (SUB 0622-13)
4	1	0250-05		CLIP
5	1	0050-09		DIAPHRAGM ASSEMBLY
6	1	0060-51	Ⓢ	O-RING
7	1	1726-00		L.P. HOSE ASSEMBLY 26"
8	1	0060-02	Ⓢ	O-RING
9	1	0180-85		VALVE SEAT (SUB 0182-43)
10	1	0150-29		JAM NUT
11	1	0060-01	Ⓢ	O-RING
12	1	0107-98	Ⓢ	L.P. SEAT ASSEMBLY
13	1	0040-72		SPRING
14	1	0120-95		WASHER
15	1	0060-61	Ⓢ	O-RING
16	1	0350-16		SHAFT
17	1	0060-16	Ⓢ	O-RING
18	1	0108-16		BOTTOM BOX
19	1	0410-28		PLUG
20	1	0560-19		KNOB
21	1	0130-47		SCREW
22	1	0250-07		SPRING CLIP

#	QTY	PART #	KEY	DESCRIPTION
23	1	0130-13		RING SCREW
24	1	0100-85		CLAMP RING ASSM
25	1	0170-55		LEVER (SUB 0170-91)
26	2	0240-04		EXHAUST VALVE
27	1	0512-25		EXHAUST MANIFOLD
28	1	1117-00		MOUTHPIECE
29	1	0310-09	Ⓢ	CLAMP



PACER XLB
SECOND STAGE

9/93

Second Stage
Regulators

PAGE

2-25

KEY

Ⓢ Included in annual service kit #9680-03

Ⓜ Oct. 1988 to present, Must be used together.