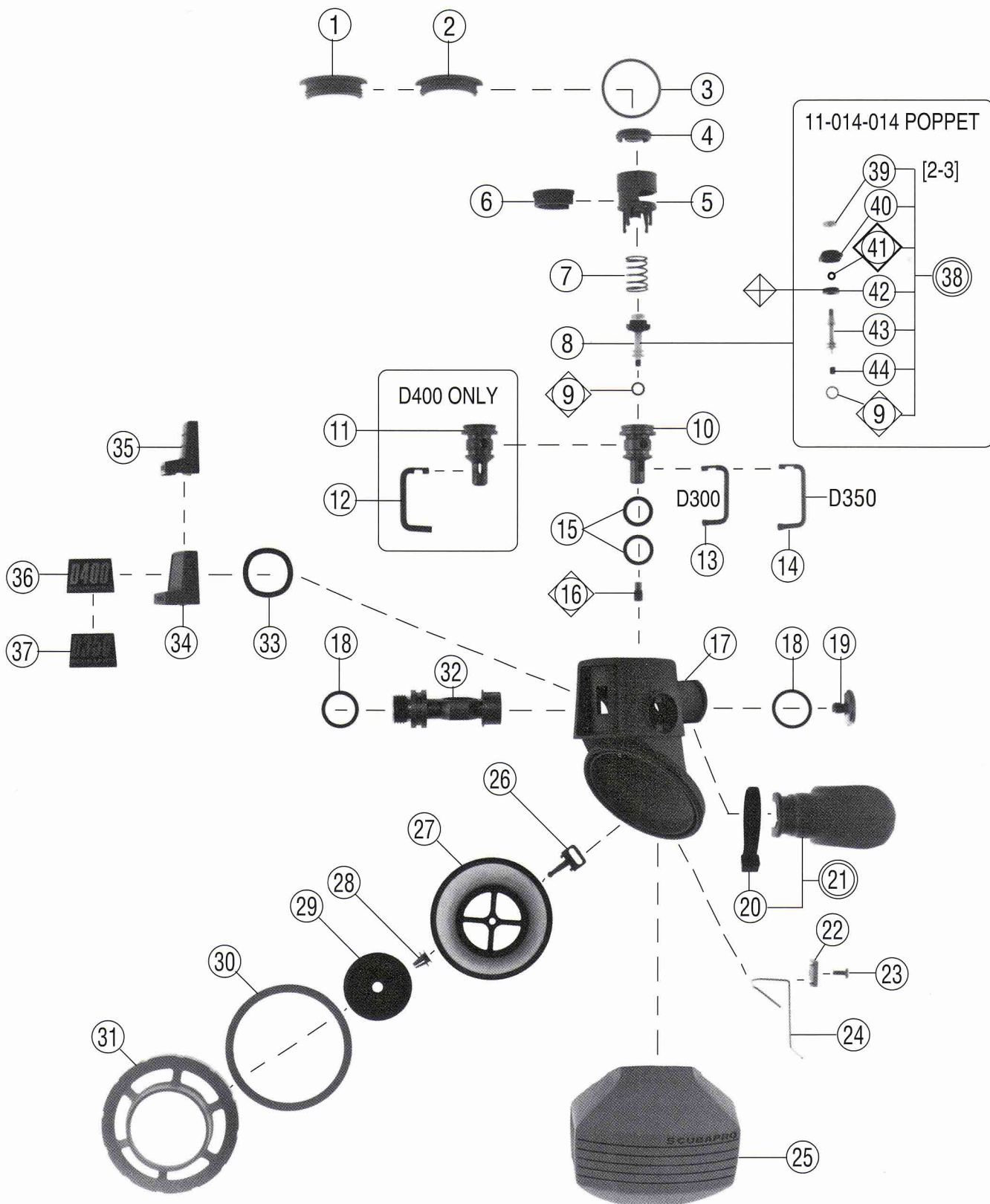


# SCUBAPRO

Technical Service Schematic

D400/350/300 #11-01X-000

Date 12/97 Revision F  
Annual Repair Parts Kit #11-014-041



# SCUBAPRO

Technical Service Schematic

## Parts

**D400/350/300 #11-01X-000**

Date 12/97 Revison F  
Annual Repair Parts Kit #11-014-041

#	QTY	PART #	DESCRIPTION	COST
* 1	1 1 1	11-011-126	CAP, FOR 11-011-009 CASE ASSY	
2	N/A	11-011-107	CAP, EARLY PROD. FOR 11-011-002 CASE	
3	1 1 1	01-050-177	O-RING, CAP, BLUE	
4	1 1 1	11-011-106	PAD, SPRING	
5	1 1 1	11-011-105	ASPIRATOR	
6	1 1 1	11-011-115	FLOW DIRECTOR	
7	1 1 1	01-020-155	SPRING, POPPET	
8	1 1 1	11-014-014	POPPET ASSEMBLY (MODULAR)	
9	1 1 1	01-050-323	O-RING, BLUE	
10	0 1 1	11-011-010	HOUSING, D350, D300	
11	1 0 0	11-014-010	HOUSING, D400	
* 12	1 0 0	11-014-103	LEVER, D400	
13	0 0 1	11-126-106	LEVER, D300	
14	0 1 0	11-012-103	LEVER, D350, (LONGER THAN #13)	
15	2 2 2	01-050-147	O-RING, PURPLE	
* 16	1 1 1	11-011-120	SET SCREW	
17	1 1 1	11-011-009	CASE ASSY	
□	0 0 1	11-011-002	CASE ASSY, EARLY PROD., NOT AVAIL.	
18	2 2 2	01-050-160	O-RING, INLET, RED	
19	1 1 1	11-011-117	RETAINER, INLET	
▲ 20	1 1 1	01-088-101	STRAP, MOUTHPIECE, BLACK	
	1 1 1	01-088-107	STRAP, MOUTHPIECE, CRYSTAL	
▲ 21	1 1 1	01-040-010	MOUTHPIECE, BLACK	
	1 1 1	01-040-006	MOUTHPIECE, CRYSTAL	
22	1 1 1	11-011-114	RETAINER, SWITCH	
23	1 1 1	01-101-132	SCREW, SWITCH, #10-40	
24	1 1 1	11-011-118	WIREFORM SPRING	
25	1 1 1	11-011-116	COVER, EXHAUST, RUBBER	
* 26	1 1 1	11-011-103	LINKAGE, LEVER	
27	1 1 1	11-011-003	DIAPHRAGM	
28	1 1 1	11-011-110	RETAINER, EXHAUST	
29	1 1 1	11-011-109	EXHAUST VALVE	
30	1 1 1	11-011-111	WASHER, THRUST	
31	1 1 1	11-011-122	COVER, DIAPHRAGM	
32	1 1 1	11-011-102	INLET	
33	1 1 1	01-050-211	O-RING, BLACK	
34	1 1 0	11-012-002	SWITCH, BLACK	
□ 35	N/A	11-011-004	SWITCH, D300, NOT AVAIL. USE ITEM #34	
36	1 0 0	01-006-604	DECAL, D400, BLUE	
	1 0 0	01-006-607	DECAL, D400, PINK	
37	0 1 0	01-006-599	DECAL, D350, BLUE	
	0 1 0	01-006-603	DECAL, D350, PINK	
38	1 1 1	11-014-014	POPPET ASSY, MODULAR	
* 39	1 1 1	01-121-218	NUT	
* 40	1 1 1	11-014-252	POPPET	
41	1 1 1	01-050-399	O-RING, BLACK	
42	1 1 1	11-015-015	SEAT, MOLDED	
43	1 1 1	11-012-106	STEM	
44	1 1 1	11-012-107	FRICTION CAP	
	D400 D350 D300			

### Technical Information:

The annual Repair Parts Kit may contain o-rings used in the hose assembly. Refer to the separate hose schematic for identification. Reference Item #39: use a 7/32" nut driver or a 5.5mm nut driver.

### Special Engineering Notes:

D300 and D350 second stages can upgraded to D400 by substituting the appropriate parts indicated in the schematic.

The D350 uses a slightly longer lever (item #14) than the D300 and new switch assembly (item #34) with decal (item #37).

The D400 requires a thicker lever (larger diameter wire) item #12 and new housing (item #11). It also requires the latest configuration lever linkage (item #26) to fit the thicker lever.

Item #26 note: The earlier configuration of this part has a narrow slot that will not fit the D400 lever. Use only the latest configuration with the larger slot when using the 11-014-103 lever. The older configuration is no longer available. The newer configuration may be used with any lever combination.

Item #2 note: This cap will only fit the early production case assy p/n 11-011-002. It is no longer available. Replace with cap item #1 and new case assembly p/n 11-011-109.

Item #16 note: This screw contains a locking element to keep it tight in the housing. Repeated disassembly will wear away the locking element. Replace this screw during annual disassembly and any time there is any looseness during assembly. Failure to do so could cause the lever to slacken and degrade performance significantly.

Item #12 note: This lever is installed into the housing from the hose side of the case. This is opposite the installation for the D350/300, where it is placed opposite the hose side of the case.

Reference Item #40: White poppet replaces Red, Orange and Gray. (See Engineering Bulletin #237 & #238)

### Legend (prices subject to change without notice)

- Not Shown    ◇ Dynamic O'Ring Replace Annually
- Optional Item    ◇ Annual Replacement
- ▲ Limited Warranty    [ ] Torque In Inch Pounds
- Older Configuration    \* See Note