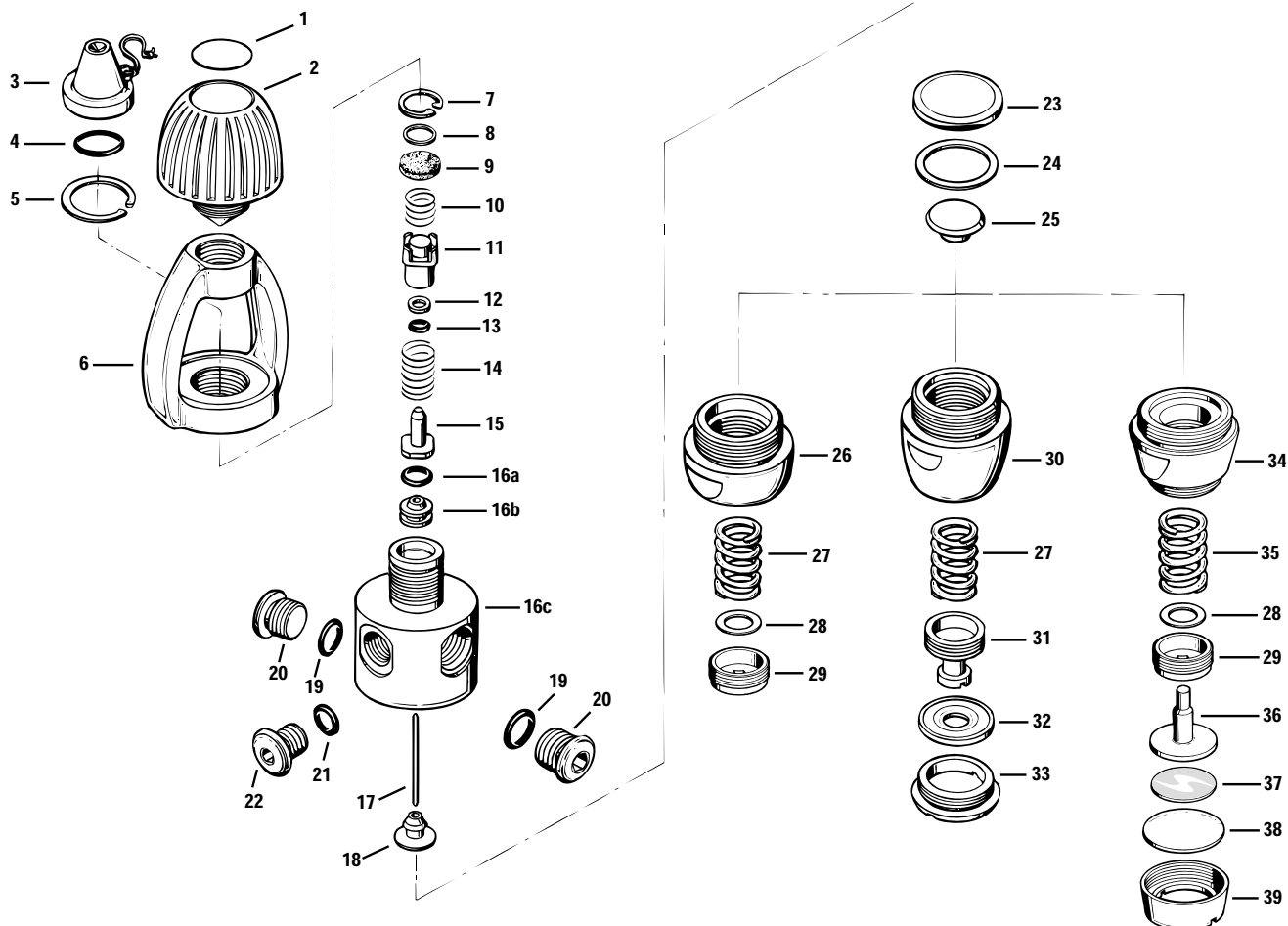


First-Stage Regulators

Conshelf 22 w/ Removable Crown



Key #	Part #	Description
----	900001	Overhaul Parts Kit, non-Supreme
1 ----	100388	Decal
2 ----	107506	Yoke Screw
3 ----	101012	Dust Cap
4 ----	820120	O-ring
5 ----	861068	Retaining Ring
6 ----	700418	Yoke
7 ----	863051	Retaining Ring
8 ----	845095	Washer, Filter
9 ----	105106	Filter
10 ----	104613	Spring
11 ----	105324	Spring Block
12 ----	828005	Back-up Ring
13 ----	820080	O-ring
14 ----	101504	Spring
15 ----	105940	HP Seat
16a ---	820038	O-ring
16b ---	106027	Crown
16c ---	100309	Body
17 ----	102002	Pin
18 ----	106022	Pin Support
19 ----	957025	O-ring (1/2" Port)
----	820011	O-ring (3/8" Port)
20 ----	102004	Port Plug, Low Pressure, 1/2"
----	104304	Port Plug, Low Pressure, 3/8"
21 ----	957004	O-ring (7/16" HP Port)
22 ----	102003	Port Plug, High Pressure
23 ----	103429	Diaphragm

Key #	Part #	Description
24 ----	821026	Thrust Washer
25 ----	101728	Spring Pad
26 ----	105926	Spring Retainer
27 ----	105327	Spring
28 ----	845097	Washer, Main Spring (non-Supreme only)
29 ----	106026	Adjustment Screw
Used on Externally Fine Adjustable Supreme		
30 ----	105927	Spring Retainer, Supreme
31 ----	105936	Adjustment Screw, EFA Supreme
32 ----	108852	Secondary Diaphragm, EFA Supreme
33 ----	108854	Diaphragm Retainer, Supreme
n/s ---	108865	Silicone Fluid, 2 oz.
DRY Environmental Chamber		
----	100525	Dry Environmental Kit, Conshelf, Complete
34 ----	106317	Spring Retainer
35 ----	106356	Spring
36 ----	106319	Piston
37 ----	106338	Decal
38 ----	106337	External Diaphragm
39 ----	106318	Diaphragm Retainer

Part numbers in **BOLD ITALICS** indicate standard overhaul replacement part.