

LAST REVISED 02/19/20

PART NUMBER 9840.3 CDX YOKE



- CONFIDENTIAL PROPERTY OF HUISH OUTDOORS.

Doc. OC.01.02.0008

Last Revised 02/19/20

9840.3 CDX YOKE BOM		
PART NUMBER	DESCRIPTION	QTY
9841.4	Body CDX (Satin)	1
9858	END CAP ENVIRONMENTAL	1
8374.07	DIAPHRAGM ENVIRONMENTAL (BLACK)	1
8372	TRANSFER PISTON ENVIRONMENTAL	1
6518	ADJUSTMENT CUP	1
6524	WASHER	1
3302	O-ring 33mm X 2mm	1
8373	END CAP DIAPHRAGM	1
6717	SPRING DIAPHRAGM	1
7007	PLATE DIAPHRAGM	1
1.000031	MAIN DIAPHRAGM	1
8168	BUTTON PIN	1
3463	PLUG LP	3
3.903	O-RING	3
3462	PLUG HP	2
3.904	O-RING	2
V2-010	ORING VITON	1
6494	HP Seat (Short)	1
6495	HP POPPET	1
6512	SPRING	1
9850	Label Frame	1
9857.3	CDX Label	1
V2.007.90	O-RING	1
6510	O-RING EPDM	1
9842.4	RECEIVER (SATIN)	1
9852	DUST CAP YOKE	1
V2.011	ORING VITON	1
9859	YOKE RETAINER SHORT	1
V2-013	ORING VITON	1
3545	FILTER	1
3530	Retaining Clip	1
9851.3	YOKE MACHINED 2016 (BEAD BLAST)	1
9853	Yoke Knob	1

This cDX Service Procedure conveys a list of components and service procedures that reflect the cDX as it was configured at the time of this writing.

Doc. OC.01.02.0008

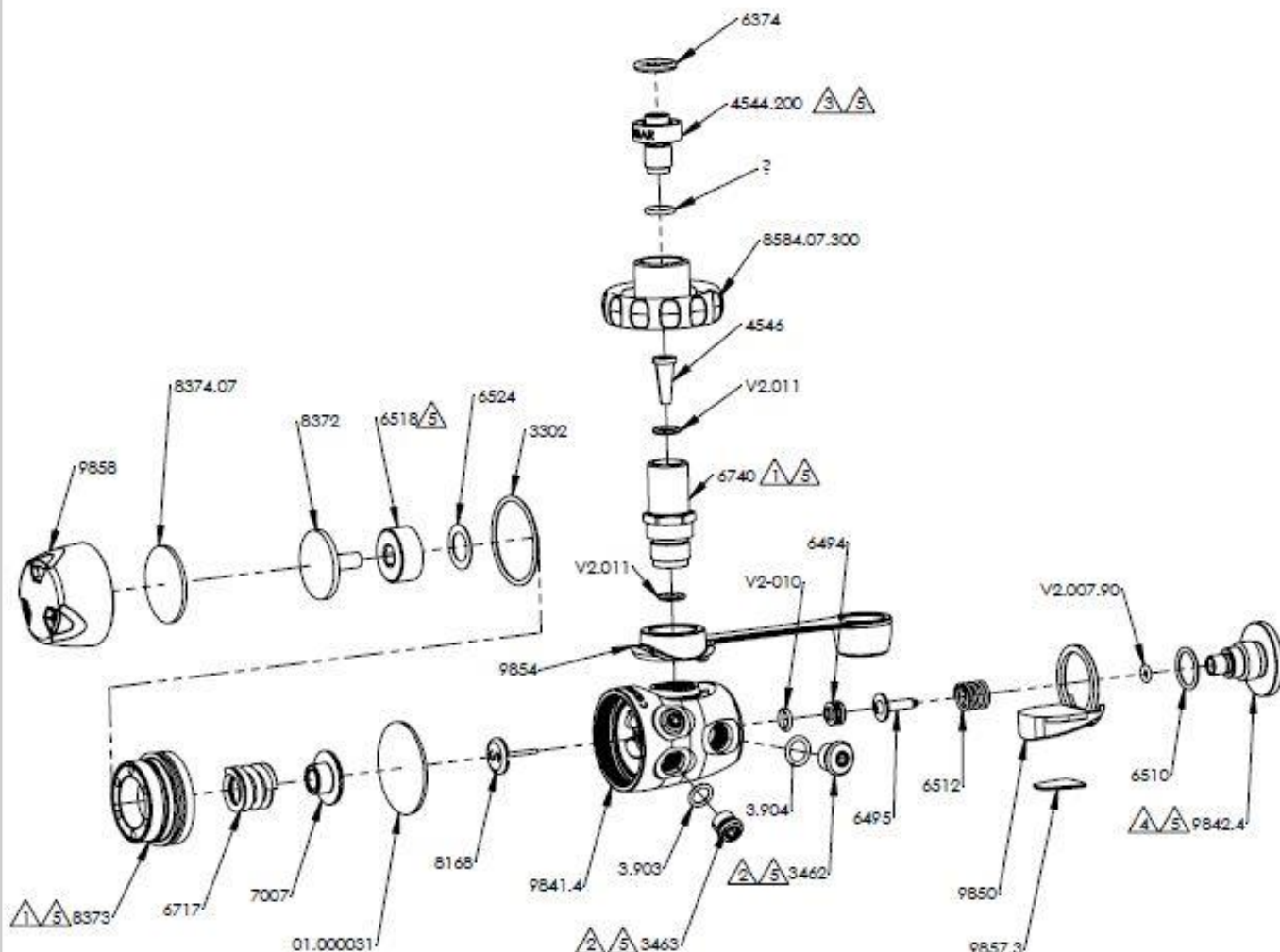
Last Revised 02/19/20

SERVICE SCHEMATIC

LAST REVISED 02/19/20

OCEANIC

PART NUMBER 9840.4 CDX DIN



NOTES:

- 1 TORQUE TO 23 - 25 ft-lbs
- 2 TORQUE TO 35 - 40 in-lbs
- 3 TORQUE TO 140 in-lbs
- 4 TORQUE TO 80 - 100 in-lbs
- 5 LUBRICATE THREADS USING CHRISTO-LUBE MCG#129N
6. LUBRICATE ALL O-RINGS USING CHRISTO-LUBE MCG#129N
7. IP TO BE SET TO 134-142 PSI WHEN SUPPLY PRESSURE IS 500-3000 PSI

FOR THE MOST UP TO DATE SERVICE SCHEMATIC, PLEASE VISIT HUISHOUTDOORS.COM/DATABANK

HUISH OUTDOORS, 3585 Cadillac Ave. Costa Mesa, CA 92626 p.714.375.1433

CONFIDENTIAL PROPERTY OF HUISH OUTDOORS.

This cDX Service Procedure conveys a list of components and service procedures that reflect the cDX as it was configured at the time of this writing.

Doc. OC.01.02.0008

Last Revised 02/19/20

9840.4 CDX DIN BOM		
PART NUMBER	DESCRIPTION	QTY
9841.4	Body CDX (Satin)	1
9858	END CAP ENVIRONMENTAL	1
8374.07	DIAPHRAGM ENVIRONMENTAL (BLACK)	1
8372	TRANSFER PISTON ENVIRONMENTAL	1
6518	ADJUSTMENT CUP	1
6524	WASHER	1
3302	O-ring 33mm X 2mm	1
8373	END CAP DIAPHRAGM	1
6717	SPRING DIAPHRAGM	1
7007	PLATE DIAPHRAGM	1
1.000031	MAIN DIAPHRAGM	1
8168	BUTTON PIN	1
3463	PLUG LP	3
3.903	O-RING	3
3462	PLUG HP	2
3.904	O-RING	3
V2-010	ORING VITON	1
6494	HP Seat (Short)	1
6495	HP POPPET	1
6512	SPRING	1
9850	Label Frame	1
9857.3	CDX Label	1
V2.007.90	O-RING	1
6510	O-RING EPDM	1
9842.4	RECEIVER (SATIN)	1
9854	DUST CAP DIN	1
V2.011	O-RING VITON	2
6740	HOUSING DIN FILTER	1
4546	DIN FILTER	1
8584.07.300	DIN WHEEL ASSY (BLACK)	1
4544.2	DIN FILTER RETAINER	1
6374	O-RING, 2-112	1

This cDX Service Procedure conveys a list of components and service procedures that reflect the cDX as it was configured at the time of this writing.

Doc. OC.01.02.0008

Last Revised 02/19/20