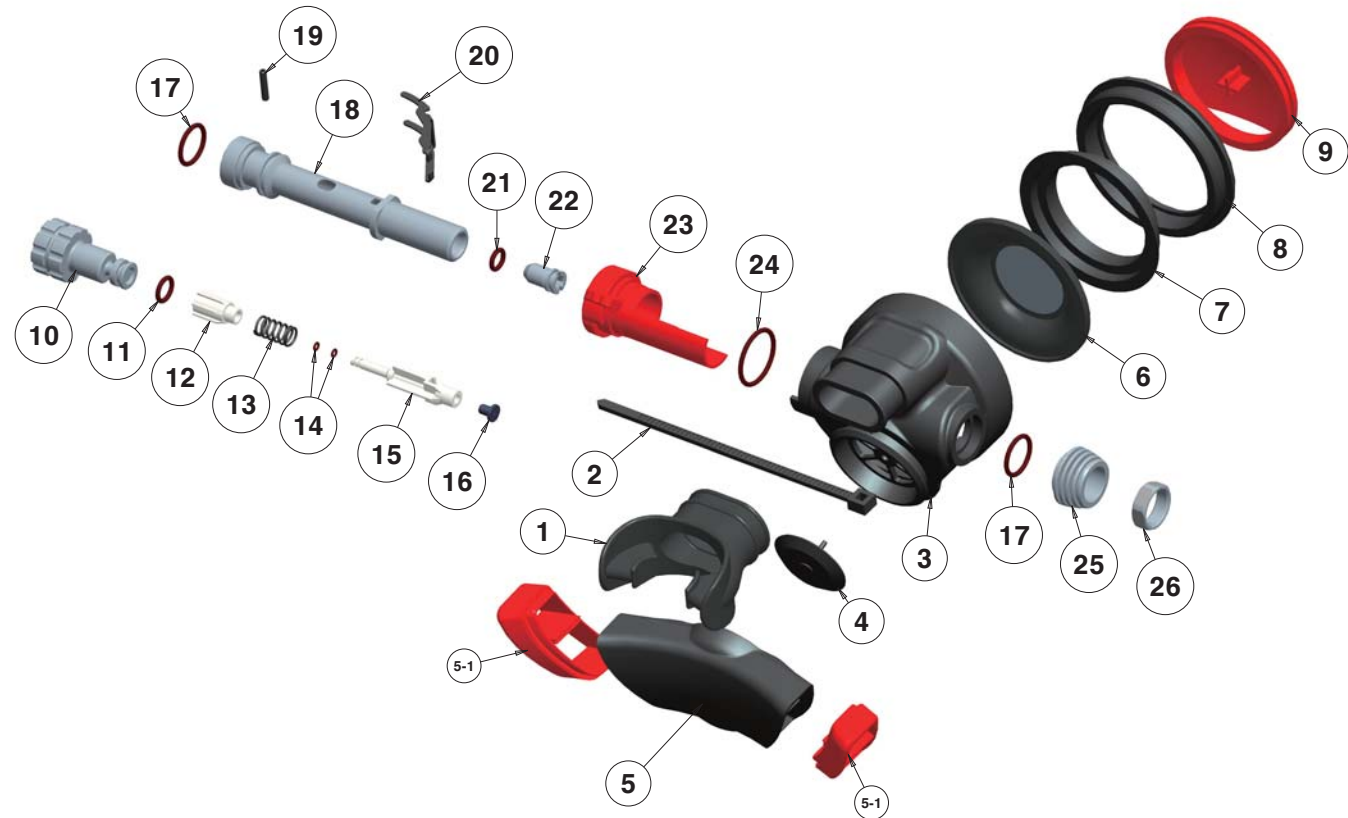


REVISION				
LTR	DESCRIPTION	DATE	APPR	ECN NO
A	RELEASE	2013/09/13		

BZ-2 REGULATOR PART LIST			
NO	ITEM NO	DESCRIPTION	Q'TY
1	SMP-05-RD/BK	MOUHPICE	1
2	0182	NYLON TIE	1
3	0171	MAIN HOUSING	1
4	0177	EXHAUST VALVE	1
5	0469-BK	EXHAUST COVER	1
5-1	0470-RD	EXHAUST COVER PLUG	1
6	0185	DIAPHRAGM	1
7	0199	DIAPHRAGM WASHER	1
8	0188	COVER RING - ALUMINUM	1
9	0471	PURGE BUTTON-UTD	1
10	0442	ADJUST KNOB-BRASS	1
11	1-78-19-03	O-RING	1
12	0174	BALANCE CYLINDER	1
13	0181-BK	SPRING	1
14	3-9532-03	O-RING	2
15	0192	PISTON	1
16	0193	LP SEAT	1
17	2-015-03	O-RING	2
18	0172	ADJUST TUBE	1
19	0183-BK	ADJUST KNOB PIN	1
20	0184-BK	LEVER ARM	1
21	2-010-03	O-RING	1
22	0194	ORIFICE	1
23	0190	DEFLATOR KNOB	1
24	2-019-03	O-RING	1
25	0311	BUSHING-BRASS	1
26	0176	NUT	1
27			



BALANCED SECOND STAGE REGULATOR

DO NOT SCALE THIS DRAWING		DATE	2013/09/13	<div>UTD Equipments</div> <div>BZ-2 Regulator</div>	
UNLESS OTHERWISE SPECIFIED DIMENSIONS ARE IN MM TOLERANCES ANGLES 0-90° X (0-1) XX (0-90) FRACTION (0-1/64)		DRAWN	AMOR		
		CHECKED			
		APPROVED			
MATERIAL:		FINISH:		SIZE	USED ON
SEE NOTES		SEE NOTES		D	
				DRAWING NO. REG-UTD2-BAL	
				REV A	
				SCALE: 0.333	
				FILENAME:	
				SHEET 1 OF 1	