

USER'S MANUAL

DESCRIPTION :

The Beuchat VS. 2 is a single hose, two stages, open circuit, demand regulator.

The "balanced piston" type 1st stage is connected to the scuba tank valve and reduces its air pressure to about 140 Psi above the ambient pressure of the low pressure hose. That 140 Psi intermediate pressure is conducted by the low pressure hose to the 2nd stage and then reduced to ambient pressure.

The 1st stage has four 3/8" intermediate pressure ports on swivel for attachment of :

- the primary second stage held in the diver's mouth
- an additional second stage (octopus)
- a power inflator system for the buoyancy compensator.

The 1st stage also has two 7/16" high pressure ports for attachment of a tank pressure gauge (a 7/16" to 3/8" adaptor plug is available. Cat. n° 7098).

The "downstream" type 2nd stage provides the diver with ambient pressure air on demand. It has a plastic housing to be at the same time very lightweight and extremely durable. The diaphragm and the exhaust valve are made of very soft material (silicon) for maximum breathing comfort.

You can change the hose connection (from right to left) on the second stage ; this operation must be performed by an authorized Beuchat Service Center.

CAUTION :

Don't use the 1st stage as a tank carrying handle. When not in use, don't let the 1st stage sitting on the tank valve.

CLEANING :

Rinse your regulator abundantly in fresh water after use in pool or ocean. Obtainate first the high pressure entry with the rubber protector.

Then let fresh water flow freely through the 1st stage cap holes as well as through the second stage mouthpiece and exhaust tee. Let dry thoroughly. You may at that time plug your first stage on a tank valve and open the valve for a few seconds in order to push away any drop of water that could have entered through the high pressure port when rinsing.

STORAGE :

After cleaning operations, hang your regulator by its yoke away from exposure to heat or sunlight.

When not in use for a long time, store your regulator in a fresh, clean and dry place without obturator plug on. Put baby powder on the low pressure hose and grease the yoke screw thread.

MAINTENANCE :

You must have your complete regulator inspected yearly at an authorized Beuchat Service Center.



BEUCHAT U.S.A. Inc

2900 S.W. 2nd Avenue - Fort Lauderdale, FL 33315 - U.S.A.
Phone (305) 53-7242 - Telex 514 339

Notice Détendeur

VS2

REGULATOR MAINTENANCE MANUAL



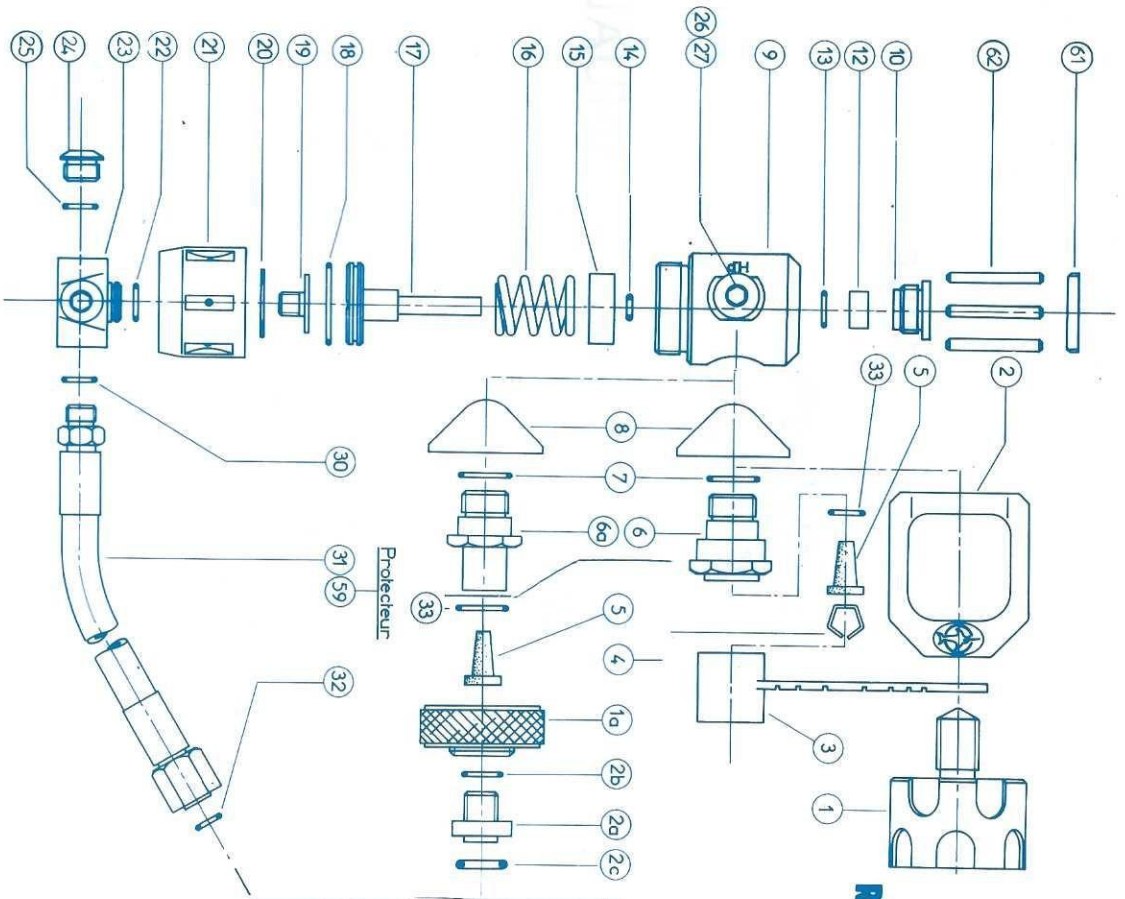
BEUCHAT

VS2

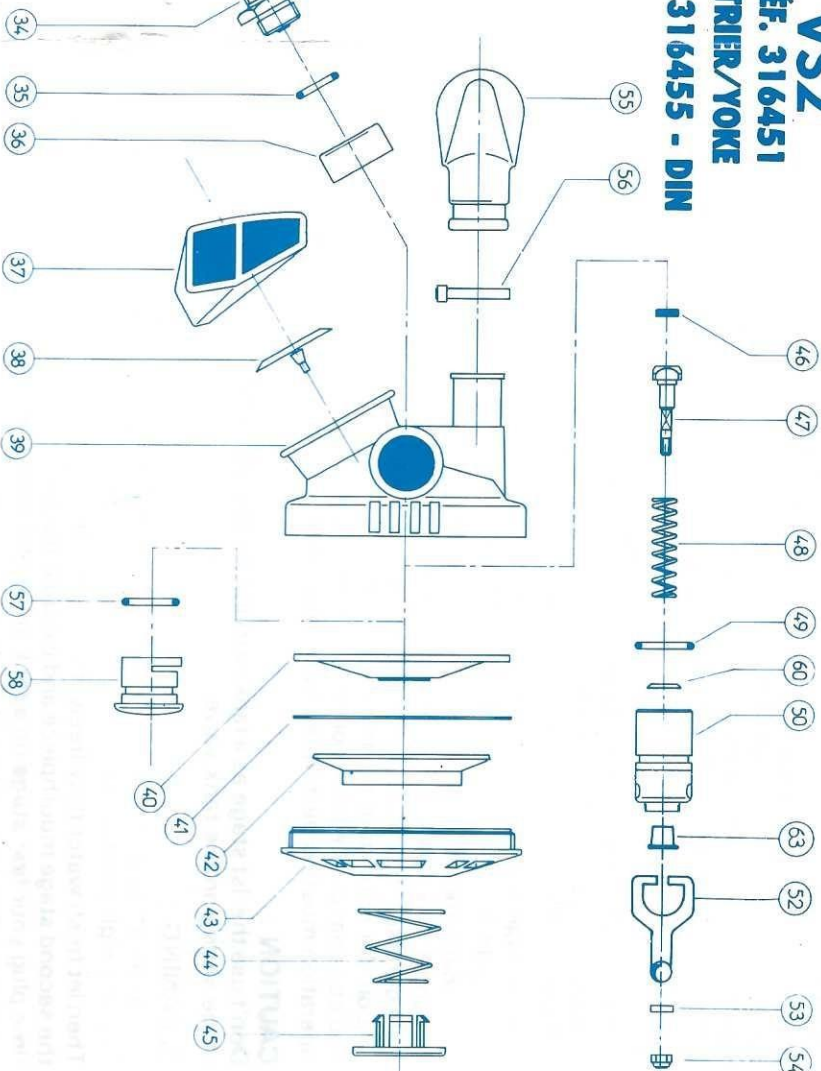
RÉF. 316451

ÉTRIER/YOKE

RÉF. 316455 - DIN



Rep.	Référence	Désignation	Item	Part	Description
1	7035	VIS D'ÉTRIER 9/16"	1	7035	YOKE SCREW 9/16"
1a	7074	VOLANT DIN	1a	7074	SCREW (Din)
2	7037	ÉTRIER 9/16"	2	7037	YOKE 9/16"
2a	7075	SIÈGE DIN	2a	7075	SEAT (Din)
2b	7044	JOINT TORIQUE (10,82 x 1,78)	2b	7044	O'RING
2c	7076	JOINT TORIQUE (11,91 x 2,62)	2c	7076	O'RING
3	7100	OBTURATEUR	3	7100	RUBBER PROTECTOR
4	7041	RETENUE FILTRE	4	7041	FILTER RETAINER
5	7077	FILTRE CONIQUE	5	7077	FILTER



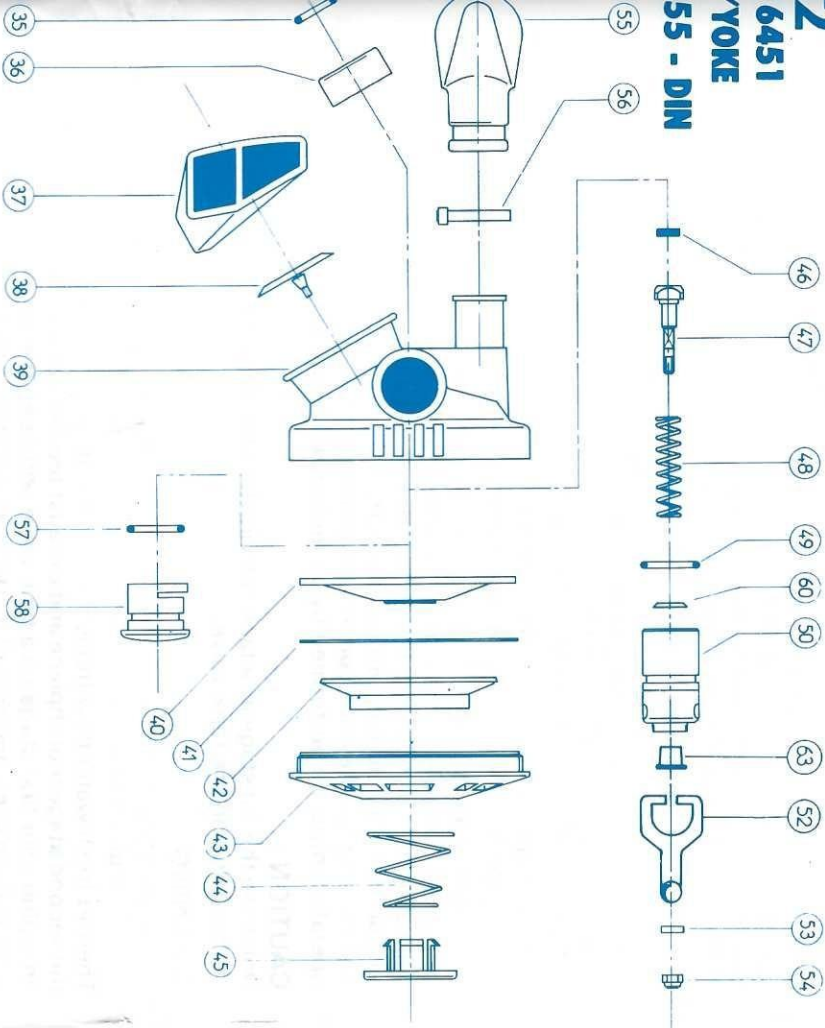
Rep.	Référence	Désignation	Item	Part	Description
6	7056	RETENUE D'ÉTRIER	6	7056	YOKE RETAINER
6a	7078	RACCORD DE VOLANT	6a	7078	CONNECTION
7	7020	JOINT TORIQUE (14 x 1,78)	7	7020	O'RING
8	7057	SELLE	8	7057	SADDLE
9	7900	CORPS	9	7900	BODY
10	7901	PORTE-CLAPET HP	10	7901	HP SEAT RETAINER
12	7060	CLAPET TÉFLON	12	7060	HP SEAT
13	7044	JOINT TORIQUE (14 x 2)	13	7044	O'RING
14	7007	JOINT TORIQUE (6,07 x 1,78)	14	7007	O'RING
15	7902	SIÈGE DE RESSORT	15	7902	SPRING SEAT
16	7903	RESSORT DE PISTON	16	7903	SPRING
17	7063	PISTON	17	7063	PISTON
18	7051	JOINT TORIQUE (25,12 x 1,78)	18	7051	O'RING
19	7064	RETENUE TOURELLE	19	7064	SWIVEL RETAINER
20	7065	RONDELLE NYLON	20	7065	WASHER
21	7079	CAPOT SILICONE	21	7079	CAP
22	7025	JOINT TORIQUE (9,25 x 1,78)	22	7025	O'RING



BEUCHAT

2 6451 YOKE

55 - DIN



Rep.	Référence	Désignation	Item	Part	Description
6	7056	RETENUE D'ETRIER	6	7056	YOKE RETAINER
6a	7078	RACCORD DE VOLANT	6a	7078	CONNECTION
7	7020	JOINT TORIQUE (14 x 1,78)	7	7020	O-RING
8	7057	SELLE	8	7057	SADDLE
9	7900	CORPS	9	7900	BODY
10	7901	PORTE-CLAPET HP	10	7901	HP SEAT RETAINER
12	7060	CLAPET TÉFLON	12	7060	H-P SEAT
13	7044	JOINT TORIQUE (14 x 2)	13	7044	O-RING
14	7007	JOINT TORIQUE (6,07 x 1,78)	14	7007	O-RING
15	7902	SIÈGE DE RESSORT	15	7902	SPRING SEAT
16	7903	RESSORT DE PISTON	16	7903	SPRING
17	7063	PISTON	17	7063	PISTON
18	7051	JOINT TORIQUE (25,12 x 1,78)	18	7051	O-RING
19	7064	RETENUE TOURELLE	19	7064	SWIVEL RETAINER
20	7065	RONDELLE NYLON	20	7065	WASHER
21	7079	CAPOT SILICONE	21	7079	CAP
22	7025	JOINT TORIQUE (9,25 x 1,78)	22	7025	O-RING

Rep.	Référence	Désignation	Item	Part	Description
23	7067	TOURELLE	23	7067	SWIVEL
24	7045	VIS OBT. MP 3/8" (3)	24	7045	L.P. PLUG 3/8" (3)
25	7046	JOINT TORIQUE (3)	25	7046	O-RING (3)
26	7068	VIS OBT. HP 7/16" (2)	26	7068	H.P. PLUG 7/16" (2)
27	7025	JOINT TORIQUE (2)	27	7025	O-RING (2)
30	7046	JOINT TORIQUE (6,75 x 1,78)	30	7046	O-RING
31	16778	TUYAU MP	31	16778	L.P. HOSE
32	6225	JOINT TORIQUE (6,35 x 1,78)	32	6225	O-RING
33	7025	JOINT TORIQUE	33	7025	O-RING
34	8012	SIÈGE DE CLAPET	34	8012	ORIFICE BODY
35	7004	JOINT TORIQUE (12,42 x 1,78)	35	7004	O-RING
36	8010	ENTRETOISE	36	8010	PLASTIC RING
37	8019	DÉFLECTEUR	37	8019	EXHAUST TEE
38	8020	SOUPAPE D'EXPIRATION	38	8020	EXHAUST VALVE
39	8001	BOITIER ARRIÈRE	39	8001	HOUSING
40	8007	MEMBRANE	40	8007	DIAPHRAGM
41	8006	RONDELLE NYLON	41	8006	WASHER
42	8003	DÉFLECTEUR INTÉRIEUR	42	8003	INNER PLATE
43	8002	CAPOT AVANT	43	8002	COVER
44	8004	RESSORT POUSSOIR	44	8004	SPRING
45	8005	POUSSOIR	45	8005	PUSH BUTTON
46	8011	CLAPET	46	8011	VALVE
47	8014	AXE DE CLAPET	47	8014	DEMAND VALVE
48	8013	RESSORT B.P.	48	8013	L.P. SPRING
49	7020	JOINT TORIQUE (14 x 1,78)	49	7020	O-RING
50	8009	CORPS DE DÉTENTE	50	8009	L.P. BODY
52	8017	LEVIER	52	8017	LEVER
53	8015	RONDELLE	53	8015	DEMAND VALVE WASHER
54	8016	ÉCROU-FREIN	54	8016	DEMAND VALVE ADJ. NUT
55	6250	EMBOUCHOIR SILICONE	55	6250	MOUTHPIECE
56	6201	COLLIER	56	6201	MOUTHPIECE STRAP
57	7020	JOINT TORIQUE (14 x 1,78)	57	7020	O-RING
58	8018	OBTURATEUR	58	8018	PLASTIC PLUG
59	7200	PROTECTEUR	59	7200	PROTECTOR
60	8024	RONDELLE B.P.	60	8024	L.P. WASHER
61	7904	CAPOT DE RÉGLAGE	61	7904	ADJUSTABLE PLATE
62	7905	AXE DE RÉGLAGE (3)	62	7905	ADJUSTABLE PIN (3)
63	8025	GUIDE AXE CLAPET	63	8025	DEMAND VALVE GUIDE
	16451	KIT ENTRETIEN 1 ^{er} ETAGE			1 st STAGE REPAIR KIT
	16551	KIT ENTRETIEN 2 ^e ETAGE			2 nd STAGE REPAIR KIT
	7300	CLE CAPOT 1 ^{er} ETAGE			1 st STAGE TOOL
	7301	CLE PORTE CLAPET 1 ^{er} ETAGE			1 st STAGE TOOL
	7303	CLE CAPOT 2 ^e ETAGE			2 nd STAGE TOOL
	7400	TUBE GRAISSE SILICONE			SILICON GREASE