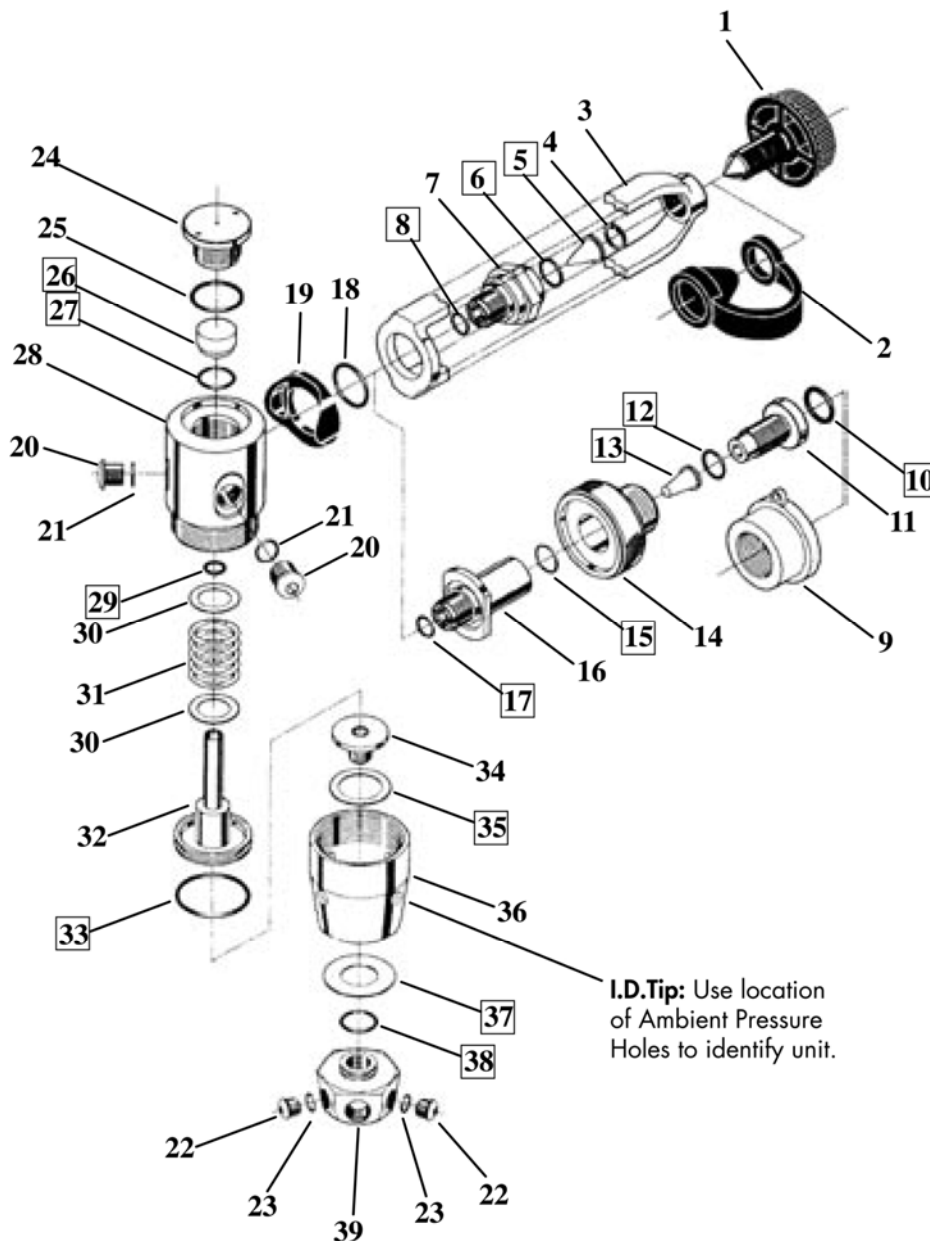


## PRE-1995 BALANCED PISTON FIRST STAGE



## SERVICE PARTS KITS

| CAT. | P/N     | DESCRIPTION                   | DEALER | RETAIL | NOTES |
|------|---------|-------------------------------|--------|--------|-------|
| a    | 40.6116 | KIT, SVC, PRE95 BALPIST, YOKE | 15.00  | 30.00  |       |
| a    | 40.6117 | KIT, SVC, PRE95 BALPIST, DIN  | 15.00  | 30.00  |       |

## DOCUMENTS

| P/N     | DESCRIPTION                    | DEALER | RETAIL | NOTES   |
|---------|--------------------------------|--------|--------|---|
| 12.2212 | PROCEDURE, SVC, PRE-95 BALPIST | 5.00   | NA     | <a href="http://www.OceanicNet.com">www.OceanicNet.com</a> (FREE)             |
| 12.2202 | PROCEDURE, REGULATOR GENERAL   | 5.00   | NA     | <a href="http://www.OceanicNet.com">www.OceanicNet.com</a> (FREE)             |
| 12.2201 | PROCEDURE, ADMINISTRATION      | 5.00   | NA     | <a href="http://www.OceanicNet.com">www.OceanicNet.com</a> (FREE)             |
| 12.2018 | OWNERS GUIDE, REGULATOR        | 5.00   | 10.00  | <a href="http://www.OceanicWorldWide.com">www.OceanicWorldWide.com</a> (FREE) |

## PRE-1995 BALANCED PISTON FIRST STAGE

| DIA. | CAT. | P/N     | DESCRIPTION                    | DEALER | RETAIL | NOTES  |
|------|------|---------|--------------------------------|--------|--------|--|
| 1    | c    | 6563.07 | KNOB, YOKE, BK                 | 8.00   | 16.00  | Hard rubber. Supersedes 6307.07; Compatible with previous designs.   |
| 2    | c    | 6560    | CAP, PROTECTOR YOKE/DIN        | 1.85   | 3.70   | Supersedes all previous non-FDX  |
| 3    | c    | 6562    | YOKE, SATIN                    | 18.00  | 36.00  |  |
| 4    | c    | 3530    | CLIP, RETAINING                | 1.35   | 2.70   |  |
| 5    | a    | 3545    | FILTER, CONICAL                | 2.50   | 5.00   |  |
| 6    | a    | 2.013   | O-RING *ORDER 2.013K (12 PK)*  | 0.15   | 0.30   |  |
| 7    | c    | 3450    | RETAINER, YOKE                 | 8.00   | 16.00  | 6564 will function, different finish.  |
| 8    | a    | 2.011   | O-RING, *ORDER 2.011K (12 PK)* | 0.20   | 0.40   |  |
| 9    | c    | 4547.07 | CAP, PROTECTOR, DIN, BK *NLA*  | 6.00   | 12.00  | Plastic threaded cap. Superseded by 6560.  |
| 10   | a    | 6374    | O-RING, 2.112, DIN             | 3.00   | 6.00   |  |
| 11   | c    | 4544    | RETAINER, DIN FILTER *NLA*     | 12.00  | 24.00  | Pair with 6565 HOUSING/6559 WHEEL (black grip), or 4543 HOUSING/4545 WHEEL (all brass). Threads .8 in. long. |
| 12   | a    | 2.012   | O-RING *ORDER 2.012K (12 PK)*  | 0.15   | 0.30   |  |
| 13   | a    | 4546    | FILTER, CONICAL, DIN           | 3.50   | 7.00   |  |
| 14   | c    | 4545    | WHEEL, DIN COUPLER, BRASS      | 12.00  | 24.00  |  |
| 15   | a    | 2.011   | O-RING, *ORDER 2.011K (12 PK)* | 0.20   | 0.40   |  |
| 16   | c    | 4543    | HOUSING, DIN FILTER *NLA*      | 16.65  | 33.30  | Pair with 4544 RETAINER. Has non-hex flange.   |
| 17   | a    | 2.011   | O-RING, *ORDER 2.011K (12 PK)* | 0.20   | 0.40   |  |
| 18   | b    | 2.115   | O-RING, *ORDER 2.115K (12 PK)* | 0.30   | 0.60   |  |
| 19   | c    | 3454.07 | SADDLE, BK                     | 3.00   | 6.00   |  |
| 20   | c    | 3462    | PLUG, HP 7/16, W/O O-RING      | 1.85   | 3.70   |  |
| 21   | b    | 3.904   | O-RING, *ORDER 3.904K(12 PK)*  | 0.15   | 0.30   | HP Port Plug   |
| 22   | c    | 3463    | PLUG, LP 3/8, W/O O-RING       | 1.85   | 3.70   |  |
| 23   | b    | 3.903   | O-RING *ORDER 3.903K (12 PK)*  | 0.20   | 0.40   | LP Port Plug   |
| 24   | c    | 3452    | PLUG, END, PLATED              | 8.50   | 17.00  |  |
|      | c    | 3452.3  | PLUG, END, SATIN               | 8.50   | 17.00  |  |
| 25   | b    | 2.015   | O-RING, *ORDER 2.015K (12 PK)* | 0.30   | 0.60   |  |
| 26   | a    | 6852    | SEAT, HP, PRE95 BALPIST        | 11.00  | 22.00  | CONCAVE, NO LIP. Supersedes 6509 (6509 may be used until depleted).  |
| 27   | a    | 2.013   | O-RING *ORDER 2.013K (12 PK)*  | 0.15   | 0.30   |  |
| 28   | c    | 3445.3  | BODY, PRE95 BALPIST, SATIN     | 40.00  | 80.00  | Limited quantity.  |
| 29   | a    | 2.010   | O-RING *ORDER 2.010K (12 PK)*  | 0.15   | 0.30   |  |
| 30   | b    | 3547.1  | SHIM, SPRING, BU, 2PSI         | 0.65   | 1.30   |  |
|      | b    | 3547.2  | SHIM, SPRING, BR, 4PSI         | 0.65   | 1.30   |  |
|      | b    | 3547.3  | SHIM, SPRING, PK, 6PSI         | 0.65   | 1.30   |  |
|      | b    | 3547.4  | SHIM, SPRING, YE, 8PSI         | 0.65   | 1.30   |  |
|      | b    | 3546    | SHIM, SPRING, WH, 10PSI        | 0.65   | 1.30   |  |
| 31   | c    | 3464    | SPRING, PISTON, BALANCED       | 6.50   | 13.00  |  |
| 32   | c    | 6162    | PISTON, VALVE, BALANCED        | 25.00  | 50.00  |  |
| 33   | a    | 2.022   | O-RING, *ORDER 2.022K (12 PK)* | 0.30   | 0.60   |  |
| 34   | b    | 3453    | RETAINER, SWIVEL *NLA*         | 6.50   | 13.00  | No longer available.   |
| 35   | a    | 3456    | WASHER, RETAINER               | 1.10   | 2.20   |  |
| 36   | c    | 3446    | CAP, PRE95 BALPIST, PLATED     | 24.00  | 48.00  |  |
|      | c    | 3446.3  | CAP, PRE95 BALPIST, SATIN      | 22.00  | 44.00  |  |
| 37   | a    | 3541    | WASHER, SWIVEL                 | 0.95   | 1.90   |  |
| 38   | a    | 2.014   | O-RING, *ORDER 2.014K (12 PK)* | 0.20   | 0.40   |  |
| 39   | c    | 3447    | SWIVEL, PRE95 BALPIST, PLATED  | 16.00  | 32.00  | Limited availability.  |
|      | c    | 3447.3  | SWIVEL, PRE95 BALPIST, SATIN   | 10.00  | 20.00  |  |
| NS   |      | 40.4031 | ADAPTER, DIN TO YOKE           | DPL    | DPL    | Adapts DIN configuration to standard valve.  |