

Airsourse 3 w/QD Fitting 2010-Present

Airsourse 3 w/Cut-Off Valve **2008-2011 Discontinued**

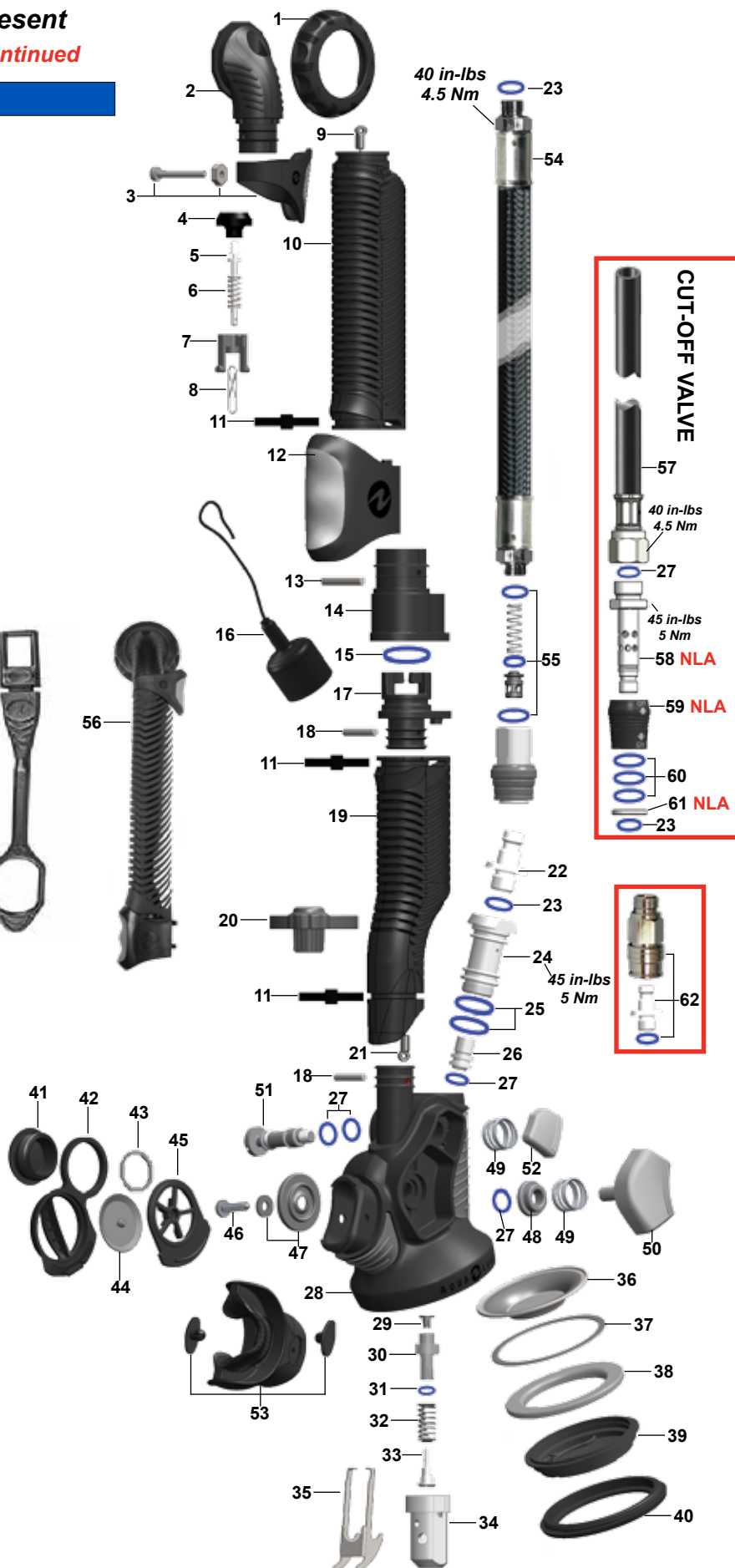
Key #	Part #	Description
.....	900021	Overhaul Parts Kit, Airsource 3
.....	42639	O-ring Kit, Airsource QD Hose

1.....	15763	Collar
2.....	15161	Elbow
3.....	15281	Clip, Nut & Screw, Charcoal
4.....	778559	Poppet, Dump Valve
5.....	15164	Stem, Poppet
6.....	15215	Spring, Pull Dump, S/S
7.....	15162	Guide, Poppet
8.....	15178	Hook, Inflator Cable
9.....	15163	Cable, Upper 7.6"
10.....	15170	Hose, Upper
11.....	15719	Clamp
12.....	15257	Trim-Grip Ring, Grey
13.....	15172	Pin
14.....	15173	Trim-Grip, Top
15.....	820018P	O-ring (20 pk)
16.....	15226	Dust Cap, for Trim Grip
17.....	15175	Trim Grip, Bottom
18.....	15177	Pin
19.....	15171	Hose, Lower
20.....	15029	QD Fitting Cover
21.....	15176	Cable, Lower, 6.4"
22.....	15203	QD Fitting
23.....	820011P	O-ring (25 pk)
24.....	15196	Inlet Fitting
25.....	820015P	O-ring (10 pk)
26.....	15220	Crown
27.....	820010P	O-ring (25 pk)
28.....	15245	Body
29.....	15221	MP Seat
30.....	15222	Shuttle Valve
31.....	15234	O-ring
32.....	15223	Spring
33.....	15224	Spring Carrier
34.....	15201	Valve Spindle
35.....	15202	Lever
36.....	15225	Diaphragm
37.....	15227	Washer
38.....	15228	Retainer, Diaphragm
39.....	15205	Cover, Purge
40.....	15247	Retainer, Purge
41.....	15244	Cap
42.....	15246	Cover, Exhaust Valve
43.....	15189	Gasket
44.....	15132	Valve, Exhaust, Grey
45.....	15265	Support, Exhaust Valve
46.....	15204	Screw
47.....	15255	Oral Seal Kit
48.....	15185	Plate
49.....	15187	Spring
50.....	15264	OI Button, Grey
51.....	15188	Push rod
52.....	15263	PI Button, Grey
53.....	15239	Mouthpiece w/ Pins
54.....	25460	QD Hose, Braided, 3/8" x 27"
55.....	42639	O-ring Kit, A/S QD Hose
56.....	15259	Upper Hose Assembly (1-14)

AIRSOURCE W/CUT-OFF VALVE

57.....	15191	Hose, MP 3/8" x 25"
58.....	NLA	Fitting, Cut-Off Valve
59.....	NLA	Barrel, Cut-Off Valve
60.....	820312P	O-ring (10 pk)
61.....	NLA	Washer
62.....	15140	AirsourseQD Conversion Kit

Anchorline Retainer
p/n 15285



Part numbers in **BOLD ITALICS** indicate standard overhaul replacement part.