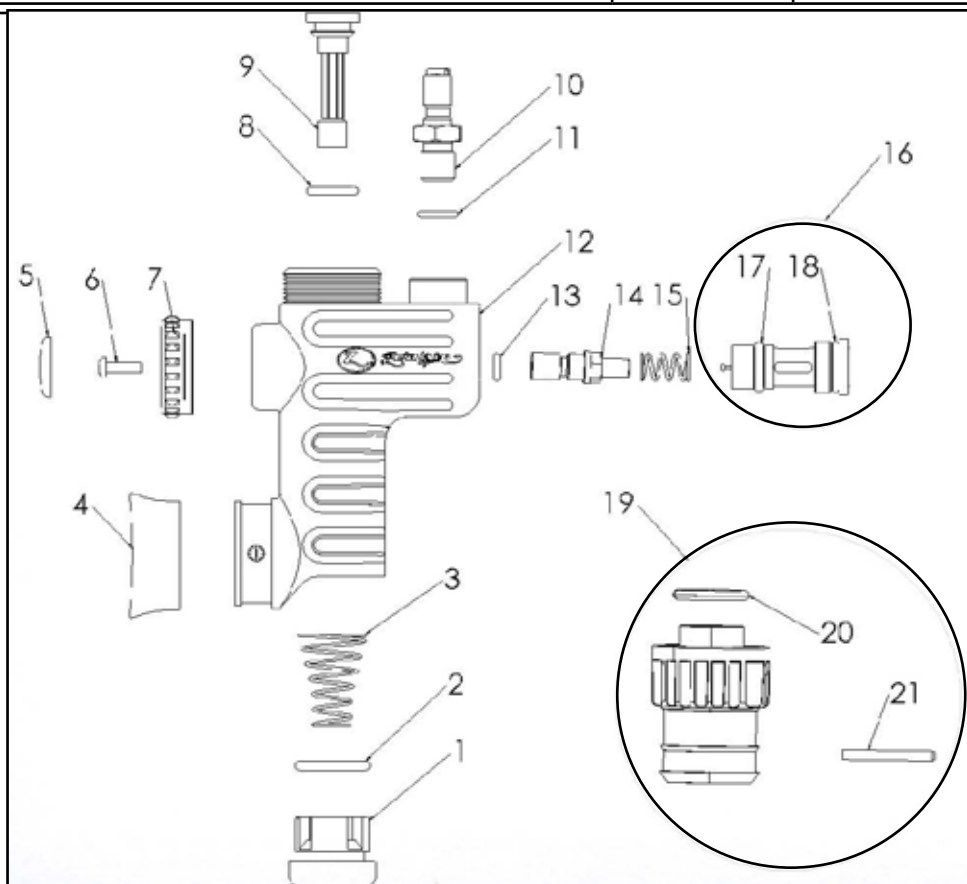


		Bx Power Inflator p/n 112-1001BX		
	<b>Part #</b>	<b>Description</b>		
1	112-1003	Dump Button		
2*	160-0114-N7	O-Ring		
3	115-4019	Spring		
4	112-1008	Mouthpiece		
5*	175-1630	Label Sticker		
6	115-4018	Screw		
7	112-1004	Button Inflator		
8*	160-0110-N7	O-ring for Deflate Shaft		
9	112-1007	Deflate shaft		
10	115-4016	Quick Disconnect Male Fitting		
11*	160-0903-N7	O-ring for Quick Disconnect Fitting		
12	112-1002	Body		
13*	160-0008-N7	O-ring for Inflate Shaft		
14	112-1005	Inflate Shaft		
15	115-4023	Straight Coil Spring		
16*	112-1010	Valve Insert Assembly (includes Schrader valve and o-rings)		
17	160-0109-N7	O-ring (thicker o-ring on valve insert)		
18	160-0013-N7	O-ring (thinner o-ring on valve insert)		
19	342-7234-AA	Bx Coupler		
20*	160-0114-N7	O-ring for Bx coupler (comes installed on Bx coupler)		
21	160-6001	Pin		
22*	111-4001	Plastic Tie Wrap (not shown)		

\* An asterisk next to the Item Number means that part is included in the Standard Service Kit. The Service Kit Part # for the Zeagle Power Inflator is 145-1000.



[Return to Table of Contents](#)

The parts listed here are for current model products unless otherwise specified. Contact your sales rep or Customer Service if you have any questions.

