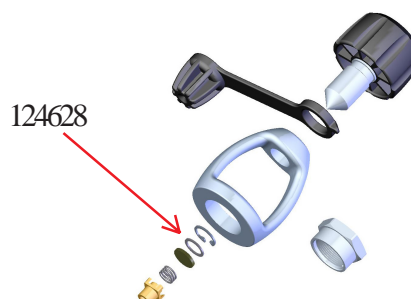


Aqua Lung America **TECHNICAL BULLETIN**

Nov. 1, 2005
No. 15

SUBJECT: New Filter Washer for Titan and Conshelf First Stages

In late 2001, Aqua Lung made a change to the Titan / Conshelf filter washer which is located between the circlip and the filter. The washer went from a nylon model, p/n 845095 to a brass model, p/n 124627. The change was one of several which allowed the Titan / Conshelf to be used with EAN mixtures up to 40% O₂. While the brass washer, p/n 124627, functions fine, it does prohibit the technician from visually inspecting the filter without removing it. Visually inspecting the filter is an important step of the *Eight Point Inspection* which occurs every other year in the life of an Aqua Lung regulator.



Earlier this year, Aqua Lung began using a brass filter washer, p/n 124628, that has a larger inner diameter. This will allow visual inspection of the filter without the need for disassembly. As regulators come into your stores for service, we would like you to upgrade the filter washer to the new style.

To assist you in this change out, we will be adding the new filter washer, p/n 124628, to the Titan / Conshelf service kit, p/n 900001, for a period of two years. After that time, no washers will be added to the kits as this new model can be reused in most cases.

Should you have any questions or need assistance, please do not hesitate to call 1-877-253-DIVE (3483).