

# SPARE PARTS LIST

**DIVATOR MK II**



© 2005 Interspiro AB, Sweden. This publication contains or refers to proprietary information which is protected by copyright. All rights are reserved. Interspiro®, Divator Lite® and Spiromatic® are registered trademarks belonging to Interspiro.

This publication may not be copied, photocopied, reproduced, translated, or converted to any electronic or machine-readable form in whole or in part without prior written approval from Interspiro.

# READ BEFORE USE

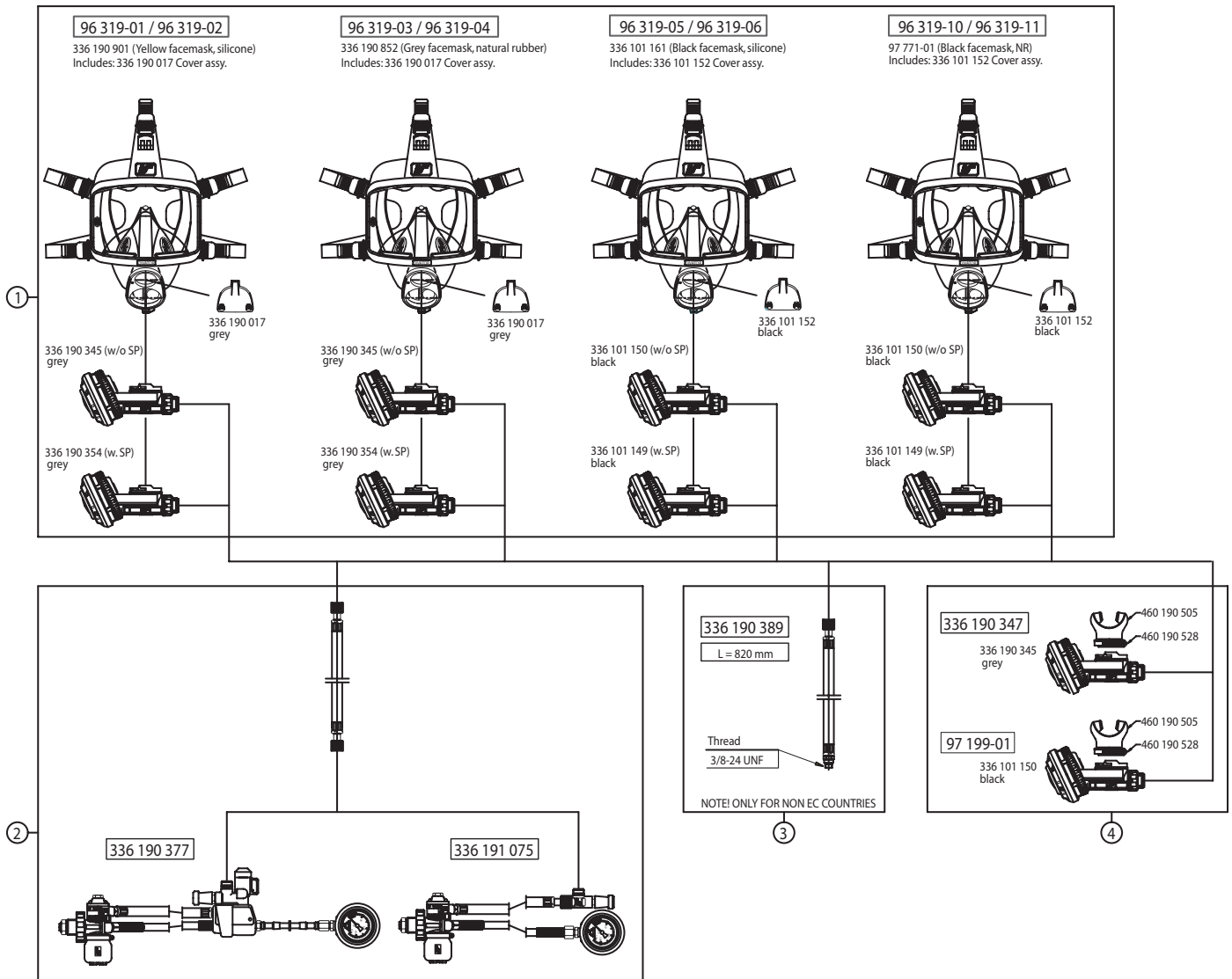
1. Only holders of a valid **INTERSPIRO SERVICE CERTIFICATE** may carry out service and repairs on **INTERSPIRO** breathing equipment. Unauthorized service may result in malfunction and users relying thereon could sustain severe respiratory injury or death.
2. When using the spare part list always refer to the equipments **SERVICE MANUAL** in regard to procedure and handling of the spare parts assembly and function.
3. Changes to this document – necessitated by typographical errors, inaccuracies of current information or improvements and changes of equipment – may be done at any time and without prior notice.
4. Some items include a character for identification purposes, ex. 4a and 4b. For some of these items a part number is not available. The identification character used for these items is intended to serve as a reference when following instructions in a service manual. They cannot be ordered as separate items.
5. The service kits contain replacement items used for preventive maintenance. The service kit description “1x set of items in #6” means that one single item from part number 6 is included – even if part number 6 is a 10 pack. The service kit is thus intended for service of a single unit. If the note says “10 pack”, the service kit is intended for servicing 10 units.
6. Always refer to **WWW.INTERSPIRO.COM** for product or document updates and for service bulletines.



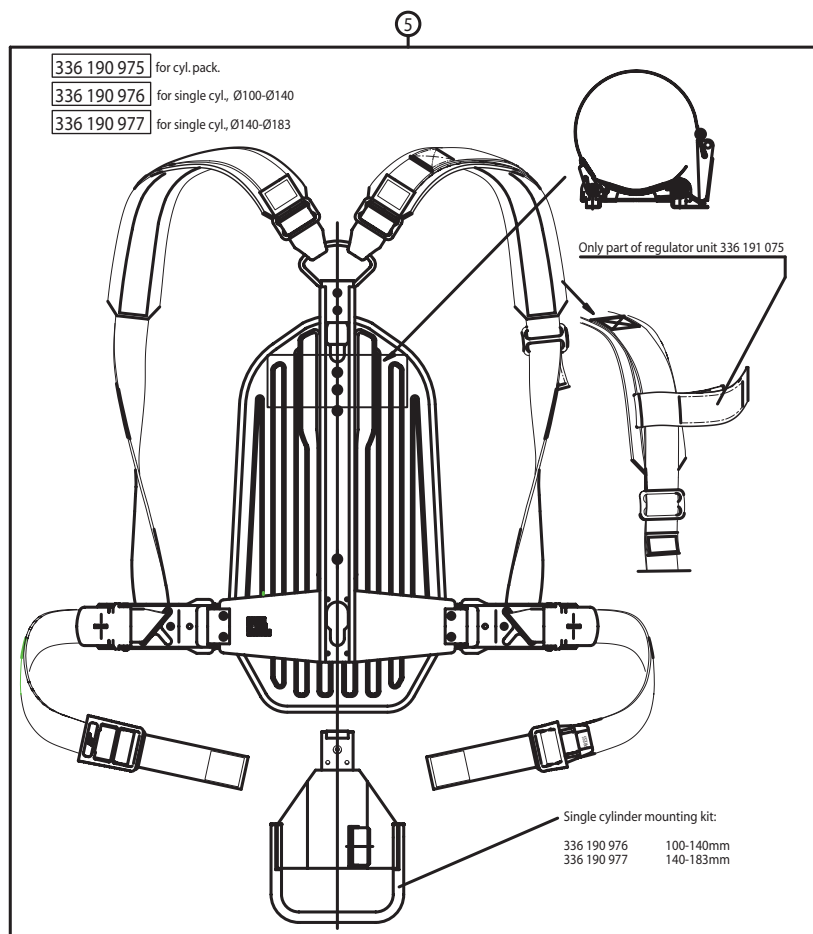
# CONTENTS

SYSTEM OVERVIEW, PART 1 .....	6
SYSTEM OVERVIEW, PART 2 .....	7
SERVICE AND TESTING SCHEDULE .....	8
MKII SERVICE KITS .....	9
FACE MASK GREY NR .....	10
FACE MASK BLACK NR .....	11
FACE MASK YELLOW SILICONE .....	12
FACE MASK BLACK SILICONE .....	13
BREATHING VALVE WITHOUT SAFETY PRESSURE BLACK .....	14
DIAPHRAGM ATTACHMENT, W/O SP, BLACK .....	15
BREATHING VALVE WITH SAFETY PRESSURE BLACK .....	16
DIAPHRAGM ATTACHMENT, W. SP, BLACK .....	17
BREATHING VALVE WITHOUT SAFETY PRESSURE GREY .....	18
DIAPHRAGM ATTACHMENT, W/O SP, GREY .....	19
BREATHING VALVE WITH SAFETY PRESSURE GREY .....	20
DIAPHRAGM ATTACHMENT, W. SP, GREY .....	21
REGULATOR WITH WARNING .....	22
WARNING DEVICE .....	23
REGULATOR .....	24
REGULATOR WITHOUT WARNING .....	25
HARNESS .....	26
HARNESS, SINGLE CYLINDER .....	27
CYLINDER, SINGLE 316 STEEL .....	28
CYLINDER, PACK 324 STEEL .....	29
CYLINDER, PACK 326 STEEL.....	30
CYLINDER, PACK 326.7 COMPOSITE .....	31
CYLINDER VALVE, COMPOSITE .....	32
WEIGHT, COMPOSITE .....	33

# SYSTEM OVERVIEW, PART 1



# SYSTEM OVERVIEW, PART 2



	Part No.	Breathing valve	Facemask	Cover
①	96 319-01 Mask with breathing valve	336 190 345 Grey, (w/o SP)	336 190 901 Yellow, silicone	336 190 017 Grey
	96 319-02 Mask with breathing valve	336 190 354 Grey, (w. SP)	336 190 901 Yellow, silicone	336 190 017 Grey
	96 319-03 Mask with breathing valve	336 190 345 Grey, (w/o SP)	336 190 852 Grey, natural rubber	336 190 017 Grey
	96 319-04 Mask with breathing valve	336 190 354 Grey, (w. SP)	336 190 852 Grey, natural rubber	336 190 017 Grey
	96 319-05 Mask with breathing valve	336 101 150 Black, (w/o SP)	336 101 161 Black, silicone	336 101 152 Black
	96 319-06 Mask with breathing valve	336 101 149 Black, (w. SP)	336 101 161 Black, silicone	336 101 152 Black
	96 319-10 Mask with breathing valve	336 101 150 Black, (w/o SP)	97 771-01 Black, NR	336 101 152 Black
	96 319-11 Mask with breathing valve	336 101 149 Black, (w. SP)	97 771-01 Black, NR	336 101 152 Black

	Part No.	Regulator unit	Valve hose
②	336 190 377 Reg. unit with warning device, complete	336 190 980	336 190 339
	336 191 075 Regulator unit, complete	336 190 981	336 190 339
	336 190 980 Reg. unit with warning device		
	336 190 981 Reg. unit without warning device		

③	336 190 389 Regulator hose assy.	NOTE! ONLY FOR NON EC COUNTRIES.
---	----------------------------------	----------------------------------

	Part No.	Breathing valve	Mouth piece	Hose clamp
④	336 190 347 Breathing valve w. mouth piece	336 190 345 Grey	460 190 505	460 190 528
	97 199 Breathing valve w. mouth piece	336 101 150 Black	460 190 505	460 190 528

⑤	336 190 975 Harness, for cylinder pack
	336 190 976 Harness, for single cylinder Ø100-Ø140, see dwg 55 018
	336 190 977 Harness, for single cylinder Ø140-Ø183, see dwg 55 018

# SERVICE AND TESTING SCHEDULE

**This schedule is only valid for diving equipment.** The schedule shows the minimum requirements for service and testing as recommended by Interspiro. Local requirements may differ due to environmental conditions and frequency of use. To ensure trouble free operation it is advisable to replace parts included in the service kit in accordance with the schedule below.

#	APPARATUS/COMPONENT	BEFORE USE	AFTER USE	EVERY YEAR	EVERY 6 <sup>TH</sup> YEAR
<b>1</b>	<b>Face Piece</b>	<b>S</b>	<b>D</b>		
1.1	Full Face Mask			<b>V</b> *	<b>V</b> *
1.2	Mouth Piece			<b>V</b>	<b>V</b>
1.3	Breathing Valve			<b>F</b> *	<b>F</b> *
<b>2</b>	<b>Regulator unit</b>		<b>C</b>		
2.1	Regulator	<b>S</b>		<b>F</b> *	<b>F</b> *
2.2	Warning Device	<b>S</b>		<b>F</b>	<b>F</b> *
2.3	High Pressure Hoses			<b>V</b>	<b>V</b>
2.4	Low Pressure Hoses			<b>V</b>	<b>V</b> ***
<b>3</b>	<b>Harness</b>	<b>S</b>	<b>C</b>	<b>V</b>	
<b>4</b>	<b>Cylinder/Cylinder pack</b>	<b>S</b>	<b>C</b>	<b>V</b>	
4.1	Cylinder Valve				<b>F</b> **
4.2	Cylinder			Periodic inspection to be performed in accordance with national regulations	

**V** = **Visual inspection** (renew if necessary)

**C** = **Cleaning**

**D** = **Cleaning and disinfection**

**S** = **Short user test**

**F** = **Full inspection and performance tests**

\* Parts included in service kits (or service parts) shall be replaced during service.

\*\* Service is advised to be made in the same periodic interval as cylinders, however it must be done at least every 5 years.

\*\*\* Low pressure hoses shall be replaced. No service kit available.

# MKII SERVICE KITS

All service kits and service parts listed below shall be replaced during service.

## **1.1 FULL FACE MASK - EVERY YEAR**

A 460 190 900	Service kit for 1 apparatus	See page 10-13
B 460 190 901	Service kit for 10 apparatus	See page 10-13

## **1.3 BREATHING VALVE - EVERY YEAR**

A 336 190 226	Service part for 10 apparatus	See page 14, 16 , 18 & 20
---------------	-------------------------------	---------------------------

## **1.3 BREATHING VALVE - EVERY 6<sup>TH</sup> YEARS**

A 460 190 902	Service kit for 1 apparatus	See page 15 & 19
B 460 190 903	Service kit for 10 apparatus	See page 15 & 19
A 460 190 904	Service kit for 1 apparatus	See page 17 & 21
B 460 190 905	Service kit for 10 apparatus	See page 17 & 21

## **2.1 REGULATOR - EVERY YEAR**

A 346 190 643	Service part for 10 apparatus	See page 24
B 336 190 272	Service part for 10 apparatus	See page 24
C 346 190 644	Service part for 100 apparatus	See page 24
D 460 190 237	Service part for 100 apparatus	See page 24

## **2.1 REGULATOR - EVERY 6<sup>TH</sup> YEARS**

A 460 190 906	Service kit for 1 swivel	See page 22
B 460 190 907	Service kit for 10 swivels	See page 22
A 460 190 910	Service kit for 1 apparatus	See page 24
B 460 190 911	Service kit for 10 apparatus	See page 24
A 460 190 912	Service kit for 1 apparatus	See page 25
B 460 190 913	Service kit for 10 apparatus	See page 25

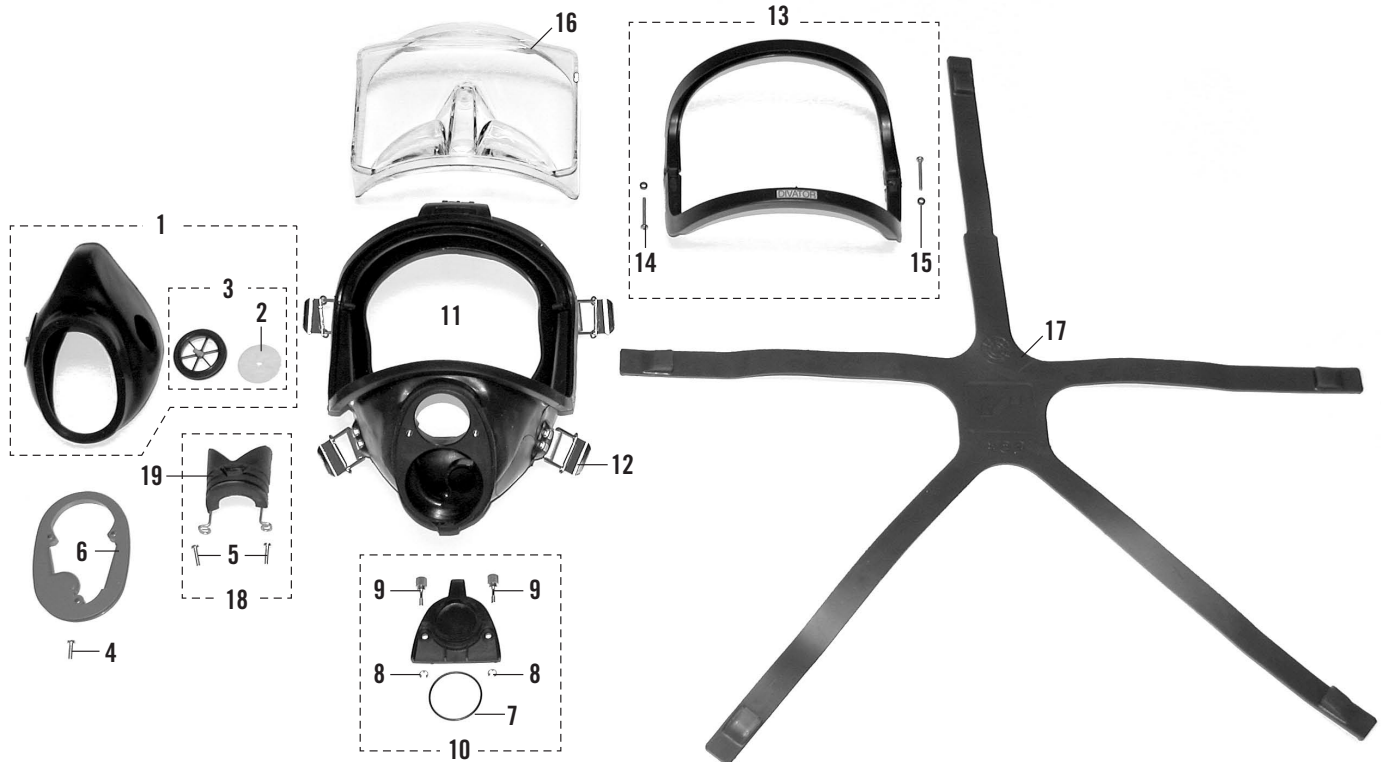
## **2.2 WARNING DEVICE - EVERY 6<sup>TH</sup> YEARS**

A 460 190 908	Service kit for 1 apparatus	See page 23
B 460 190 909	Service kit for 10 apparatus	See page 23

## **4.1 CYLINDER VALVE - EVERY 5<sup>TH</sup> YEARS\*\* (See page 8)**

A 460 190 914	Service kit for 1 apparatus	See page 32
B 460 190 915	Service kit for 10 apparatus	See page 32

# FACE MASK GREY NR

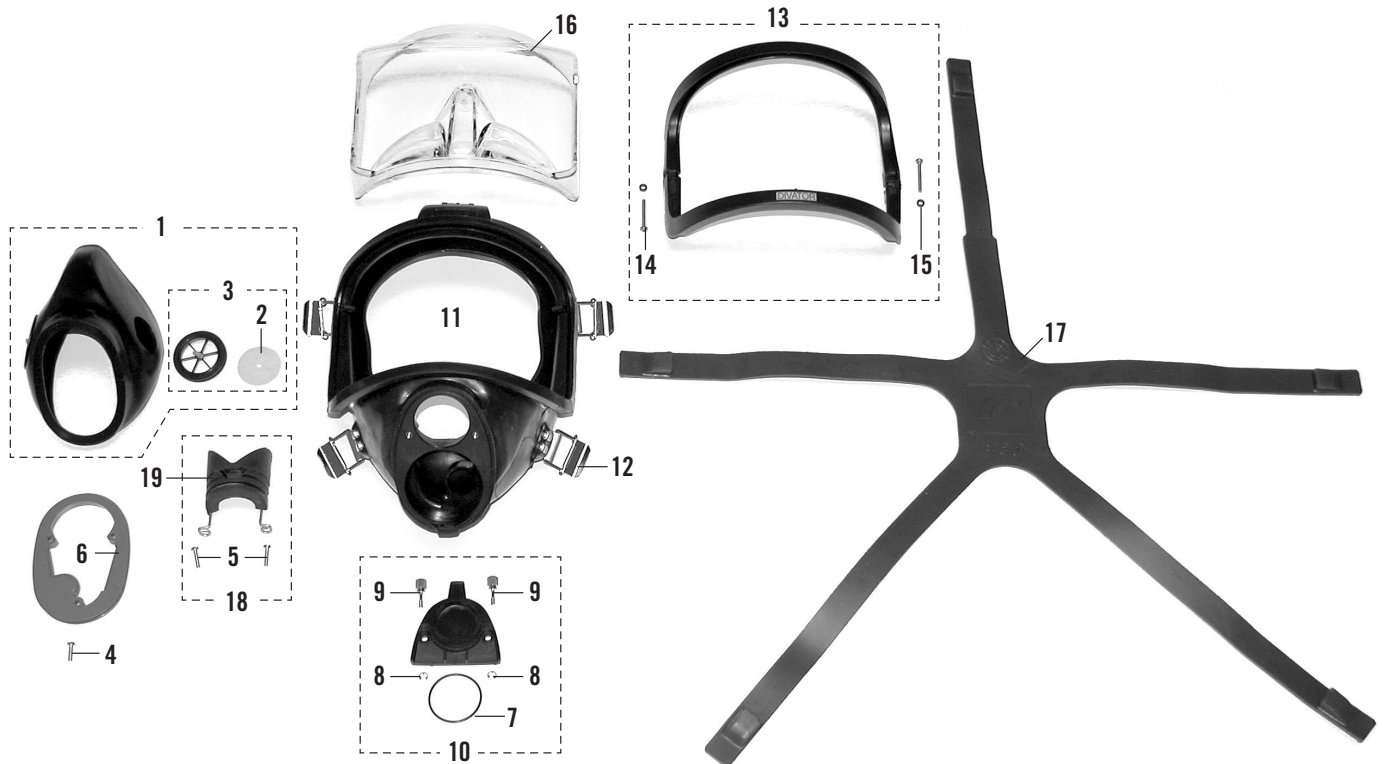


#	SPARE PART	ORDER #	NOTES
•	Divator Mask, grey NR	336 190 852	
1	Inner mask assy. grey NR	460 190 543	Incl. #2-3
2	Non-return valve disc	336 190 264	10-pack
3	Valve seat assy. grey	460 190 550	2 pack. Incl. #2
4	Screw	336 190 246	10-pack
5	Screw	336 190 489	10-pack
6	Retaining plate	460 190 398	
7	O-ring	336 190 222	5-pack
8	Circlip	336 190 255	10-pack
9	Screw	460 190 300	10-pack
10	Cover assembly, grey	336 190 017	Incl. #7-9
11	Mask body assy. grey NR	460 190 545	Incl. #12
12	Buckle assy.	460 190 541	5-pack
13	Visor frame kit MK II, grey	460 190 548	Incl. #14-15
14	Screw	336 190 409	10-pack

#	SPARE PART	ORDER #	NOTES
15	Spacer	336 190 554	10-pack
16	Visor MK II	336 190 850	
17	Head harness, grey NR	460 190 375	
18	Pressure equalizer	336 190 373	Incl. #5&19
19	Pressure equalizing pad	460 190 513	

#	SERVICE KIT	PART NR.	NOTES
A	Service kit for 1 apparatus Divator MKII face mask	460 190 900	
-	1 singular item of each of #7		
-	2 singular items of each of #2		
B	Service kit for 10 apparatus Divator MKII face mask	460 190 901	
-	10 singular item of each of #7		
-	20 singular items of each of #2		

# FACE MASK BLACK NR

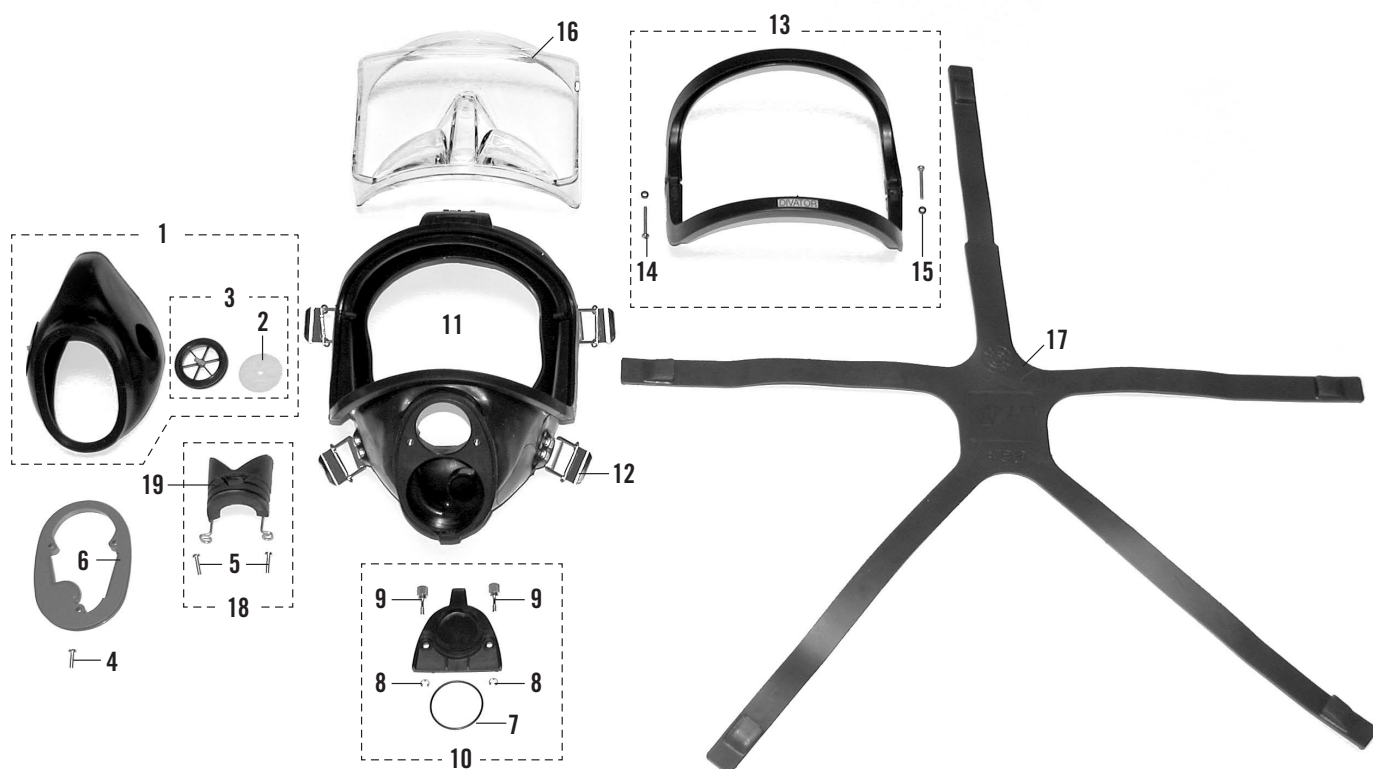


#	SPARE PART	ORDER #	NOTES
•	Divator Mask, black NR	97 771-01	
1	Inner mask assy. black silicone	460 190 542	Incl. #2-3
2	Non-return valve disc	336 190 264	10-pack
3	Valve seat assy. black	460 190 549	2 pack. Incl. #2
4	Screw	336 190 246	10-pack
5	Screw	336 190 489	10-pack
6	Retaining plate	460 190 398	
7	O-ring	336 190 222	5-pack
8	Circlip	336 190 255	10-pack
9	Screw	460 190 300	10-pack
10	Cover assembly, black	460 190 555	Incl. #7-9
11	Mask body assy. black NR	97 820-51	Incl. #12
12	Buckle assy.	460 190 541	5-pack
13	Visor frame kit MK II, black	460 190 547	Incl. #14-15
14	Screw	336 190 409	10-pack

#	SPARE PART	ORDER #	NOTES
15	Spacer	336 190 554	10-pack
16	Visor MK II	336 190 850	
17	Head harness, black NR	460 190 457	
18	Pressure equalizer	336 190 373	Incl. #5&19
19	Pressure equalizing pad	460 190 513	

#	SERVICE KIT	PART NR.	NOTES
A	Service kit for 1 apparatus Divator MKII face mask	460 190 900	
-	1 singular item of each of #7		
-	2 singular items of each of #2		
B	Service kit for 10 apparatus Divator MKII face mask	460 190 901	
-	10 singular item of each of #7		
-	20 singular items of each of #2		

# FACE MASK YELLOW SILICONE

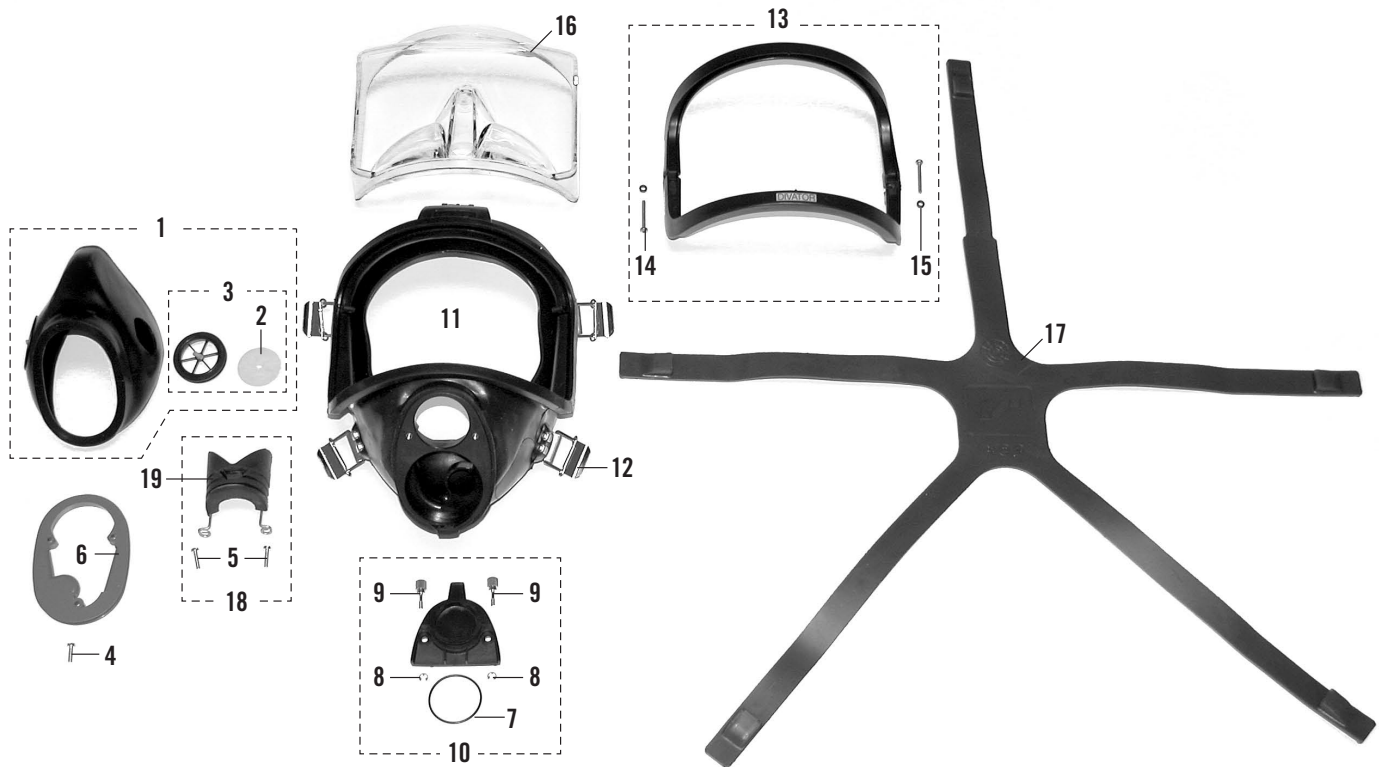


#	SPARE PART	ORDER #	NOTES
	• Divator Mask, yellow silicone	336 190 901	
1	Inner mask assy. yellow silicone	336 190 909	Incl. #2-3
2	Non-return valve disc	336 190 264	10-pack
3	Valve seat assy. grey	460 190 550	2 pack. Incl. #2
4	Screw	336 190 246	10-pack
5	Screw	336 190 489	10-pack
6	Retaining plate	460 190 398	
7	O-ring	336 190 222	5-pack
8	Circlip	336 190 255	10-pack
9	Screw	460 190 300	10-pack
10	Cover assembly, grey	336 190 017	Incl. #7-9
11	Mask body assy. yellow silicone	336 190 908	Incl. #12
12	Buckle assy.	460 190 541	5-pack
13	Visor frame kit MK II, grey	460 190 548	Incl. #14-15
14	Screw	336 190 409	10-pack

#	SPARE PART	ORDER #	NOTES
15	Spacer	336 190 554	10-pack
16	Visor MK II	336 190 850	
17	Head harness, grey NR	460 190 375	
18	Pressure equalizer	336 190 373	Incl. #5&19
19	Pressure equalizing pad	460 190 513	

#	SERVICE KIT	PART NR.	NOTES
A	Service kit for 1 apparatus Divator MKII face mask	460 190 900	
-	1 singular item of each of #7		
-	2 singular items of each of #2		
B	Service kit for 10 apparatus Divator MKII face mask	460 190 901	
-	10 singular item of each of #7		
-	20 singular items of each of #2		

# FACE MASK BLACK SILICONE

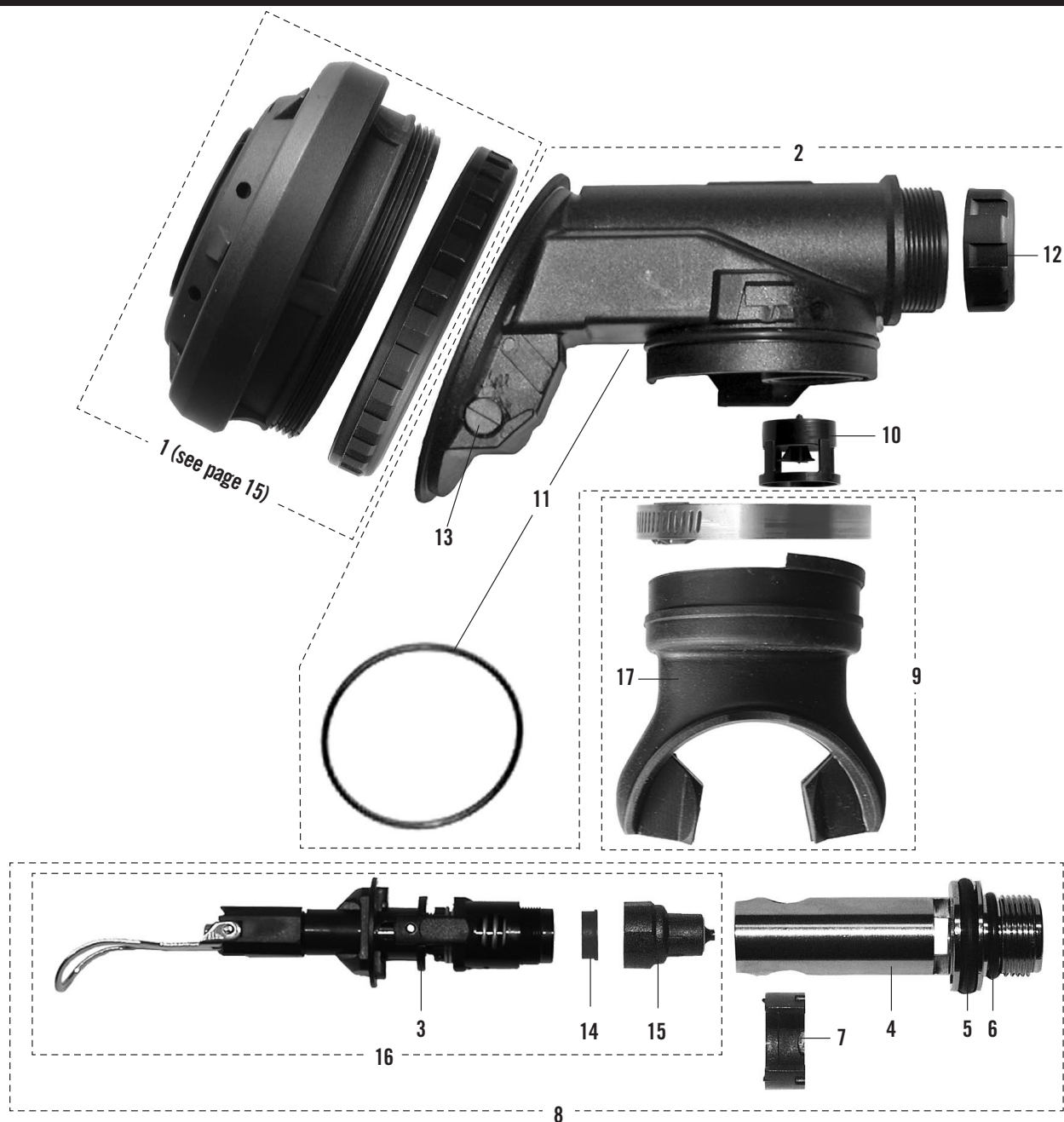


#	SPARE PART	ORDER #	NOTES
•	Divator Mask, black silicone	336 101 161	
1	Inner mask assy. black silicone	460 190 542	Incl. #2-3
2	Non-return valve disc	336 190 264	10-pack
3	Valve seat assy. black	460 190 549	2 pack. Incl. #2
4	Screw	336 190 246	10-pack
5	Screw	336 190 489	10-pack
6	Retaining plate	460 190 398	
7	O-ring	336 190 222	5-pack
8	Circlip	336 190 255	10-pack
9	Screw	460 190 300	10-pack
10	Cover assembly, black	460 190 555	Incl. #7-9
11	Mask body assy. black silicone	460 190 544	Incl. #12
12	Buckle assy.	460 190 541	5-pack
13	Visor frame kit MK II, black	460 190 547	Incl. #14-15
14	Screw	336 190 409	10-pack

#	SPARE PART	ORDER #	NOTES
15	Spacer	336 190 554	10-pack
16	Visor MK II	336 190 850	
17	Head harness, black NR/CR	460 190 520	
18	Pressure equalizer	336 190 373	Incl. #5&19
19	Pressure equalizing pad	460 190 513	

#	SERVICE KIT	PART NR.	NOTES
A	Service kit for 1 apparatus Divator MKII face mask	460 190 900	
-	1 singular item of each of #7		
-	2 singular items of each of #2		
B	Service kit for 10 apparatus Divator MKII face mask	460 190 901	
-	10 singular item of each of #7		
-	20 singular items of each of #2		

# BREATHING VALVE WITHOUT SAFETY PRESSURE BLACK

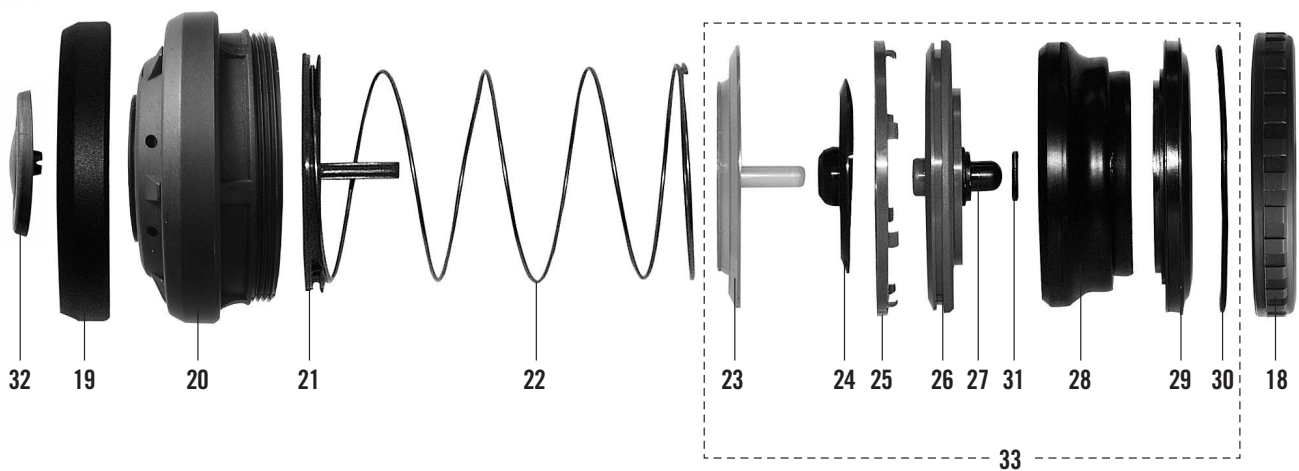


#	SPARE PART	ORDER #	NOTES
•	Breathing valve (w/o SP)	336 101 150	for face mask
•	Breathing valve (w/o SP)	97 199-01	with mouth piece
1	Diaphragm attachment	336 101 155	
2	Valve housing MK II, black w/o SP	336 101 156	Incl. #10-13
3	Counter pressure assy. w/o SP	460 190 588	
4	Connection nipple	460 190 396	Incl. #5, 6
5	O-ring	336 190 227	10-pack
6	O-ring	336 190 228	10-pack
7	Retaining ring	346 190 198	10-pack
8	Valve insert assy. w/o SP	460 190 558	Incl. #3-7, 14-15
9	Mouthpiece assy.	336 190 353	Incl. #17
10	Non-return valve assy.	460 190 559	
11	O-ring, only used with face mask	336 190 226	10-pack

#	SPARE PART	ORDER #	NOTES
12	Nut, black	460 190 516	5-pack
13	Sealing plug	460 190 511	5-pack
14	Balancing diaphragm	460 190 409	5-pack
15	Valve cone assy.	336 190 064	
16	Valve insert sub assy. w/o SP	97 083-51	Incl. #3, 14-15
17	Mouth piece	460 190 505	

#	SERVICE PARTS	PART NR.	NOTES
A	Service part for 10 apparatus	336 190 226	
-	10 singular items of each of #11		

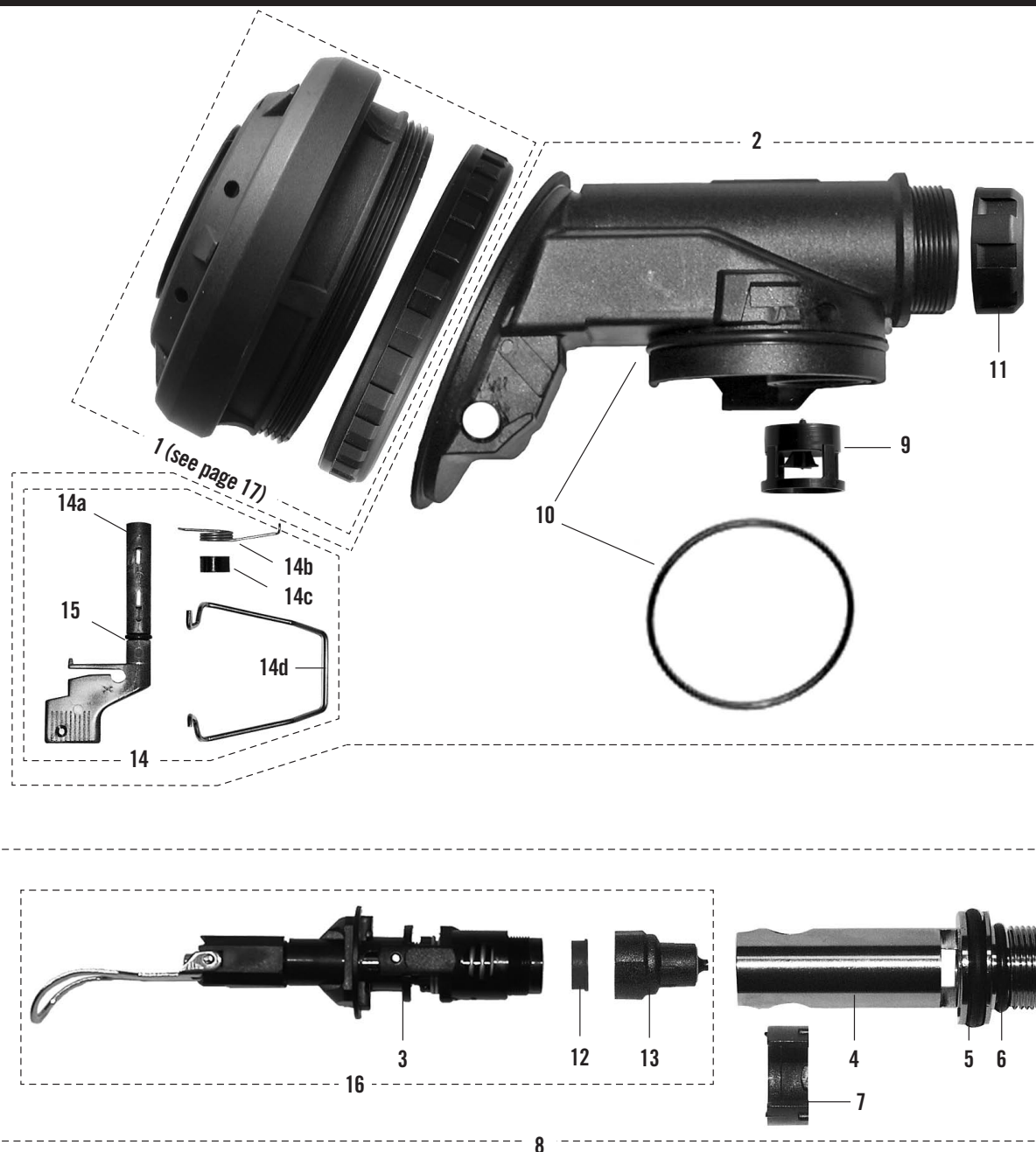
# DIAPHRAGM ATTACHMENT, W/O SP, BLACK



#	SPARE PART	ORDER #	NOTES
18	Locking ring, black	460 190 515	5-pack
19	Shield ring	460 190 410	5-pack
20	Cover with purge button, black	460 190 518	
21	Guide disc	460 190 412	
22	Sealing spring	460 190 500	5-pack
23	Sealing disc	460 190 393	5-pack
24	Exhalation diaphragm	346 190 196	5-pack
25	Securing ring	460 190 413	10-pack
26	Diaphragm ring	460 190 394	
27	Guide pin	346 190 194	10-pack
28	Diaphragm	460 190 140	
29	Diaphragm holder	460 190 395	
30	O-ring	336 190 224	5-pack
31	Washer	336 190 638	10-pack
32	Purge button	336 190 487	5-pack
33	Diaphragm assembly	336 190 360	Incl. #23-31

#	SERVICE KIT	PART NR.
A	Service kit for 1 apparatus Breathing valve w/o safety pressure – 1 singular item of each of #5/6/10/11/16/33	460 190 902
B	Service kit for 10 apparatus Breathing valve w/o safety pressure – 10 singular item of each of #5/6/10/11/16/33	460 190 903

# BREATHING VALVE WITH SAFETY PRESSURE BLACK

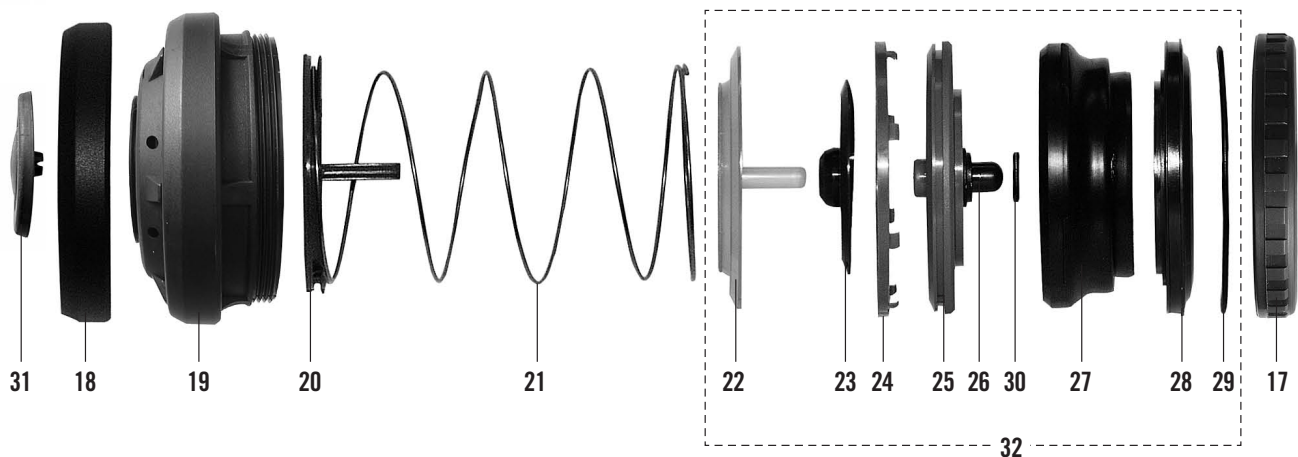


#	SPARE PART	ORDER #	NOTES
•	Breathing valve (w. SP)	336 101 149	
1	Diaphragm attachment	460 190 552	
2	Valve housing MK II, black w. SP	336 101 158	Incl. #9-11, 14-15
3	Counter pressure assy. w. SP	460 190 589	
4	Connection nipple	460 190 396	Incl. #5, 6
5	O-ring	336 190 227	10-pack
6	O-ring	336 190 228	10-pack
7	Retaining ring	346 190 198	10-pack
8	Valve insert assy. w. SP	336 190 357	Incl. #3-7, 12-13
9	Non-return valve assy.	460 190 559	
10	O-ring, only together with face mask	336 190 226	10-pack

#	SPARE PART	ORDER #	NOTES
11	Nut, black	460 190 516	5-pack
12	Balancing diaphragm	460 190 409	5-pack
13	Valve cone assy.	336 190 064	
14	Lever assy.	336 190 142	Incl. #15
15	O-ring	336 190 225	10-pack
16	Valve insert sub assy. w. SP	97 028-51	Incl. #3, 12-13

#	SERVICE PARTS	PART NR.	NOTES
A	Service part for 10 apparatus	336 190 226	
-	10 singular items of each of #10		

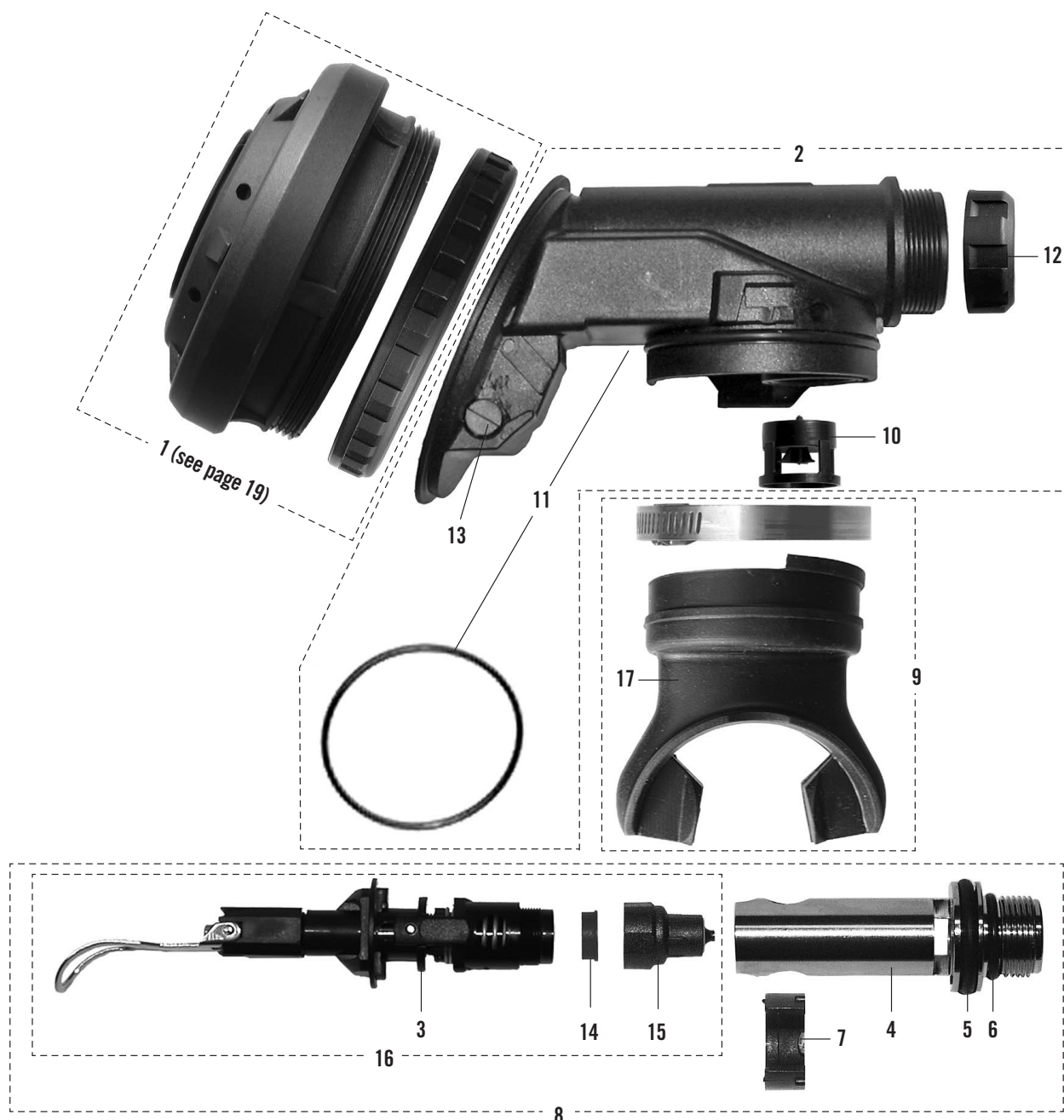
# DIAPHRAGM ATTACHMENT, W. SP, BLACK



#	SPARE PART	ORDER #	NOTES
17	Locking ring, black	460 190 515	5-pack
18	Shield ring	460 190 410	5-pack
19	Cover with purge button, black	460 190 518	
20	Guide disc	460 190 412	
21	Sealing spring	460 190 508	5-pack
22	Sealing disc	460 190 393	5-pack
23	Exhalation diaphragm	346 190 196	5-pack
24	Securing ring	460 190 413	10-pack
25	Diaphragm ring	460 190 394	
26	Guide pin	346 190 194	10-pack
27	Diaphragm	460 190 140	
28	Diaphragm holder	460 190 395	
29	O-ring	336 190 224	5-pack
30	Washer	336 190 638	10-pack
31	Purge button	336 190 487	5-pack
32	Diaphragm assembly	336 190 360	Incl. #22-30

#	SERVICE KIT	PART NR.
A	Service kit for 1 apparatus Breathing valve w safety pressure	460 190 904
-	1 singular item of each of #5/6/9/10/14/16/32	
B	Service kit for 10 apparatus Breathing valve w safety pressure	460 190 905
-	10 singular item of each of #5/6/9/10/14/16/32	

# BREATHING VALVE WITHOUT SAFETY PRESSURE GREY

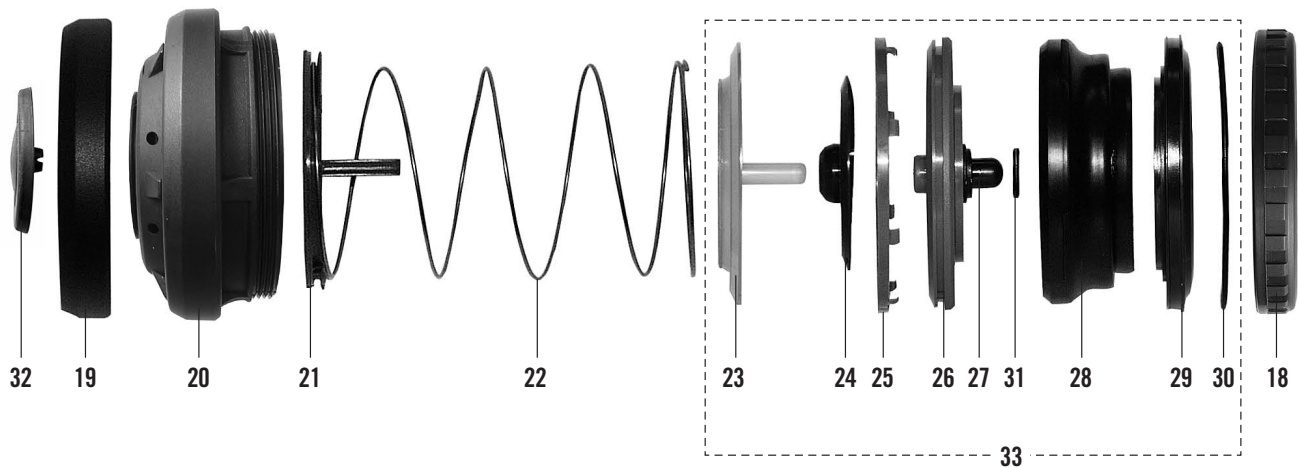


#	SPARE PART	ORDER #	NOTES
•	Breathing valve (w/o SP)	336 190 345	for face mask
•	Breathing valve (w/o SP)	336 190 347	with mouthpiece
1	Diaphragm attachment	336 190 406	
2	Valve housing MK II, grey w/o SP	336 190 408	Incl. #10-13
3	Counter pressure assy. w/o SP	460 190 588	
4	Connection nipple	460 190 396	Incl. #5, 6
5	O-ring	336 190 227	10-pack
6	O-ring	336 190 228	10-pack
7	Retaining ring	346 190 198	10-pack
8	Valve insert assy. w/o SP	460 190 558	Incl. #3-7, 14-15
9	Mouthpiece assy.	336 190 353	Incl. #17
10	Non-return valve assy.	460 190 559	
11	O-ring, only together with face mask	336 190 226	10-pack

#	SPARE PART	ORDER #	NOTES
12	Nut, grey	346 190 201	5-pack
13	Sealing plug	460 190 511	5-pack
14	Balancing diaphragm	460 190 409	5-pack
15	Valve cone assy.	336 190 064	
16	Valve insert sub assy. w/o SP	97 083-51	Incl. #3, 14-15
17	Mouth piece	460 190 505	

#	SERVICE PARTS	PART NR.	NOTES
A	Service part for 10 apparatus	336 190 226	
-	10 singular items of each of #11		

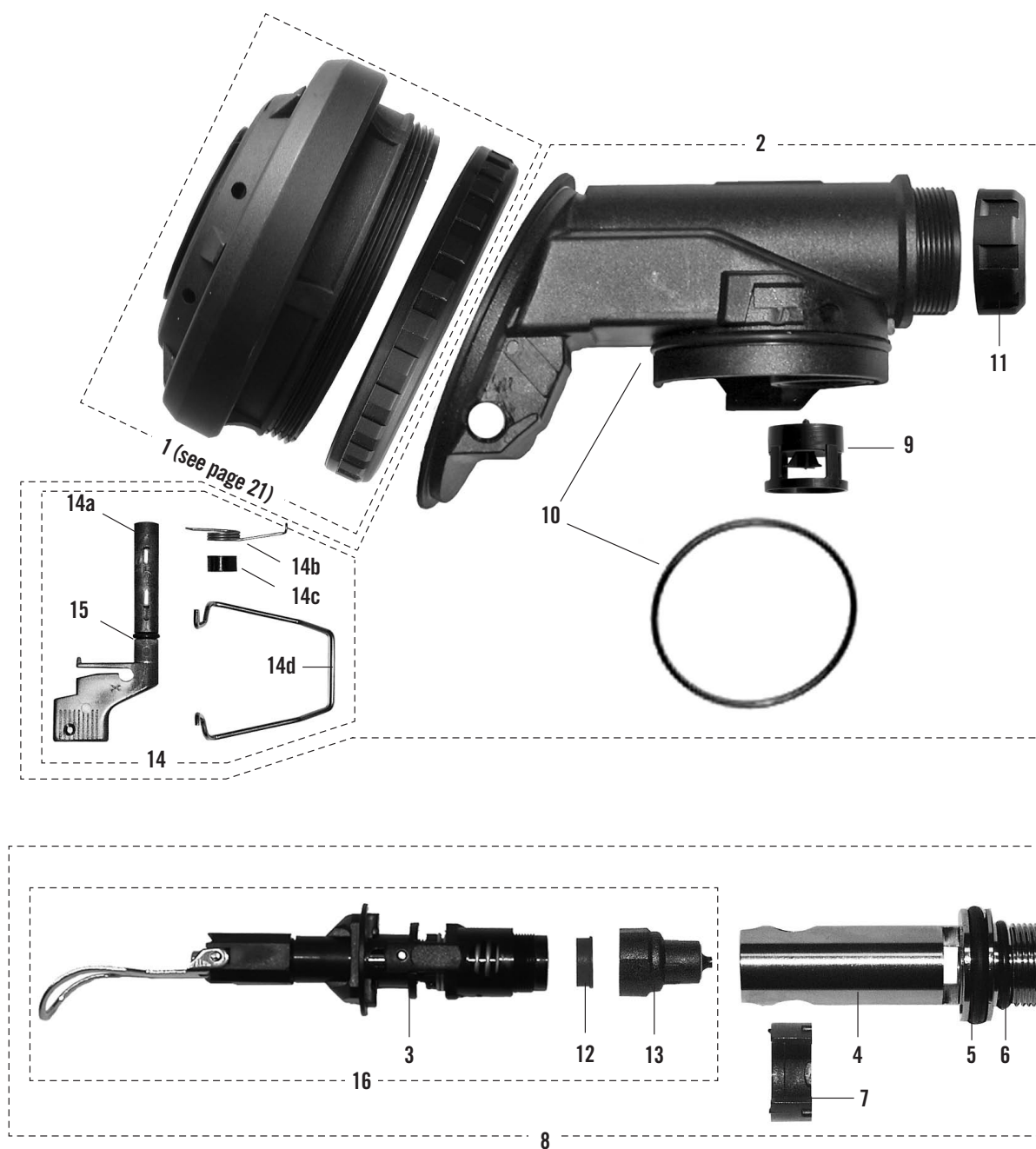
# DIAPHRAGM ATTACHMENT, W/O SP, GREY



#	SPARE PART	ORDER #	NOTES
18	Locking ring, grey	346 190 193	5-pack
19	Shield ring	460 190 410	5-pack
20	Cover with purge button, grey	96 343-51	
21	Guide disc	460 190 412	
22	Sealing spring	460 190 500	5-pack
23	Sealing disc	460 190 393	5-pack
24	Exhalation diaphragm	346 190 196	5-pack
25	Securing ring	460 190 413	10-pack
26	Diaphragm ring	460 190 394	
27	Guide pin	346 190 194	10-pack
28	Diaphragm	460 190 140	
29	Diaphragm holder	460 190 395	
30	O-ring	336 190 224	5-pack
31	Washer	336 190 638	10-pack
32	Purge button	336 190 487	5-pack
33	Diaphragm assembly	336 190 360	Incl. #23-31

#	SERVICE KIT	PART NR.
A	Service kit for 1 apparatus Breathing valve w/o safety pressure	460 190 902
-	1 singular item of each of #5/6/10/11/16/33	
B	Service kit for 10 apparatus Breathing valve w/o safety pressure	460 190 903
-	10 singular item of each of #5/6/10/11/16/33	

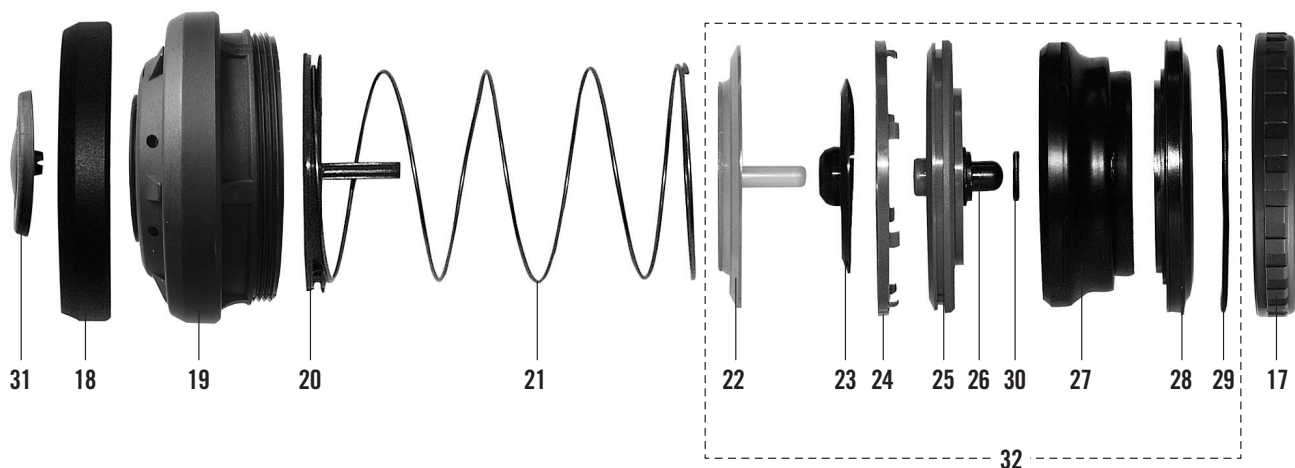
# BREATHING VALVE WITH SAFETY PRESSURE GREY



#	SPARE PART	ORDER #	NOTES
•	Breathing valve (w. SP)	336 190 354	
1	Diaphragm attachment w. SP	336 190 356	
2	Valve housing MK II, grey w. SP	336 190 379	Incl. #9-11, 14-15
3	Counter pressure assy. w. SP	460 190 589	
4	Connection nipple	460 190 396	Incl. #5, 6
5	O-ring	336 190 227	10-pack
6	O-ring	336 190 228	10-pack
7	Retaining ring	346 190 198	10-pack
8	Valve insert assy. w. SP	336 190 357	Incl. #3-7, 12-13
9	Non-return valve assy.	460 190 559	
10	O-ring, only together with face mask	336 190 226	5-pack

#	SPARE PART	ORDER #	NOTES
11	Nut	346 190 201	5-pack
12	Balancing diaphragm	460 190 409	5-pack
13	Valve cone assy.	336 190 064	
14	Lever Assy	336 190 142	Incl. #15
15	O-ring	336 190 225	10-pack
16	Valve insert sub assy. w. SP	97 028-51	Incl. #3, 12-13
#	SERVICE PARTS	PART NR.	NOTES
A	Service part for 10 apparatus	336 190 226	
-	10 singular items of each of #10		

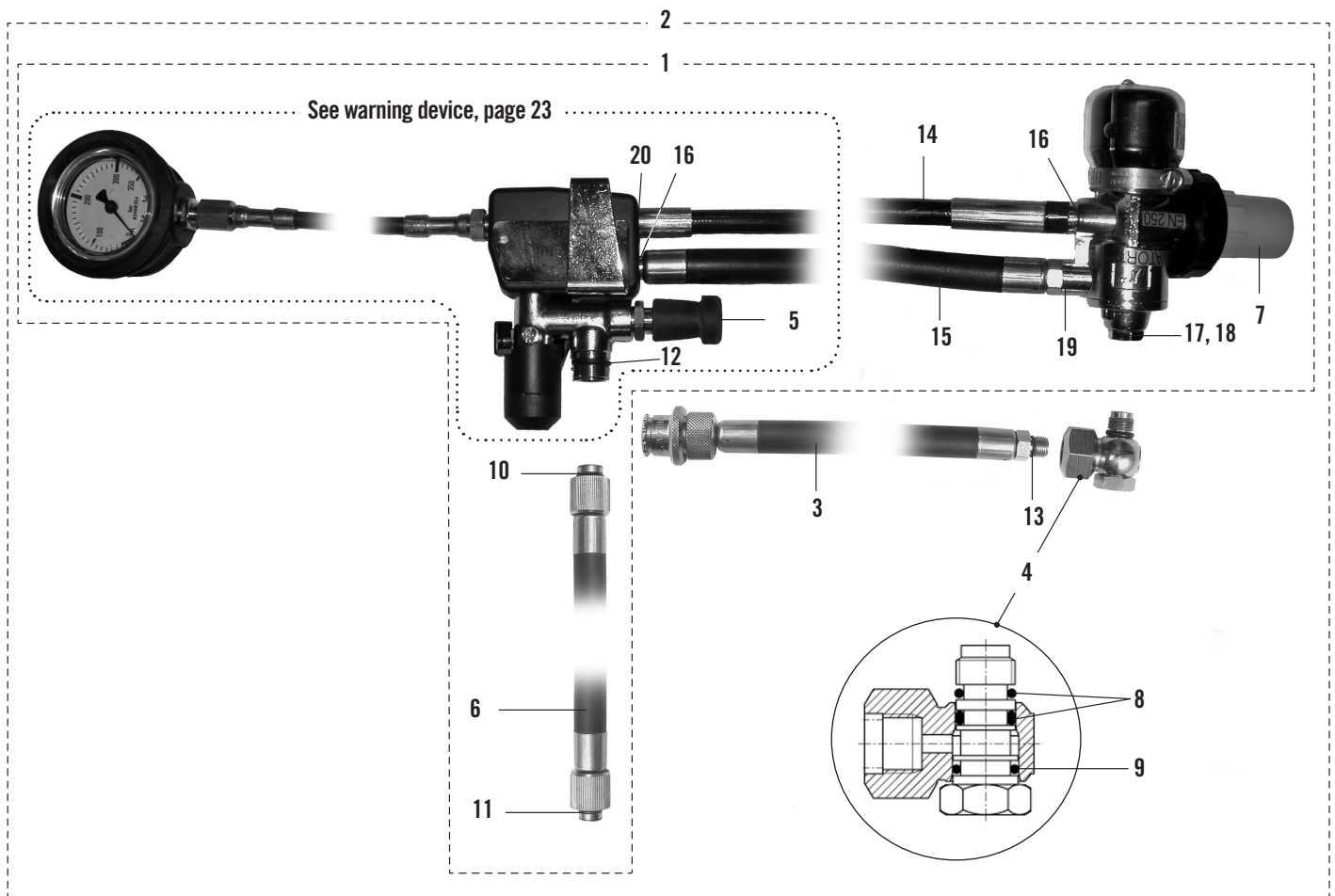
# DIAPHRAGM ATTACHMENT, W. SP, GREY



#	SPARE PART	ORDER #	NOTES
17	Locking ring, grey	346 190 193	5-pack
18	Shield ring	460 190 410	5-pack
19	Cover with purge button, grey	96 343-51	
20	Guide disc	460 190 412	
21	Sealing spring	460 190 508	5-pack
22	Sealing disc	460 190 393	5-pack
23	Exhalation diaphragm	346 190 196	5-pack
24	Securing ring	460 190 413	10-pack
25	Diaphragm ring	460 190 394	
26	Guide pin	346 190 194	10-pack
27	Diaphragm	460 190 140	
28	Diaphragm holder	460 190 395	
29	O-ring	336 190 224	5-pack
30	Washer	336 190 638	10-pack
31	Purge button	336 190 487	5-pack
32	Diaphragm assembly	336 190 360	Incl. #22-30

#	SERVICE KIT	PART NR.
A	Service kit for 1 apparatus Breathing valve w safety pressure	460 190 904
-	1 singular item of each of #5/6/9/10/14/16/32	
B	Service kit for 10 apparatus Breathing valve w safety pressure	460 190 905
-	10 singular item of each of #5/6/9/10/14/16/32	

# REGULATOR WITH WARNING

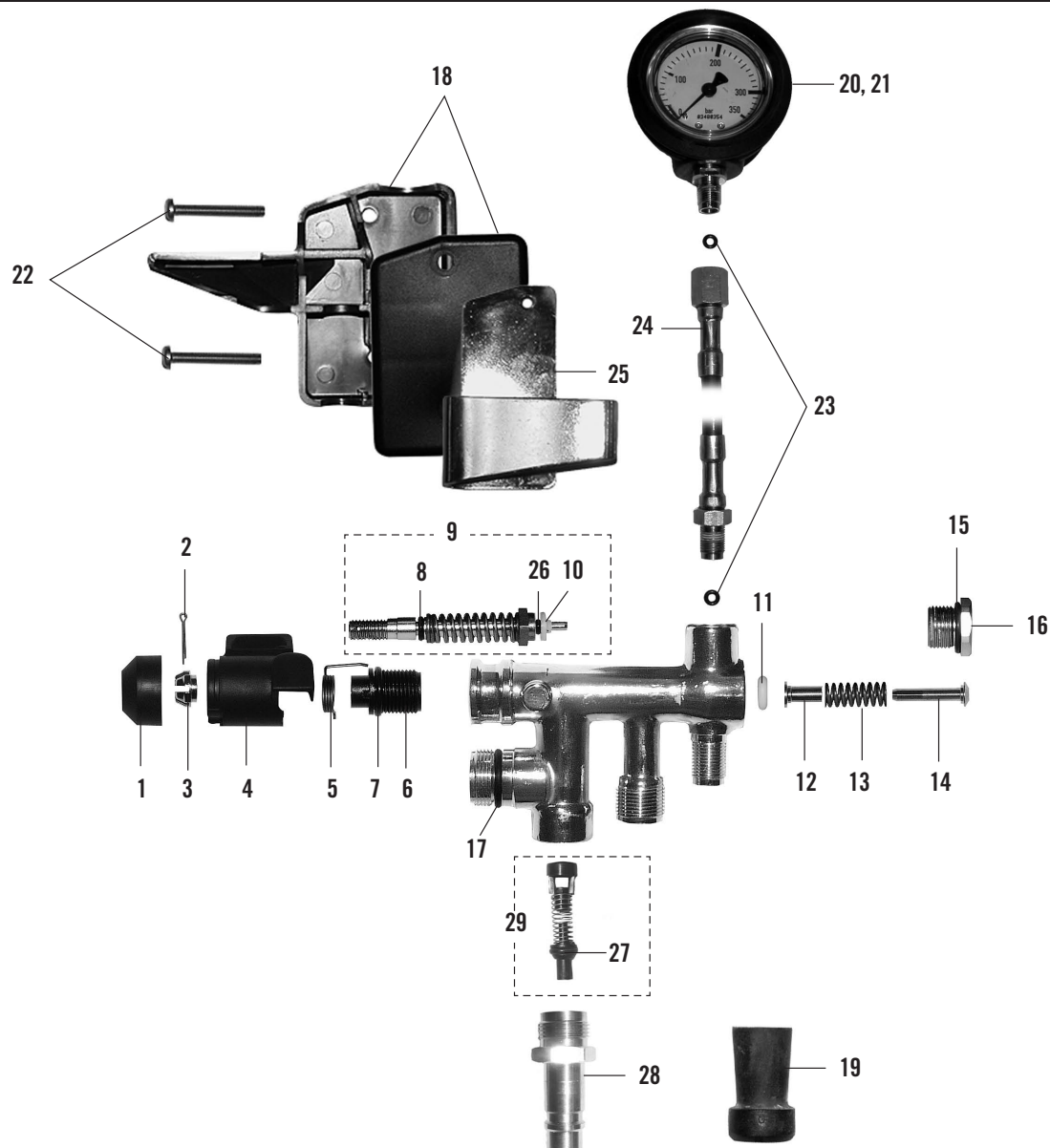


#	SPARE PART	ORDER #	NOTES
1	Regulator	336 190 377	Incl. #5-7, 10-12, 14-20
2	Regulator with Suit Infl. Hose	97 366-01	Incl. #1, 3b, 4
3a	Drysuit inflation hose, G1/8"	97 474-51	550 mm
3b	Drysuit inflation hose, G1/8"	336 190 346	750 mm
4	Swivel, G1/8"-1/8"	336 190 348	Incl. #8-9
5	Protective cap	336 190 257	3-pack
6	Breathing valve supply hose	460 190 560	
7	Protective cap, G 5/8"	460 190 557	10-pack
8	O-ring x2 for #4	336 190 312	10-pack
9	O-ring for #4	336 190 634	10-pack
10	O-ring for #6	336 190 236	10-pack
11	O-ring for #6	336 190 237	10-pack
12	O-ring	336 190 228	10-pack
13	O-ring for #3	460 190 599	10-pack
14	High pressure hose	336 190 265	
15	Low pressure hose	336 190 288	
16	O-ring for #14, 15	336 190 221	10-pack

#	SPARE PART	ORDER #	NOTES
17	Plug w. O-ring, G1/8"	460 190 418	
18	O-ring for #17	336 190 312	10-pack
19	O-ring for #15	336 190 311	10-pack
20	O-ring for #14	336 190 253	10-pack

#	SERVICE KIT	PART NR.
A	Service kit for 1 swivel Swivel, G1/8"-1/8" (#4)	460 190 906
-	1 singular item of each of #9	
-	2 singular items of each of #8	
B	Service kit for 10 swivels Swivel, G1/8"-1/8" (#4)	460 190 907
-	10 singular item of each of #9	
-	20 singular items of each of #8	

# WARNING DEVICE

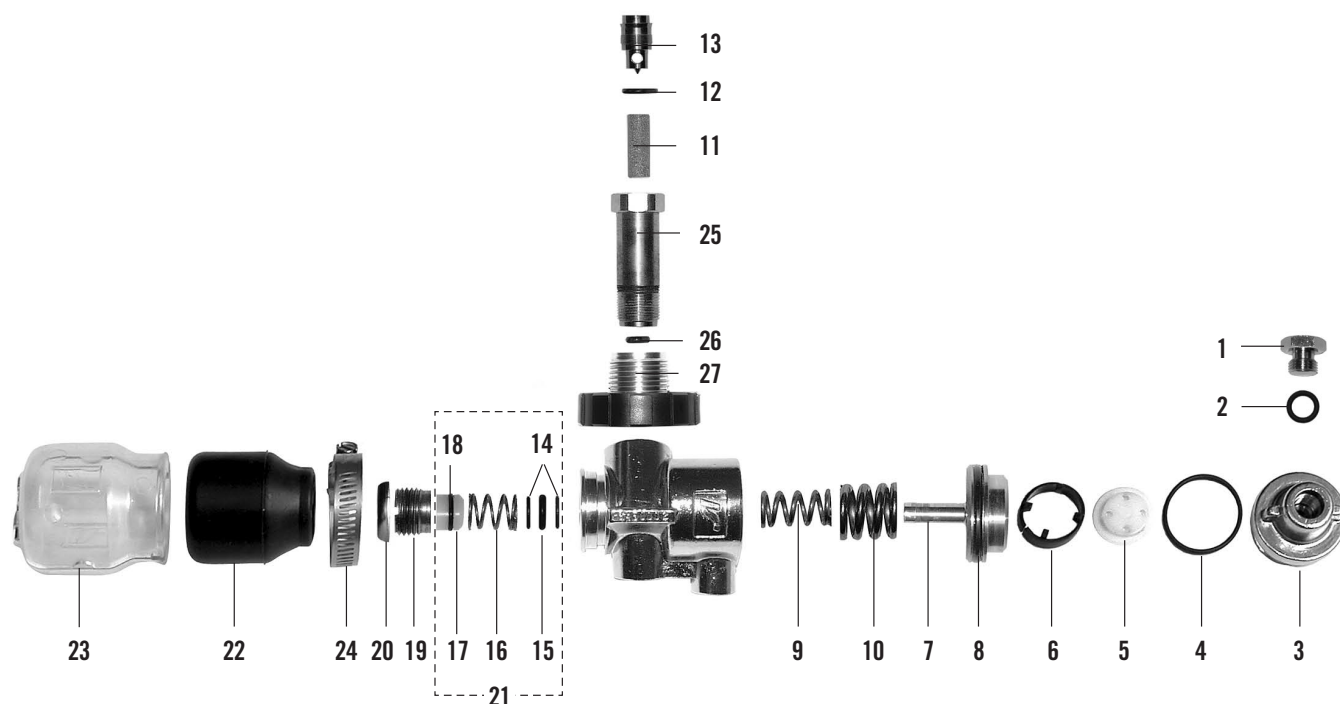


#	SPARE PART	ORDER #	NOTES
•	Warning Device, Divator MKII		Incl. #1-29
1	Cap	460 190 421	10-pack
2	Split pin	336 190 380	10-pack
3	Nut	460 190 441	5-pack
4	Handle	460 190 433	5-pack
5	Torsion spring	460 190 430	5-pack
6	Nipple	460 190 428	5-pack
7	O-ring	336 190 381	10-pack
8	O-ring	336 190 382	10-pack
9	Valve stem	460 190 429	Incl. #8, 10 & 26
10	Valve disc	336 190 383	5-pack
11	O-ring	336 190 240	5-pack
12	Guide bushing	460 190 439	5-pack
13	Spring	460 190 437	5-pack
14	Piston	460 190 431	5-pack
15	O-ring	336 190 384	10-pack
16	Plug	460 190 442	5-pack
17	O-ring	336 190 228	10-pack

#	SPARE PART	ORDER #	NOTES
18	Front and back cover	460 190 427	
19	Protective cap	336 190 257	3-pack
20	Pressure gauge Assy	460 190 381	Incl. #21
21	Rubber cover	96 548-51	
22	Screw	336 190 247	10-pack
23	O-ring for #24	336 190 235	10-pack
24	High pressure hose	460 190 527	
25	Retaining clip	460 190 503	
26	O-ring for #9	336 190 595	10-pack
27	Cone with O-ring	460 190 369	
28	Quick coupling	460 190 485	IS
29	Non-return valve	346 190 223	Incl. #27

#	SERVICE KIT	PART NR.
A	Service kit for 1 apparatus Warning device	460 190 908
-	1 singular item of each of #2/4/5/7/8/10/11/15/17/26/27	
B	Service kit for 10 apparatus Warning device	460 190 909
-	10 singular items of each of #2/4/5/7/8/10/11/15/17/26/27	

# REGULATOR

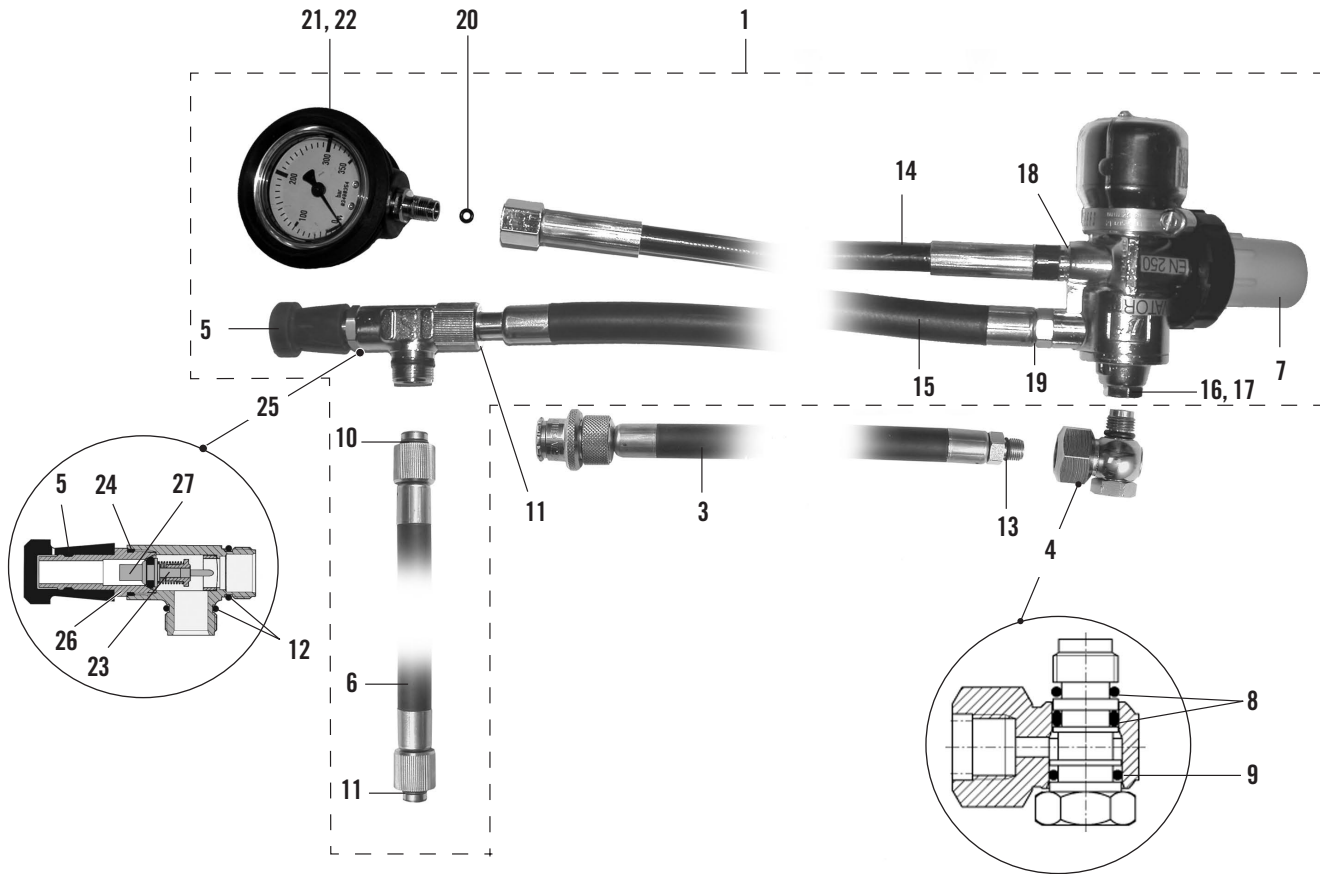


#	SPARE PART	ORDER #	NOTES
	• Pressure regulator	460 190 585	
1	Plug w. O-ring, G1/8"	460 190 418	
2	O-ring	336 190 312	10-pack
3	Cover	460 190 506	
4	O-ring	336 190 229	10-pack
5	Diffuser	460 190 564	
6	Stop ring	460 190 424	5-pack
7	Piston	460 190 420	
8	O-ring	336 190 230	10-pack
9	Regulating spring	460 190 422	5-pack
10	Spring	460 190 484	5-pack
11	a. Inlet filter	346 190 643	10-pack
	b. —  —	346 190 644	100 pack
12	a. O-ring	336 190 272	10-pack
	b. —  —	460 190 237	100-pack
13	Nipple	460 190 382	
14	Supporting washer	336 190 637	10-pack
15	O-ring	336 190 233	10-pack
16	Spring	346 190 028	5-pack
17	Seat, Regulator	460 190 591	10-pack
18	O-ring	336 190 231	10-pack

#	SPARE PART	ORDER #	NOTES
19	Adjusting screw	460 190 425	5-pack
20	Sealing plate	336 190 256	25-pack
21	Valve seat set	460 190 648	Incl. #14-18
22	Anti Freezing cap	460 190 507	5-pack
23	Anti Freezing cover	460 190 523	
24	Clamp, stainless	460 190 526	
25	Connection nipple	460 190 383	
26	O-ring	336 190 232	10-pack
27	Hand wheel connector	460 190 385	

#	SERVICE PARTS	PART NR.
A	Service part for 10 apparatus	346 190 643
—	1 singular item of each of #11	
B	Service part for 10 apparatus	336 190 272
—	1 singular item of each of #12	
C	Service kit for 100 apparatus	346 190 644
—	1 singular item of each of #11	
D	Service part for 100 apparatus	460 190 237
—	1 singular item of each of #12	
#	SERVICE KIT	PART NR.
A	Service kit for 1 apparatus Regulator	460 190 910
—	1 singular item of each of #2/4/8/11/12/15/17/18/20/22	
—	2 singular items of each of #14	
B	Service kit for 10 apparatus Regulator	460 190 911
—	10 singular items of each of #2/4/8/11/12/15/17/18/20/22	
—	20 singular items of each of #14	

# REGULATOR WITHOUT WARNING

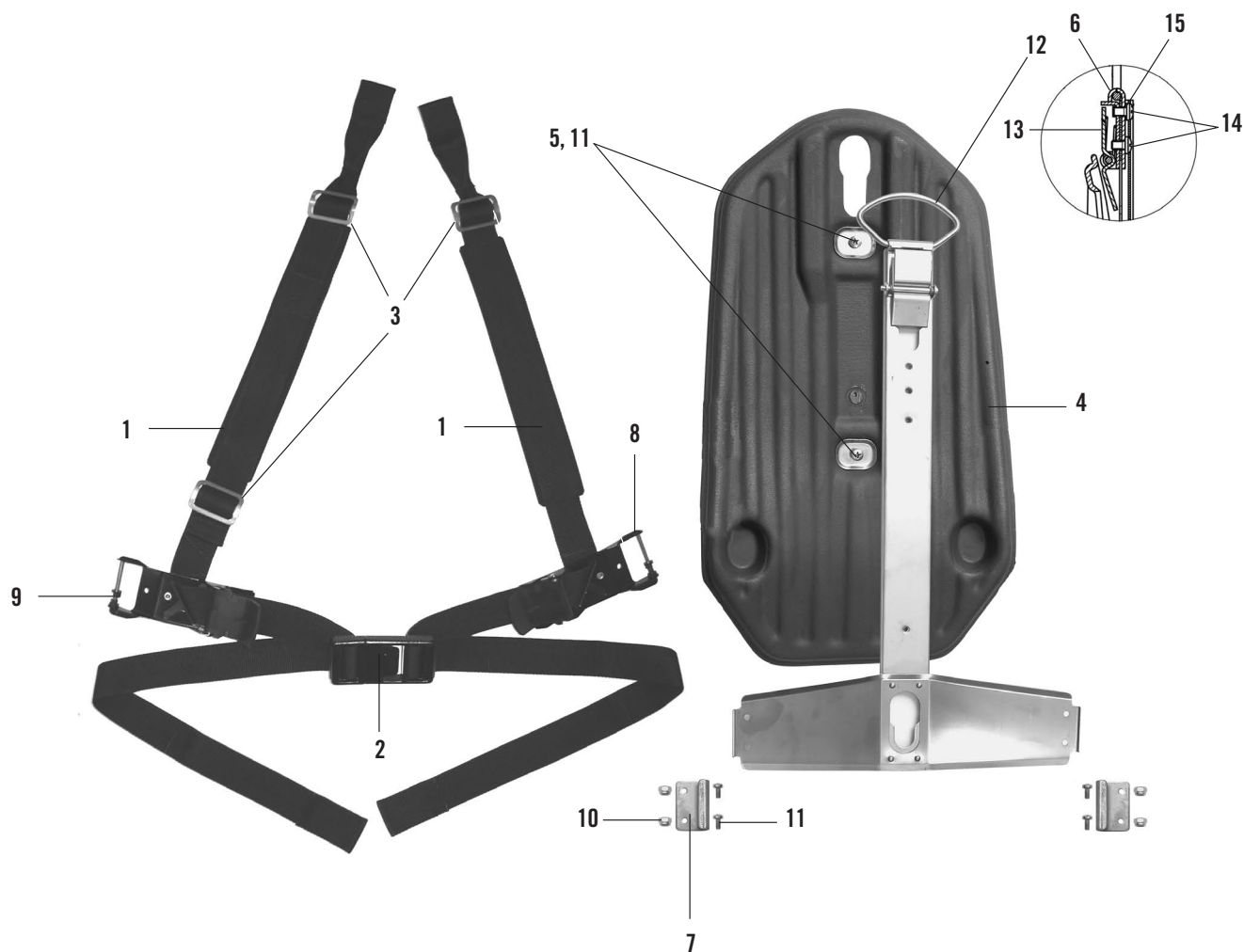


#	SPARE PART	ORDER #	NOTES
1	Regulator	336 191 075	Incl. #5-7, 10-12, 14-26
2	Regulator with Suit Infl. Hose		incl. #1, 3b, 4
3a	Drysuit inflation hose	97 474-51	550 mm
3b	Drysuit inflation hose	336 190 346	750 mm
4	Swivel LP, G1/8"-1/8"	336 190 348	
5	Protective cap	336 190 257	3-pack
6	Breathing valve supply hose	460 190 560	
7	Protective cap, G 5/8"	460 190 557	
8	O-ring x2 for #4	336 190 312	10-pack
9	O-ring for #4	336 190 634	10-pack
10	O-ring for #6	336 190 236	10-pack
11	O-ring for #6, 15	336 190 237	10-pack
12	O-ring x2 for #26	336 190 228	10-pack
13	O-ring for #3	460 190 599	10-pack
14	High pressure hose	336 190 936	
15	Low pressure hose	336 190 898	
16	Plug w. O-ring, G1/8"	460 190 418	
17	O-ring for #17	336 190 312	10-pack
18	O-ring for #14	336 190 221	10-pack
19	O-ring till #15	336 190 311	10-pack
20	Gasket set	336 190 159	

#	SPARE PART	ORDER #	NOTES
21	Pressure gauge assy	460 190 381	incl. #2
22	Rubber cover	96 548-51	
23	Non return valve kpl	346 190 223	
24	O-ring for #26	346 190 069	10-pack
25	Extra air manifold, E-10	346 190 040	Incl. #5/12 & 23/24/26
26	Quick coupling	96 531-51	
27	Cone w. O-ring	460 190 369	

#	SERVICE KIT	PART NR.
A	Service kit for 1 apparatus Swivel, G1/8"-1/8" (#4)	460 190 906
-	1 singular item of each of #9	
-	2 singular items of each of #8	
B	Service kit for 10 apparatus Swivel, G1/8"-1/8" (#4)	460 190 907
-	10 singular item of each of #9	
-	20 singular items of each of #8	
C	Service kit for 1 apparatus Extra air manifold, E-10 (#25)	460 190 912
-	1 singular item of each of #24/27	
-	2 singular items of each of #12	
D	Service kit for 10 apparatus Extra air manifold, E-10 (#25)	460 190 913
-	10 singular items of each of #24/27	
-	20 singular items of each of #12	

# HARNESS - CYLINDER PACK



#	SPARE PART	ORDER #	NOTES
•	Harness	336 190 975	
1	Shoulder straps	460 190 524	
2	Waist buckle assy	346 190 112	
3	Webbing buckle	460 190 373	2-pack
4	Backplate	460 190 590	
5	Clamping plate	460 190 302	10-pack
6	Hook	460 190 572	
7	Hook	460 190 573	
8	Buckle assy left	346 190 318	
9	Buckle assy right	346 190 319	
10	Locking nut	336 190 453	10-pack
11	Screw	460 190 574	

#	SPARE PART	ORDER #	NOTES
12	Strap separator hook	336 100 572	
13	Locking arm assy	460 190 191	
14	Screw	460 190 575	
15	Washer	336 190 261	10-pack

# HARNESS - SINGLE CYLINDER

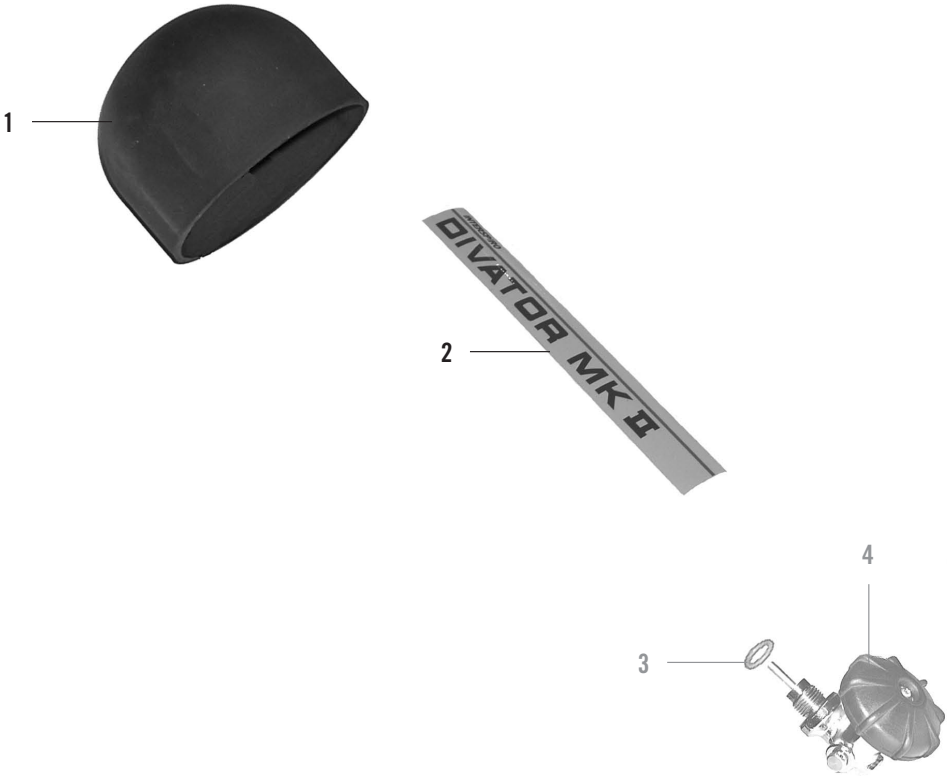


#	SPARE PART	ORDER #	NOTES
•	Harness	336 190 976	100-140mm
•	Harness	336 190 977	140-183mm
1	Shoulder straps	460 190 524	
2	Waist buckle assy	346 190 112	
3	Webbing buckle	460 190 373	2-pack
4	Backplate	460 190 590	
5	Clamping plate	460 190 302	10-pack
6	Hook	460 190 572	
7	Hook	460 190 573	
8	Buckle assy left	346 190 318	
9	Buckle assy right	346 190 319	
10	Locking nut	336 190 453	10-pack
11	Screw	460 190 574	

#	SPARE PART	ORDER #	NOTES
12	Strap separator hook	336 100 572	
13	Locking arm assy	460 190 191	
14	Screw	460 190 575	
15	Washer	336 190 261	10-pack
16a	Cylinder strap	336 190 575	100-140 mm
16b	Cylinder strap	336 190 828	140-183 mm
17	Threaded washer	460 190 576	
18a	Handle	336 190 836	100-140 mm
18b	Handle	336 190 838	140-183 mm
19	Rubber bushing	460 190 597	
•	Single cylinder mounting kit incl. (3x#14), #16a, 17, 18a	336 190 837	100-140 mm
•	Single cylinder mounting kit incl. (3x#14), #16b, 17, 18b	336 190 839	140-183 mm

# CYLINDER STEEL - SINGLE 316

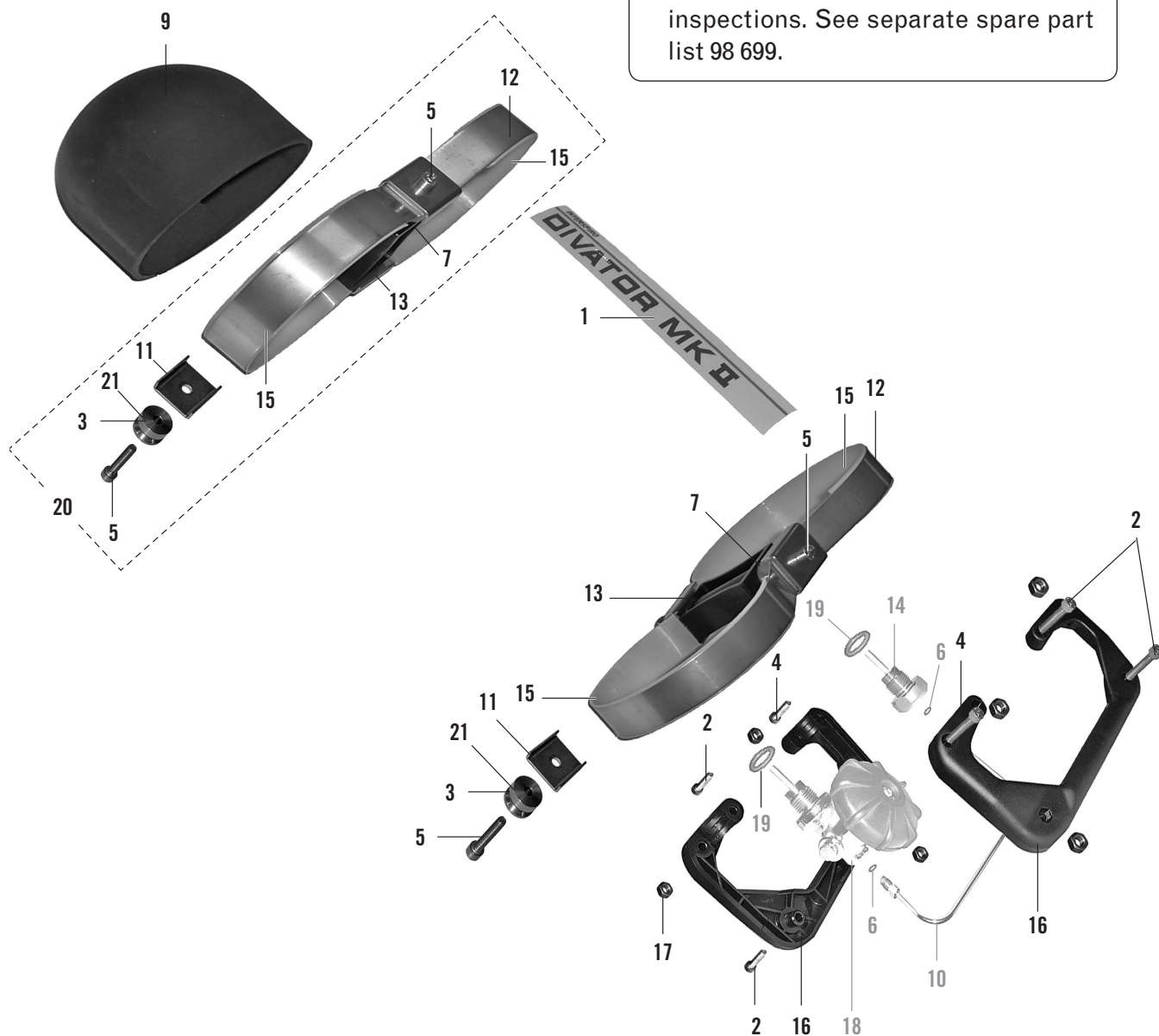
\* Spare parts intended for organizations certified to perform periodic cylinder inspections. See separate spare part list 98 699.



#	SPARE PART	ORDER #	NOTES
	• Cylinder, 6 l, DIN 90°, 300 bar	336 190 499	
1	Cylinder boot	460 190 462	
2	Label Divator MK II	336 100 467	
3	O-ring*		
4	Cylinder valve, DIN 90°*		
5	Cylinder *		

# CYLINDER STEEL - PACK 324

\* Spare parts intended for organizations certified to perform periodic cylinder inspections. See separate spare part list 98 699.

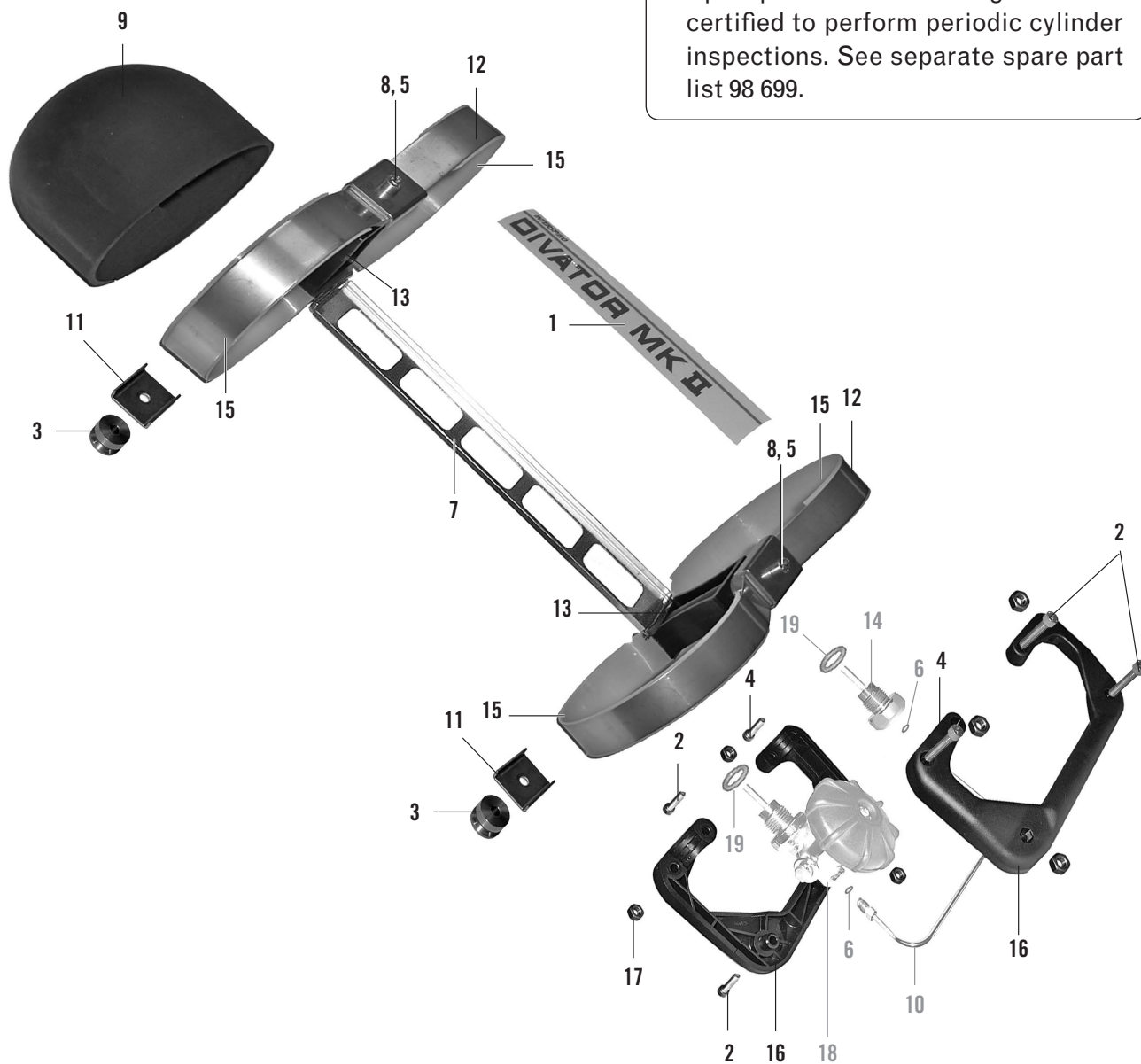


#	SPARE PART	ORDER #	NOTES
	• Cylinder pack 2x4 I	336 190 319	
1	Label Divator MK II	336 100 467	
2	Screw	336 190 241	10-pack
3	Guide washer	460 190 472	2-pack
4	Screw	336 190 243	10-pack
5	Screw	460 190 579	2-pack
6	Gasket*		
7	Spacer bushing	460 190 482	2-pack
9	Cylinder boot	460 190 460	2-pack
10	Cross over tube*		
11	Retaining plate	460 190 468	10-pack

#	SPARE PART	ORDER #	NOTES
12	Clamping strap	460 190 464	
13	Spacer	336 190 068	
14	Nipple*		
15	Protective ring	460 190 219	10-pack
16	Handle section	96 514-51	2-pack
17	Nut	336 190 244	10-pack
18	Cylinder valve*		
19	O-ring*		
20	Clamping strap assy.	336 190 146	
21	Spacing washer	460 190 470	2-pack

# CYLINDER STEEL - PACK 326

\* Spare parts intended for organizations certified to perform periodic cylinder inspections. See separate spare part list 98 699.



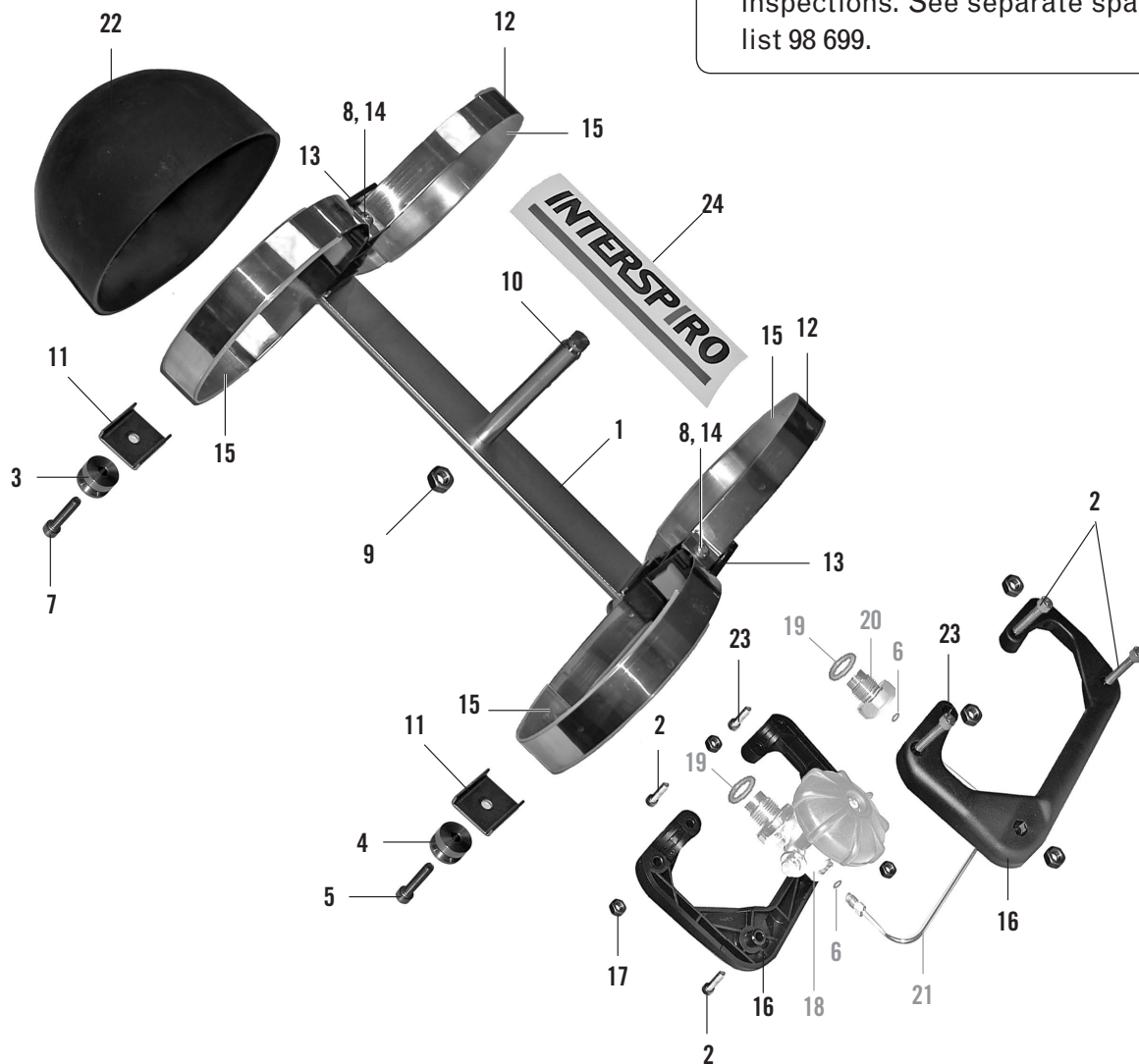
#	SPARE PART	ORDER #	NOTES
	• Cylinder pack 2x6 I	336 190 615	
1	Label Divator MK II	336 100 467	
2	Screw	336 190 241	10-pack
3	Guide washer	460 190 512	2-pack
4	Screw	336 190 243	10-pack
5	Washer	460 190 580	2-pack
6	Gasket*		
7	Spacing rod	460 190 620	
8	Screw	460 190 581	2-pack
9	Cylinder boot	96 513-51	2-pack
10	Cross over tube*		
11	Retaining plate	460 190 468	10-pack

#	SPARE PART	ORDER #	NOTES
12	Tension strap	96 500-51	2-pack
13	Spacer	331 100 475	
14	Nipple*		
15	Protective ring	460 190 219	10-pack
16	Handle section	460 190 583	2-pack
17	Nut	336 190 244	10-pack
18	Cylinder valve*		
19	O-ring*		

# CYLINDER COMPOSITE - PACK 326.7

## DIVATOR LITE

\* Spare parts intended for organizations certified to perform periodic cylinder inspections. See separate spare part list 98 699.

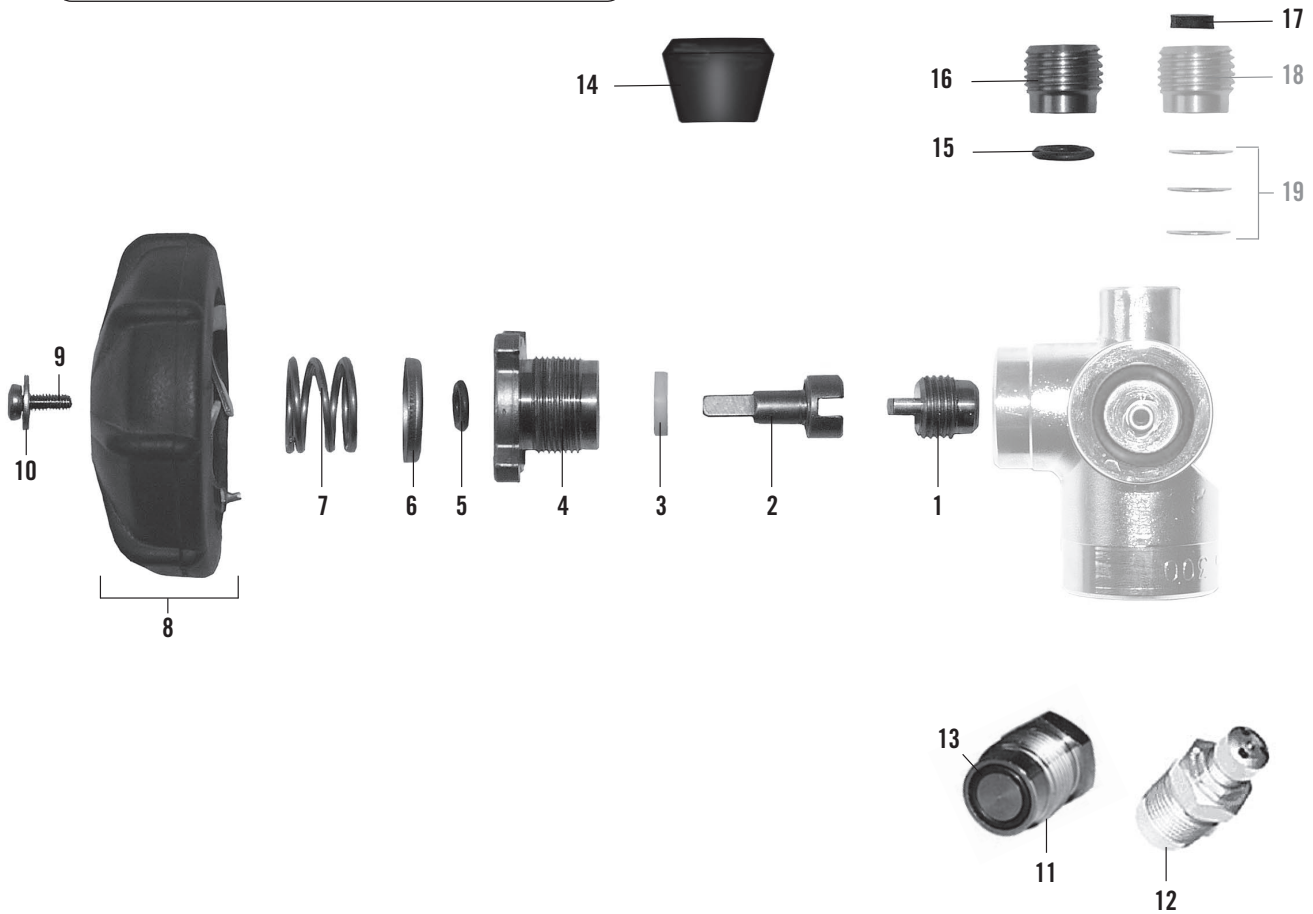


#	SPARE PART	ORDER #	NOTES
	• Cylinder pack 2x6.7 l	97 500-02	
1	Spacing rod	97 501-51	
2	Screw	336 190 241	10-pack
3	Guide washer	97 857-52	
4	Guide washer	97 857-51	
5	Screw	336 190 243	10-pack
6	Gasket*		
7	Screw	97 825-51	
8	Screw	97 506-51	
9	Nut	97 507-51	
10	Weight shaft	97 502-51	
11	Retaining plate	460 190 468	10-pack

#	SPARE PART	ORDER #	NOTES
12	Tension strap	97 513-51	
13	Spacer	460 190 474	
14	Washer	460 190 624	10-pack
15	Protective ring	460 190 219	10-pack
16	Handle section	97 337-51	2-pack
17	Nut	336 190 244	10-pack
18	Cylinder valve*		
19	O-ring*		
20	Nipple*		
21	Cross over tube*		
22	Cylinder boot	460 190 463	
23	Screw	336 190 243	10-pack
24	Interspiro label	460 190 230	10-pack

# CYLINDER VALVE, COMPOSITE

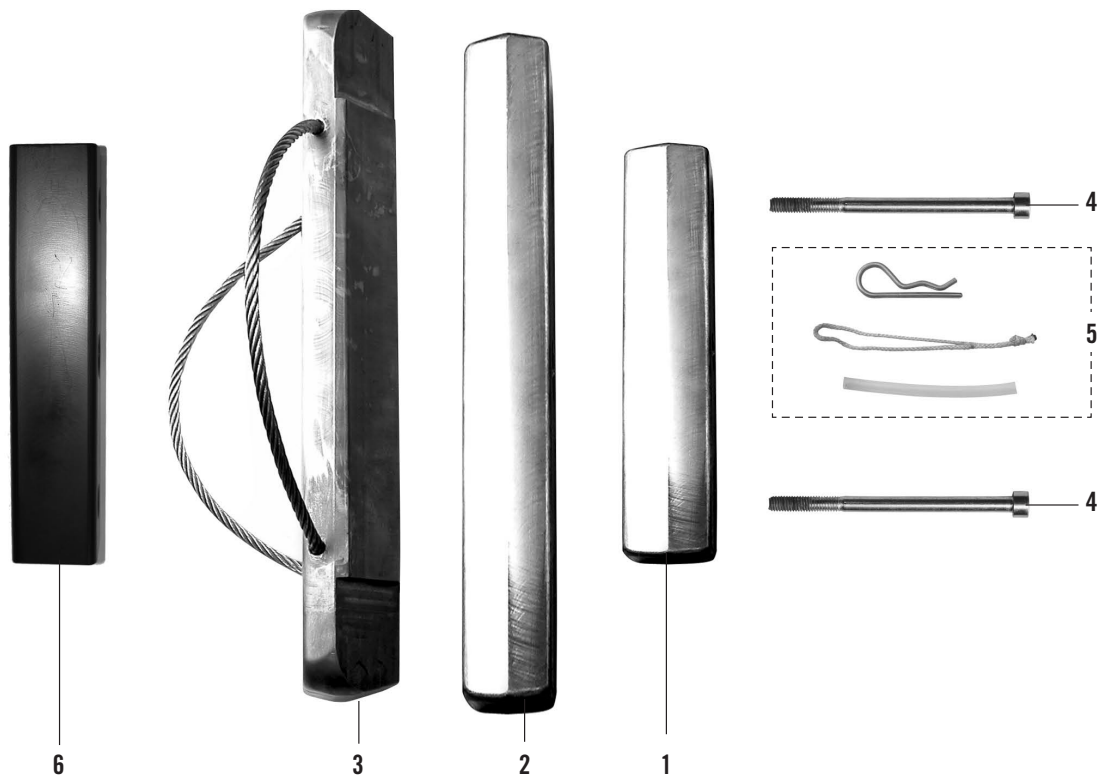
\* Spare parts intended for organizations certified to perform periodic cylinder inspections. See separate spare part list 98 699.



#	SPARE PART	ORDER #	NOTES
1	Valve slug	336 922 108	5-pack
2	Valve stem	460 190 355	
3	Gland seal	336 190 260	10-pack
4	Gland nut	460 190 356	
5	O-ring	336 190 221	10-pack
6	Washer	336 922 104	10-pack
7	Spring	336 922 105	10-pack
8	Hand wheel	460 190 243	
9	Screw	336 190 297	10-pack
10	Washer	336 190 296	10-pack
11	Plug w. O-ring	460 190 220	Incl. #13
12	Discharge plug	331 190 800	
13	O-ring	336 190 220	10-pack
14	Cylinder support	346 190 230	5-pack

#	SPARE PART	ORDER #	NOTES
15	O-ring	460 190 304	10-pack
16	Blank plug	460 190 358	
17	Burst disc rubber plug	336 190 262	10-pack
18	Safety plug, 300 bar*		
19	Burst disk kit*		
20	Valve stem set	336 190 298	Incl. #2, 9, 10
#	SERVICE KIT	PART NR.	
A	Service kit for 1 apparatus Cylinder valve	460 190 914	
–	1 singular item of each of #1/3/5		
B	Service kit for 10 apparatus Cylinder valve	460 190 915	
–	10 singular items of each of #1/3/5		

# WEIGHT, COMPOSITE



#	SPARE PART	ORDER #	NOTES
	• Weight, 13.8 kg	97 520-51	
1	Weight, lower, 2.1 kg	97 522-52	
2	Weight, lower, 3.0 kg	97 522-51	
3	Weight, upper, 7.2 kg	97 521-51	
4	Screw	97 528-51	
5	Hair Pin Assy.	460 190 570	
6	Weight substitute	97 869-51	



# INTERSPIRO

[www.interspiro.com](http://www.interspiro.com) | [info@interspiro.com](mailto:info@interspiro.com)

## NORTH & SOUTH AMERICA

**INTERSPIRO Inc.** [www.interspiro-us.com](http://www.interspiro-us.com)

10225 82nd Avenue PLEASANT PRAIRIE WI 53158-5801 USA

TEL +1 262 947 9000 FAX +1 262 947 9020 E-MAIL [info@interspiro-us.com](mailto:info@interspiro-us.com)

## CENTRAL EUROPE

### AUSTRIA

**INTERSPIRO GesmbH** [www.interspiro.de](http://www.interspiro.de)

Sternweg 20 A-8401 ZETTLING AUSTRIA

TEL +43 (0)313 557 333 FAX +43 (0)313 557 333 22 E-MAIL [info@interspiro.de](mailto:info@interspiro.de)

### GERMANY

**INTERSPIRO GmbH** [www.interspiro.de](http://www.interspiro.de)

Postfach 1220 D-76691 FORST/BADEN GERMANY

TEL +49 (0)7251 8030 FAX +49 (0)7251 2298 E-MAIL [info@interspiro.de](mailto:info@interspiro.de)

### SWITZERLAND

**INTERSPIRO AG** [www.interspiro.de](http://www.interspiro.de)

Güterstraße 47 CH-4133 PRATTELN SWITZERLAND

TEL +41 61 827 99 77 FAX +41 61 827 99 70 E-MAIL [info@interspiro.ch](mailto:info@interspiro.ch)

## THE NETHERLANDS & BELGIUM

**INTERSPIRO BV** [www.interspiro.nl](http://www.interspiro.nl)

Televisieweg 113 NL-1322 BD ALMERE NETHERLANDS

TEL +31 (0)36 5363103 FAX +31 (0)36 5384809 E-MAIL [infobv@interspiro.com](mailto:infobv@interspiro.com)

## UNITED KINGDOM & IRELAND

**INTERSPIRO Ltd.** [www.interspiro.com](http://www.interspiro.com)

7 Haworth Road Central Park TELFORD Shropshire TF2 9TU UNITED KINGDOM

TEL +44 (0)1952 200 190 FAX +44 (0)1952 299 805 E-MAIL [infouk@interspiro.com](mailto:infouk@interspiro.com)

## SCANDINAVIA, ASIA/PACIFIC & MIDDLE EAST

### SWEDEN

**NORDIC & EXPORT SALES DIVISION** [www.interspiro.com](http://www.interspiro.com)

Box 10060 S-181 10 LIDINGÖ SWEDEN

TEL +46 8 636 51 00 FAX +46 8 765 48 53 E-MAIL [info@interspiro.com](mailto:info@interspiro.com)

### MALAYSIA

**NORDIC & EXPORT SALES DIVISION** [www.interspiro.com](http://www.interspiro.com)

305 & 305A Lorong Perak Taman Melawati 53100 KUALA LUMPUR MALAYSIA

TEL +60 3 4105 8122 FAX +60 3 4105 3122 E-MAIL [interspiro.asiapacific@interspiro.com](mailto:interspiro.asiapacific@interspiro.com)